

manipulator

FACTORYTALK VIEW APPLICATION DOCUMENTATION

May 10, 2010

TABLE OF CONTENTS

1	MANIPULATOR	2
1.1	MANIPULATOR	3
1.1.1	SYSTEMS	4
1.1.1.1	Systems\Project Settings	4
1.1.1.2	Systems\Runtime Security	4
1.1.1.3	Systems\Diagnostics List Setup	4
1.1.1.4	Systems\GlobalConnections	4
1.1.1.5	Systems\Startup	5
1.1.2	TAG DATABASE	6
1.1.2.1	Tags\Tag List	6
1.1.2.2	Tags\Tags Cross Reference	6
1.1.3	GRAPHICS	8
1.1.3.1	Graphics\Displays	8
1.1.3.1.1	Graphics\Displays\control	8
1.1.3.1.2	Graphics\Displays\setting	12
1.1.4	DIRECT TAGS	14
1.1.4.1	Direct Tags\Direct Tags Cross Reference	14
1.2	RSLINX ENTERPRISE	16

manipulator

FACTORYTALK VIEW APPLICATION DOCUMENTATION

May 10, 2010

1 MANIPULATOR

<u>Name</u>	<u>Description</u>
manipulator	

1.1 MANIPULATOR

<u>Properties</u>	<u>Value</u>
Name	manipulator
Description	
Project file	C:\Documents and Settings\All Users\Documents\RSView Enterprise\ME\HMI Projects\manipulator
Number of displays	5
Licensed maximum	Unlimited

1.1.1 SYSTEMS

1.1.1.1 Systems\Project Settings

1.1.1.1.1 General

Option	Selection
Project window size	640*480
Width	640
Height	480
Compact Machine Edition application	NO

1.1.1.1.2 Runtime

Option	Selection	Content
Title Bar	NO	
Border	YES	
Control Box	NO	
Minimize button	NO	
Project window position: Top	0	
Project window position: Left	0	
Enable auto logout	NO	
Inactivity period (minutes)	0	
Return to graphic on logout	NO	
Parameter file for graphic	NO	
Parameter list for graphic	NO	

1.1.1.1.3 Tags used by Component

Tag Name	Tag Type	Tag Description
----------	----------	-----------------

1.1.1.2 Systems\Runtime Security

1.1.1.2.1 ME Runtime 4.0 and later

AccountID	Login Macro	Logout Macro	A	B	C	D	E	F	G	H	I	J	K	L	M	N	O	P
DEFAULT			Y	Y	Y	Y	Y	Y	Y	Y	Y	Y	Y	Y	Y	Y	Y	Y

1.1.1.2.2 ME Runtime 3.20 and earlier

AccountID	Login Macro	Logout Macro	A	B	C	D	E	F	G	H	I	J	K	L	M	N	O	P
DEFAULT			Y	Y	Y	Y	Y	Y	Y	Y	Y	Y	Y	Y	Y	Y	Y	Y

1.1.1.3 Systems\Diagnostics List Setup

1.1.1.3.1 Log Messages to printer when

Option	Selection
Error occur	NO
Warning occur	NO
Information occur	NO
Audit occur	NO

1.1.1.3.2 Runtime display

Option	Selection
Display name	[DIAGNOSTICS]
Error occur	YES
Warning occur	YES
Information occur	NO
Audit occur	NO
Maximum number of messages	200

1.1.1.4 Systems\GlobalConnections

1.1.1.4.1 General

Option	Selection
Date and time output interval(seconds)	60
Maximum update rate	1000 millisecond

1.1.1.4.2 Connection

<u>Connection</u>	<u>Tag or Expression</u>
Replace Display Number	
Display Print Active	
Year	
Day of Week	
Month	
Day of Month	
Hour	
Minute	
Second	
Remote Display Number	
Remote Display Print	
Remote Date and Time	
Remote Year	
Remote Month	
Remote Day of Month	
Remote Hour	
Remote Minute	
Remote Second	
Remote Backlight Intensity	
Remote Macro1	
Remote Macro2	
Remote Macro3	
Remote Macro4	
Remote Macro5	
MERuntime RAM Usage	
Total RAM Usage	
Available RAM	
Remote RAM Usage	
Close an On Top Display	
Close All On Top Displays	
Parameter File	
Use Parameter List	
Parameter Tag #1:	
Parameter Tag #2:	
Parameter Tag #3:	
Parameter Tag #4:	
Parameter Tag #5:	
Parameter Tag #6:	
Parameter Tag #7:	
Parameter Tag #8:	
Parameter Tag #9:	
Parameter Tag #10:	

1.1.1.4.3 Tags used by Component

<u>Tag Name</u>	<u>Tag Type</u>	<u>Tag Description</u>
-----------------	-----------------	------------------------

1.1.1.5 Systems\Startup

1.1.1.5.1 Start when project is run

<u>Option</u>	<u>Selection</u>	<u>Content</u>
Alarms	YES	
Information messages	YES	
Data logging	NO	
Startup macro	NO	
Shutdown macro	NO	
Initial graphic	YES	control
Parameter file for the initial graphic	YES	

1.1.1.5.2 Tags used by Component

<u>Tag Name</u>	<u>Tag Type</u>	<u>Tag Description</u>
-----------------	-----------------	------------------------

1.1.2 TAG DATABASE

1.1.2.1 Tags\Tag List

1.1.2.1.1 Summary

Option	Total number
Tags	18
Device tags	0
Device analog tags	0
Device digital tags	0
Device string tags	0
Memory tags	1
Memory analog tags	0
Memory digital tags	1
Memory string tags	0

1.1.2.1.2 Analog Tag List

Tag Name	Tag Type	Tag Description	Minimum	Maximum	Data Source	Initial Value	Retentive	Address	Scale	Offset	Data Type
system\ DateAndTimeInteger	Analog Tags	System date and time integer	0,00	2147395600,00	System Tag	--	--	--	1,00	0,00	Long Integer
system\DayOfMonth	Analog Tags	Day of Month	1,00	31,00	System Tag	--	--	--	1,00	0,00	Unsigned Integer
system\DayOfWeek	Analog Tags	Day of Week (Sunday = 1)	1,00	7,00	System Tag	--	--	--	1,00	0,00	Unsigned Integer
system\DayOfYear	Analog Tags	Day of Year	1,00	366,00	System Tag	--	--	--	1,00	0,00	Unsigned Integer
system\Hour	Analog Tags	Hour of day (0 - 23)	0,00	23,00	System Tag	--	--	--	1,00	0,00	Unsigned Integer
system\Minute	Analog Tags	Minutes (0 - 59)	0,00	59,00	System Tag	--	--	--	1,00	0,00	Unsigned Integer
system\Month	Analog Tags	Month	1,00	12,00	System Tag	--	--	--	1,00	0,00	Unsigned Integer
system\Second	Analog Tags	Seconds (0 - 59)	0,00	59,00	System Tag	--	--	--	1,00	0,00	Unsigned Integer
system\Year	Analog Tags	Year	0,00	32000,00	System Tag	--	--	--	1,00	0,00	Unsigned Integer

1.1.2.1.3 Digital Tag List

Tag Name	Tag Type	Tag Description	Data Source	Initial Value	Retentive	Address
pos_hist	Digital Tags		Memory Tag	NO	NO	--
system\BlinkFast	Digital Tags	Changes every 100 ms	System Tag	--	--	--
system\BlinkSlow	Digital Tags	Changes every 500 ms	System Tag	--	--	--

1.1.2.1.4 String Tag List

Tag Name	Tag Type	Tag Description	Length	Data Source	Initial Value	Retentive	Address
system\AlarmResetDateAndTimeString	String Tags	Date and time string of last Alarm Status reset	48	System Tag	--	--	--
system\Date	String Tags	System date string	48	System Tag	--	--	--
system\DateAndTimeString	String Tags	System date and time string	48	System Tag	--	--	--
system\MonthString	String Tags	Month as string	48	System Tag	--	--	--
system\Time	String Tags	System time string	48	System Tag	--	--	--
system\User	String Tags	Currently logged on User	82	System Tag	--	--	--

1.1.2.2 Tags\Tags Cross Reference

1.1.2.2.1 Tag Cross Reference

Tag Name	Tag Type	Tag Description	Component Type	Component Name	Object Name
pos_hist	Digital Tags	Displays	control		BarGraph1
.	.	Displays	control		GotoDisplayButton1
.	.	Displays	control		Line1
.	.	Displays	control		MaintainedPushButton1
.	.	Displays	control		MomentaryPushButton10
.	.	Displays	control		MomentaryPushButton11
.	.	Displays	control		MomentaryPushButton19
.	.	Displays	control		MomentaryPushButton2
.	.	Displays	control		MomentaryPushButton20
.	.	Displays	control		MomentaryPushButton21
.	.	Displays	control		MomentaryPushButton22
.	.	Displays	control		MomentaryPushButton23
.	.	Displays	control		MomentaryPushButton24
.	.	Displays	control		MomentaryPushButton3
.	.	Displays	control		MomentaryPushButton4
.	.	Displays	control		MomentaryPushButton5
.	.	Displays	control		MomentaryPushButton6
.	.	Displays	control		MomentaryPushButton7
.	.	Displays	control		MomentaryPushButton8
.	.	Displays	control		MomentaryPushButton9
.	.	Displays	control		MultistateIndicator1
.	.	Displays	control		MultistateIndicator13
.	.	Displays	control		MultistateIndicator14
.	.	Displays	control		MultistateIndicator15
.	.	Displays	control		MultistateIndicator16
.	.	Displays	control		MultistateIndicator2
.	.	Displays	control		MultistateIndicator3
.	.	Displays	control		MultistateIndicator4
.	.	Displays	control		MultistateIndicator5

Tag Name	Tag Type	Tag Description	Component Type	Component Name	Object Name
.	.	.	Displays	control	NumericDisplay1
.	.	.	Displays	control	NumericDisplay10
.	.	.	Displays	control	NumericDisplay2
.	.	.	Displays	control	NumericDisplay5
.	.	.	Displays	control	NumericDisplay8
.	.	.	Displays	control	NumericDisplay9
.	.	.	Displays	control	Panel1
.	.	.	Displays	control	Panel2
.	.	.	Displays	control	Panel3
.	.	.	Displays	control	Panel4
.	.	.	Displays	control	Text13
.	.	.	Displays	control	Text14
.	.	.	Displays	control	Text15
.	.	.	Displays	control	Text2
.	.	.	Displays	control	Text3
.	.	.	Displays	control	Text4
.	.	.	Displays	control	Text5
.	.	.	Displays	control	Text6
.	.	.	Displays	control	Text7
.	.	.	Displays	control	Text8
.	.	.	Displays	control	TrendObject2
.	.	.	Displays	control	TrendObject3
.	.	.	Displays	setting	Panel1
.	.	.	Displays	setting	Panel2
.	.	.	Displays	setting	Panel3
.	.	.	Displays	setting	ReturntoDisplayButton1
.	.	.	Displays	setting	Text10
.	.	.	Displays	setting	Text2
.	.	.	Displays	setting	Text3
.	.	.	Displays	setting	Text4
.	.	.	Displays	setting	Text8
.	.	.	Displays	setting	Text9

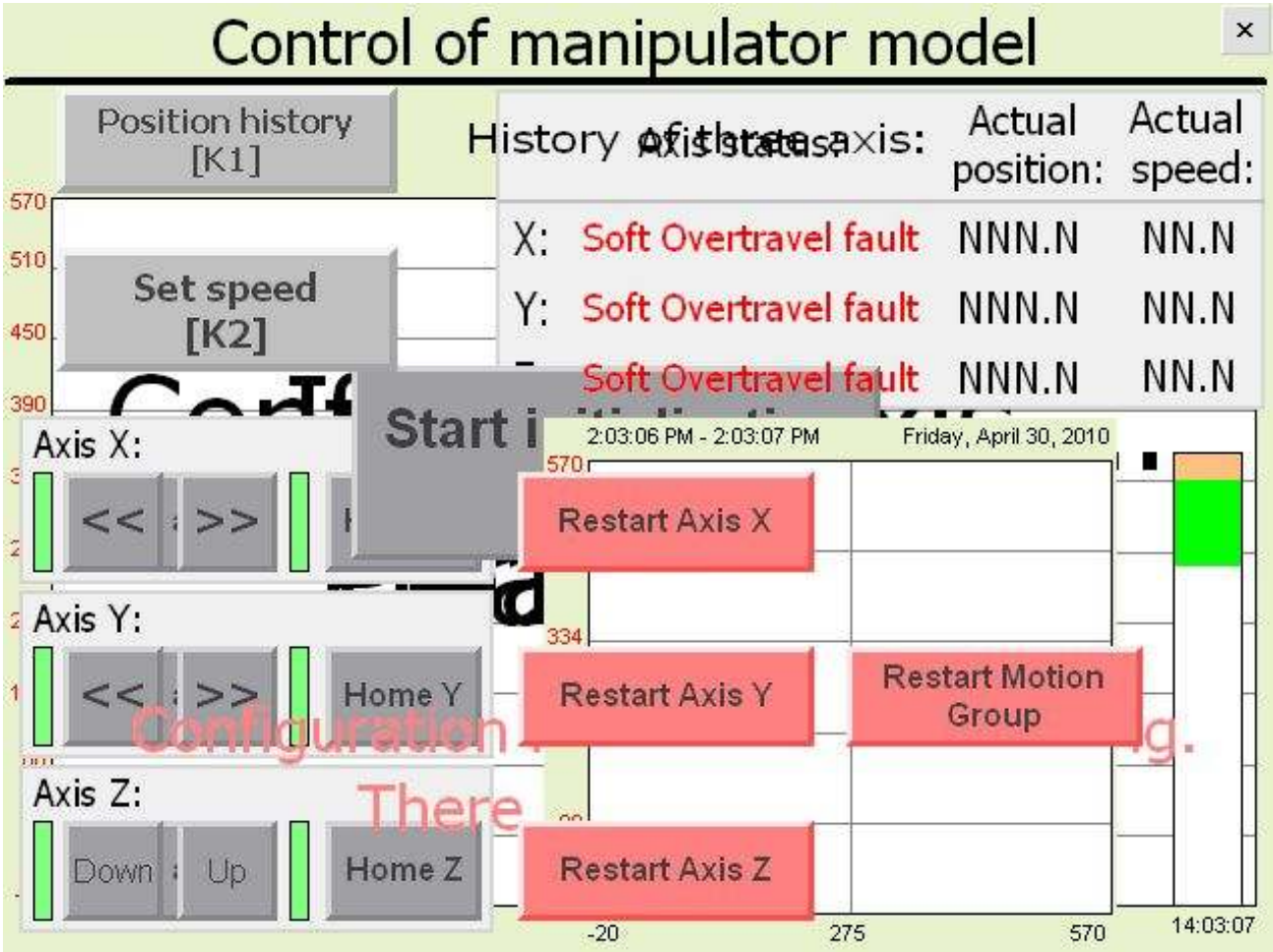
1.1.2.2.2 Unused Tag Info

Tag Name	Tag Type	Tag Description
system\AlarmResetDateAndTimeString	String Tags	Date and time string of last Alarm Status reset
system\BlinkFast	Digital Tags	Changes every 100 ms
system\BlinkSlow	Digital Tags	Changes every 500 ms
system\Date	String Tags	System date string
system\DateAndTimeInteger	Analog Tags	System date and time integer
system\DateAndTimeString	String Tags	System date and time string
system\DayOfMonth	Analog Tags	Day of Month
system\DayOfWeek	Analog Tags	Day of Week (Sunday = 1)
system\DayOfYear	Analog Tags	Day of Year
system\Hour	Analog Tags	Hour of day (0 - 23)
system\Minute	Analog Tags	Minutes (0 - 59)
system\Month	Analog Tags	Month
system\MonthString	String Tags	Month as string
system\Second	Analog Tags	Seconds (0 - 59)
system\Time	String Tags	System time string
system\User	String Tags	Currently logged on User
system\Year	Analog Tags	Year

1.1.3 GRAPHICS

1.1.3.1 Graphics\Displays

1.1.3.1.1 Graphics\Displays\control



1.1.3.1.1.1 Graphics|control|Display Settings|General

Option	Selection
Display Type	On Top
Security Code	*
Title Bar	NO
Disable Initial Input Focus	NO
Maximum Tag Update Rate	1.00 seconds
Size	Specify Size in Pixels
Specify Size Width	634
Specify Size Height	474
Position X	0
Position Y	0
Background Color	0xCDF1E9

1.1.3.1.1.2 Graphics|control|Display Settings|Behavior

Option	Selection
Startup Command	
Shutdown Command	
Disable Highlight When Object has Focus	NO
Highlight Color of Objects with Input Focus	0x8080FF

1.1.3.1.1.3 ActiveX controls

File Name	Control	File Version
METXView.ocx	Trend Object	5.10.00

1.1.3.1.1.4 Animated Display Objects

Object Name	Grouping	X	Y	Property	Expression
GotoDisplayButton1	27	122	.	Goto Display Button: Visibility Control	{(pos_hist)=0} AND ({[New2]initial}=0) AND ({[New2]x_fault}=0)
.	.	.	.	Goto Display Button :Key Assignment	K2
MomentaryPushButton8	421	321	.	Momentary Push Button: Connections: Value	{[New2]group_reset}
.	.	.	.	Momentary Push Button: Visibility Control	{(pos_hist)=0} AND ({[New2]initial}=0) AND ((([New2]x_fault) <> 0) OR ({[New2]y_fault} <> 0) OR ({[New2]z_fault} <> 0))
MomentaryPushButton7	257	408	.	Momentary Push Button: Connections: Value	{[New2]z_man_reset}
.	.	.	.	Momentary Push Button: Visibility Control	{(pos_hist)=0} AND ({[New2]initial}=0) AND ({[New2]z_fault} <> 0)
MomentaryPushButton6	257	321	.	Momentary Push Button: Connections: Value	{[New2]y_man_reset}
.	.	.	.	Momentary Push Button: Visibility Control	{(pos_hist)=0} AND ({[New2]initial}=0) AND ({[New2]y_fault} <> 0)
MomentaryPushButton2	257	234	.	Momentary Push Button: Connections: Value	{[New2]x_man_reset}
.	.	.	.	Momentary Push Button: Visibility Control	{(pos_hist)=0} AND ({[New2]initial}=0) AND ({[New2]x_fault} <> 0)
TrendObject3	270	207	.	Trend Object: Connections: Pen 1	{[New2]x_position}
.	.	.	.	Trend Object: Connections: Pen 2	{[New2]y_position}
.	.	.	.	Trend Object: Visibility Control	{[New2]initial}=1
Text12	64	342	.	Text: Visibility Control	{[New2]initial}=1 AND ({[New2]initial_pom}=0) AND ({[New2]OsaX.DriveStatus} == 0) AND ({[New2]OsaY.DriveStatus} == 0) AND ({[New2]OsaZ.DriveStatus} == 0) AND ({[New2]initial_acum} > 10)
NumericDisplay4	282	417	.	Numeric Display: Connections: Value	{[New2]initial_acum}
.	.	.	.	Numeric Display: Visibility Control	{[New2]initial}=1 AND ({[New2]initial_pom}=0) AND ({[New2]OsaX.DriveStatus} == 0) AND ({[New2]OsaY.DriveStatus} == 0) AND ({[New2]OsaZ.DriveStatus} == 0)
MomentaryPushButton23	87	408	.	Momentary Push Button: Connections: Value	{[New2]z_man_up}
.	.	.	.	Momentary Push Button: Visibility Control	{(pos_hist)=0} AND ({[New2]initial}=0) AND ({[New2]z_fault}=0)
MomentaryPushButton22	30	408	.	Momentary Push Button: Connections: Value	{[New2]z_man_down}
.	.	.	.	Momentary Push Button: Visibility Control	{(pos_hist)=0} AND ({[New2]initial}=0) AND ({[New2]z_fault}=0)
MomentaryPushButton11	30	408	.	Momentary Push Button: Connections: Value	{[New2]z_SOT_Ok_To_Override}
.	.	.	.	Momentary Push Button: Visibility Control	{(pos_hist)=0} AND ({[New2]initial}=0) AND (([New2]z_SOT_NegMemory)==1) OR ({[New2]z_SOT_PosMemory}=1)
MomentaryPushButton20	87	321	.	Momentary Push Button: Connections: Value	{[New2]y_man_left}
.	.	.	.	Momentary Push Button: Visibility Control	{(pos_hist)=0} AND ({[New2]initial}=0) AND ({[New2]y_fault}=0)
MomentaryPushButton19	30	321	.	Momentary Push Button: Connections: Value	{[New2]y_man_right}
.	.	.	.	Momentary Push Button: Visibility Control	{(pos_hist)=0} AND ({[New2]initial}=0) AND ({[New2]y_fault}=0)
MomentaryPushButton10	30	321	.	Momentary Push Button: Connections: Value	{[New2]y_SOT_Ok_To_Override}
.	.	.	.	Momentary Push Button: Visibility Control	{(pos_hist)=0} AND ({[New2]initial}=0) AND (([New2]y_SOT_NegMemory)=1) OR ({[New2]y_SOT_PosMemory}=1)
MomentaryPushButton4	87	234	.	Momentary Push Button: Connections: Value	{[New2]x_man_right}
.	.	.	.	Momentary Push Button: Visibility Control	{(pos_hist)=0} AND ({[New2]initial}=0) AND ({[New2]x_fault}=0)
MomentaryPushButton3	30	234	.	Momentary Push Button: Connections: Value	{[New2]x_man_left}
.	.	.	.	Momentary Push Button: Visibility Control	{(pos_hist)=0} AND ({[New2]initial}=0) AND ({[New2]x_fault}=0)
MomentaryPushButton9	30	234	.	Momentary Push Button: Connections: Value	{[New2]x_SOT_Ok_To_Override}
.	.	.	.	Momentary Push Button: Visibility Control	{(pos_hist)=0} AND ({[New2]initial}=0) AND (([New2]x_SOT_NegMemory)=1) OR ({[New2]x_SOT_PosMemory}=1)
Line1	246	97	.	Line: Visibility Control	{(pos_hist)=0} AND ({[New2]initial}=0)
MultistateIndicator5	280	172	.	Multistate Indicator: Connections: Indicator	{[New2]z_fault}
.	.	.	.	Multistate Indicator: Visibility Control	{(pos_hist)=0} AND ({[New2]initial}=0)
MultistateIndicator3	280	137	.	Multistate Indicator: Connections: Indicator	{[New2]y_fault}
.	.	.	.	Multistate Indicator: Visibility Control	{(pos_hist)=0} AND ({[New2]initial}=0)
NumericDisplay10	561	173	.	Numeric Display: Connections: Value	{[New2]z_speed}
.	.	.	.	Numeric Display: Visibility Control	{(pos_hist)=0} AND ({[New2]initial}=0)
NumericDisplay9	561	139	.	Numeric Display: Connections: Value	{[New2]y_speed}
.	.	.	.	Numeric Display: Visibility Control	{(pos_hist)=0} AND ({[New2]initial}=0)
NumericDisplay8	474	173	.	Numeric Display: Connections: Value	{[New2]z_position}
.	.	.	.	Numeric Display: Visibility Control	{(pos_hist)=0} AND ({[New2]initial}=0)
NumericDisplay5	474	138	.	Numeric Display: Connections: Value	{[New2]y_position}
.	.	.	.	Numeric Display: Visibility Control	{(pos_hist)=0} AND ({[New2]initial}=0)
MomentaryPushButton1	174	181	.	Momentary Push Button: Connections: Value	{[New2]initial_start}
.	.	.	.	Momentary Push Button: Visibility Control	{[New2]initial}=1 AND ({[New2]initial_pom}=0) AND ({[New2]OsaX.DriveStatus} <> 0) AND ({[New2]OsaY.DriveStatus} <> 0) AND ({[New2]OsaZ.DriveStatus} <> 0)
Text7	231	55	.	Text: Visibility Control	{(pos_hist)=1} AND ({[New2]initial}=0)
Text15	255	173	.	Text: Visibility Control	{(pos_hist)=0} AND ({[New2]initial}=0)
Text14	255	138	.	Text: Visibility Control	{(pos_hist)=0} AND ({[New2]initial}=0)
Text13	255	103	.	Text: Visibility Control	{(pos_hist)=0} AND ({[New2]initial}=0)
MultistateIndicator4	280	102	.	Multistate Indicator: Connections: Indicator	{[New2]x_fault}
.	.	.	.	Multistate Indicator: Visibility Control	{(pos_hist)=0} AND ({[New2]initial}=0)
Text3	317	57	.	Text: Visibility Control	{(pos_hist)=0} AND ({[New2]initial}=0)
MaintainedPushButton1	27	42	.	Maintained Push Button: Connections: Value	{pos_hist}
.	.	.	.	Maintained Push Button: Visibility Control	{[New2]initial}=0
Text6	15	382	.	Text: Visibility Control	{(pos_hist)=0} AND ({[New2]initial}=0)
MomentaryPushButton24	161	408	.	Momentary Push Button: Connections: Value	{[New2]z_man_gohome}
.	.	.	.	Momentary Push Button: Visibility Control	{(pos_hist)=0} AND ({[New2]initial}=0) AND ({[New2]z_fault}=0)
MultistateIndicator16	143	408	.	Multistate Indicator: Connections: Indicator	If {[New2]OsaZ.NegHardOvertravelFault} == 1 Then 2 Else If {[New2]OsaZ.NegSoftOvertravelFault} == 1 Then 1 Else 0
.	.	.	.	Multistate Indicator: Visibility Control	{(pos_hist)=0} AND ({[New2]initial}=0)
MultistateIndicator15	15	408	.	Multistate Indicator: Connections: Indicator	If {[New2]OsaZ.PosHardOvertravelFault} == 1 Then 2 Else If {[New2]OsaZ.PosSoftOvertravelFault} == 1 Then 1 Else 0
.	.	.	.	Multistate Indicator: Visibility Control	{(pos_hist)=0} AND ({[New2]initial}=0)
Panel3	8	380	.	Panel: Visibility Control	{(pos_hist)=0} AND ({[New2]initial}=0)
Text5	15	295	.	Text: Visibility Control	{(pos_hist)=0} AND ({[New2]initial}=0)
MomentaryPushButton21	161	321	.	Momentary Push Button: Connections: Value	{[New2]y_man_gohome}
.	.	.	.	Momentary Push Button: Visibility Control	{(pos_hist)=0} AND ({[New2]initial}=0) AND ({[New2]y_fault}=0)
MultistateIndicator14	143	321	.	Multistate Indicator: Connections: Indicator	If {[New2]OsaY.PosHardOvertravelFault} == 1 Then 2 Else If {[New2]OsaY.PosSoftOvertravelFault} == 1 Then 1 Else 0
.	.	.	.	Multistate Indicator: Visibility Control	{(pos_hist)=0} AND ({[New2]initial}=0)

Object Name	Grouping	X	Y	Property	Expression
MultistateIndicator13		15	321	Multistate Indicator: Connections: Indicator	If {[New2]OsaY.NegHardOvertravelFault} == 1 Then 2 Else If {[New2]OsaY.NegSoftOvertravelFault} == 1 Then 1 Else 0
.	.	.	.	Multistate Indicator: Visibility Control	(({pos_hist}=0) AND ({[New2]initial}=0)
Panel2	8	293		Panel: Visibility Control	(({pos_hist}=0) AND ({[New2]initial}=0)
Text4	15	208		Text: Visibility Control	(({pos_hist}=0) AND ({[New2]initial}=0)
ShutdownButton1	608	1		Shutdown Button :Key Assignment	K7
NumericDisplay2	561	104		Numeric Display: Connections: Value	{[New2]x_speed}
.	.	.	.	Numeric Display: Visibility Control	(({pos_hist}=0) AND ({[New2]initial}=0)
Text8	562	44		Text: Visibility Control	(({pos_hist}=0) AND ({[New2]initial}=0)
MomentaryPushButton5	161	234		Momentary Push Button: Connections: Value	{[New2]x_man_gohome}
				Momentary Push Button: Visibility Control	(({pos_hist}=0) AND ({[New2]initial}=0) AND ({[New2]x_fault}=0)
MultistateIndicator2	143	234		Multistate Indicator: Connections: Indicator	If {[New2]OsaX.NegHardOvertravelFault} == 1 Then 2 Else If {[New2]OsaX.NegSoftOvertravelFault} == 1 Then 1 Else 0
.	.	.	.	Multistate Indicator: Visibility Control	(({pos_hist}=0) AND ({[New2]initial}=0)
MultistateIndicator1	15	234		Multistate Indicator: Connections: Indicator	If {[New2]OsaX.PosHardOvertravelFault} == 1 Then 2 Else If {[New2]OsaX.PosSoftOvertravelFault} == 1 Then 1 Else 0
.	.	.	.	Multistate Indicator: Visibility Control	(({pos_hist}=0) AND ({[New2]initial}=0)
Text2	474	46		Text: Visibility Control	(({pos_hist}=0) AND ({[New2]initial}=0)
BarGraph1	584	224		Bar Graph: Connections: Value	{[New2]z_position}
.	.	.	.	Bar Graph: Visibility Control	(({pos_hist}=0) AND ({[New2]initial}=0)
NumericDisplay1	474	103		Numeric Display: Connections: Value	{[New2]x_position}
.	.	.	.	Numeric Display: Visibility Control	(({pos_hist}=0) AND ({[New2]initial}=0)
Panel1	8	206		Panel: Visibility Control	(({pos_hist}=0) AND ({[New2]initial}=0)
Panel4	246	43		Panel: Visibility Control	(({pos_hist}=0) AND ({[New2]initial}=0)
Text11	51	169		Text: Visibility Control	(({[New2]initial}==1) AND ({[New2]initial_pom}=0) AND ({[New2]OsaX.DriveStatus} == 0) AND ({[New2]OsaY.DriveStatus} == 0) AND ({[New2]OsaZ.DriveStatus} == 0)
Text10	140	169		Text: Visibility Control	(({[New2]initial}=1) AND ({[New2]initial_pom}=1)
TrendObject2	2	76		Trend Object: Connections: Pen 1	{[New2]x_position}
.	.	.	.	Trend Object: Connections: Pen 2	{[New2]y_position}
.	.	.	.	Trend Object: Connections: Pen 3	{[New2]z_position}
.	.	.	.	Trend Object: Visibility Control	(({pos_hist}=1) AND ({[New2]initial}=0)

1.1.3.1.1.5 Object Properties

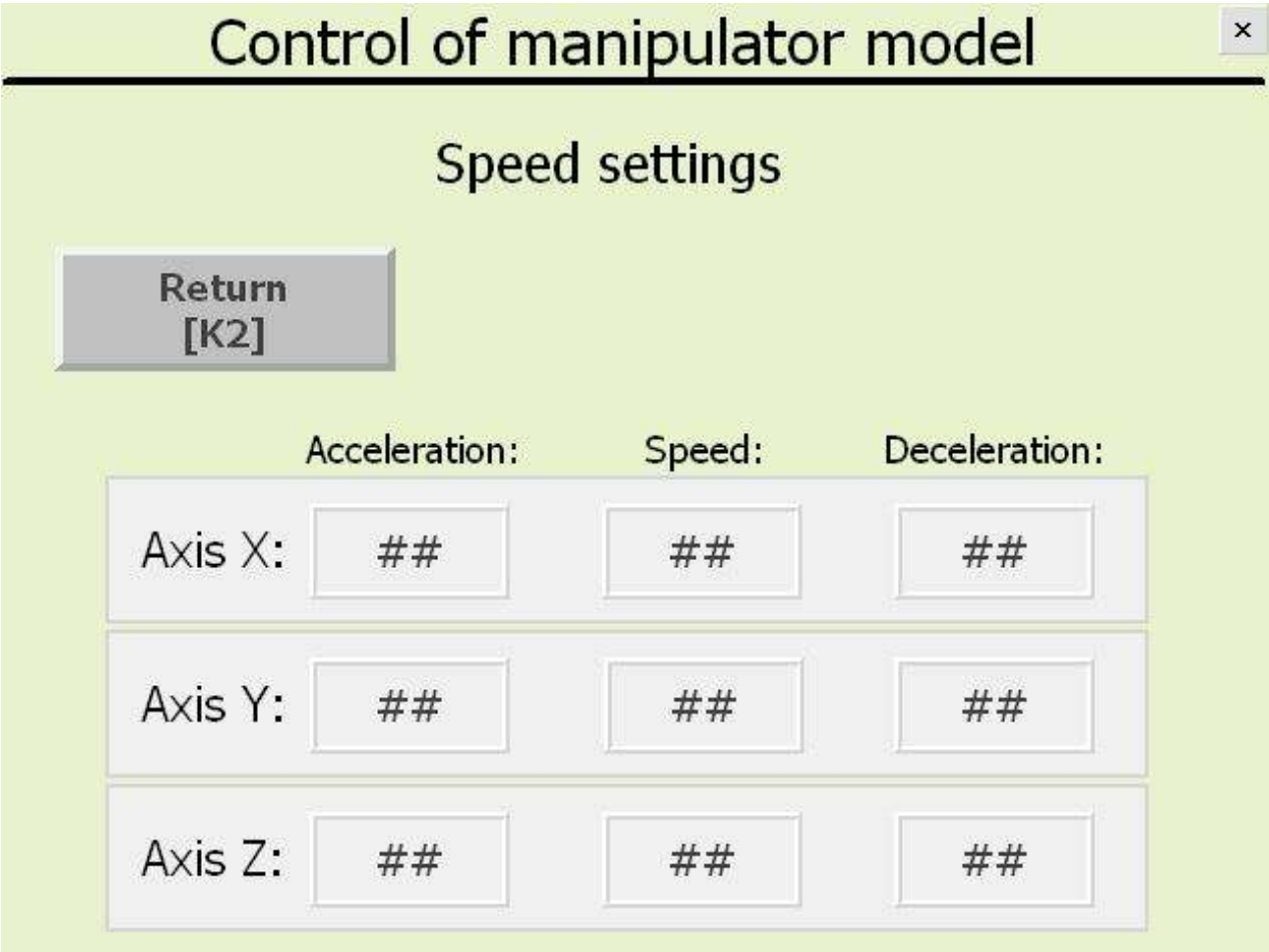
Object Name	Grouping	X	Y
Line5	0	37	
Text1	104	-1	

1.1.3.1.1.6 Tags used by Component

Tag Name	Tag Type	Tag Description
[New2]group_reset		
[New2]initial		
[New2]initial_acum		
[New2]initial_pom		
[New2]initial_start		
[New2]OsaX.DriveStatus		
[New2]OsaX.NegHardOvertravelFault		
[New2]OsaX.NegSoftOvertravelFault		
[New2]OsaX.PosHardOvertravelFault		
[New2]OsaX.PosSoftOvertravelFault		
[New2]OsaY.DriveStatus		
[New2]OsaY.NegHardOvertravelFault		
[New2]OsaY.NegSoftOvertravelFault		
[New2]OsaY.PosHardOvertravelFault		
[New2]OsaY.PosSoftOvertravelFault		
[New2]OsaZ.DriveStatus		
[New2]OsaZ.NegHardOvertravelFault		
[New2]OsaZ.NegSoftOvertravelFault		
[New2]OsaZ.PosHardOvertravelFault		
[New2]OsaZ.PosSoftOvertravelFault		
[New2]x_fault		
[New2]x_man_gohome		
[New2]x_man_left		
[New2]x_man_reset		
[New2]x_man_right		
[New2]x_position		
[New2]x_SOT_NegMemory		
[New2]x_SOT_Ok_To_Override		
[New2]x_SOT_PosMemory		
[New2]x_speed		
[New2]y_fault		
[New2]y_man_gohome		
[New2]y_man_left		
[New2]y_man_reset		
[New2]y_man_right		
[New2]y_position		
[New2]y_SOT_NegMemory		
[New2]y_SOT_Ok_To_Override		
[New2]y_SOT_PosMemory		
[New2]y_speed		
[New2]z_fault		
[New2]z_man_down		
[New2]z_man_gohome		

<u>Tag Name</u>	<u>Tag Type</u>	<u>Tag Description</u>
[New2]z_man_reset		
[New2]z_man_up		
[New2]z_position		
[New2]z_SOT_NegMemory		
[New2]z_SOT_Ok_To_Override		
[New2]z_SOT_PosMemory		
[New2]z_speed		
pos_hist	Digital Tags	

1.1.3.1.2 Graphics\Displays\setting



1.1.3.1.2.1 Graphics|setting|Display Settings|General

Option	Selection
Display Type	On Top
Security Code	*
Title Bar	NO
Disable Initial Input Focus	NO
Maximum Tag Update Rate	1,00 seconds
Size	Specify Size in Pixels
Specify Size Width	634
Specify Size Height	474
Position X	0
Position Y	0
Background Color	0xCDF1E9

1.1.3.1.2.2 Graphics|setting|Display Settings|Behavior

Option	Selection
Startup Command	
Shutdown Command	
Disable Highlight When Object has Focus	NO
Highlight Color of Objects with Input Focus	0x8080FF

1.1.3.1.2.3 Animated Display Objects

Object Name	Grouping	X	Y	Property	Expression
NumericInputEnable10	.	446	404	Numeric Input Enable : Label : Caption	/*N:2 {[New2]z_man_deccel} NOFILL DP:0*/
.	.	.	.	Numeric Input Enable: Connections: Value	{[New2]z_man_deccel}
NumericInputEnable9	.	446	327	Numeric Input Enable : Label : Caption	/*N:2 {[New2]y_man_deccel} NOFILL DP:0*/
.	.	.	.	Numeric Input Enable: Connections: Value	{[New2]y_man_deccel}
NumericInputEnable8	.	446	250	Numeric Input Enable : Label : Caption	/*N:2 {[New2]x_man_deccel} NOFILL DP:0*/
.	.	.	.	Numeric Input Enable: Connections: Value	{[New2]x_man_deccel}
NumericInputEnable7	.	300	404	Numeric Input Enable : Label : Caption	/*N:2 {[New2]y_man_speed} NOFILL DP:0*/
.	.	.	.	Numeric Input Enable: Connections: Value	{[New2]y_man_speed}
NumericInputEnable6	.	301	327	Numeric Input Enable : Label : Caption	/*N:2 {[New2]y_man_speed} NOFILL DP:0*/
.	.	.	.	Numeric Input Enable: Connections: Value	{[New2]y_man_speed}
NumericInputEnable4	.	300	250	Numeric Input Enable : Label : Caption	/*N:2 {[New2]x_man_speed} NOFILL DP:0*/
.	.	.	.	Numeric Input Enable: Connections: Value	{[New2]x_man_speed}
NumericInputEnable3	.	154	404	Numeric Input Enable : Label : Caption	/*N:2 {[New2]z_man_accel} NOFILL DP:0*/

Object Name	Grouping	X	Y	Property	Expression
.	.	.	.	Numeric Input Enable: Connections: Value	{{New2}z_man_accel}
NumericInputEnable2	154	327	.	Numeric Input Enable : Label : Caption	/*N:2 {{New2}y_man_accel} NOFILL DP:0*/
.	.	.	.	Numeric Input Enable: Connections: Value	{{New2}y_man_accel}
Text3	70	335	.	Text: Visibility Control	{{pos_hist}=0} AND ({{New2}initial}=0)
Text2	70	412	.	Text: Visibility Control	{{pos_hist}=0} AND ({{New2}initial}=0)
NumericInputEnable1	154	250	.	Numeric Input Enable : Label : Caption	/*N:2 {{New2}x_man_accel} NOFILL DP:0*/
.	.	.	.	Numeric Input Enable: Connections: Value	{{New2}x_man_accel}
Text10	322	211	.	Text: Visibility Control	{{pos_hist}=0} AND ({{New2}initial}=0)
Text9	441	211	.	Text: Visibility Control	{{pos_hist}=0} AND ({{New2}initial}=0)
Text8	152	211	.	Text: Visibility Control	{{pos_hist}=0} AND ({{New2}initial}=0)
ReturntoDisplayButton1	27	122	.	Return to Display Button: Visibility Control	{{pos_hist}=0} AND ({{New2}initial}=0)
.	.	.	.	Return to Display Button :Key Assignment	K2
Panel3	52	390	.	Panel: Visibility Control	{{pos_hist}=0} AND ({{New2}initial}=0)
Panel2	52	313	.	Panel: Visibility Control	{{pos_hist}=0} AND ({{New2}initial}=0)
Text4	70	258	.	Text: Visibility Control	{{pos_hist}=0} AND ({{New2}initial}=0)
ShutdownButton1	608	1	.	Shutdown Button :Key Assignment	K7
Panel1	52	236	.	Panel: Visibility Control	{{pos_hist}=0} AND ({{New2}initial}=0)

1.1.3.1.2.4 Object Properties

Object Name	Grouping	X	Y
Text7	217	63	.
Line5	0	37	.
Text1	104	-1	.

1.1.3.1.2.5 Tags used by Component

Tag Name	Tag Type	Tag Description
[New2]initial	Digital Tags	
[New2]x_man_accel		
[New2]x_man_deccel		
[New2]x_man_speed		
[New2]y_man_accel		
[New2]y_man_deccel		
[New2]y_man_speed		
[New2]z_man_accel		
[New2]z_man_deccel		
pos_hist		

1.1.4 DIRECT TAGS

1.1.4.1 Direct Tags\Direct Tags Cross Reference

Shortcut Name	Tag Name	Component Type	Component Name	Object Name
New2	group_reset	Displays	control	MomentaryPushButton8
New2	initial	Displays	control	BarGraph1
New2	initial	Displays	control	GotoDisplayButton1
New2	initial	Displays	control	Line1
New2	initial	Displays	control	MaintainedPushButton1
New2	initial	Displays	control	MomentaryPushButton1
New2	initial	Displays	control	MomentaryPushButton10
New2	initial	Displays	control	MomentaryPushButton11
New2	initial	Displays	control	MomentaryPushButton19
New2	initial	Displays	control	MomentaryPushButton2
New2	initial	Displays	control	MomentaryPushButton20
New2	initial	Displays	control	MomentaryPushButton21
New2	initial	Displays	control	MomentaryPushButton22
New2	initial	Displays	control	MomentaryPushButton23
New2	initial	Displays	control	MomentaryPushButton24
New2	initial	Displays	control	MomentaryPushButton3
New2	initial	Displays	control	MomentaryPushButton4
New2	initial	Displays	control	MomentaryPushButton5
New2	initial	Displays	control	MomentaryPushButton6
New2	initial	Displays	control	MomentaryPushButton7
New2	initial	Displays	control	MomentaryPushButton8
New2	initial	Displays	control	MomentaryPushButton9
New2	initial	Displays	control	MultistateIndicator1
New2	initial	Displays	control	MultistateIndicator13
New2	initial	Displays	control	MultistateIndicator14
New2	initial	Displays	control	MultistateIndicator15
New2	initial	Displays	control	MultistateIndicator16
New2	initial	Displays	control	MultistateIndicator2
New2	initial	Displays	control	MultistateIndicator3
New2	initial	Displays	control	MultistateIndicator4
New2	initial	Displays	control	MultistateIndicator5
New2	initial	Displays	control	NumericDisplay1
New2	initial	Displays	control	NumericDisplay10
New2	initial	Displays	control	NumericDisplay2
New2	initial	Displays	control	NumericDisplay4
New2	initial	Displays	control	NumericDisplay5
New2	initial	Displays	control	NumericDisplay8
New2	initial	Displays	control	NumericDisplay9
New2	initial	Displays	control	Panel1
New2	initial	Displays	control	Panel2
New2	initial	Displays	control	Panel3
New2	initial	Displays	control	Panel4
New2	initial	Displays	control	Text10
New2	initial	Displays	control	Text11
New2	initial	Displays	control	Text12
New2	initial	Displays	control	Text13
New2	initial	Displays	control	Text14
New2	initial	Displays	control	Text15
New2	initial	Displays	control	Text2
New2	initial	Displays	control	Text3
New2	initial	Displays	control	Text4
New2	initial	Displays	control	Text5
New2	initial	Displays	control	Text6
New2	initial	Displays	control	Text7
New2	initial	Displays	control	Text8
New2	initial	Displays	control	TrendObject2
New2	initial	Displays	control	TrendObject3
New2	initial	Displays	setting	Panel1
New2	initial	Displays	setting	Panel2
New2	initial	Displays	setting	Panel3
New2	initial	Displays	setting	ReturntoDisplayButton1
New2	initial	Displays	setting	Text10
New2	initial	Displays	setting	Text2
New2	initial	Displays	setting	Text3
New2	initial	Displays	setting	Text4
New2	initial	Displays	setting	Text8
New2	initial	Displays	setting	Text9
New2	initial_acum	Displays	control	NumericDisplay4
New2	initial_acum	Displays	control	Text12
New2	initial_pom	Displays	control	MomentaryPushButton1
New2	initial_pom	Displays	control	NumericDisplay4
New2	initial_pom	Displays	control	Text10
New2	initial_pom	Displays	control	Text11
New2	initial_pom	Displays	control	Text12
New2	initial_start	Displays	control	MomentaryPushButton1
New2	OsaX.DriveStatus	Displays	control	MomentaryPushButton1
New2	OsaX.DriveStatus	Displays	control	NumericDisplay4
New2	OsaX.DriveStatus	Displays	control	Text11
New2	OsaX.DriveStatus	Displays	control	Text12
New2	OsaX.NegHardOvertravelFault	Displays	control	MultistateIndicator2
New2	OsaX.NegSoftOvertravelFault	Displays	control	MultistateIndicator2
New2	OsaX.PosHardOvertravelFault	Displays	control	MultistateIndicator1
New2	OsaX.PosSoftOvertravelFault	Displays	control	MultistateIndicator1
New2	OsaY.DriveStatus	Displays	control	MomentaryPushButton1
New2	OsaY.DriveStatus	Displays	control	NumericDisplay4
New2	OsaY.DriveStatus	Displays	control	Text11
New2	OsaY.DriveStatus	Displays	control	Text12
New2	OsaY.NegHardOvertravelFault	Displays	control	MultistateIndicator13
New2	OsaY.NegSoftOvertravelFault	Displays	control	MultistateIndicator13
New2	OsaY.PosHardOvertravelFault	Displays	control	MultistateIndicator14
New2	OsaY.PosSoftOvertravelFault	Displays	control	MultistateIndicator14

Shortcut Name	Tag Name	Component Type	Component Name	Object Name
New2	OsaZ.DriveStatus	Displays	control	MomentaryPushButton1
New2	OsaZ.DriveStatus	Displays	control	NumericDisplay4
New2	OsaZ.DriveStatus	Displays	control	Text11
New2	OsaZ.DriveStatus	Displays	control	Text12
New2	OsaZ.NegHardOvertravelFault	Displays	control	MultistateIndicator16
New2	OsaZ.NegSoftOvertravelFault	Displays	control	MultistateIndicator16
New2	OsaZ.PosHardOvertravelFault	Displays	control	MultistateIndicator15
New2	OsaZ.PosSoftOvertravelFault	Displays	control	MultistateIndicator15
New2	x_fault	Displays	control	GotoDisplayButton1
New2	x_fault	Displays	control	MomentaryPushButton2
New2	x_fault	Displays	control	MomentaryPushButton3
New2	x_fault	Displays	control	MomentaryPushButton4
New2	x_fault	Displays	control	MomentaryPushButton5
New2	x_fault	Displays	control	MomentaryPushButton8
New2	x_fault	Displays	control	MultistateIndicator4
New2	x_man_accel	Displays	setting	NumericInputEnable1
New2	x_man_deccel	Displays	setting	NumericInputEnable8
New2	x_man_gohome	Displays	control	MomentaryPushButton5
New2	x_man_left	Displays	control	MomentaryPushButton3
New2	x_man_reset	Displays	control	MomentaryPushButton2
New2	x_man_right	Displays	control	MomentaryPushButton4
New2	x_man_speed	Displays	setting	NumericInputEnable4
New2	x_position	Displays	control	NumericDisplay1
New2	x_position	Displays	control	TrendObject2
New2	x_position	Displays	control	TrendObject3
New2	x_SOT_NegMemory	Displays	control	MomentaryPushButton9
New2	x_SOT_Ok_To_Override	Displays	control	MomentaryPushButton9
New2	x_SOT_PosMemory	Displays	control	MomentaryPushButton9
New2	x_speed	Displays	control	NumericDisplay2
New2	y_fault	Displays	control	MomentaryPushButton19
New2	y_fault	Displays	control	MomentaryPushButton20
New2	y_fault	Displays	control	MomentaryPushButton21
New2	y_fault	Displays	control	MomentaryPushButton6
New2	y_fault	Displays	control	MomentaryPushButton8
New2	y_fault	Displays	control	MultistateIndicator3
New2	y_man_accel	Displays	setting	NumericInputEnable2
New2	y_man_deccel	Displays	setting	NumericInputEnable9
New2	y_man_gohome	Displays	control	MomentaryPushButton21
New2	y_man_left	Displays	control	MomentaryPushButton20
New2	y_man_reset	Displays	control	MomentaryPushButton6
New2	y_man_right	Displays	control	MomentaryPushButton19
New2	y_man_speed	Displays	setting	NumericInputEnable6
New2	y_man_speed	Displays	setting	NumericInputEnable7
New2	y_position	Displays	control	NumericDisplay5
New2	y_position	Displays	control	TrendObject2
New2	y_position	Displays	control	TrendObject3
New2	y_SOT_NegMemory	Displays	control	MomentaryPushButton10
New2	y_SOT_Ok_To_Override	Displays	control	MomentaryPushButton10
New2	y_SOT_PosMemory	Displays	control	MomentaryPushButton10
New2	y_speed	Displays	control	NumericDisplay9
New2	z_fault	Displays	control	MomentaryPushButton22
New2	z_fault	Displays	control	MomentaryPushButton23
New2	z_fault	Displays	control	MomentaryPushButton24
New2	z_fault	Displays	control	MomentaryPushButton7
New2	z_fault	Displays	control	MomentaryPushButton8
New2	z_fault	Displays	control	MultistateIndicator5
New2	z_man_accel	Displays	setting	NumericInputEnable3
New2	z_man_deccel	Displays	setting	NumericInputEnable10
New2	z_man_down	Displays	control	MomentaryPushButton22
New2	z_man_gohome	Displays	control	MomentaryPushButton24
New2	z_man_reset	Displays	control	MomentaryPushButton7
New2	z_man_up	Displays	control	MomentaryPushButton23
New2	z_position	Displays	control	BarGraph1
New2	z_position	Displays	control	NumericDisplay8
New2	z_position	Displays	control	TrendObject2
New2	z_SOT_NegMemory	Displays	control	MomentaryPushButton11
New2	z_SOT_Ok_To_Override	Displays	control	MomentaryPushButton11
New2	z_SOT_PosMemory	Displays	control	MomentaryPushButton11
New2	z_speed	Displays	control	NumericDisplay10

1.2 RSLINX ENTERPRISE

1.2.1 Properties

<u>Primary Server</u>	<u>Server Type</u>
localhost	RSLinxEnterprise.OPCServer.1

1.2.2 Device Shortcuts

<u>Shortcut Name</u>	<u>Local Device</u>	<u>Target Device</u>
New2	1756-A7/A.Controler1	1756-A7/A.Controler1
L63	1756-A10/A.2.test_MS	1756-A10/A.2.test_MS