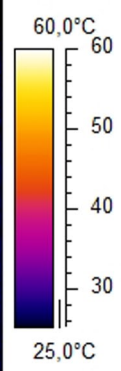
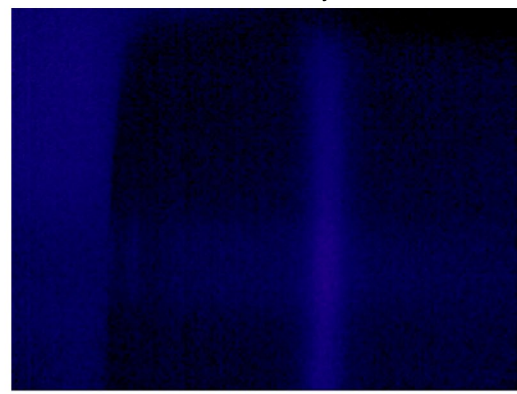


Příloha 1

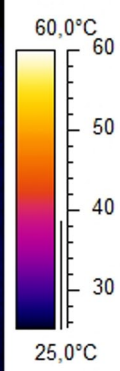
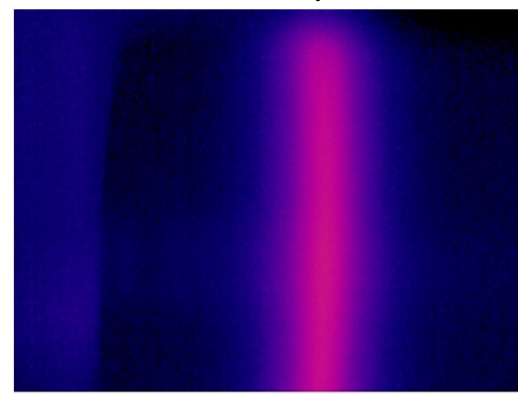
Čas t = 1 s

Max povrchová teplota obrobku je 29,0 °C



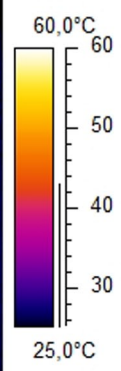
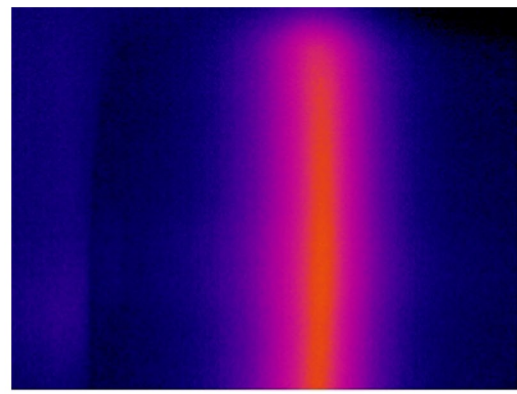
Čas t = 2 s

Max povrchová teplota obrobku je 39,2 °C



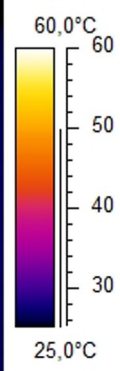
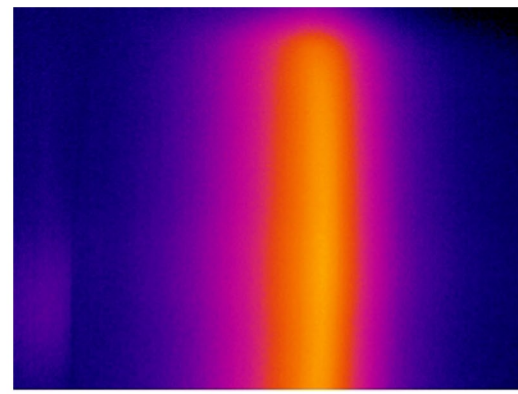
Čas t = 3 s

Max povrchová teplota obrobku je 43,7 °C



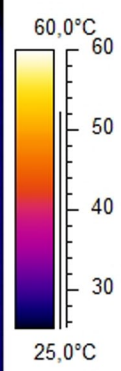
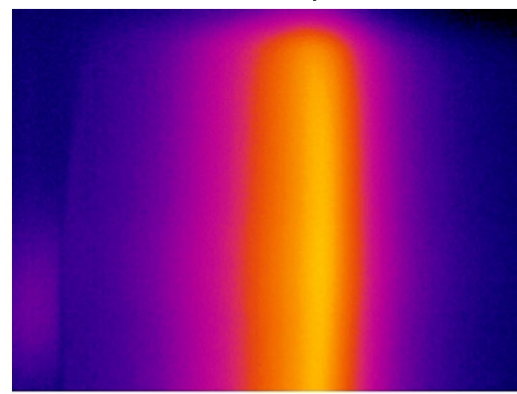
Čas t = 4 s

Max povrchová teplota obrobku je 50,4 °C



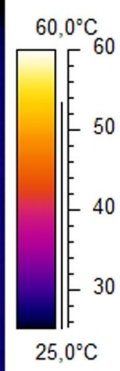
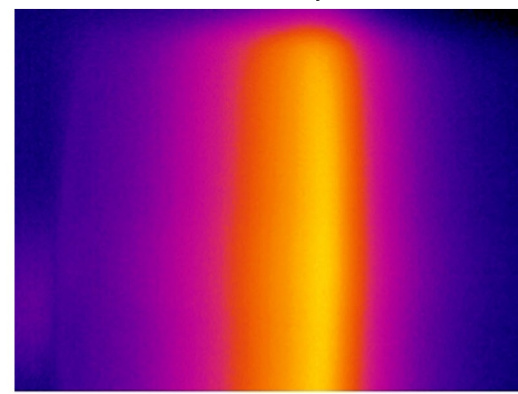
Čas t = 5 s

Max povrchová teplota obrobku je 52,7 °C



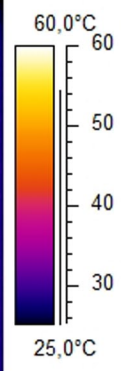
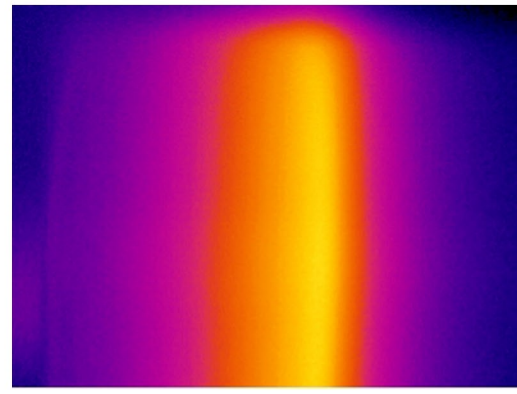
Čas t = 6 s

Max povrchová teplota obrobku je 53,9 °C



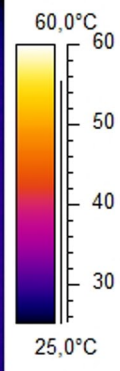
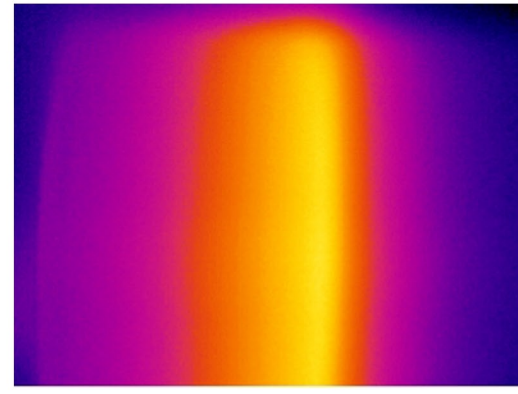
Čas t = 7 s

Max povrchová teplota obrobku je 54,9 °C



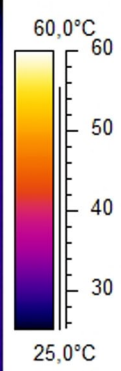
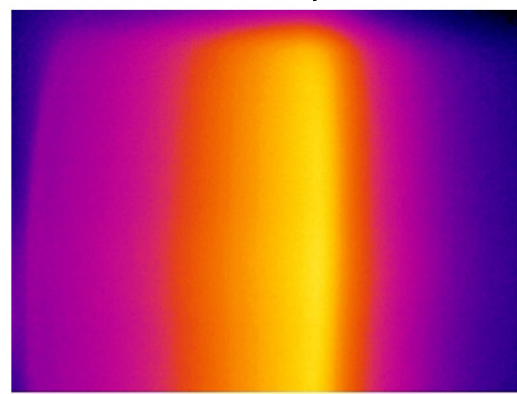
Čas t = 8 s

Max povrchová teplota obrobku je 55,8 °C



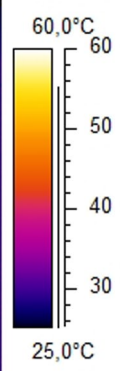
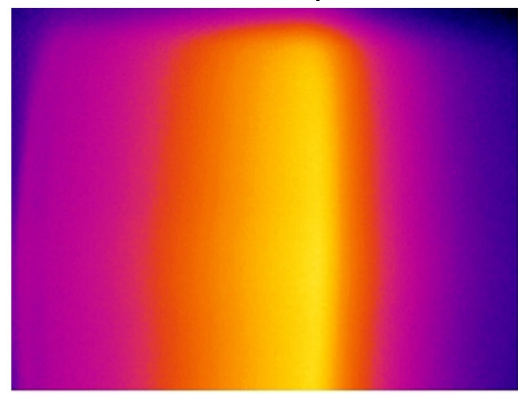
Čas t = 9 s

Max povrchová teplota obrobku je 55,8 °C



Čas t = 10 s

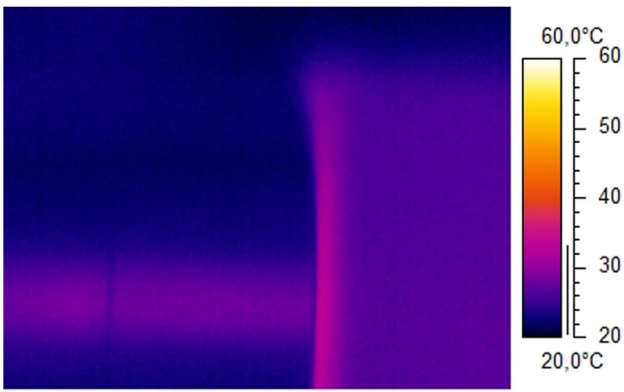
Max povrchová teplota obrobku je 55,9 °C



Příloha 2

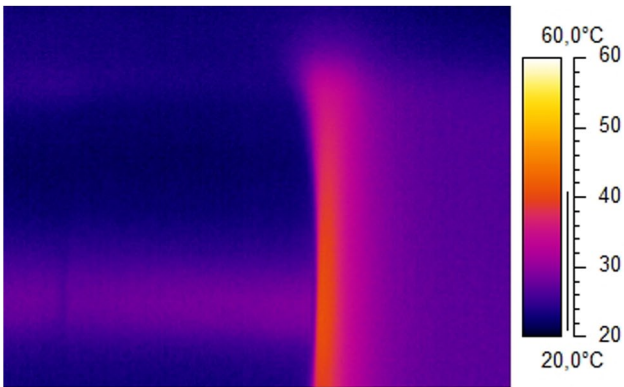
Čas t = 1 s

Max. povrchová teplota obrobku je 33,9 °C



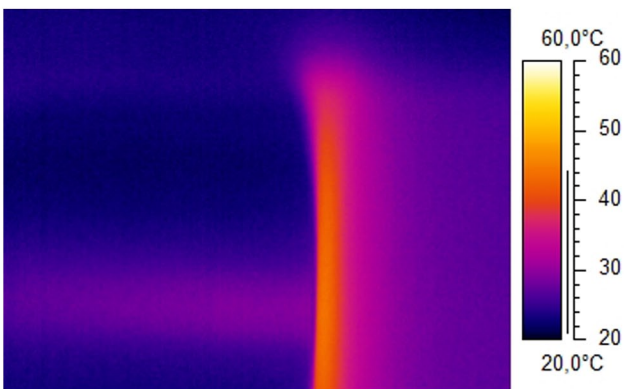
Čas t = 4 s

Max. povrchová teplota obrobku je 41,7 °C



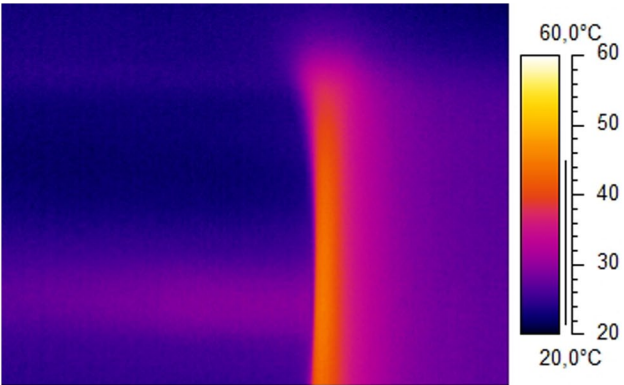
Čas t = 7 s

Max. povrchová teplota obrobku je 44,6 °C



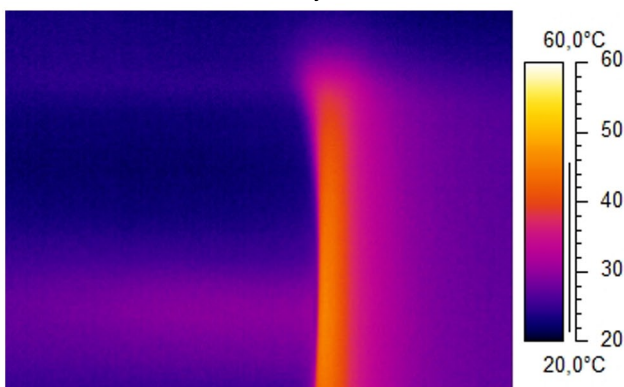
Čas t = 10 s

Max. povrchová teplota obrobku je 45,6 °C



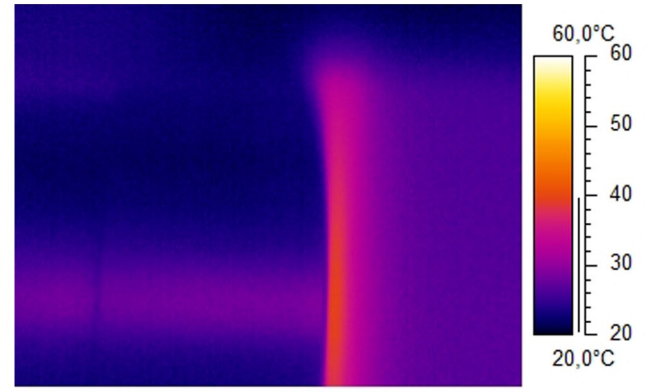
Čas t = 12 s

Max. povrchová teplota obrobku je 46 °C



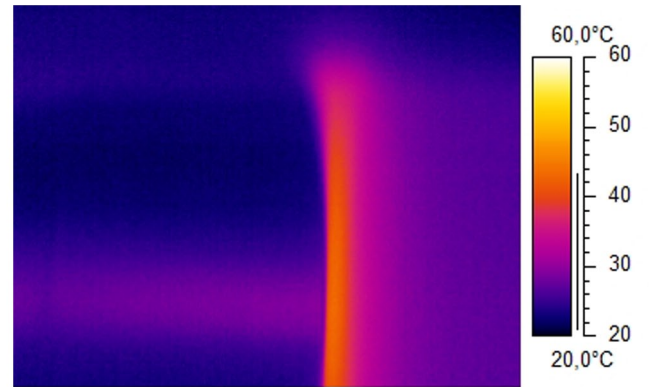
Čas t = 2,5 s

Max. povrchová teplota obrobku je 40,2 °C



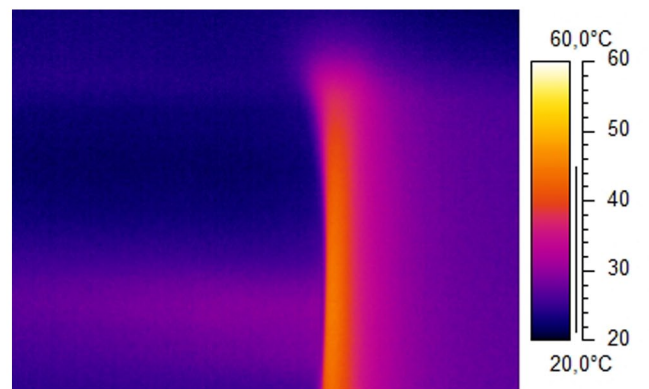
Čas t = 5,5 s

Max. povrchová teplota obrobku je 44,0 °C



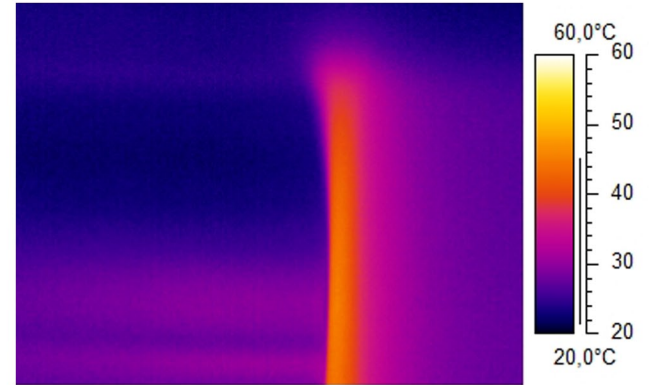
Čas t = 8,5 s

Max. povrchová teplota obrobku je 45,4 °C



Čas t = 11 s

Max. povrchová teplota obrobku je 45,4 °C



Čas t = 13 s

Max. povrchová teplota obrobku je 35,3 °C

