



**VYSOKÉ UČENÍ TECHNICKÉ V BRNĚ**

BRNO UNIVERSITY OF TECHNOLOGY

**FAKULTA STAVEBNÍ**

FACULTY OF CIVIL ENGINEERING

**ÚSTAV POZEMNÍHO STAVITELSTVÍ**

INSTITUTE OF BUILDING STRUCTURES

**PRÍLOHA Č. 6 – HLUKOVÉ MAPY**

**BAKALÁŘSKÁ PRÁCE**

BACHELOR'S THESIS

**AUTOR PRÁCE**

AUTHOR

**Jakub Neuner**

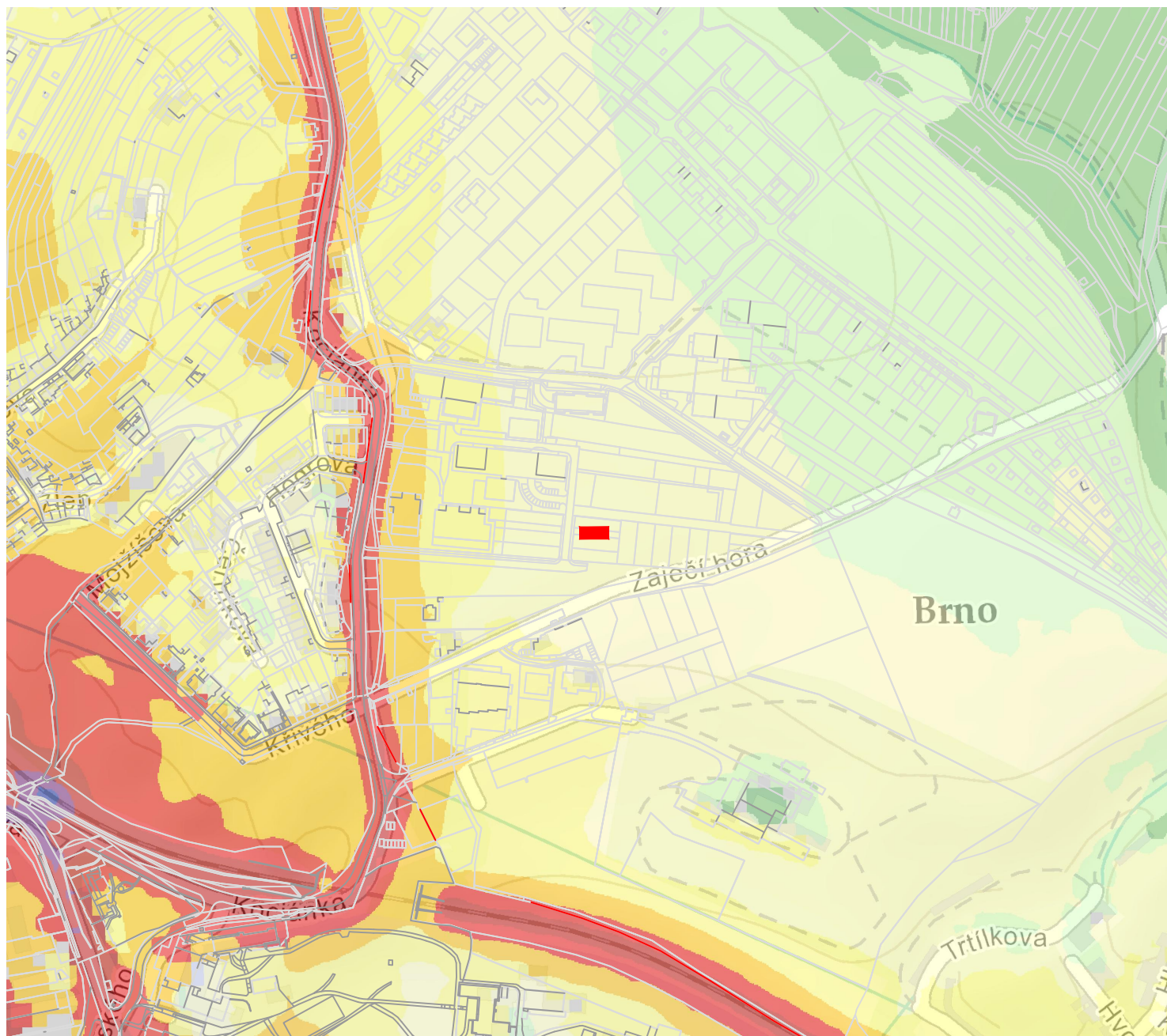
**VEDOUCÍ PRÁCE**

SUPERVISOR

**doc. Ing. KAREL ŠUHAJDA, Ph.D.**

**BRNO 2018**

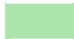
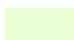



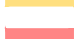
## Hluková mapa riešeného územia, deň



### Legenda značenia

 RIEŠENÝ OBJEKT

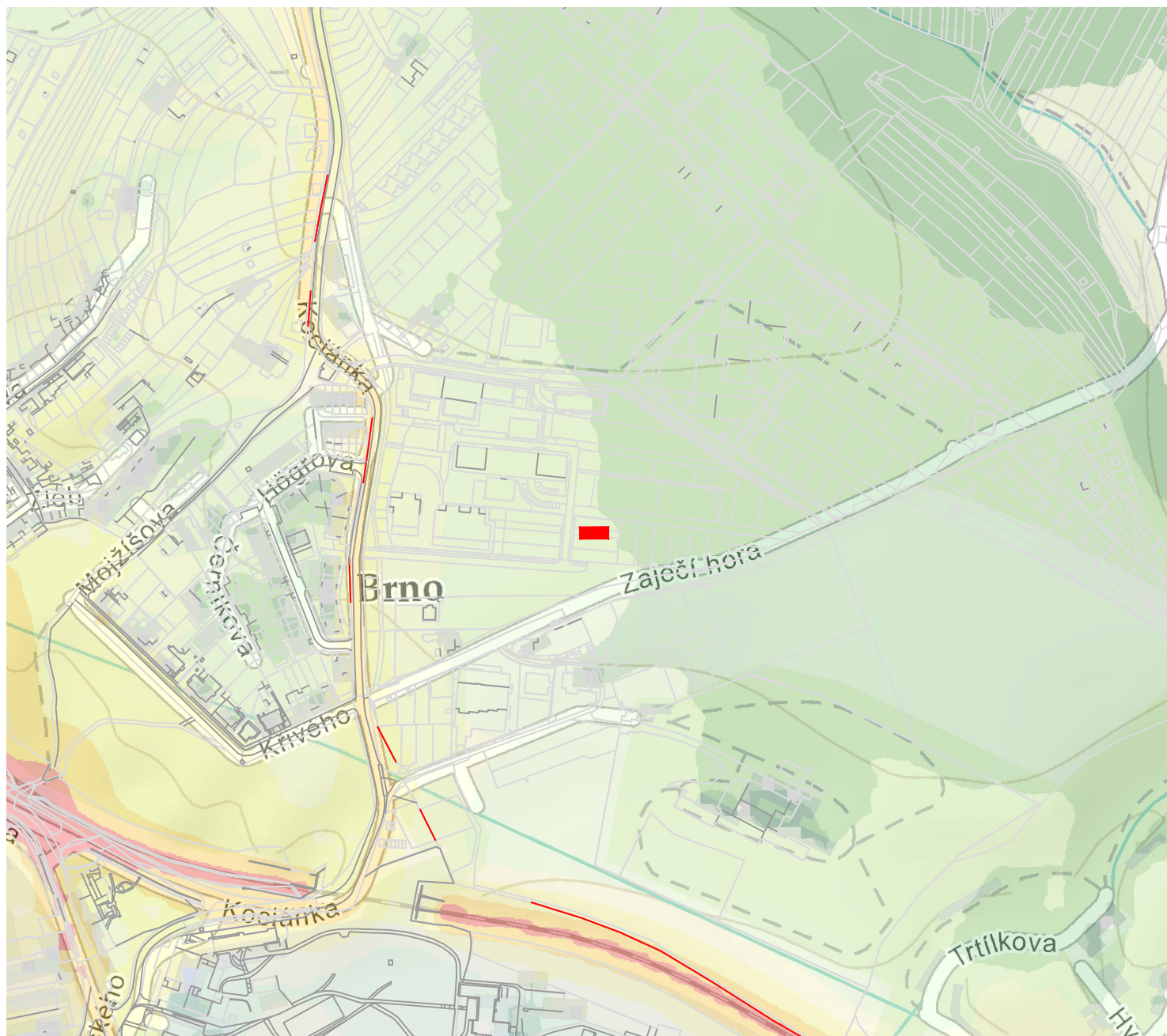
### Pásma hladín hlukového ukazatela L<sub>dvn</sub>

	40-45 dB
	45-50 dB
	50-55 dB
	55-60 dB
	60-65 dB
	60-65 dB

Výpočtová výška: 4m

Výpočtový raster: 10m


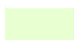




## Hluková mapa riešeného územia, noc



### Legenda značenia

 RIEŠENÝ OBJEKT

### Pásma hladín hlukového ukazatela L<sub>dvn</sub>

	40-45 dB
	45-50 dB
	50-55 dB
	55-60 dB
	60-65 dB
	60-65 dB

Výpočtová výška: 4m

Výpočtový raster: 10m