

# klavesnice\_PanelView

## FACTORYTALK VIEW APPLICATION DOCUMENTATION

May 24, 2011

### TABLE OF CONTENTS

<b>1</b>	<b>KLAVESNICE_PANELVIEW . . . . .</b>	<b>3</b>
1.1	KLAVESNICE_PANELVIEW . . . . .	4
1.1.1	SYSTEMS . . . . .	5
1.1.1.1	Systems\Project Settings . . . . .	5
1.1.1.2	Systems\Runtime Security . . . . .	5
1.1.1.3	Systems\Diagnostics List Setup . . . . .	5
1.1.1.4	Systems\GlobalConnections . . . . .	5
1.1.1.5	Systems\Startup . . . . .	6
1.1.2	TAG DATABASE . . . . .	7
1.1.2.1	Tags\Tag List . . . . .	7
1.1.2.2	Tags\Tags Cross Reference . . . . .	7
1.1.3	GRAPHICS . . . . .	9
1.1.3.1	Graphics\Displays . . . . .	9
1.1.3.1.1	Graphics\Displays\{INFORMATION} . . . . .	9
1.1.3.1.2	Graphics\Displays\{ALARM} . . . . .	10
1.1.3.1.3	Graphics\Displays\{DIAGNOSTICS} . . . . .	11
1.1.3.1.4	Graphics\Displays\klavesnice_new . . . . .	12
1.1.3.1.5	Graphics\Displays\ADMIN . . . . .	14
1.1.3.2.5	Graphics\GlobalObjects . . . . .	15
1.1.3.2.6	Graphics\GlobalObjects\jedna . . . . .	16
1.1.3.2.7	Graphics\GlobalObjects\dva . . . . .	17
1.1.3.3.7	Graphics\Global Objects Cross Reference . . . . .	17
1.1.3.4.7	Graphics\Images . . . . .	17
1.1.3.4.8	Graphics\Images\Arrow Down . . . . .	18
1.1.3.4.9	Graphics\Images\Arrow Left . . . . .	19
1.1.3.4.10	Graphics\Images\Arrow Right . . . . .	20
1.1.3.4.11	Graphics\Images\Arrow Up . . . . .	21
1.1.3.4.12	Graphics\Images\Backspace . . . . .	22
1.1.3.4.13	Graphics\Images\End . . . . .	23
1.1.3.4.14	Graphics\Images\Enter . . . . .	24
1.1.3.4.15	Graphics\Images\Home . . . . .	25
1.1.3.4.16	Graphics\Images\Page Down . . . . .	26
1.1.3.4.17	Graphics\Images\Page Up . . . . .	27
1.1.3.4.18	Graphics\Images\Stack light (Red On) . . . . .	28
1.1.3.4.19	Graphics\Images\Traffic signal (Green On) . . . . .	29
1.1.3.4.20	Graphics\Images\Square rectangular lamp (Red Off) . . . . .	30
1.1.3.4.21	Graphics\Images\Square rectangular lamp (Green Off) . . . . .	31
1.1.3.4.22	Graphics\Images\Square rectangular lamp (Green On) . . . . .	32
1.1.3.4.23	Graphics\Images\Square rectangular lamp (Red On) . . . . .	33
1.1.3.4.24	Graphics\Images\1 . . . . .	34
1.1.3.4.25	Graphics\Images\2 . . . . .	35
1.1.3.4.26	Graphics\Images\3 . . . . .	36
1.1.3.4.27	Graphics\Images\4 . . . . .	37
1.1.3.4.28	Graphics\Images\5 . . . . .	38
1.1.3.4.29	Graphics\Images\6 . . . . .	39
1.1.3.4.30	Graphics\Images\7 . . . . .	40
1.1.3.4.31	Graphics\Images\8 . . . . .	41
1.1.3.4.32	Graphics\Images\9 . . . . .	42
1.1.3.4.33	Graphics\Images\Zero . . . . .	43
1.1.3.4.34	Graphics\Images\Square blank key . . . . .	44
1.1.3.4.35	Graphics\Images\Escape . . . . .	45
1.1.3.4.36	Graphics\Images\Left arrow . . . . .	46
1.1.3.5.36	Graphics\Parameters . . . . .	46
1.1.3.6.36	Graphics\Local Messages . . . . .	46
1.1.4	ALARMS . . . . .	47
1.1.4.1	Alarms\Alarm Setup . . . . .	47
1.1.5	INFORMATION . . . . .	48
1.1.5.1	Information\Information Setup . . . . .	48
1.1.5.2	Information\Information Messages . . . . .	48
1.1.6	LOGIC AND CONTROL . . . . .	49
1.1.6.1	LogicControl\Macros . . . . .	49
1.1.6.1.1	LogicControl\Macros\klavesy . . . . .	49
1.1.6.1.2	LogicControl\Macros\admin . . . . .	49
1.1.7	DATALOG . . . . .	50
1.1.7.1	Datalog\Datalog Models . . . . .	50
1.1.8	RECIPEPLUS . . . . .	51
1.1.8.1	RecipePlus\RecipePlus Setup . . . . .	51
1.1.8.2	RecipePlus\RecipePlus Editor . . . . .	51
1.1.9	DIRECT TAGS . . . . .	52

1.1.9.1	Direct Tags\Direct Tags Cross Reference . . . . .	52
1.2	RSLINX ENTERPRISE . . . . .	53

klavesnice\_PanelView

FACTORYTALK VIEW APPLICATION DOCUMENTATION

May 24, 2011

1 KLAVESNICE\_PANELVIEW

<u>Name</u>	<u>Description</u>
klavesnice_PanelView	

# 1.1 KLAVESNICE\_PANELVIEW

Properties	Value
Name	klavesnice_PanelView
Description	
Project file	C:\Documents and Settings\All Users\Documents\RSView Enterprise\ME\HMI Projects\klavesnice_PanelView
Number of displays	7
Licensed maximum	Unlimited

1.1.1.1 SYSTEMS

1.1.1.1.1 Systems\Project Settings

1.1.1.1.1.1 General

Option	Selection
Project window size	320*240
Width	320
Height	240
Compact Machine Edition application	YES

1.1.1.1.1.2 Runtime

Option	Selection	Content
Title Bar	NO	
Border	NO	
Control Box	NO	
Minimize button	NO	
Project window position: Top	0	
Project window position: Left	0	
Enable auto logout	YES	
Inactivity period (minutes)	1	
Return to graphic on logout	YES	klavesnice_new
Parameter file for graphic	NO	
Parameter list for graphic	YES	

1.1.1.1.1.3 Tags used by Component

Tag Name	Tag Type	Tag Description
----------	----------	-----------------

1.1.1.1.2 Systems\Runtime Security

1.1.1.1.2.1 ME Runtime 4.0 and later

AccountID	Login Macro	Logout Macro	A	B	C	D	E	F	G	H	I	J	K	L	M	N	O	P
DEFAULT			Y	Y	Y	Y	Y	Y	Y	Y	Y	Y	Y	Y	Y	Y	Y	Y

1.1.1.1.2.2 ME Runtime 3.20 and earlier

AccountID	Login Macro	Logout Macro	A	B	C	D	E	F	G	H	I	J	K	L	M	N	O	P
DEFAULT			Y	Y	Y	Y	Y	Y	Y	Y	Y	Y	Y	Y	Y	Y	Y	Y

1.1.1.1.3 Systems\Diagnostics List Setup

1.1.1.1.3.1 Log Messages to printer when

Option	Selection
Error occur	NO
Warning occur	NO
Information occur	NO
Audit occur	NO

1.1.1.1.3.2 Runtime display

Option	Selection
Display name	[DIAGNOSTICS]
Error occur	YES
Warning occur	YES
Information occur	NO
Audit occur	NO
Maximum number of messages	200

1.1.1.1.4 Systems\GlobalConnections

1.1.1.1.4.1 General

Option	Selection
Date and time output interval(seconds)	60
Maximum update rate	100 millisecond

1.1.1.4.2 Connection

<u>Connection</u>	<u>Tag or Expression</u>
Replace Display Number	
Display Print Active	
Year	
Day of Week	
Month	
Day of Month	
Hour	
Minute	
Second	
Remote Display Number	{[klavesnice_2]admin_visu}
Remote Display Print	
Remote Date and Time	
Remote Year	
Remote Month	
Remote Day of Month	
Remote Hour	
Remote Minute	
Remote Second	
Remote Backlight Intensity	
Remote Macro1	
Remote Macro2	
Remote Macro3	
Remote Macro4	
Remote Macro5	
MERuntime RAM Usage	
Total RAM Usage	
Available RAM	
Remote RAM Usage	
Close an On Top Display	
Close All On Top Displays	
Parameter File	
Use Parameter List	
Parameter Tag #1:	
Parameter Tag #2:	
Parameter Tag #3:	
Parameter Tag #4:	
Parameter Tag #5:	
Parameter Tag #6:	
Parameter Tag #7:	
Parameter Tag #8:	
Parameter Tag #9:	
Parameter Tag #10:	

1.1.1.4.3 Tags used by Component

<u>Tag Name</u>	<u>Tag Type</u>	<u>Tag Description</u>
[klavesnice_2]admin_visu		

1.1.1.5 Systems\Startup

1.1.1.5.1 Start when project is run

<u>Option</u>	<u>Selection</u>	<u>Content</u>
Alarms	NO	
Information messages	NO	
Data logging	NO	
Startup macro	NO	
Shutdown macro	NO	
Initial graphic	YES	klavesnice_new
Parameter file for the initial graphic	YES	
Parameter list for the initial graphic	NO	

1.1.1.5.2 Tags used by Component

<u>Tag Name</u>	<u>Tag Type</u>	<u>Tag Description</u>
-----------------	-----------------	------------------------

1.1.1.2 TAG DATABASE

1.1.1.2.1 Tags\Tag List

1.1.1.2.1.1 Summary

Option	Total number
Tags	27
Device tags	0
Device analog tags	0
Device digital tags	0
Device string tags	0
Memory tags	10
Memory analog tags	0
Memory digital tags	0
Memory string tags	10

1.1.1.2.1.2 Analog Tag List

Tag Name	Tag Type	Tag Description	Minimum	Maximum	Data Source	Initial Value	Retentive	Address	Scale	Offset	Data Type
system\DateAndTimeInteger	Analog Tags	System date and time integer	0.00	2147395600.00	System Tag	--	--	--	1.00	0.00	Long Integer
system\DayOfMonth	Analog Tags	Day of Month	1.00	31.00	System Tag	--	--	--	1.00	0.00	Unsigned Integer
system\DayOfWeek	Analog Tags	Day of Week (Sunday = 1)	1.00	7.00	System Tag	--	--	--	1.00	0.00	Unsigned Integer
system\DayOfYear	Analog Tags	Day of Year	1.00	366.00	System Tag	--	--	--	1.00	0.00	Unsigned Integer
system\Hour	Analog Tags	Hour of day (0 - 23)	0.00	23.00	System Tag	--	--	--	1.00	0.00	Unsigned Integer
system\Minute	Analog Tags	Minutes (0 - 59)	0.00	59.00	System Tag	--	--	--	1.00	0.00	Unsigned Integer
system\Month	Analog Tags	Month	1.00	12.00	System Tag	--	--	--	1.00	0.00	Unsigned Integer
system\Second	Analog Tags	Seconds (0 - 59)	0.00	59.00	System Tag	--	--	--	1.00	0.00	Unsigned Integer
system\Year	Analog Tags	Year	0.00	32000.00	System Tag	--	--	--	1.00	0.00	Unsigned Integer

1.1.1.2.1.3 Digital Tag List

Tag Name	Tag Type	Tag Description	Data Source	Initial Value	Retentive	Address
system\BlinkFast	Digital Tags	Changes every 100 ms	System Tag	--	--	--
system\BlinkSlow	Digital Tags	Changes every 500 ms	System Tag	--	--	--

1.1.1.2.1.4 String Tag List

Tag Name	Tag Type	Tag Description	Length	Data Source	Initial Value	Retentive	Address
name	String Tags		82	Memory Tag	jmeno 1	NO	--
name0	String Tags		82	Memory Tag	0	NO	--
name1	String Tags		82	Memory Tag	1	NO	--
name2	String Tags		82	Memory Tag	2	NO	--
pin1	String Tags		82	Memory Tag	1521	NO	--
s0	String Tags		1	Memory Tag		NO	--
s1	String Tags	*	1	Memory Tag	*	NO	--
s2	String Tags	**	2	Memory Tag	**	NO	--
s3	String Tags	***	3	Memory Tag	***	NO	--
s4	String Tags	****	4	Memory Tag	****	NO	--
system\AlarmResetDateAndTimeString	String Tags	Date and time string of last Alarm Status reset	48	System Tag	--	--	--
system\Date	String Tags	System date string	48	System Tag	--	--	--
system\DateAndTimeString	String Tags	System date and time string	48	System Tag	--	--	--
system\MonthString	String Tags	Month as string	48	System Tag	--	--	--
system\Time	String Tags	System time string	48	System Tag	--	--	--
system\User	String Tags	Currently logged on User	82	System Tag	--	--	--

1.1.1.2.2 Tags\Tags Cross Reference

1.1.1.2.2.1 Tag Cross Reference

Tag Name	Tag Type	Tag Description	Component Type	Component Name	Object Name
s0	String Tags		Displays	klavesnice_new	StringDisplay1
s1	String Tags	*	Displays	klavesnice_new	StringDisplay1
s2	String Tags	**	Displays	klavesnice_new	StringDisplay1
s3	String Tags	***	Displays	klavesnice_new	StringDisplay1
s4	String Tags	****	Displays	klavesnice_new	StringDisplay1

1.1.1.2.2.2 Unused Tag Info

Tag Name	Tag Type	Tag Description
name	String Tags	
name0	String Tags	
name1	String Tags	
name2	String Tags	
pin1	String Tags	
system\AlarmResetDateAndTimeString	String Tags	Date and time string of last Alarm Status reset
system\BlinkFast	Digital Tags	Changes every 100 ms

<u>Tag Name</u>	<u>Tag Type</u>	<u>Tag Description</u>
system\BlinkSlow	Digital Tags	Changes every 500 ms
system\Date	String Tags	System date string
system\DateAndTimeInteger	Analog Tags	System date and time integer
system\DateAndTimeString	String Tags	System date and time string
system\DayOfMonth	Analog Tags	Day of Month
system\DayOfWeek	Analog Tags	Day of Week (Sunday = 1)
system\DayOfYear	Analog Tags	Day of Year
system\Hour	Analog Tags	Hour of day (0 - 23)
system\Minute	Analog Tags	Minutes (0 - 59)
system\Month	Analog Tags	Month
system\MonthString	String Tags	Month as string
system\Second	Analog Tags	Seconds (0 - 59)
system\Time	String Tags	System time string
system\User	String Tags	Currently logged on User
system\Year	Analog Tags	Year



1.1.3 GRAPHICS

1.1.3.1 Graphics\Displays

1.1.3.1.1 Graphics\Displays\[INFORMATION]



1.1.3.1.1.1 Graphics|[INFORMATION]|Display Settings|General

Option	Selection
Display Type	On Top Cannot Be Replaced
Security Code	*
Title Bar	NO
Disable Initial Input Focus	NO
Maximum Tag Update Rate	1.00 seconds
Size	Specify Size in Pixels
Specify Size Width	320
Specify Size Height	40
Position X	0
Position Y	87
Background Color	0xC0C0C0

1.1.3.1.1.2 Graphics|[INFORMATION]|Display Settings|Behavior

Option	Selection
Startup Command	
Shutdown Command	
Disable Highlight When Object has Focus	NO
Highlight Color of Objects with Input Focus	0x00FF00

1.1.3.1.1.3 Animated Display Objects

Object Name	Grouping	X	Y	Property	Expression
CloseDisplayButton	288	3		Close Display Button :Key Assignment	F2
InformationAckButton	256	3		ActiveX Control :Key Assignment	F1

1.1.3.1.1.4 Object Properties

Object Name	Grouping	X	Y
InformationMessageDisplay	1	3	

1.1.3.1.1.5 Tags used by Component

Tag Name	Tag Type	Tag Description
----------	----------	-----------------

1.1.3.1.2 Graphics\Displays\[ALARM]



1.1.3.1.2.1 Graphics|[ALARM]|Display Settings|General

Option	Selection
Display Type	On Top Cannot Be Replaced
Security Code	*
Title Bar	NO
Disable Initial Input Focus	NO
Maximum Tag Update Rate	1.00 seconds
Size	Specify Size in Pixels
Specify Size Width	320
Specify Size Height	105
Position X	0
Position Y	120
Background Color	0xC0C0C0

1.1.3.1.2.2 Graphics|[ALARM]|Display Settings|Behavior

Option	Selection
Startup Command	
Shutdown Command	
Disable Highlight When Object has Focus	NO
Highlight Color of Objects with Input Focus	0x00FF00

1.1.3.1.2.3 Animated Display Objects

Object Name	Grouping	X	Y	Property	Expression
CloseDisplayButton		213	63	Close Display Button :Key Assignment	F4
ClearAlarmButton		163	63	ActiveX Control :Key Assignment	F3
SilenceAlarmsButton		112	63	ActiveX Control :Key Assignment	F2
AcknowledgeAlarmButton		62	63	ActiveX Control :Key Assignment	F1

1.1.3.1.2.4 Object Properties

Object Name	Grouping	X	Y
AlarmBanner1		6	5

1.1.3.1.2.5 Tags used by Component

Tag Name	Tag Type	Tag Description
----------	----------	-----------------

1.1.3.1.3 Graphics\Displays\[DIAGNOSTICS]



1.1.3.1.3.1 Graphics|[DIAGNOSTICS]|Display Settings|General

<u>Option</u>	<u>Selection</u>
Display Type	On Top Cannot Be Replaced
Security Code	*
Title Bar	NO
Disable Initial Input Focus	NO
Maximum Tag Update Rate	1.00 seconds
Size	Specify Size in Pixels
Specify Size Width	320
Specify Size Height	80
Position X	0
Position Y	5
Background Color	0xC0C0C0

1.1.3.1.3.2 Graphics|[DIAGNOSTICS]|Display Settings|Behavior

<u>Option</u>	<u>Selection</u>
Startup Command	
Shutdown Command	
Disable Highlight When Object has Focus	NO
Highlight Color of Objects with Input Focus	0x00FF00

1.1.3.1.3.3 Animated Display Objects

<u>Object Name</u>	<u>Grouping</u>	<u>X</u>	<u>Y</u>	<u>Property</u>	<u>Expression</u>
CloseDisplayButton		256	40	Close Display Button :Key Assignment	F5
MoveDownButton		224	40	Move Down Button :Key Assignment	F4
MoveUpButton		192	40	Move Up Button :Key Assignment	F3
DiagnosticsClearAllButton		64	40	ActiveX Control :Key Assignment	F2
DiagnosticsClearButton		32	40	ActiveX Control :Key Assignment	F1

1.1.3.1.3.4 Object Properties

<u>Object Name</u>	<u>Grouping</u>	<u>X</u>	<u>Y</u>
DiagnosticsList		2	2

1.1.3.1.3.5 Tags used by Component

<u>Tag Name</u>	<u>Tag Type</u>	<u>Tag Description</u>
-----------------	-----------------	------------------------

1.1.3.1.4 Graphics\Displays\klavesnice\_new



1.1.3.1.4.1 Graphics|klavesnice\_new|Display Settings|General

Option	Selection
Display Type	Replace
Display Number	2
Security Code	*
Disable Initial Input Focus	NO
Maximum Tag Update Rate	1.00 seconds
Background Color	0xFFFFFFFF

1.1.3.1.4.2 Graphics|klavesnice\_new|Display Settings|Behavior

Option	Selection
Startup Command	
Shutdown Command	
Disable Highlight When Object has Focus	NO
Highlight Color of Objects with Input Focus	0x00FF00

1.1.3.1.4.3 Animated Display Objects

Object Name	Grouping	X	Y	Property	Expression
MomentaryPushButton13		118	167	Momentary Push Button: Connections: Value	{[klavesnice_2]visu_kl_kriz}
StringDisplay1		179	18	String Display: Connections: Value	
MomentaryPushButton10		10	166	Momentary Push Button: Connections: Value	{[klavesnice_2]visu_kl_hvez}
MomentaryPushButton11		65	166	Momentary Push Button: Connections: Value	{[klavesnice_2]visu_kl_0}
MomentaryPushButton9		117	111	Momentary Push Button: Connections: Value	{[klavesnice_2]visu_kl_9}
MomentaryPushButton8		63	111	Momentary Push Button: Connections: Value	{[klavesnice_2]visu_kl_8}
MomentaryPushButton7		10	113	Momentary Push Button: Connections: Value	{[klavesnice_2]visu_kl_7}
MomentaryPushButton6		116	60	Momentary Push Button: Connections: Value	{[klavesnice_2]visu_kl_6}
MomentaryPushButton5		63	60	Momentary Push Button: Connections: Value	{[klavesnice_2]visu_kl_5}
MomentaryPushButton4		10	60	Momentary Push Button: Connections: Value	{[klavesnice_2]visu_kl_4}
MomentaryPushButton3		115	11	Momentary Push Button: Connections: Value	{[klavesnice_2]visu_kl_3}
MomentaryPushButton2		63	10	Momentary Push Button: Connections: Value	{[klavesnice_2]visu_kl_2}
MomentaryPushButton1		10	10	Momentary Push Button: Connections: Value	{[klavesnice_2]visu_kl_1}

1.1.3.1.4.4 Object Properties

Object Name	Grouping	X	Y
TimeDateDisplay1		168	170
NumericInputEnable23		173	75
Text1		217	85

1.1.3.1.4.5 Tags used by Component

Tag Name	Tag Type	Tag Description
[klavesnice_2]visu_kl_0		
[klavesnice_2]visu_kl_1		
[klavesnice_2]visu_kl_2		
[klavesnice_2]visu_kl_3		
[klavesnice_2]visu_kl_4		
[klavesnice_2]visu_kl_5		
[klavesnice_2]visu_kl_6		
[klavesnice_2]visu_kl_7		
[klavesnice_2]visu_kl_8		
[klavesnice_2]visu_kl_9		
[klavesnice_2]visu_kl_hvez		
[klavesnice_2]visu_kl_kriz		

<u>Tag Name</u>	<u>Tag Type</u>	<u>Tag Description</u>
[klavesnice_2]znak_1		
[klavesnice_2]znak_2		
[klavesnice_2]znak_3		
[klavesnice_2]znak_4		
s0	String Tags	
s1	String Tags	*
s2	String Tags	**
s3	String Tags	***
s4	String Tags	****

1.1.3.1.5 Graphics\Displays\ADMIN



1.1.3.1.5.1 Graphics|ADMIN|Display Settings|General

Option	Selection
Display Type	Replace
Display Number	1
Security Code	*
Disable Initial Input Focus	NO
Maximum Tag Update Rate	1.00 seconds
Background Color	0xFFFFFFFF

1.1.3.1.5.2 Graphics|ADMIN|Display Settings|Behavior

Option	Selection
Startup Command	
Shutdown Command	
Disable Highlight When Object has Focus	NO
Highlight Color of Objects with Input Focus	0x00FF00

1.1.3.1.5.3 Animated Display Objects

Object Name	Grouping	X	Y	Property	Expression
MomentaryPushButton1		263	130	Momentary Push Button: Connections: Value	{klavesnice_2}chyba_0}
NumericDisplay2		276	160	Numeric Display: Connections: Value	{klavesnice_2}poradi}
NumericDisplay1		276	81	Numeric Display: Connections: Value	{klavesnice_2}visu_chyba}
StringInputEnable1		110	165	String Input Enable: Connections: Value	{klavesnice_2}string}
PilotedListSelector1		2	2	Pilot Ctrl List Selector : States: 1	/*S:0 {klavesnice_2}string1}*/
.	.	.	.	Pilot Ctrl List Selector : States: 2	/*S:0 {klavesnice_2}string2}*/
.	.	.	.	Pilot Ctrl List Selector : States: 3	/*S:0 {klavesnice_2}string3}*/
.	.	.	.	Pilot Ctrl List Selector : States: 4	/*S:0 {klavesnice_2}string4}*/
.	.	.	.	Pilot Ctrl List Selector : States: 5	/*S:0 {klavesnice_2}string5}*/
.	.	.	.	Pilot Ctrl List Selector : States: 6	/*S:0 {klavesnice_2}string6}*/
.	.	.	.	Pilot Ctrl List Selector : States: 7	/*S:0 {klavesnice_2}string7}*/
.	.	.	.	Pilot Ctrl List Selector : States: 8	/*S:0 {klavesnice_2}string8}*/
.	.	.	.	Pilot Ctrl List Selector : States: 9	/*S:0 {klavesnice_2}string9}*/
.	.	.	.	Pilot Ctrl List Selector : States: 10	/*S:0 {klavesnice_2}string10}*/
.	.	.	.	Pilot Ctrl List Selector : States: 11	/*S:0 {klavesnice_2}string11}*/
.	.	.	.	Pilot Ctrl List Selector : States: 12	/*S:0 {klavesnice_2}string12}*/
.	.	.	.	Pilot Ctrl List Selector : States: 13	/*S:0 {klavesnice_2}string13}*/
.	.	.	.	Pilot Ctrl List Selector : States: 14	/*S:0 {klavesnice_2}string14}*/
.	.	.	.	Pilot Ctrl List Selector: Connections: Value	{klavesnice_2}poradi}
NumericDisplay5		224	1	Numeric Display: Connections: Value	{klavesnice_2}visu_pin}
NumericInputCursorPoint1		262	50	Numeric Input Cursor Point: Connections: Value	{klavesnice_2}visu_new_pin}

1.1.3.1.5.4 Object Properties

Object Name	Grouping	X	Y
Text5		179	125
Text4		176	52
Text3		184	163
GotoDisplayButton1		225	201
Text2		177	80
Text1		180	11
EnterButton1		74	165
MoveUpButton1		39	165
MoveDownButton1		4	165
TimeDateDisplay1		-2	205
ShutdownButton1		160	208

### 1.1.3.1.5.5 Tags used by Component

<u>Tag Name</u>	<u>Tag Type</u>	<u>Tag Description</u>
[klavesnice_2]chyba_0		
[klavesnice_2]poradi		
[klavesnice_2]string		
[klavesnice_2]string1		
[klavesnice_2]string10		
[klavesnice_2]string11		
[klavesnice_2]string12		
[klavesnice_2]string13		
[klavesnice_2]string14		
[klavesnice_2]string2		
[klavesnice_2]string3		
[klavesnice_2]string4		
[klavesnice_2]string5		
[klavesnice_2]string6		
[klavesnice_2]string7		
[klavesnice_2]string8		
[klavesnice_2]string9		
[klavesnice_2]visu_chyba		
[klavesnice_2]visu_new_pin		
[klavesnice_2]visu_pin		

1.1.3.2.6 Graphics\GlobalObjects\jedna

1

1.1.3.2.6.1 Graphics|jedna|Display Settings|General

<u>Option</u>	<u>Selection</u>
Display Type	Replace
Display Number	1
Security Code	*
Disable Initial Input Focus	NO
Maximum Tag Update Rate	1.00 seconds
Background Color	0xFFFFFFFF

1.1.3.2.6.2 Graphics|jedna|Display Settings|Behavior

<u>Option</u>	<u>Selection</u>
Startup Command	
Shutdown Command	
Disable Highlight When Object has Focus	NO
Highlight Color of Objects with Input Focus	0x00FF00

1.1.3.2.6.3 Object Properties

<u>Object Name</u>	<u>Grouping</u>	<u>X</u>	<u>Y</u>
Text1		14	24

1.1.3.2.6.4 Global Object Parameter Definitions

<u>Object Name</u>	<u>Name</u>	<u>Description</u>
--------------------	-------------	--------------------

1.1.3.2.6.5 Tags used by Component

<u>Tag Name</u>	<u>Tag Type</u>	<u>Tag Description</u>
-----------------	-----------------	------------------------

1.1.3.2.6.6 Global Objects Cross Reference

<u>Base Object Name</u>	<u>Display Name</u>	<u>Object Name</u>
-------------------------	---------------------	--------------------



1.1.3.2.7 Graphics\GlobalObjects\dva

2

1.1.3.2.7.1 Graphics|dva|Display Settings|General

<u>Option</u>	<u>Selection</u>
Display Type	Replace
Display Number	1
Security Code	*
Disable Initial Input Focus	NO
Maximum Tag Update Rate	1.00 seconds
Background Color	0xFFFFFFFF

1.1.3.2.7.2 Graphics|dva|Display Settings|Behavior

<u>Option</u>	<u>Selection</u>
Startup Command	
Shutdown Command	
Disable Highlight When Object has Focus	NO
Highlight Color of Objects with Input Focus	0x00FF00

1.1.3.2.7.3 Object Properties

<u>Object Name</u>	<u>Grouping</u>	<u>X</u>	<u>Y</u>
Text1		2	18

1.1.3.2.7.4 Global Object Parameter Definitions

<u>Object Name</u>	<u>Name</u>	<u>Description</u>
--------------------	-------------	--------------------

1.1.3.2.7.5 Tags used by Component

<u>Tag Name</u>	<u>Tag Type</u>	<u>Tag Description</u>
-----------------	-----------------	------------------------

1.1.3.2.7.6 Global Objects Cross Reference

<u>Base Object Name</u>	<u>Display Name</u>	<u>Object Name</u>
-------------------------	---------------------	--------------------

1.1.3.3.7 Graphics\Global Objects Cross Reference

<u>Base Object Name</u>	<u>Display Name</u>	<u>Object Name</u>
-------------------------	---------------------	--------------------

1.1.3.4.8 Graphics\Images\Arrow Down



<u>Option</u>	<u>Selection</u>
Image file name	C:\Documents and Settings\All Users\Documents\RSView Enterprise\ME\HMI Projects\klavesnice_PanelView\Images\Arrow Down.bmp
Pixel dimension	11 x 11
Format	Bitmap
Type	Monochrome

1.1.3.4.9 Graphics\Images\Arrow Left



<u>Option</u>	<u>Selection</u>
Image file name	C:\Documents and Settings\All Users\Documents\RSView Enterprise\ME\HMI Projects\klavesnice_PanelView\Images\Arrow Left.bmp
Pixel dimension	11 x 11
Format	Bitmap
Type	Monochrome

1.1.3.4.10 Graphics\Images\Arrow Right



<u>Option</u>	<u>Selection</u>
Image file name	C:\Documents and Settings\All Users\Documents\RSView Enterprise\ME\HMI Projects\klavesnice_PanelView\Images\Arrow Right.bmp
Pixel dimension	11 x 11
Format	Bitmap
Type	Monochrome

1.1.3.4.11 Graphics\Images\Arrow Up



<u>Option</u>	<u>Selection</u>
Image file name	C:\Documents and Settings\All Users\Documents\RSView Enterprise\ME\HMI Projects\klavesnice_PanelView\Images\Arrow Up.bmp
Pixel dimension	11 x 11
Format	Bitmap
Type	Monochrome

1.1.3.4.12 Graphics\Images\Backspace



<u>Option</u>	<u>Selection</u>
Image file name	C:\Documents and Settings\All Users\Documents\RSView Enterprise\ME\HMI Projects\klavesnice_PanelView\Images\Backspace.bmp
Pixel dimension	11 x 11
Format	Bitmap
Type	Monochrome

1.1.3.4.13 Graphics\Images\End



<u>Option</u>	<u>Selection</u>
Image file name	C:\Documents and Settings\All Users\Documents\RSView Enterprise\ME\HMI Projects\klavesnice_PanelView\Images\End.bmp
Pixel dimension	11 x 11
Format	Bitmap
Type	Monochrome

1.1.3.4.14 Graphics\Images\Enter



<u>Option</u>	<u>Selection</u>
Image file name	C:\Documents and Settings\All Users\Documents\RSView Enterprise\ME\HMI Projects\klavesnice_PanelView\Images\Enter.bmp
Pixel dimension	11 x 11
Format	Bitmap
Type	Monochrome



1.1.3.4.15 Graphics\Images\Home



<u>Option</u>	<u>Selection</u>
Image file name	C:\Documents and Settings\All Users\Documents\RSView Enterprise\ME\HMI Projects\klavesnice_PanelView\Images\Home.bmp
Pixel dimension	11 x 11
Format	Bitmap
Type	Monochrome

1.1.3.4.16 Graphics\Images\Page Down



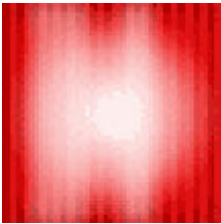
<u>Option</u>	<u>Selection</u>
Image file name	C:\Documents and Settings\All Users\Documents\RSView Enterprise\ME\HMI Projects\klavesnice_PanelView\Images\Page Down.bmp
Pixel dimension	11 x 11
Format	Bitmap
Type	Monochrome

1.1.3.4.17 Graphics\Images\Page Up



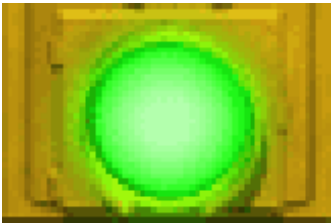
<u>Option</u>	<u>Selection</u>
Image file name	C:\Documents and Settings\All Users\Documents\RSView Enterprise\ME\HMI Projects\klavesnice_PanelView\Images\Page Up.bmp
Pixel dimension	11 x 11
Format	Bitmap
Type	Monochrome

1.1.3.4.18 Graphics\Images\Stack light (Red On)



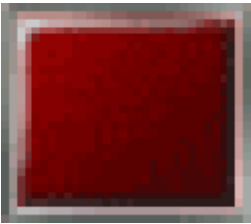
<u>Option</u>	<u>Selection</u>
Image file name	C:\Documents and Settings\All Users\Documents\RSView Enterprise\ME\HMI Projects\klavesnice_PanelView\Images\Stack light (Red On).bmp
Pixel dimension	108 x 108
Format	Bitmap
Type	True color

1.1.3.4.19 Graphics\Images\Traffic signal (Green On)



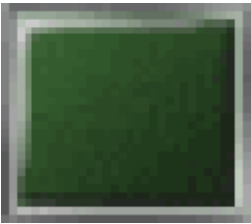
<b><u>Option</u></b>	<b><u>Selection</u></b>
Image file name	C:\Documents and Settings\All Users\Documents\RSView Enterprise\ME\HMI Projects\klavesnice_PanelView\Images\Traffic signal (Green On).bmp
Pixel dimension	162 x 108
Format	Bitmap
Type	True color

1.1.3.4.20 Graphics\Images\Square rectangular lamp (Red Off)



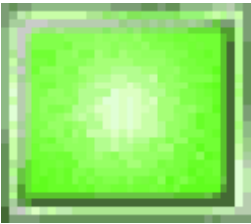
<u>Option</u>	<u>Selection</u>
Image file name	C:\Documents and Settings\All Users\Documents\RSView Enterprise\ME\HMI Projects\klavesnice_PanelView\Images\Square rectangular lamp (Red Off).bmp
Pixel dimension	123 x 108
Format	Bitmap
Type	True color

1.1.3.4.21 Graphics\Images\Square rectangular lamp (Green Off)



<u>Option</u>	<u>Selection</u>
Image file name	C:\Documents and Settings\All Users\Documents\RSView Enterprise\ME\HMI Projects\klavesnice_PanelView\Images\Square rectangular lamp (Green Off).bmp
Pixel dimension	123 x 108
Format	Bitmap
Type	True color

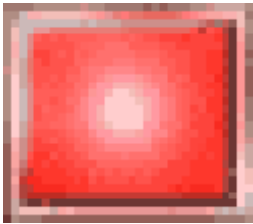
1.1.3.4.22 Graphics\Images\Square rectangular lamp (Green On)



<b><u>Option</u></b>	<b><u>Selection</u></b>
Image file name	C:\Documents and Settings\All Users\Documents\RSView Enterprise\ME\HMI Projects\klavesnice_PanelView\Images\Square rectangular lamp (Green On).bmp
Pixel dimension	123 x 108
Format	Bitmap
Type	True color



1.1.3.4.23 Graphics\Images\Square rectangular lamp (Red On)



<u>Option</u>	<u>Selection</u>
Image file name	C:\Documents and Settings\All Users\Documents\RSView Enterprise\ME\HMI Projects\klavesnice_PanelView\Images\Square rectangular lamp (Red On).bmp
Pixel dimension	123 x 108
Format	Bitmap
Type	True color

1.1.3.4.24 Graphics\Images\1



<u>Option</u>	<u>Selection</u>
Image file name	C:\Documents and Settings\All Users\Documents\RSView Enterprise\ME\HMI Projects\klavesnice_PanelView\Images\1.bmp
Pixel dimension	108 x 108
Format	Bitmap
Type	True color

1.1.3.4.25 Graphics\Images\2



<u>Option</u>	<u>Selection</u>
Image file name	C:\Documents and Settings\All Users\Documents\RSView Enterprise\ME\HMI Projects\klavesnice_PanelView\Images\2.bmp
Pixel dimension	108 x 108
Format	Bitmap
Type	True color

1.1.3.4.26 Graphics\Images\3



<u>Option</u>	<u>Selection</u>
Image file name	C:\Documents and Settings\All Users\Documents\RSView Enterprise\ME\HMI Projects\klavesnice_PanelView\Images\3.bmp
Pixel dimension	108 x 108
Format	Bitmap
Type	True color

1.1.3.4.27 Graphics\Images\4



<u>Option</u>	<u>Selection</u>
Image file name	C:\Documents and Settings\All Users\Documents\RSView Enterprise\ME\HMI Projects\klavesnice_PanelView\Images\4.bmp
Pixel dimension	108 x 108
Format	Bitmap
Type	True color

1.1.3.4.28 Graphics\Images\5



<u>Option</u>	<u>Selection</u>
Image file name	C:\Documents and Settings\All Users\Documents\RSView Enterprise\ME\HMI Projects\klavesnice_PanelView\Images\5.bmp
Pixel dimension	108 x 108
Format	Bitmap
Type	True color

1.1.3.4.29 Graphics\Images\6



<u>Option</u>	<u>Selection</u>
Image file name	C:\Documents and Settings\All Users\Documents\RSView Enterprise\ME\HMI Projects\klavesnice_PanelView\Images\6.bmp
Pixel dimension	108 x 108
Format	Bitmap
Type	True color

1.1.3.4.30 Graphics\Images\7



<u>Option</u>	<u>Selection</u>
Image file name	C:\Documents and Settings\All Users\Documents\RSView Enterprise\ME\HMI Projects\klavesnice_PanelView\Images\7.bmp
Pixel dimension	108 x 108
Format	Bitmap
Type	True color



1.1.3.4.31 Graphics\Images\8



<u>Option</u>	<u>Selection</u>
Image file name	C:\Documents and Settings\All Users\Documents\RSView Enterprise\ME\HMI Projects\klavesnice_PanelView\Images\8.bmp
Pixel dimension	108 x 108
Format	Bitmap
Type	True color

1.1.3.4.32 Graphics\Images\9



<b><u>Option</u></b>	<b><u>Selection</u></b>
Image file name	C:\Documents and Settings\All Users\Documents\RSView Enterprise\ME\HMI Projects\klavesnice_PanelView\Images\9.bmp
Pixel dimension	108 x 108
Format	Bitmap
Type	True color

1.1.3.4.33 Graphics\Images\Zero



<u>Option</u>	<u>Selection</u>
Image file name	C:\Documents and Settings\All Users\Documents\RSView Enterprise\ME\HMI Projects\klavesnice_PanelView\Images\Zero.bmp
Pixel dimension	108 x 108
Format	Bitmap
Type	True color

1.1.3.4.34 Graphics\Images\Square blank key



<u>Option</u>	<u>Selection</u>
Image file name	C:\Documents and Settings\All Users\Documents\RSView Enterprise\ME\HMI Projects\klavesnice_PanelView\Images\Square blank key.bmp
Pixel dimension	108 x 108
Format	Bitmap
Type	True color

1.1.3.4.35 Graphics\Images\Esc



<b><u>Option</u></b>	<b><u>Selection</u></b>
Image file name	C:\Documents and Settings\All Users\Documents\RSView Enterprise\ME\HMI Projects\klavesnice_PanelView\Images\Escape.bmp
Pixel dimension	108 x 108
Format	Bitmap
Type	True color

1.1.3.4.36 Graphics\Images\Left arrow



<u>Option</u>	<u>Selection</u>
Image file name	C:\Documents and Settings\All Users\Documents\RSView Enterprise\ME\HMI Projects\klavesnice_PanelView\Images\Left arrow.bmp
Pixel dimension	108 x 108
Format	Bitmap
Type	True color

1.1.3.5.36 Graphics\Parameters

1.1.3.6.36 Graphics\Local Messages

1.1.4 ALARMS

1.1.4.1 Alarms\Alarm Setup

1.1.4.1.1 Triggers

<u>Triggers</u>	<u>Trigger</u> <u>Type</u>	<u>Trigger</u> <u>Label</u>	<u>Use Ack All</u>	<u>Ack All</u> <u>Value</u>	<u>Handshake</u>	<u>Ack</u>	<u>Remote Ack</u>	<u>Remote Ack</u> <u>HandShake</u>	<u>Messages</u>	<u>Messages</u> <u>Notification</u>	<u>Messages</u> <u>HandShake</u>
-----------------	-------------------------------	--------------------------------	--------------------	--------------------------------	------------------	------------	-------------------	---------------------------------------	-----------------	--	-------------------------------------

1.1.4.1.2 Messages

<u>Triggers</u>	<u>Trigger value</u>	<u>Messages</u>	<u>Display</u>	<u>Audio</u>	<u>Print</u>	<u>Message to Tag</u>	<u>Background</u>	<u>Foreground</u>
-----------------	----------------------	-----------------	----------------	--------------	--------------	-----------------------	-------------------	-------------------

1.1.4.1.3 Advanced

<u>Option</u>	<u>Selection</u>
Current alarms	[ALARM]
History Size	128
Hold time (ms)	250
Maximum update rate (second)	1.00
Silence	
Remote Silence	
Remote Ack All	
Status Reset	
Remote Status Reset	
Close Display	
Remote Close Display	

1.1.4.1.4 Tags used by Component

<u>Tag Name</u>	<u>Tag Type</u>	<u>Tag Description</u>
-----------------	-----------------	------------------------

1.1.5 INFORMATION

1.1.5.1 Information\Information Setup

1.1.5.1.1 Setup

<u>Option</u>	<u>Selection</u>
Display file name	[INFORMATION]
Message file name	
Maximum Update Rate	1.00 seconds
Acknowledge hold time	3.00 seconds

1.1.5.1.2 Connection

<u>Name</u>	<u>Tag or expression</u>
Value	
Ack	

1.1.5.1.3 Tags used by Component

<u>Tag Name</u>	<u>Tag Type</u>	<u>Tag Description</u>
-----------------	-----------------	------------------------

1.1.5.2 Information\Information Messages



1.1.6 LOGIC AND CONTROL

1.1.6.1 LogicControl\Macros

1.1.6.1.1 LogicControl\Macros\klavesy

1.1.6.1.1.1 Form:<Tag>=<Expression>

<u>Tag</u>	<u>Expression</u>
{kl_1}	If {kl_1} == 1 Then disp = 1 Else disp = 0
{kl_2}	If {kl_2} == 1 Then disp = 2 Else disp = 0
{kl_3}	3

1.1.6.1.1.2 Tags used by Component

<u>Tag Name</u>	<u>Tag Type</u>	<u>Tag Description</u>
disp		
kl_1		
kl_2		
kl_3		

1.1.6.1.2 LogicControl\Macros\admin

1.1.6.1.2.1 Form:<Tag>=<Expression>

<u>Tag</u>	<u>Expression</u>
{[klavesnice_2]admin}	

1.1.6.1.2.2 Tags used by Component

<u>Tag Name</u>	<u>Tag Type</u>	<u>Tag Description</u>
[klavesnice_2]admin		

**1.1.7 DATALOG**

**1.1.7.1 Datalog\Datalog Models**

## **klavesnice\_PanelView**

### **1.1.8 RECIPEPLUS**

#### **1.1.8.1 RecipePlus\RecipePlus Setup**

##### **Recipe file location**

Recipe Files Stored in: C:\Documents and Settings\All Users\Documents\RSView Enterprise\ME\HMI Projects\klavesnice\_PanelView\RecipePlus

#### **1.1.8.2 RecipePlus\RecipePlus Editor**

1.1.9 DIRECT TAGS

1.1.9.1 Direct Tags\Direct Tags Cross Reference

<u>Shortcut Name</u>	<u>Tag Name</u>	<u>Component Type</u>	<u>Component Name</u>	<u>Object Name</u>
klavesnice_2	admin	Macros	admin	
klavesnice_2	admin_visu	GlobalConnections	GlobalConnections	
klavesnice_2	chyba_0	Displays	ADMIN	MomentaryPushButton1
klavesnice_2	poradi	Displays	ADMIN	NumericDisplay2
klavesnice_2	poradi	Displays	ADMIN	PilotedListSelector1
klavesnice_2	senzor_1	Displays	MAIN	MultistateIndicator2
klavesnice_2	senzor_1	Displays	klavesnice	MultistateIndicator2
klavesnice_2	string	Displays	MAIN	StringInputEnable1
klavesnice_2	string	Displays	ADMIN	StringInputEnable1
klavesnice_2	string1	Displays	ADMIN	PilotedListSelector1
klavesnice_2	string10	Displays	ADMIN	PilotedListSelector1
klavesnice_2	string11	Displays	ADMIN	PilotedListSelector1
klavesnice_2	string12	Displays	ADMIN	PilotedListSelector1
klavesnice_2	string13	Displays	ADMIN	PilotedListSelector1
klavesnice_2	string14	Displays	ADMIN	PilotedListSelector1
klavesnice_2	string2	Displays	ADMIN	PilotedListSelector1
klavesnice_2	string3	Displays	ADMIN	PilotedListSelector1
klavesnice_2	string4	Displays	ADMIN	PilotedListSelector1
klavesnice_2	string5	Displays	ADMIN	PilotedListSelector1
klavesnice_2	string6	Displays	ADMIN	PilotedListSelector1
klavesnice_2	string7	Displays	ADMIN	PilotedListSelector1
klavesnice_2	string8	Displays	ADMIN	PilotedListSelector1
klavesnice_2	string9	Displays	ADMIN	PilotedListSelector1
klavesnice_2	visu_1	Displays	klavesnice	dva1
klavesnice_2	visu_1	Displays	klavesnice	kl1
klavesnice_2	visu_1	Displays	klavesnice	NumericDisplay1
klavesnice_2	visu_2	Displays	klavesnice	dva
klavesnice_2	visu_2	Displays	klavesnice	kl2
klavesnice_2	visu_2	Displays	klavesnice	NumericDisplay1
klavesnice_2	visu_2	Displays	klavesnice	StringDisplay1
klavesnice_2	visu_2	Displays	klavesnice	tri
klavesnice_2	visu_chyba	Displays	ADMIN	NumericDisplay1
klavesnice_2	visu_kl_0	Displays	klavesnice_new	MomentaryPushButton11
klavesnice_2	visu_kl_1	Displays	klavesnice_new	MomentaryPushButton1
klavesnice_2	visu_kl_2	Displays	klavesnice_new	MomentaryPushButton2
klavesnice_2	visu_kl_3	Displays	klavesnice_new	MomentaryPushButton3
klavesnice_2	visu_kl_4	Displays	klavesnice_new	MomentaryPushButton4
klavesnice_2	visu_kl_5	Displays	klavesnice_new	MomentaryPushButton5
klavesnice_2	visu_kl_6	Displays	klavesnice_new	MomentaryPushButton6
klavesnice_2	visu_kl_7	Displays	klavesnice_new	MomentaryPushButton7
klavesnice_2	visu_kl_8	Displays	klavesnice_new	MomentaryPushButton8
klavesnice_2	visu_kl_9	Displays	klavesnice_new	MomentaryPushButton9
klavesnice_2	visu_kl_hvez	Displays	klavesnice_new	MomentaryPushButton10
klavesnice_2	visu_kl_kriz	Displays	klavesnice_new	MomentaryPushButton13
klavesnice_2	visu_new_pin	Displays	ADMIN	NumericInputCursorPoint1
klavesnice_2	visu_pin	Displays	ADMIN	NumericDisplay5
klavesnice_2	znak_1	Displays	klavesnice_new	StringDisplay1
klavesnice_2	znak_2	Displays	klavesnice_new	StringDisplay1
klavesnice_2	znak_3	Displays	klavesnice_new	StringDisplay1
klavesnice_2	znak_4	Displays	klavesnice_new	StringDisplay1

## 1.2 RSLINX ENTERPRISE

### 1.2.1 Properties

<u>Primary Server</u>	<u>Server Type</u>
-----------------------	--------------------

localhost	RSLinkEnterprise.OPCServer.1
-----------	------------------------------

### 1.2.2 Device Shortcuts

<u>Shortcut Name</u>	<u>Local Device</u>	<u>Target Device</u>
----------------------	---------------------	----------------------

klavesnice_2	CompactLogix System.CompactLogix L23E-QB1 Processor	CompactLogix System.CompactLogix L23E-QB1 Processor
--------------	---	---