

MUNICIPAL CENTRE IN NIVNICE



This project focuses on the design of the new Municipal Center in Nivnice, based on the requirements and inputs provided by the municipality. The building is located closer to the town center, ensuring better accessibility for residents. It is designed as three separate functional units: the municipal office, post office, and wedding hall, which allow for independent operation of each section without mutual interference.

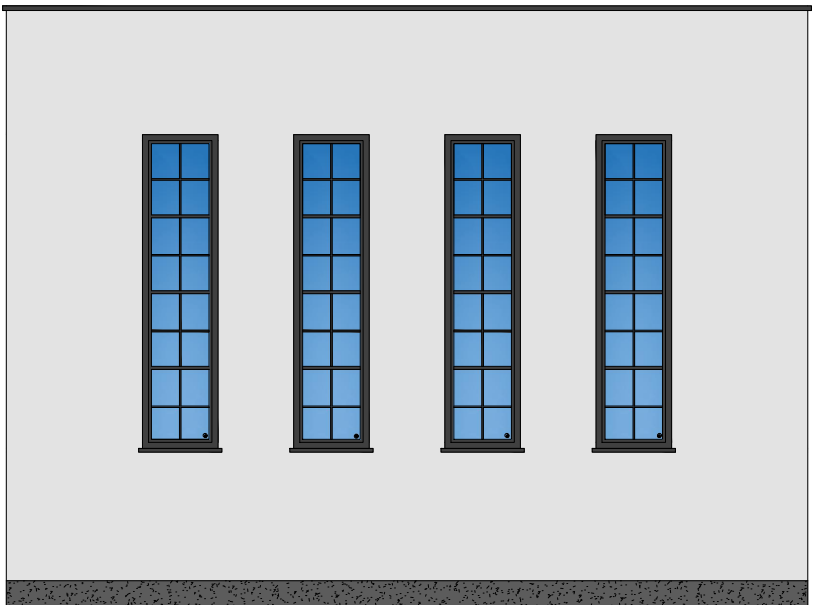
The building is situated in the village of Nivnice in the Zlín region of the Czech Republic. It is a standalone, two-story building with a partial basement, constructed on flat terrain near the cultural center. The building features a flat green roof and an adjacent parking lot.

The new Municipal House is designed as a masonry structure made of ceramic bricks. The horizontal load-bearing structure consists of prefabricated panels, and the floors are connected by an elevator and prefabricated staircase. The building is insulated using the ETICS system with mineral wool. The structure rests on concrete foundation strips.

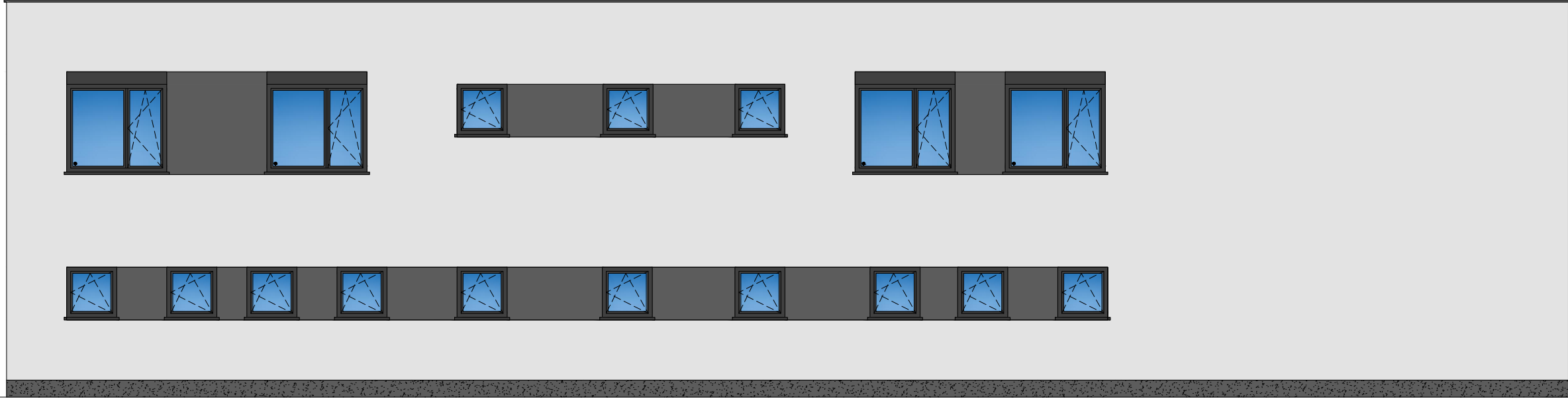
NORTHEAST ELEVATION



SOUTHEAST ELEVATION



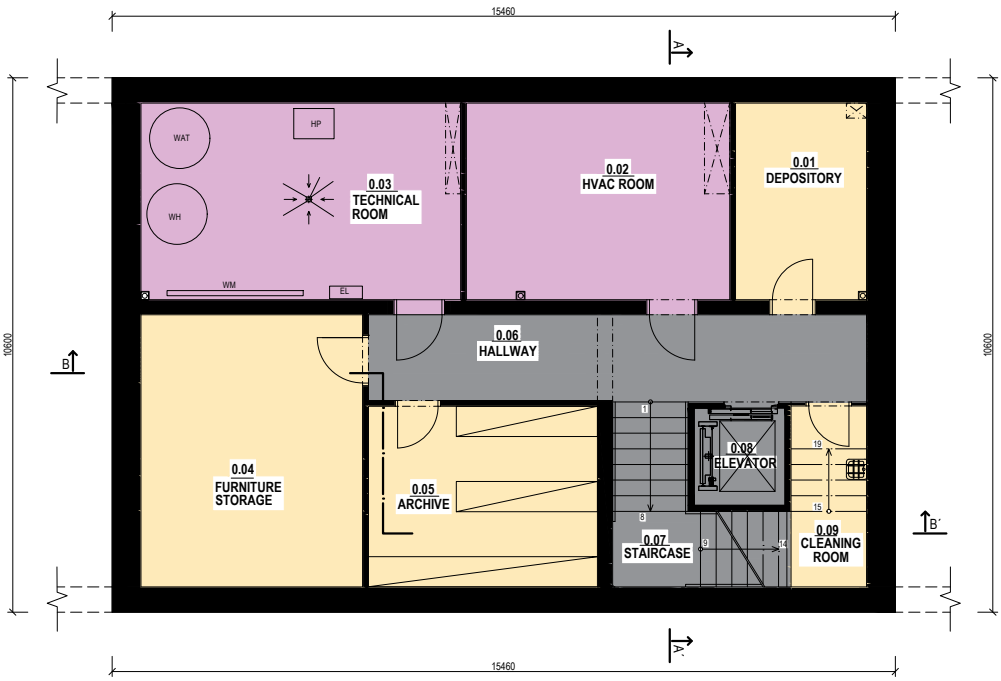
SOUTHWEST ELEVATION



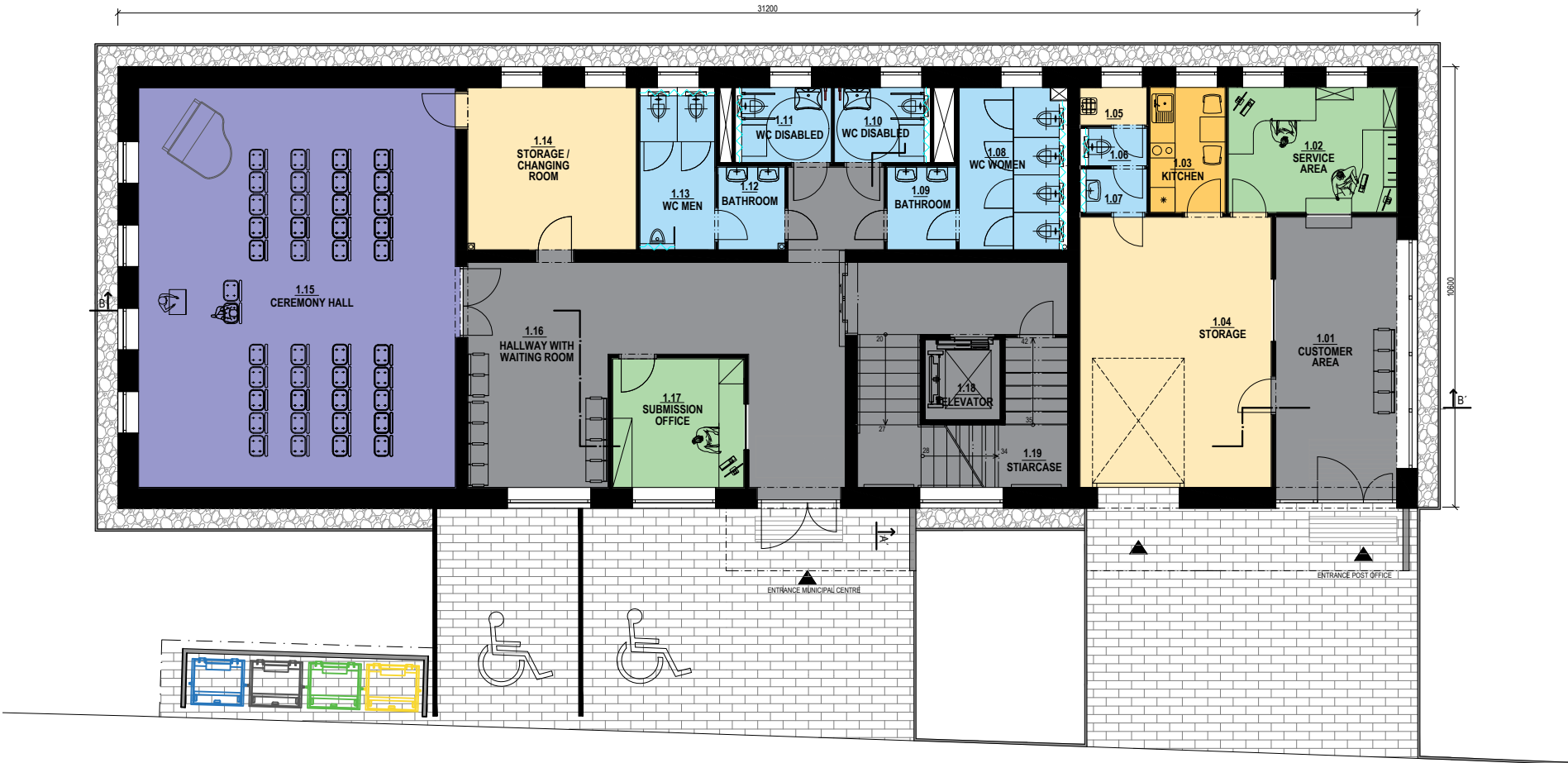
NORTHWEST ELEVATION



BASEMENT



FIRST FLOOR



SECOND FLOOR

