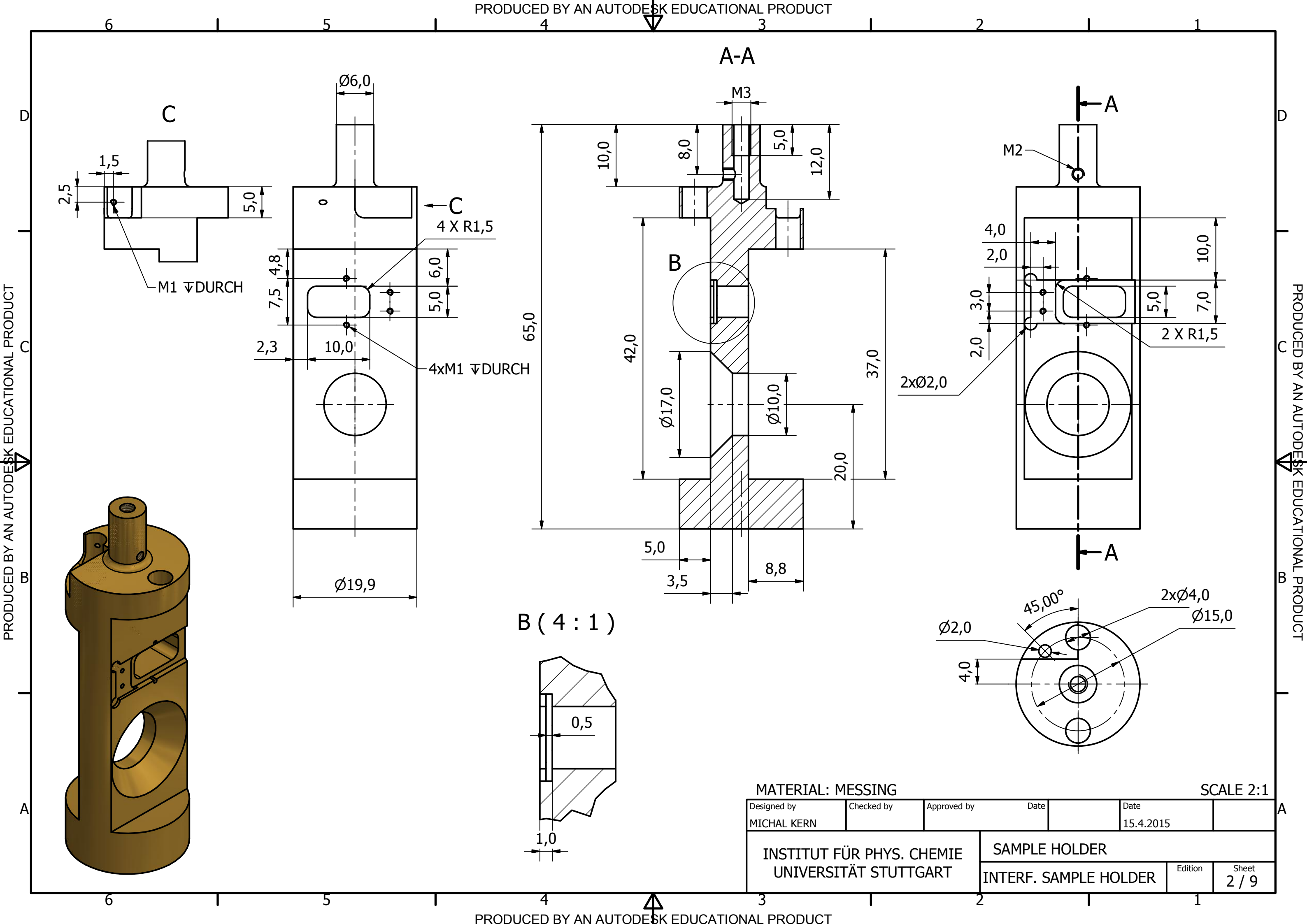
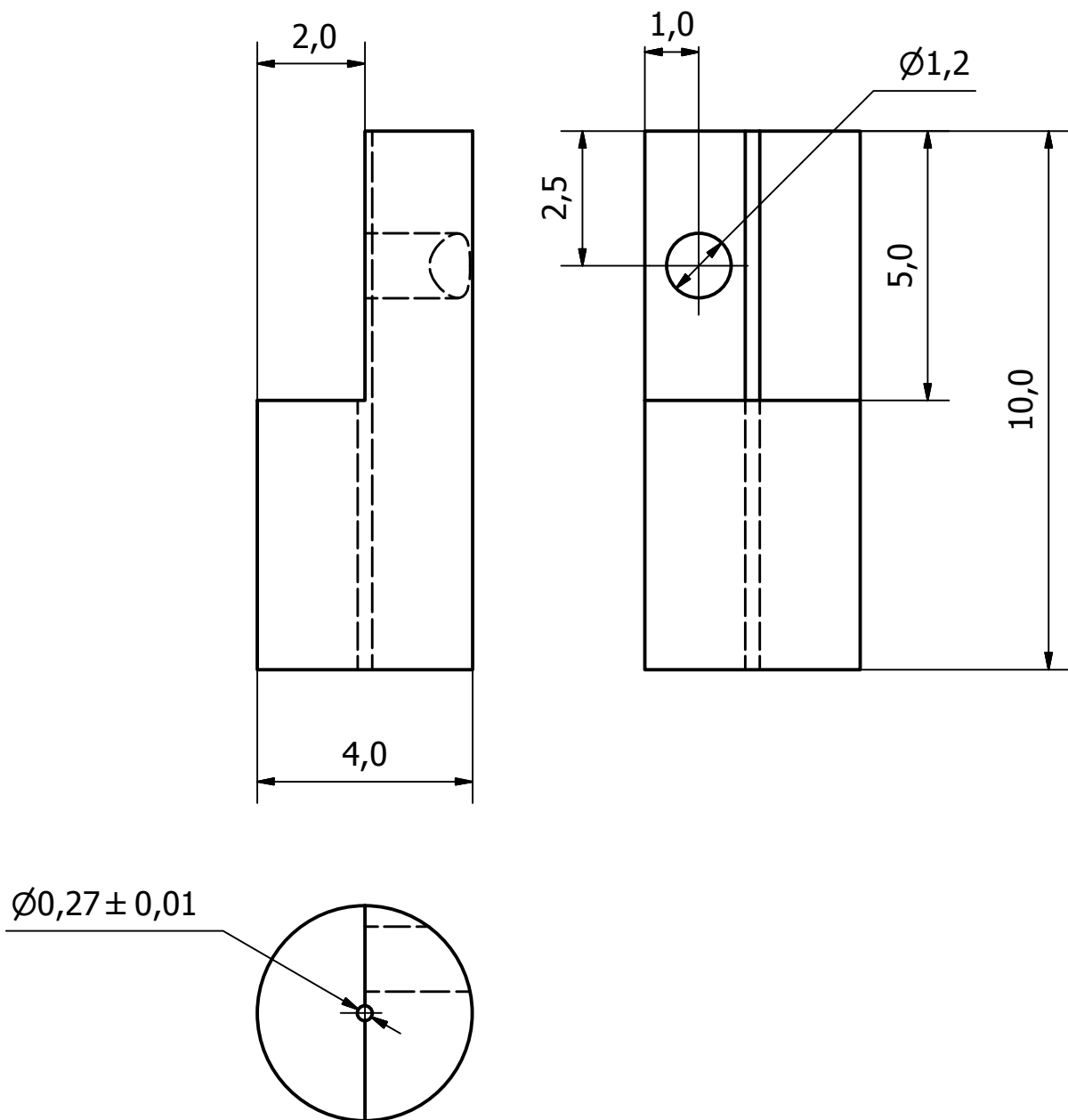


4	1	PIEZO HOLDER ASSEMBLY	5
3	1	FIBER FASTENER 2	4
2	1	FIBER FASTENER 1	3
1	1	SAMPLE HOLDER	2
ITEM	QTY	PART NUMBER	SHEET
Designed by MICHAL KERN	Checked by	Approved by	Date 15.4.2015
INSTITUT FÜR PHYS. CHEMIE UNIVERSITÄT STUTTGART		INTERF. SAMPLE HOLDER ASSEMBLY	
		INTERF. SAMPLE HOLDER	Sheet 1 / 9

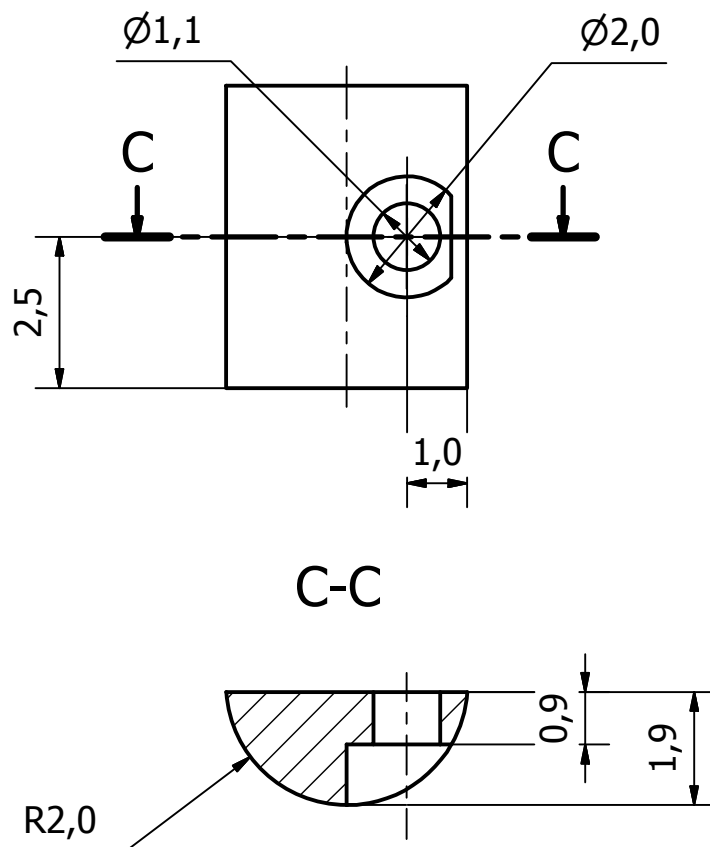




MATERIAL: TEFLON

SCALE 8:1

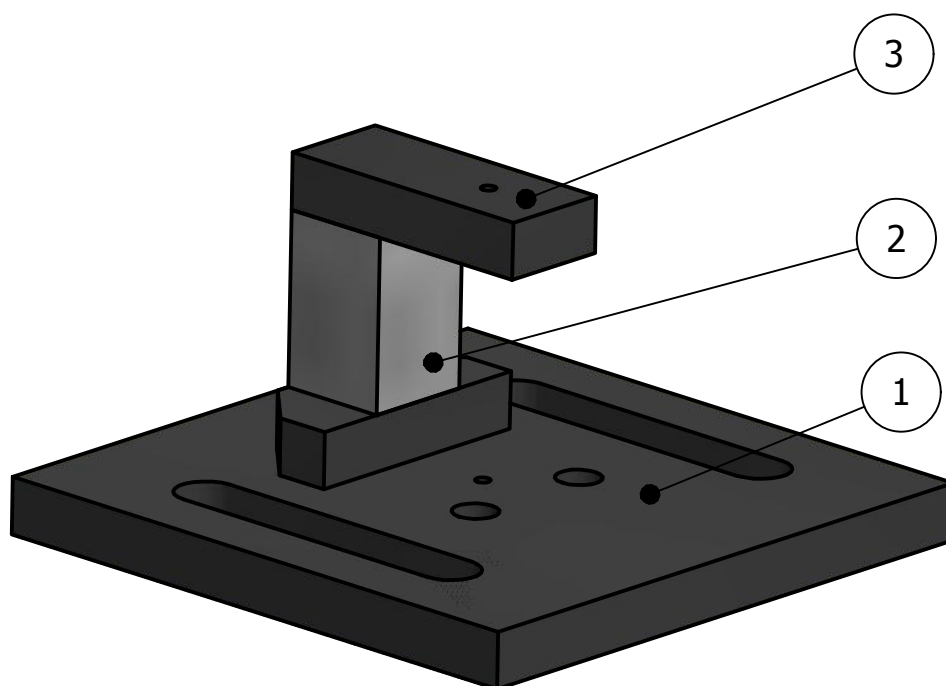
Designed by MICHAL KERN	Checked by	Approved by	Date	Date 15.4.2015	
INSTITUT FÜR PHYS. CHEMIE UNIVERSITÄT STUTTGART			FIBER FASTENER 1		
			INTERF. SAMPLE HOLDER	Edition	Sheet 3 / 9



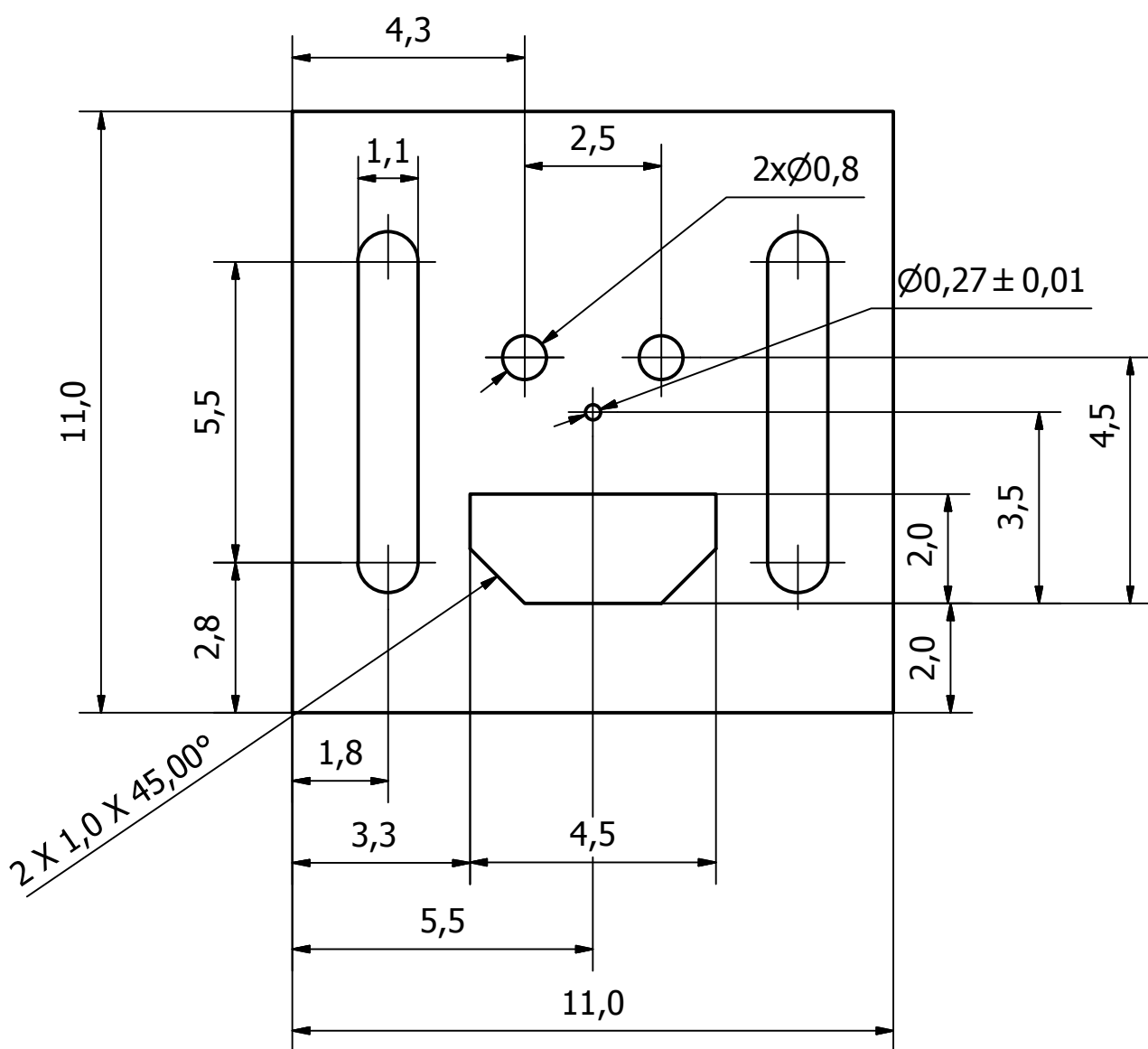
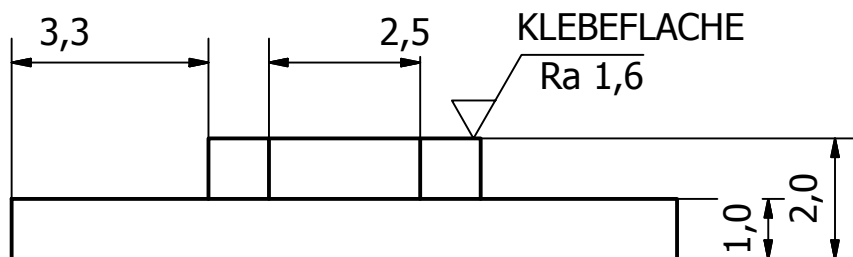
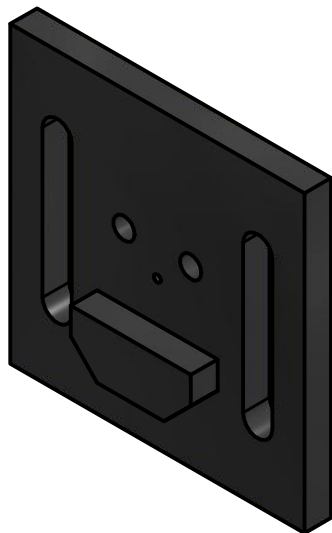
MATERIAL: TEFLON

SCALE 8:1

Designed by MICHAL KERN	Checked by	Approved by	Date	Date 15.4.2015	
INSTITUT FÜR PHYS. CHEMIE UNIVERSITÄT STUTTGART			FIBER FASTENER 2		
			INTERF. SAMPLE HOLDER	Edition	Sheet 4 / 9



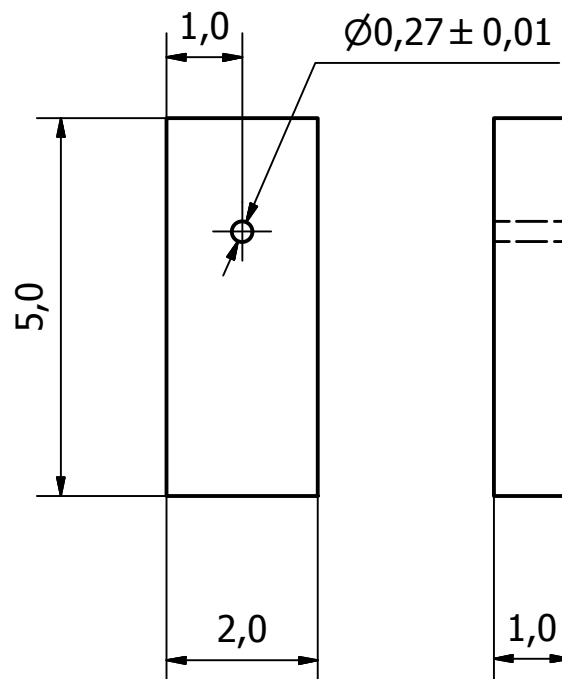
3	1	FIBER TIP HOLDER	7
2	1	PIEZOELECTRIC CRYSTAL	-
1	1	PIEZO HOLDER	6
ITEM	QTY	PART NUMBER	SHEET
Designed by MICHAL KERN	Checked by	Approved by	Date 15.4.2015
INSTITUT FÜR PHYS. CHEMIE UNIVERSITÄT STUTTGART		PIEZO HOLDER ASSEMBLY	
		INTERF. SAMPLE HOLDER	Edition Sheet 5 / 9



MATERIAL: VESPEL

SCALE 8:1

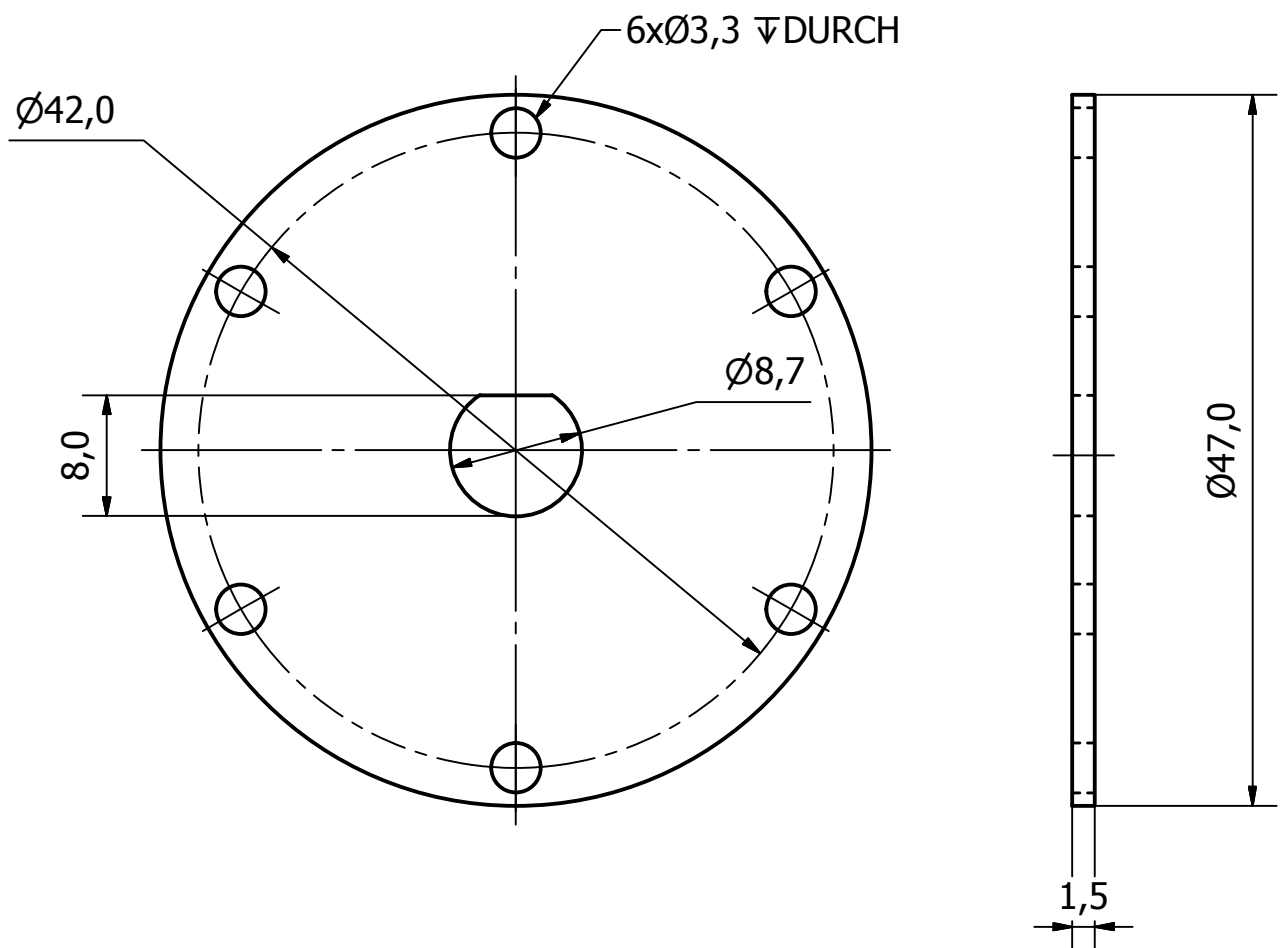
Designed by MICHAL KERN	Checked by	Approved by	Date	Date 15.4.2015	
INSTITUT FÜR PHYS. CHEMIE UNIVERSITÄT STUTTGART			PIEZO HOLDER		
			INTERF. SAMPLE HOLDER	Edition	Sheet 6 / 9



MATERIAL: VESPEL

SCALE 10:1

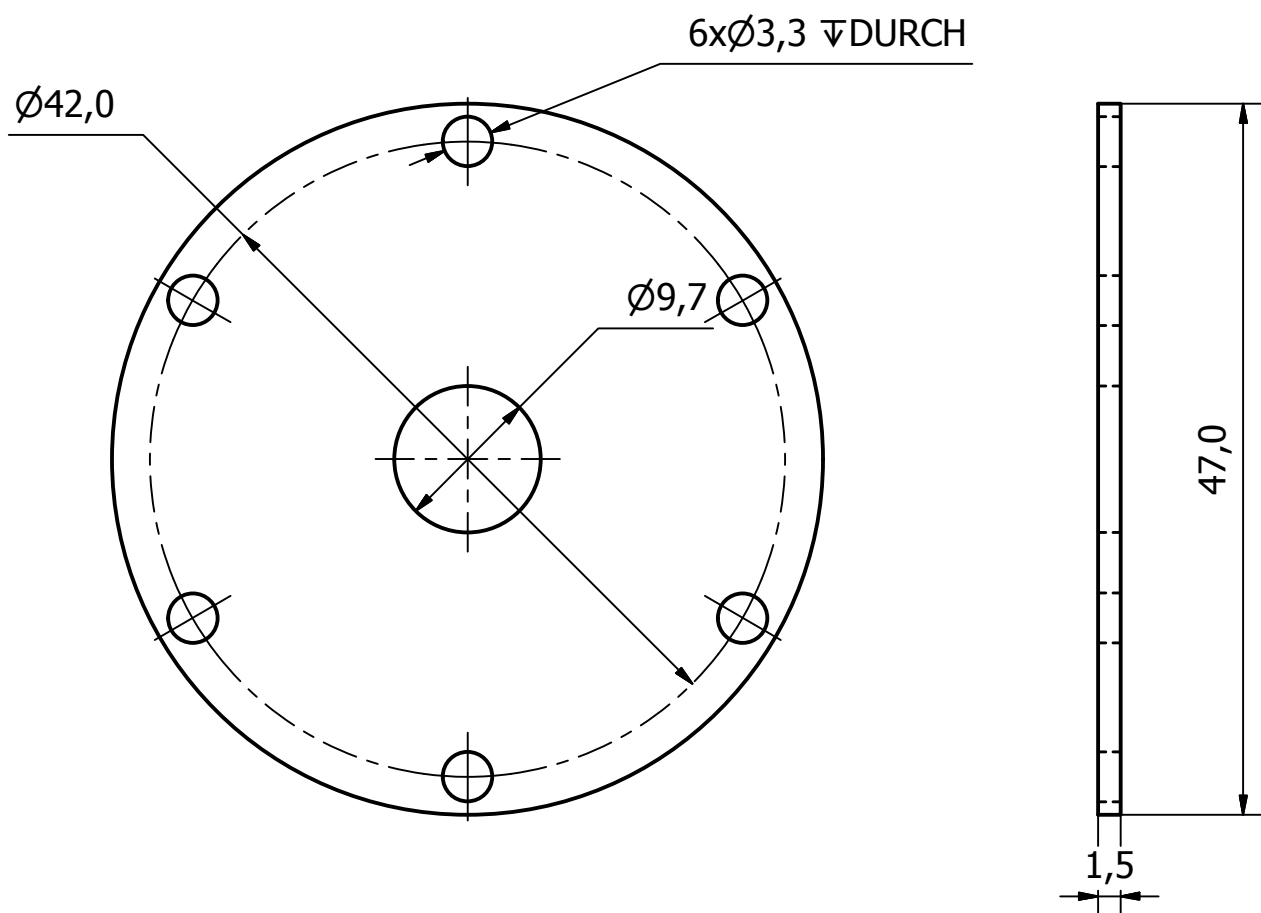
Designed by MICHAL KERN	Checked by	Approved by	Date		Date 15.4.2015	
INSTITUT FÜR PHYS. CHEMIE UNIVERSITÄT STUTTGART			FIBER TIP HOLDER			
			INTERF. SAMPLE HOLDER		Edition	Sheet 7 / 9



MATERIAL: MESSING

SCALE 2:1

Designed by MICHAL KERN	Checked by	Approved by	Date	Date 15.4.2015	
INSTITUT FÜR PHYS. CHEMIE UNIVERSITÄT STUTTGART			ADAFc1 FEEDTHROUGH		
			INTERF. SAMPLE HOLDER	Edition	Sheet 8 / 9



MATERIAL: MESSING

SCALE 2:1

Designed by MICHAL KERN	Checked by	Approved by	Date		Date 15.4.2015	
INSTITUT FÜR PHYS. CHEMIE UNIVERSITÄT STUTTGART			BNC FEEDTHROUGH			
			INTERF. SAMPLE HOLDER		Edition	Sheet 9 / 9