

GENERAL NOTES:

FOR ORDER A11-42000, 1 ASSEMBLY TO BE MADE
TOTAL MASS DRAWN ITEMS APPROX. 8 kg
BREAK ALL SHARP EDGES
ITEM NUMBERS: 01-05

NO. FOR 1 ASSY + WEIGHT	DESCRIPTION AND SIZE
01	
NUMBER FOR ORDER	A MATERIAL AND REMARKS

A	MRP	A.F.C.				
	02-05-'13					
Rev.	Drawn	Description				
	Date			Proj.	Bas.	Stru. Det.
				Hydr.		Elect.

Issued for:

Proj. method	Scale :	Copy Date :
	1:2.5	21-05-2013

Notation	According	Tolerances	According
Dimensions	ISO 406	Welding	ISO 13920-AE
Geometrics	ISO 1101	Cutting	DIN 2310-IA,IC,JK
Roughness	ISO 3002	Machining	ISO 2768-mK
		Plate Thickness	EN 10029
		Castings	ISO 8062-CT11

Client :

Huisman Konstruke, s.r.o.

Project :

LS

Title:

MODIFIKAČE LISU

VYRABENE POLOZKY

Huisman

Huisman Equipment b.v.
Admiraal Trompsstraat 2
3115 HH Schiedam, The Netherlands
Telephone : +31(0)10 245 22 22
Telefax : +31(0)10 245 22 20

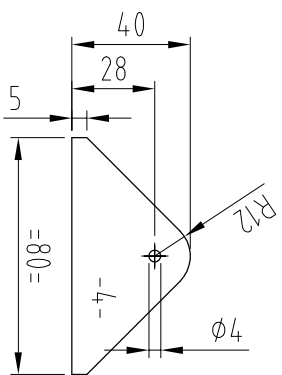
= Huisman Equipment B.V. =

PROPRIETARY INFORMATION

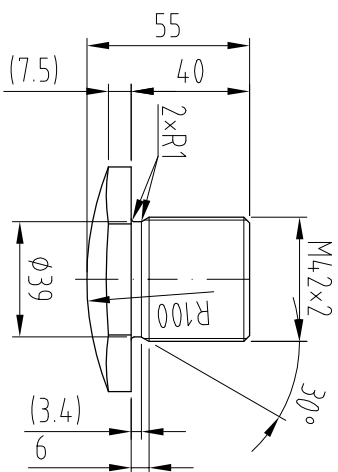
Reproduction, distribution or disclosure of this document is prohibited without the prior written consent of Huisman's management. Receiver shall treat this document as confidential.

COPYRIGHT RESERVED BY LAW

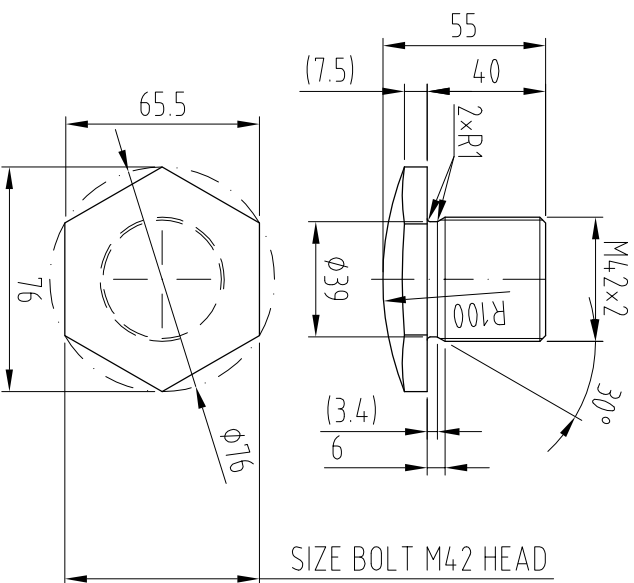
Format	Order No.	Drawing No.	Rev.
A3	A11-42000	A11-42000-00-004	A



2x 0.1 kg	03	PLATE 4x40x80
2x in TOTAL	A	St52-3N



1x 2 kg 04 ROD Ø76x55
1x in TOTAL A 30CrNiMo8

$$\Delta_{3.2} +$$


Technical drawing of a circular hole. The hole has a diameter of 35 mm, indicated by the dimension line and the text $\varnothing 35$. The depth of the hole is 25 mm, indicated by the dimension line and the text 25. The drawing shows the circular profile of the hole and the depth of the hole.

1x 1kg 05 PLATE 35x267x267
1x in TOTAL A St52-3N

SCALE 1:10