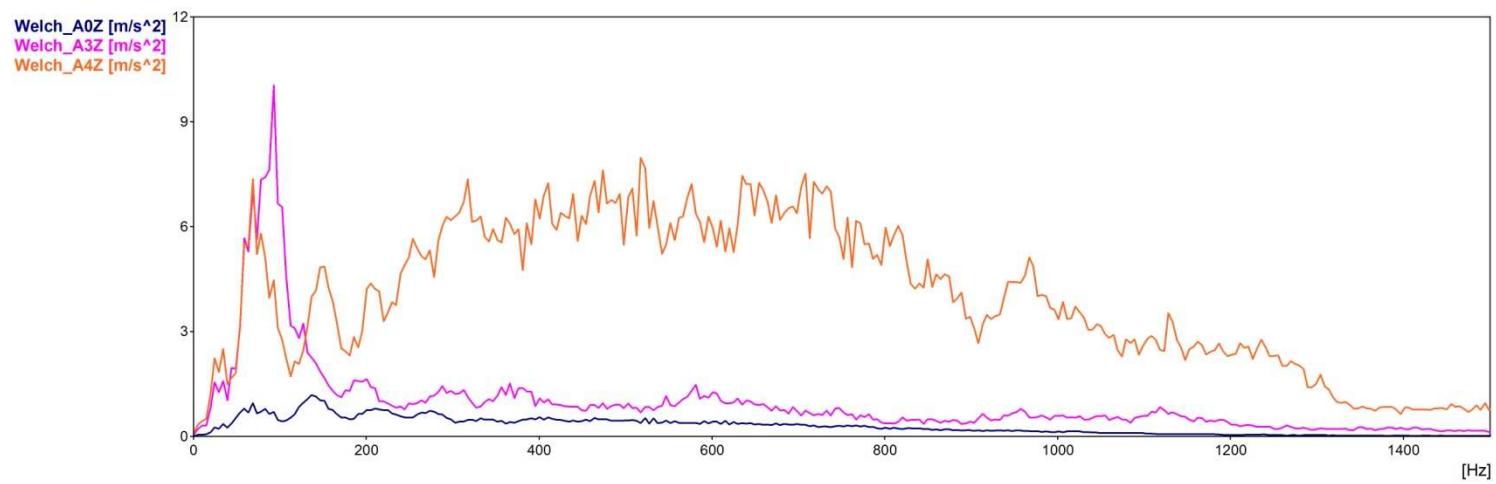
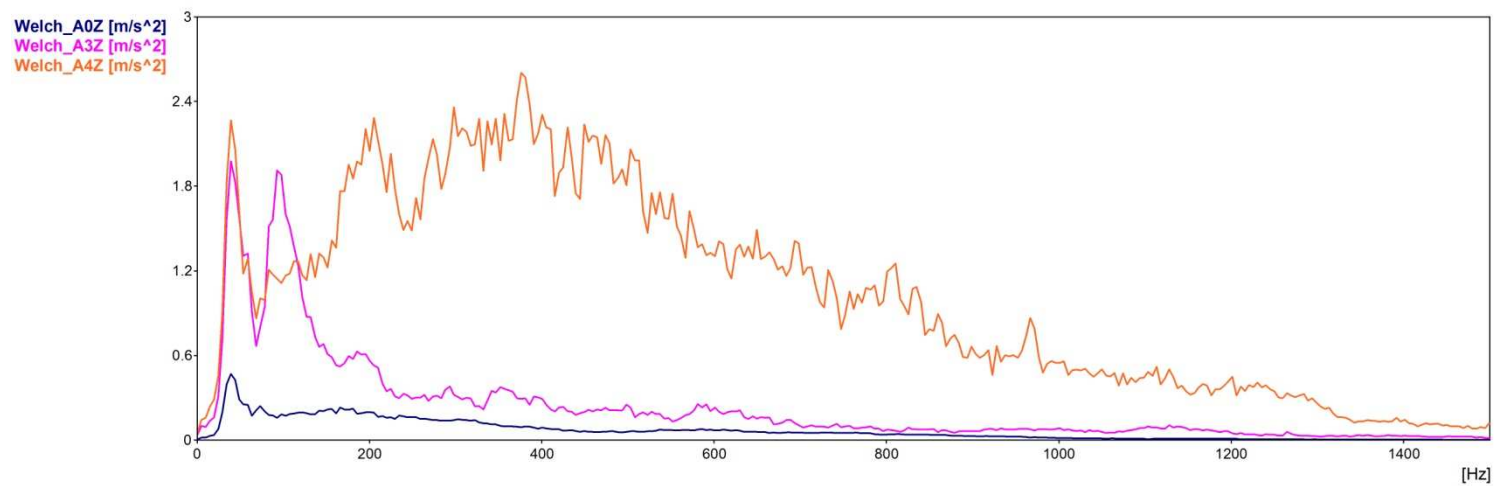


PŘÍLOHA H

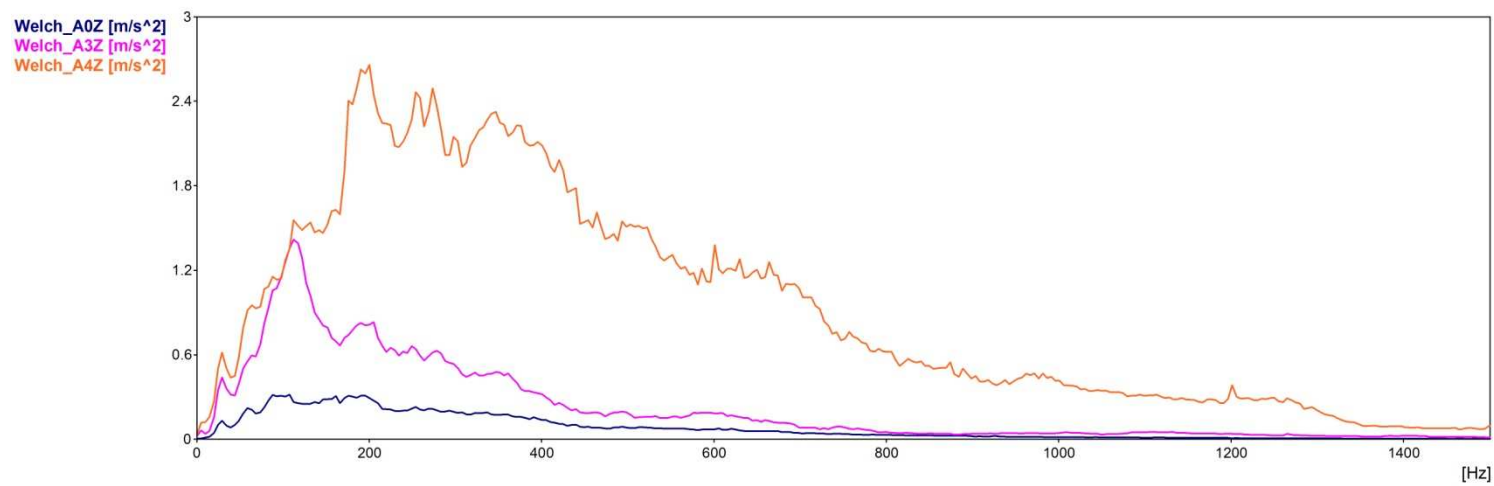
Analýza vibrací ve frekvenční oblasti – Welchova metoda na výhybce č. 59



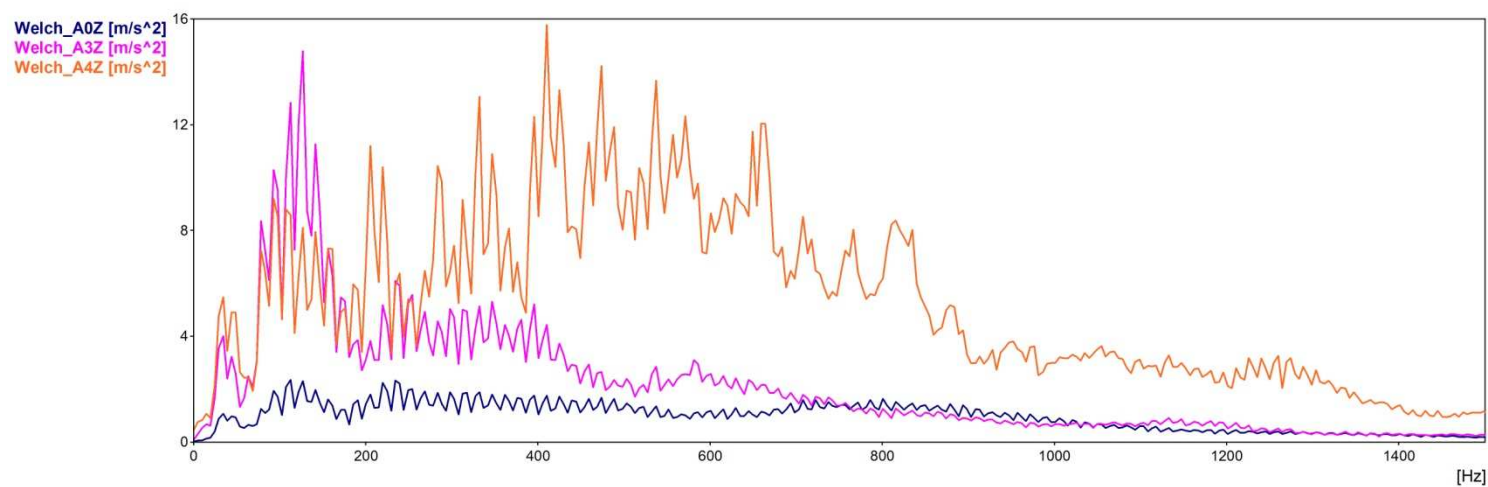
4. Loko 362 – 94 km/h



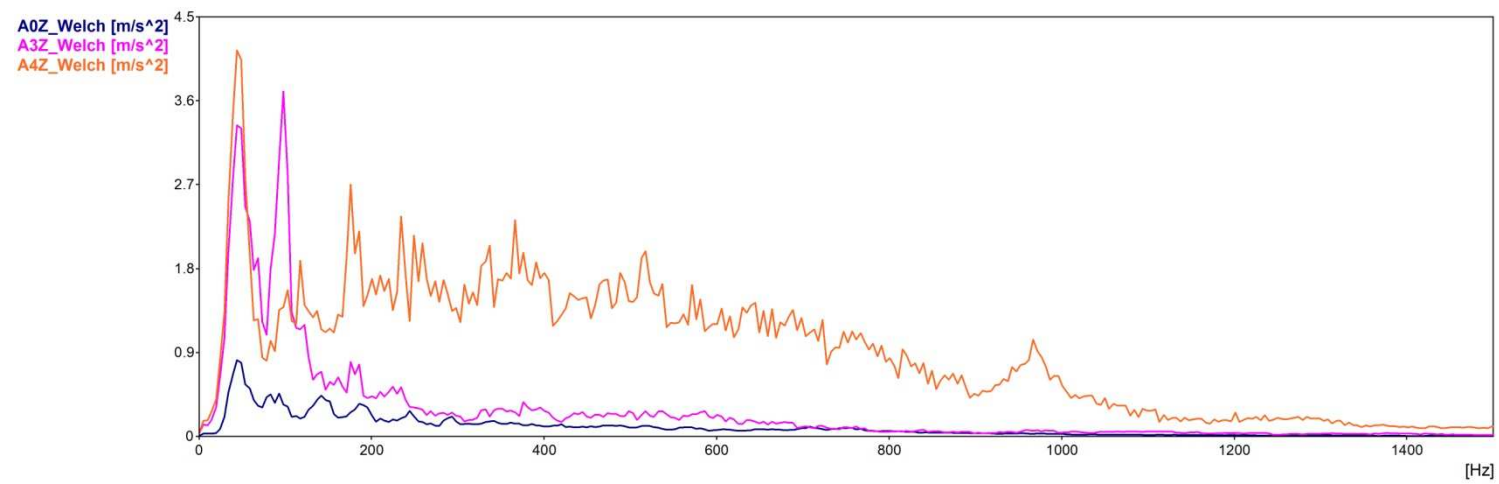
5. Loko 163 – 51 km/h



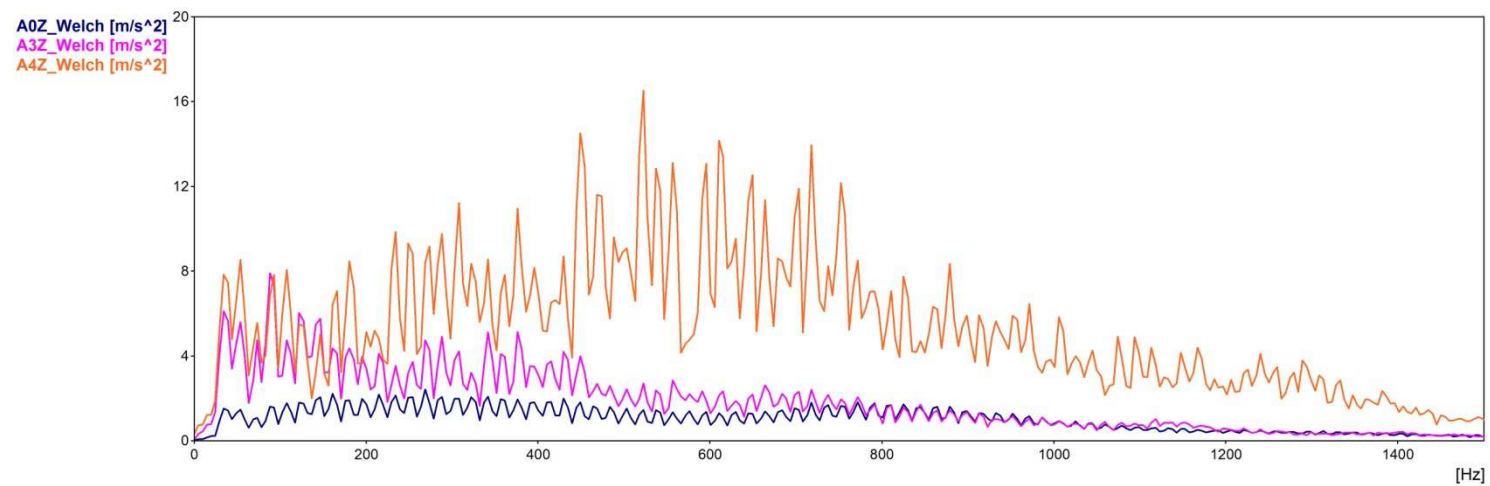
6. Loko 242 náklad – 33 km/h



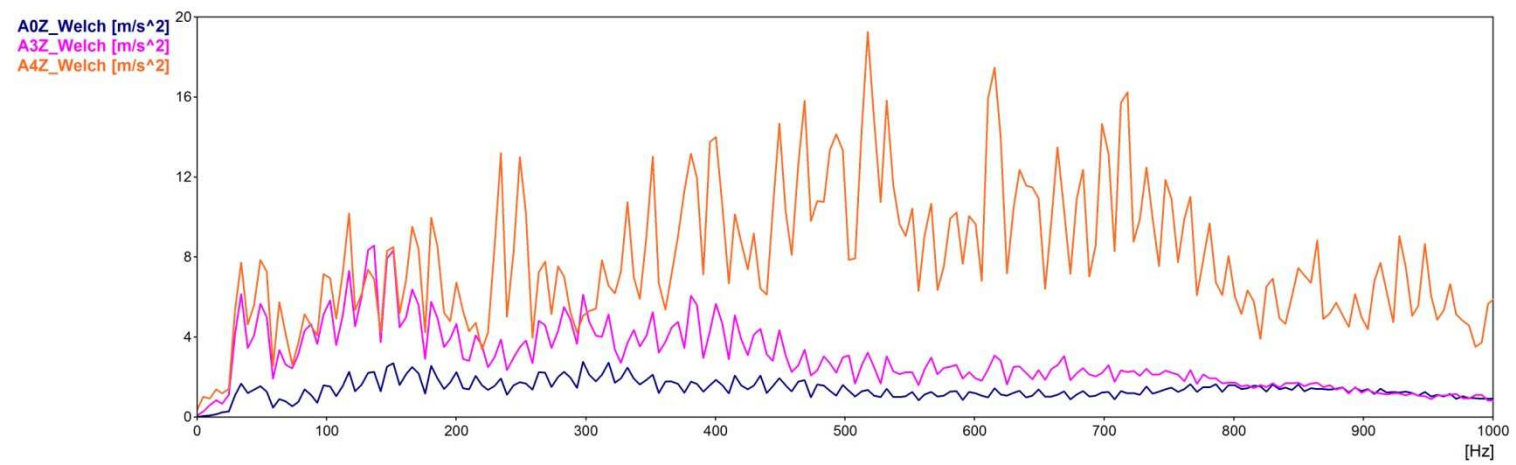
7. 182 Taurus – 140 km/h



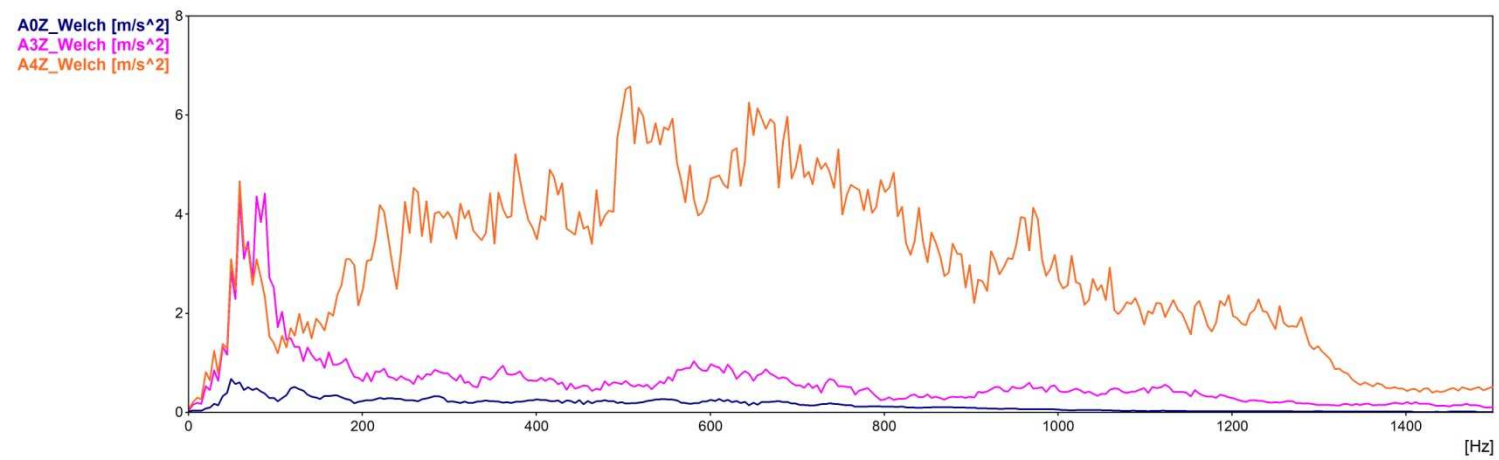
8. 471 City Elephant – 72 km/h



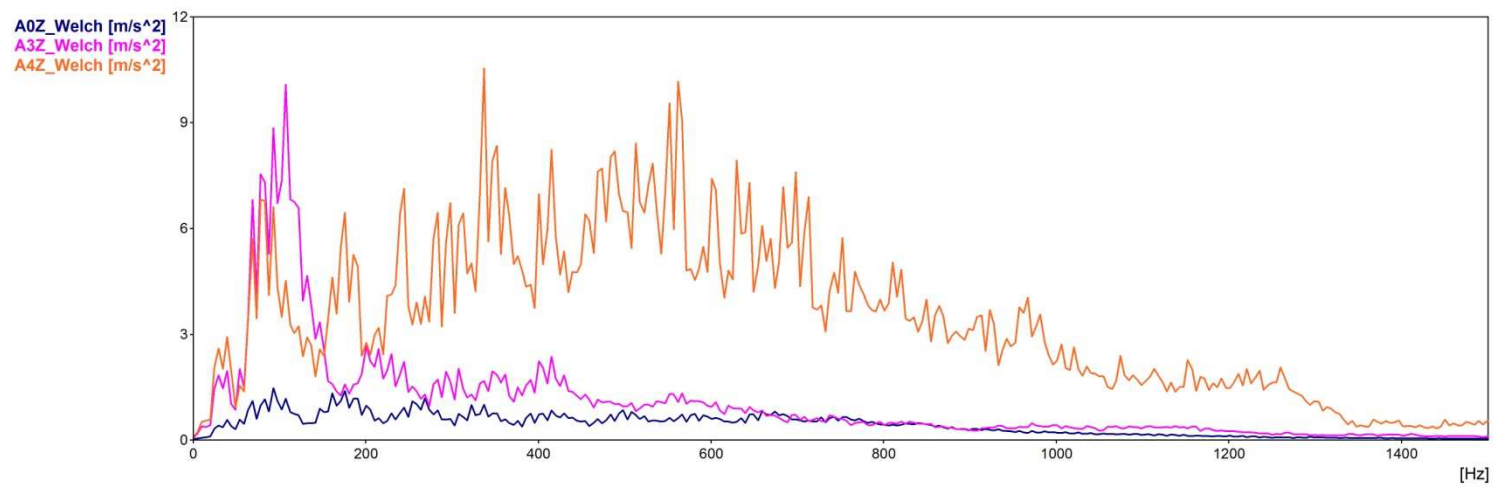
9. Loko 380 – 161 km/h



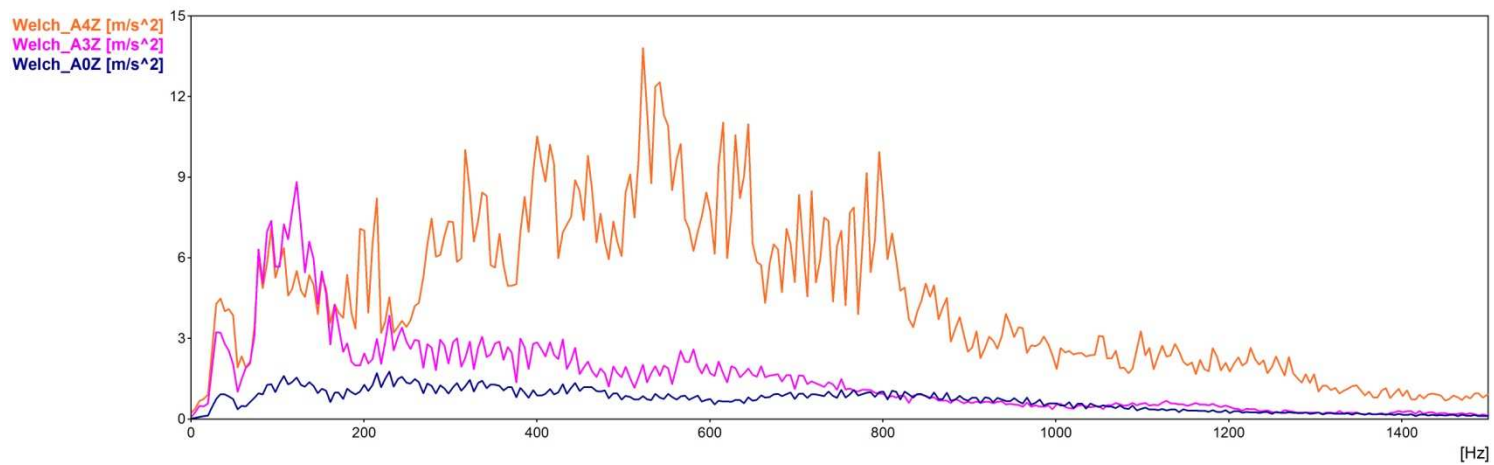
10. 680 Pendolino – 163 km/h



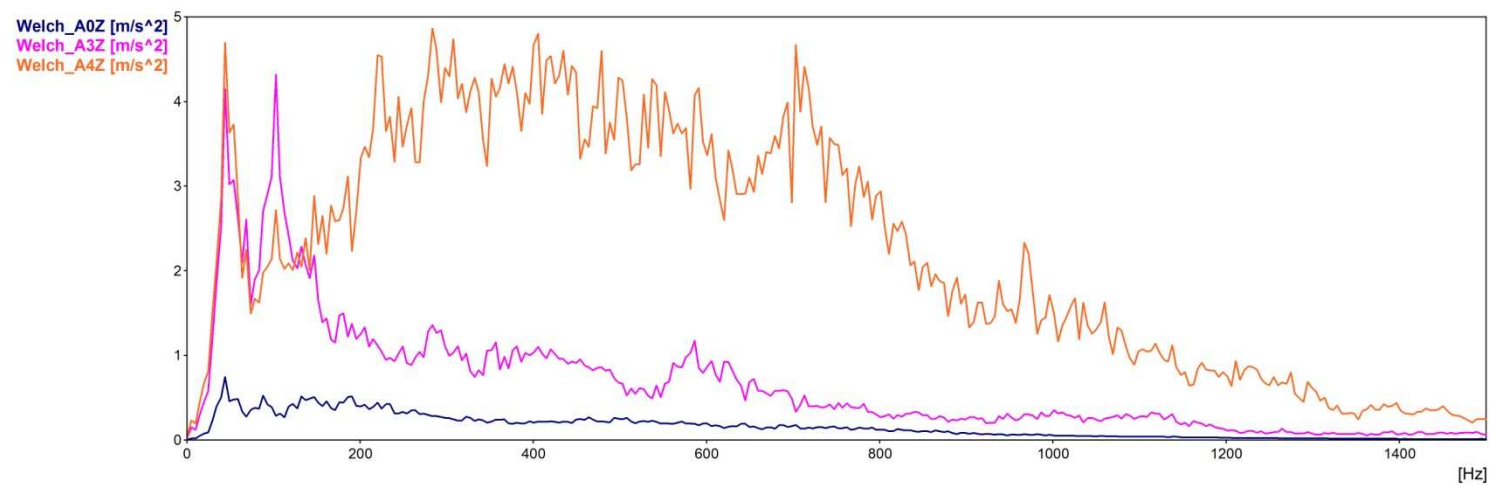
11. Loko 150 – 83 km/h



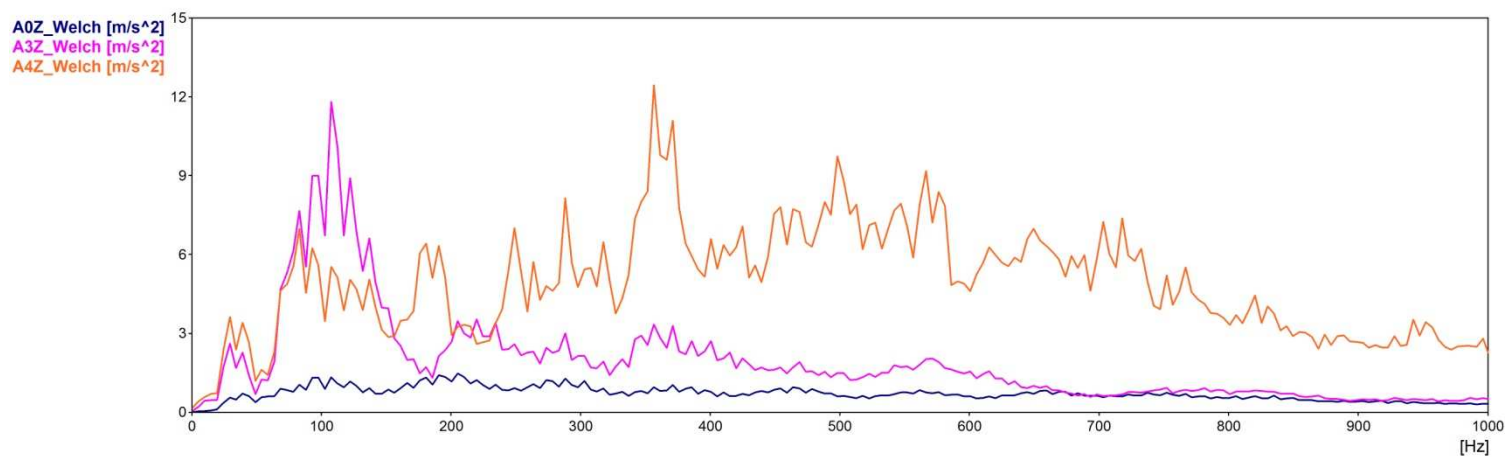
12. Loko 380 – 120 km/h



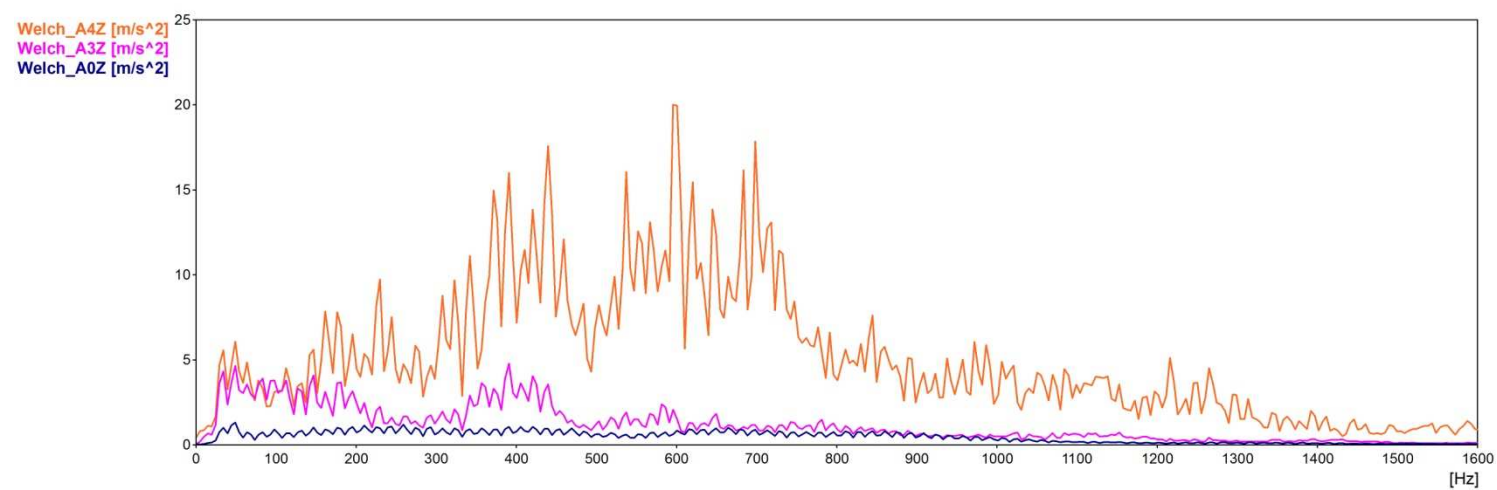
13. 163 Regio Jet – 139 km/h



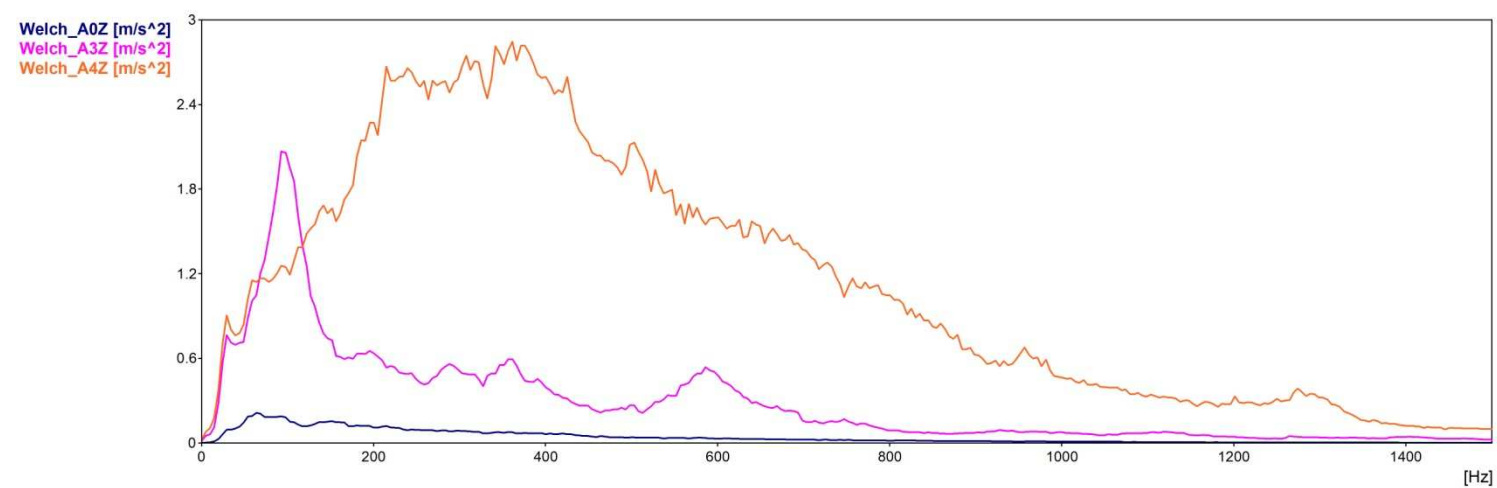
14. PKP EM57 – 67 km/h



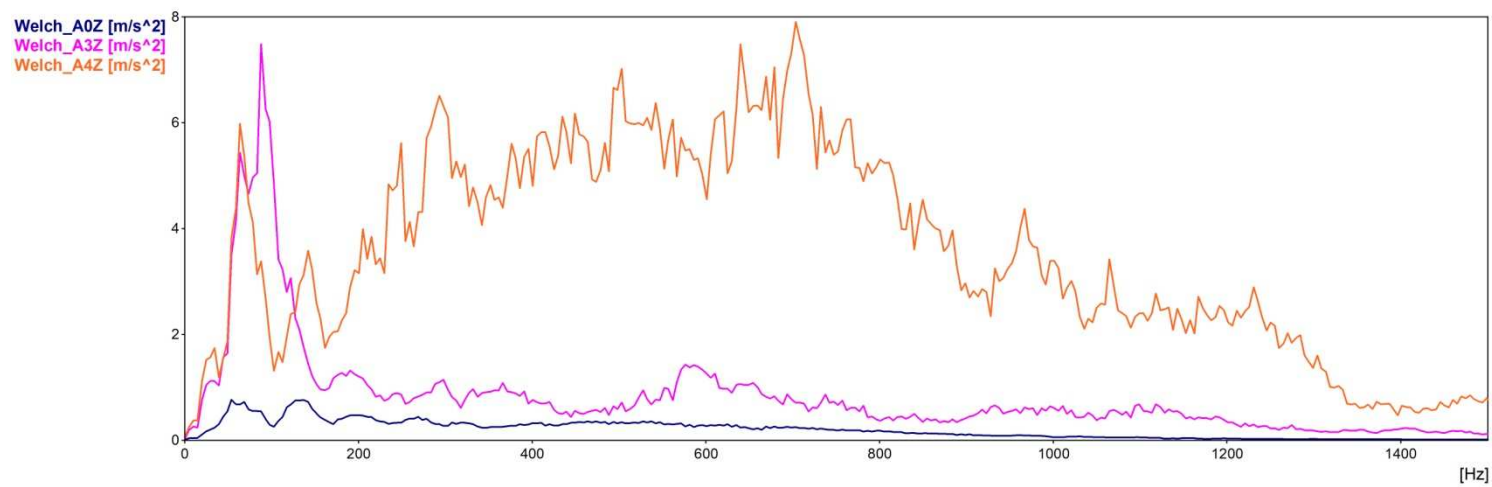
15. Loko 151 - 120 km/h



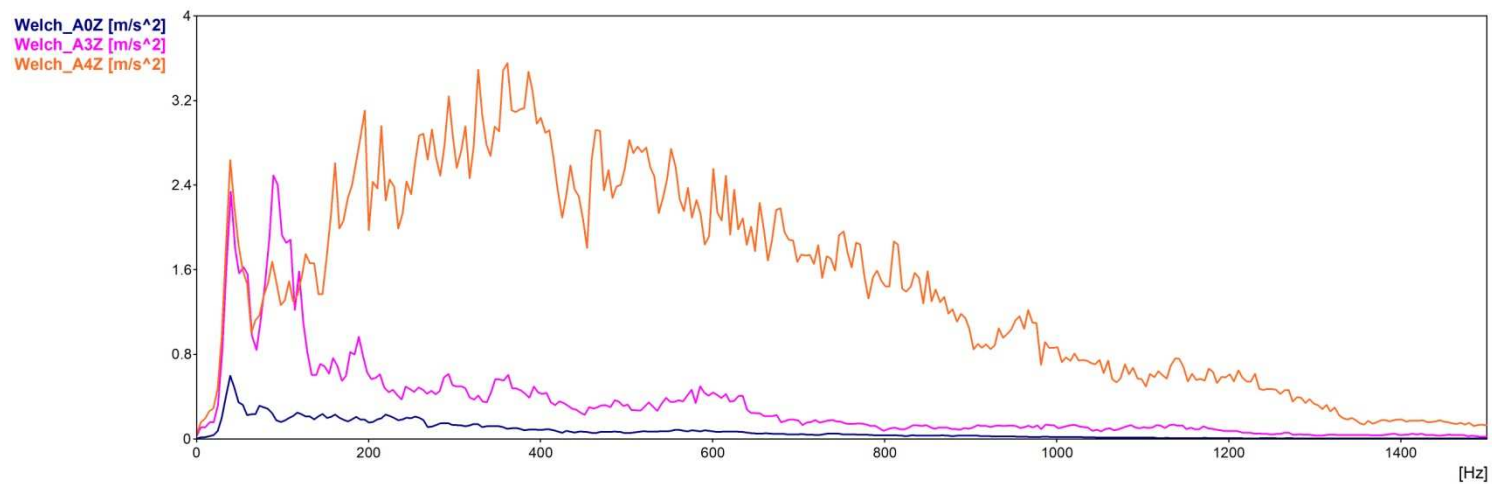
16. Leo Express – 156 km/h



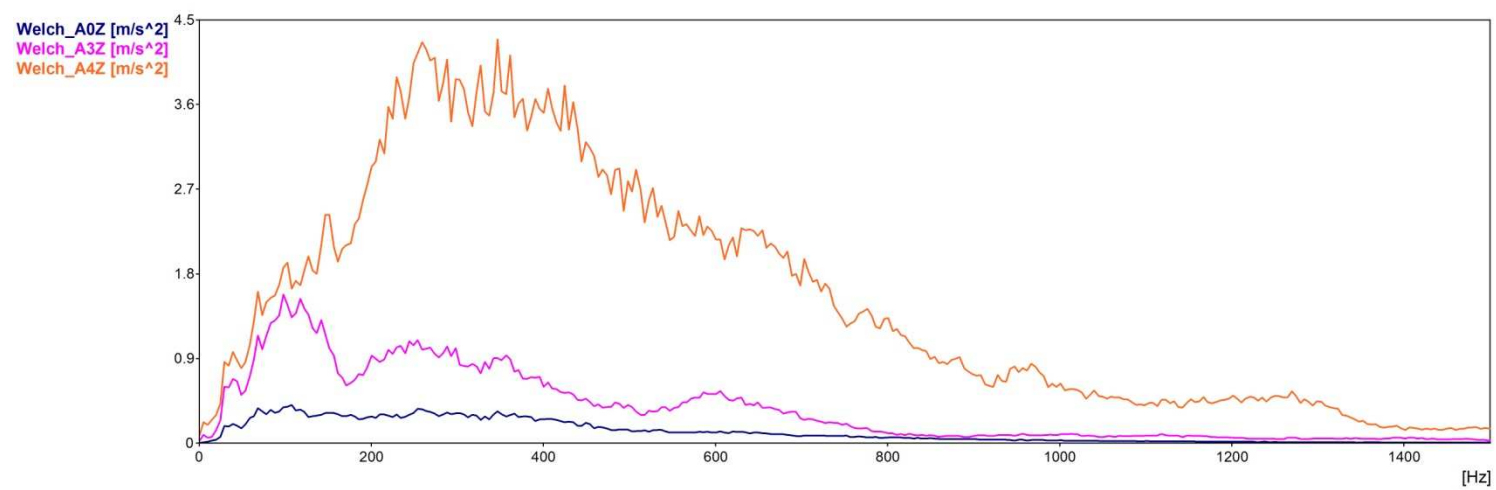
17. Loko 242 náklad – 33 km/h



18. Loko 362 – 88 km/h



19. Loko 163 Os – 61 km/h



20. Loko 363 – náklad 40 km/h