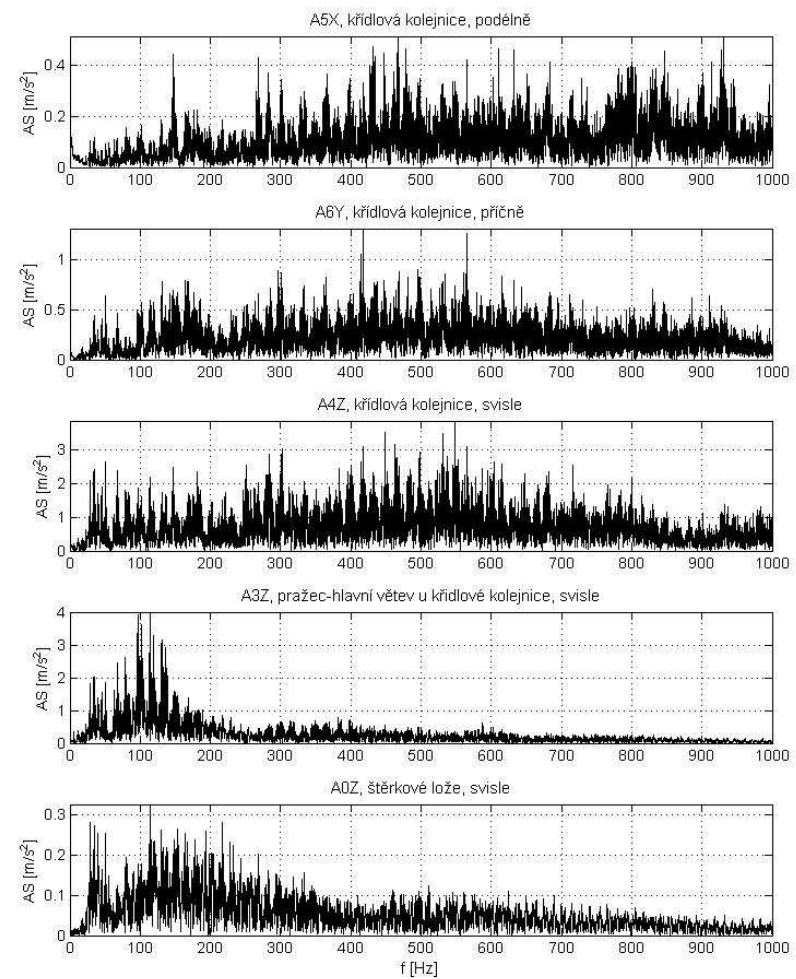
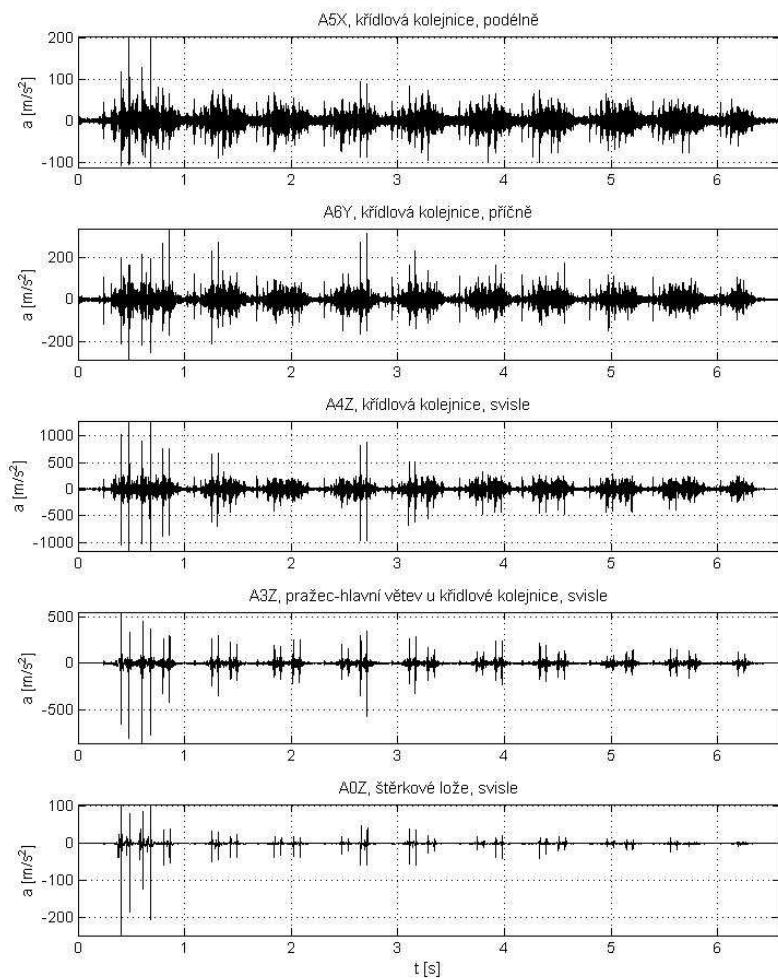


PŘÍLOHA G

Analýza zrychlení vibrací na výhybce č. 63

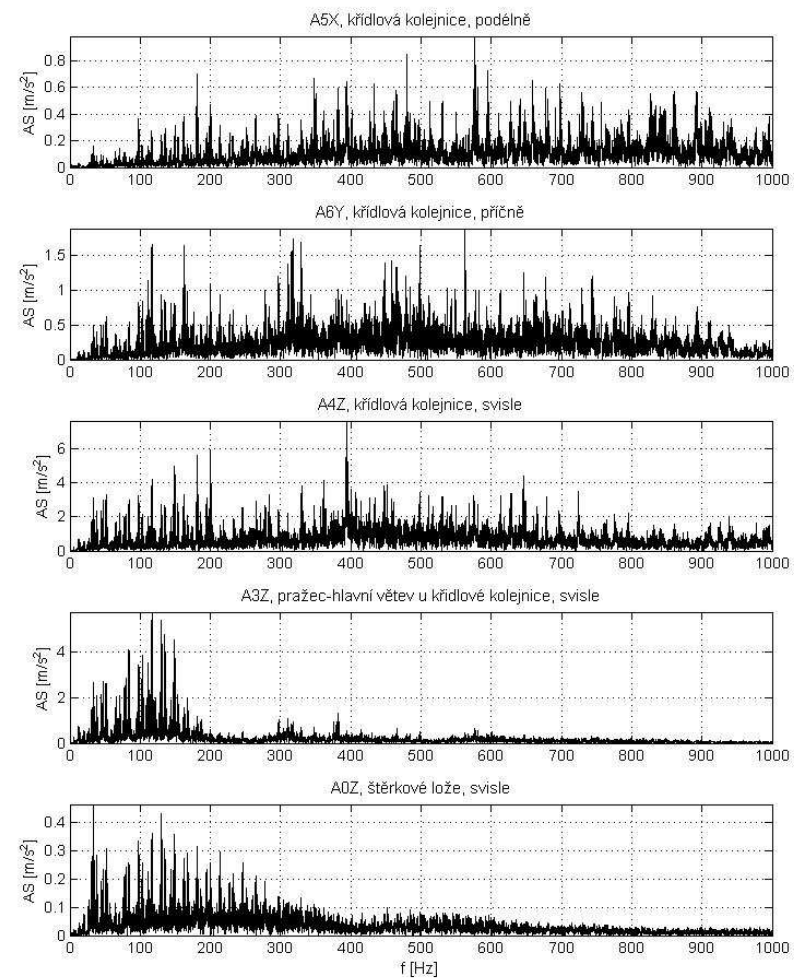
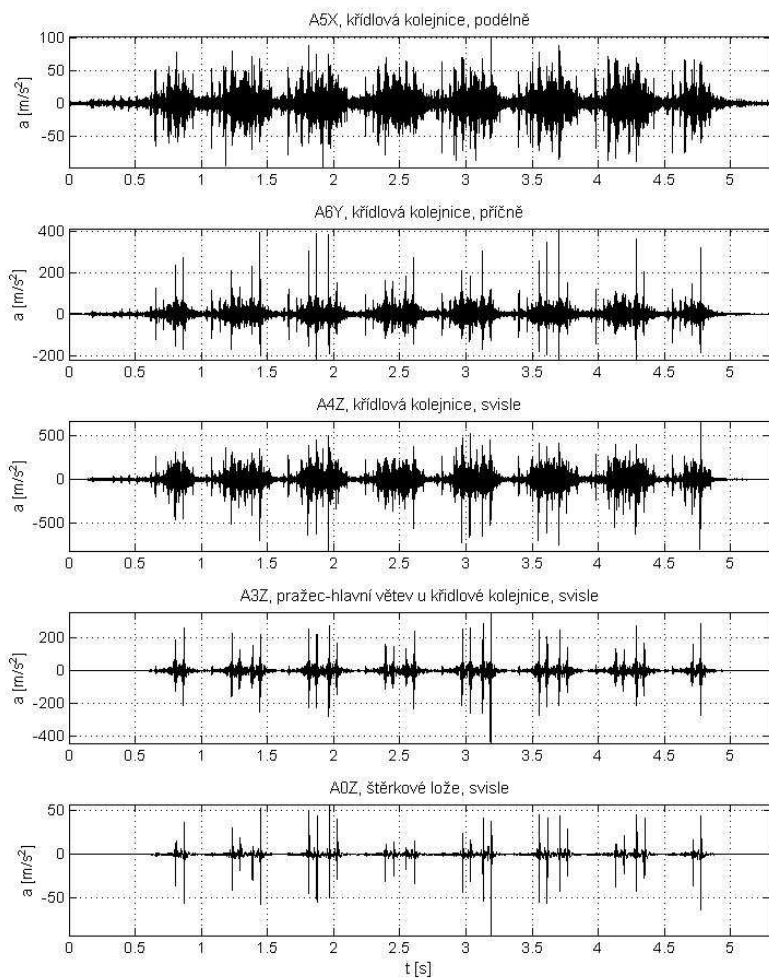
1. Loko 151 – 151 km/h

D:\Sadlekova\63_nove\1_Vlak_2013_04_08_104234.txt



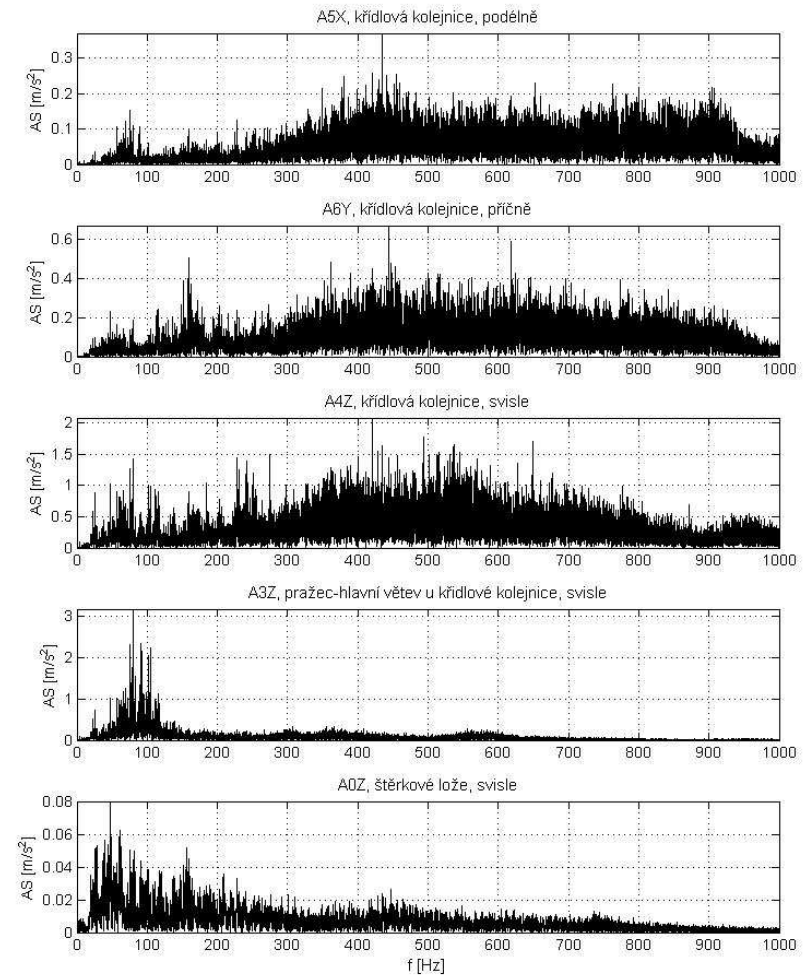
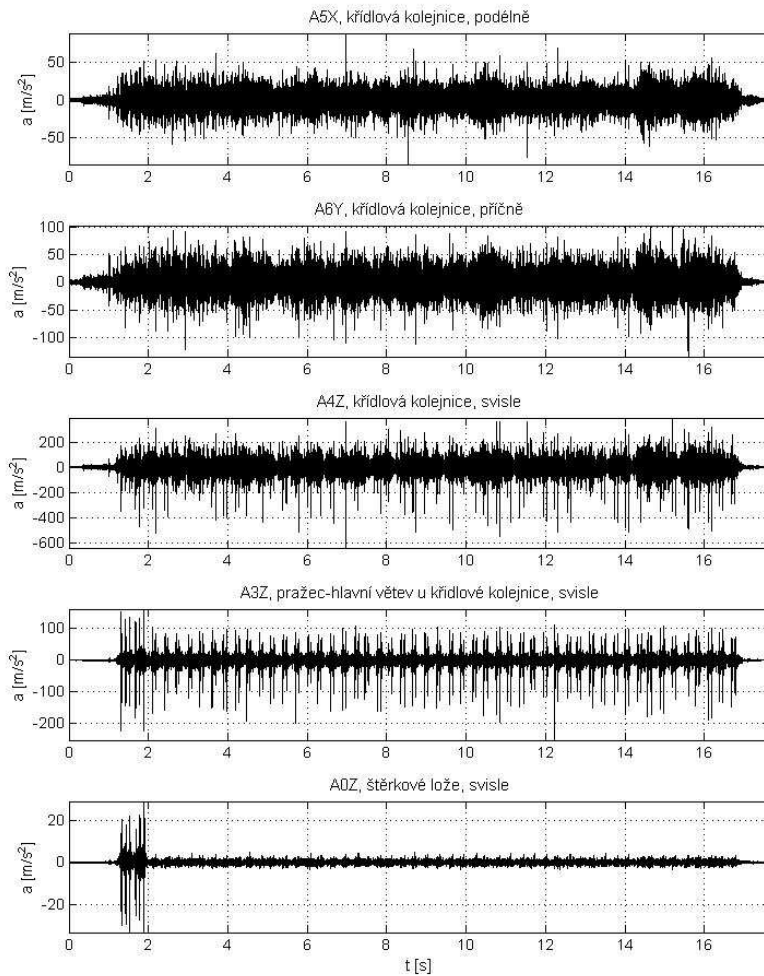
2. 680 Pendolino – 160 km/h

D:\Sadleková\63_nove\2_Vlak_2013_04_08_104636.txt



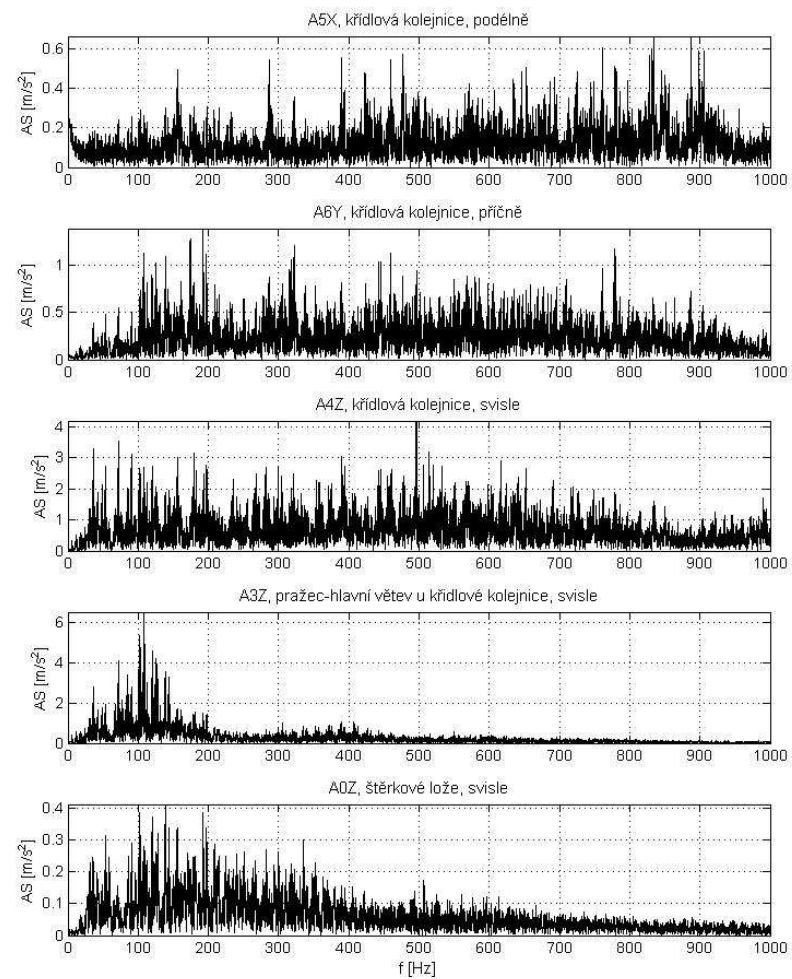
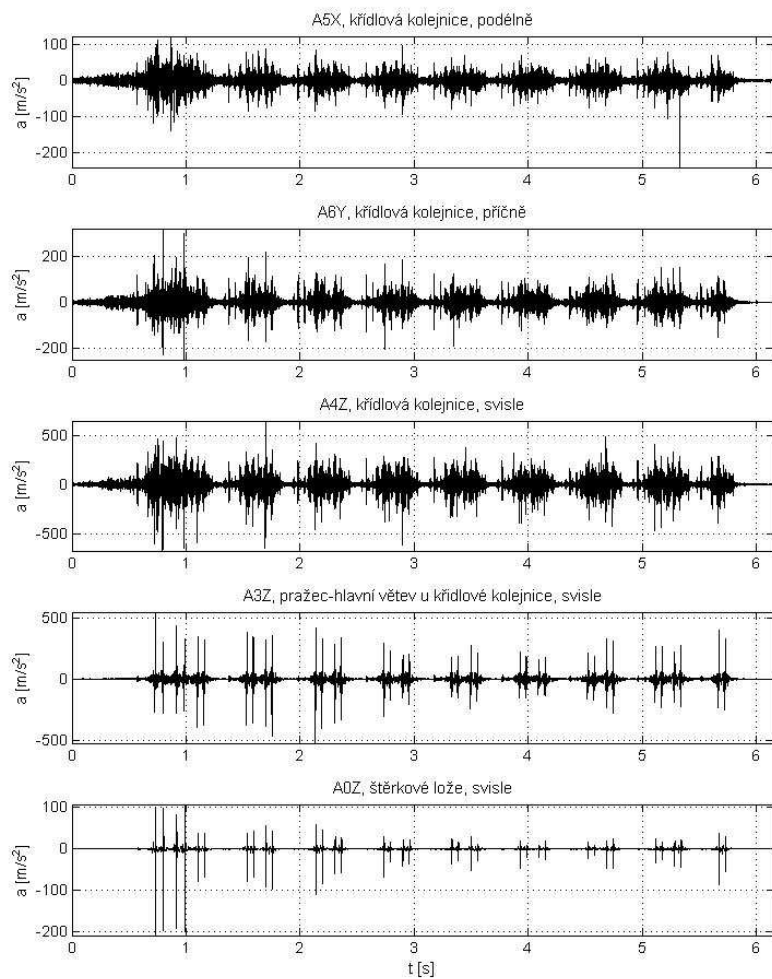
3. Loko 181 náklad – 80 km/h

D:\Sadleková\63_nove\3_Vlak_2013_04_08_105358.txt



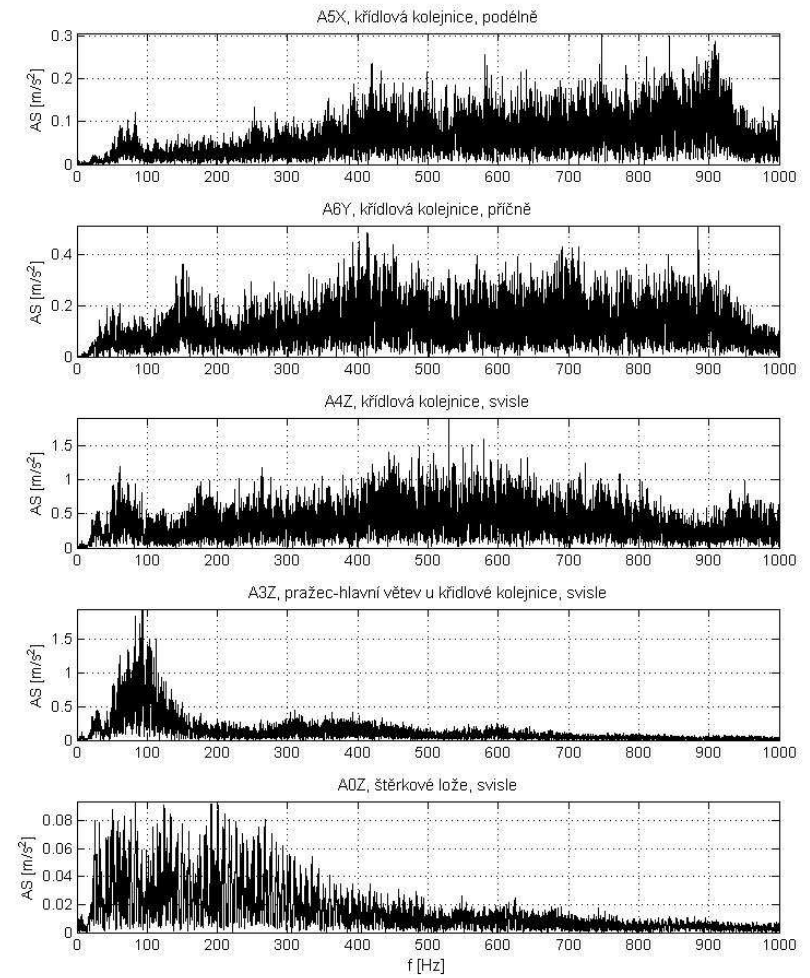
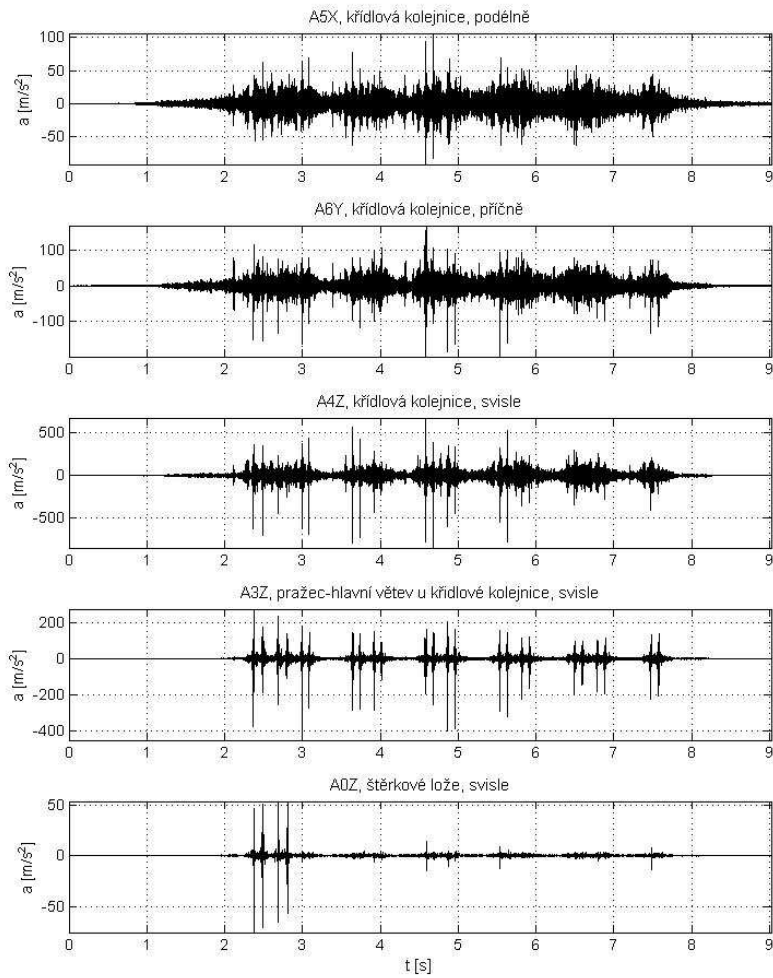
4. Loko 350 – 150 km/h

D:\Sadleková\63_nove4_Vlak_2013_04_08_110704.txt



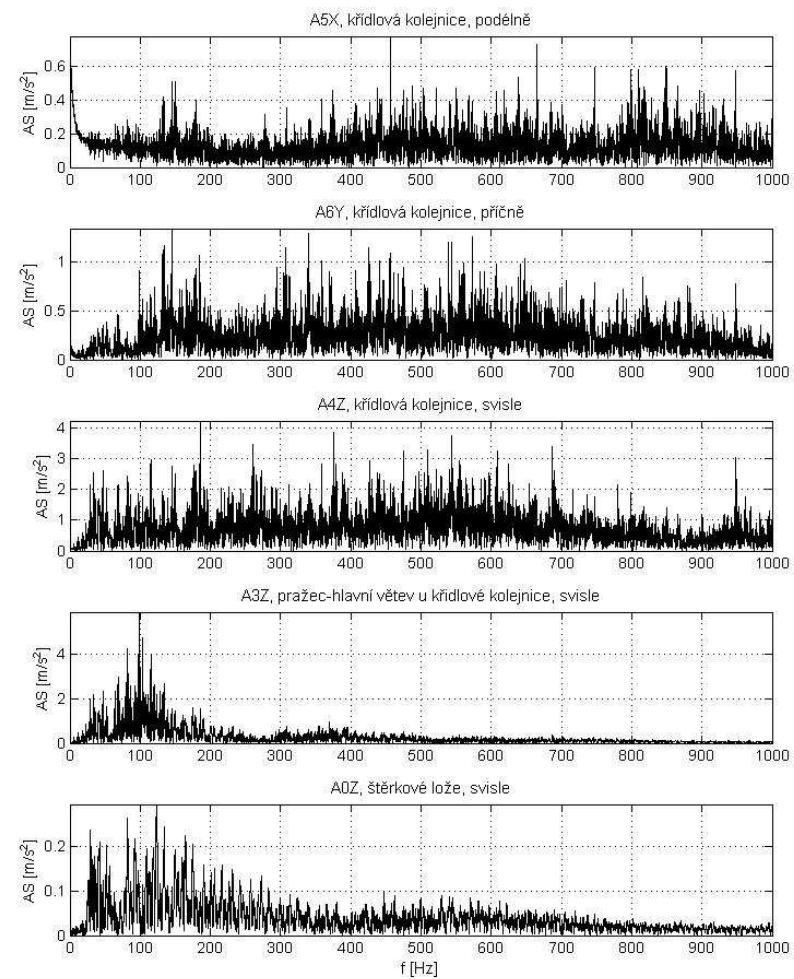
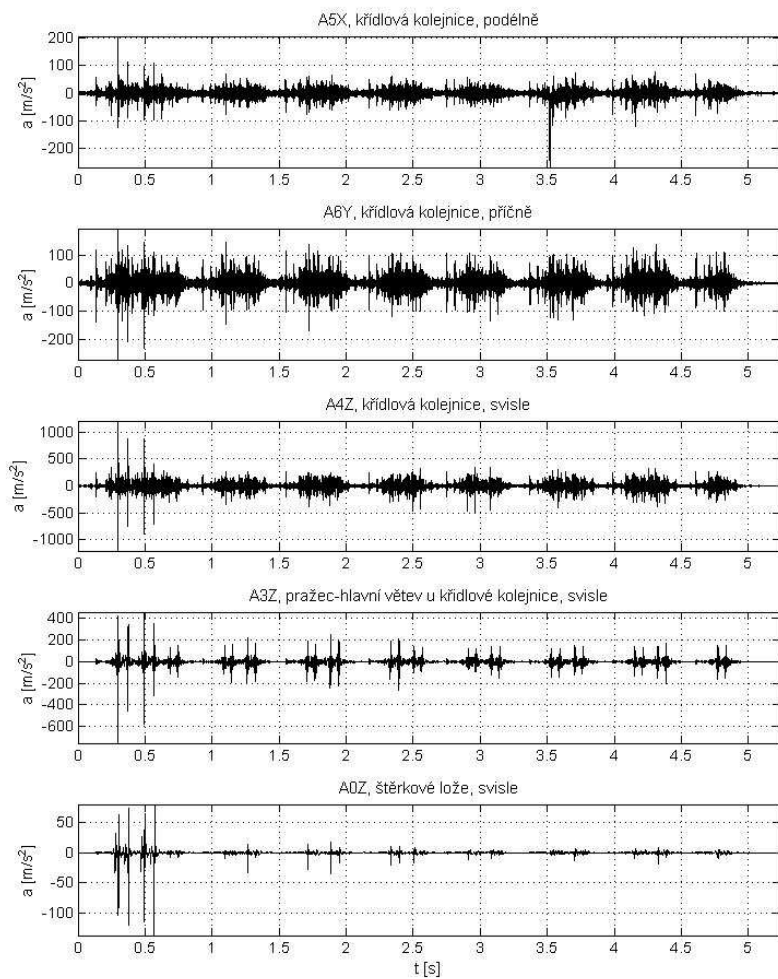
5. Loko 363 – 90 km/h

D:\Sadlekova\63_nove\5_Vlak_2013_04_08_112246.txt



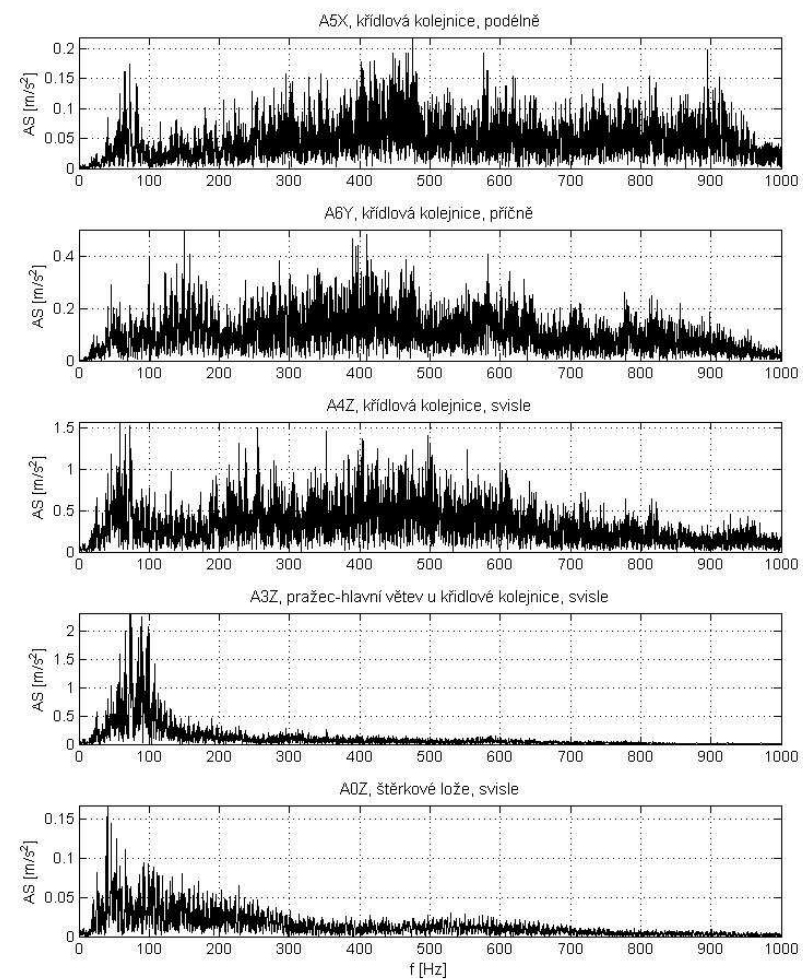
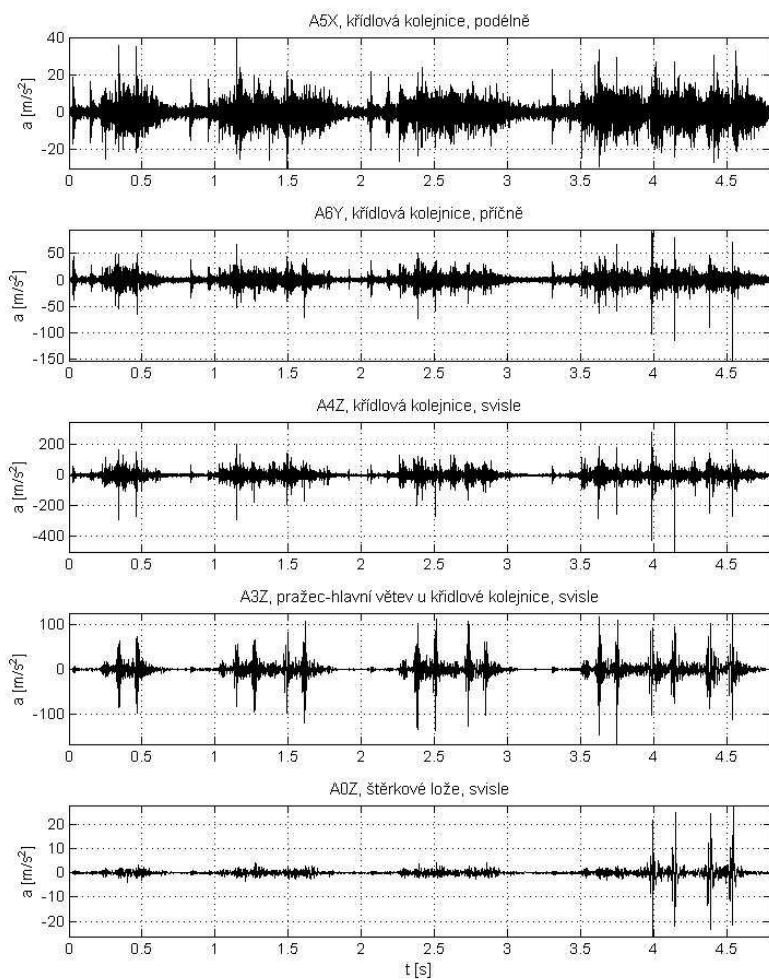
6. Loko 151 – 152 km/h

D:\Sadleková\63_nove\6_Vlak_2013_04_08_114134.txt



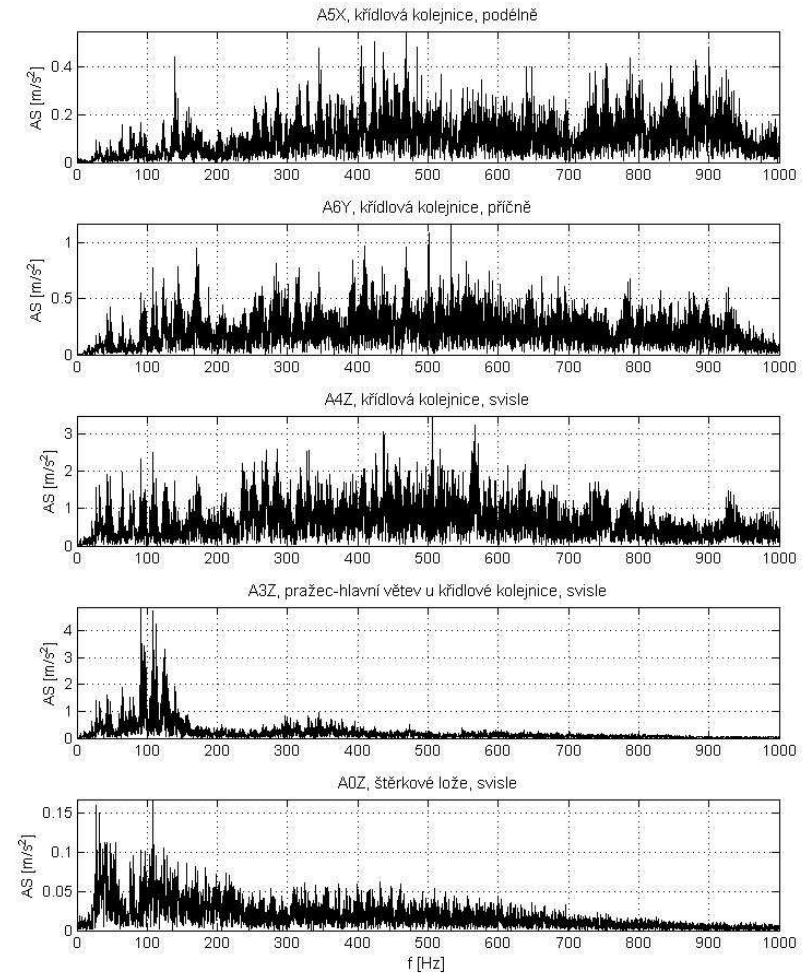
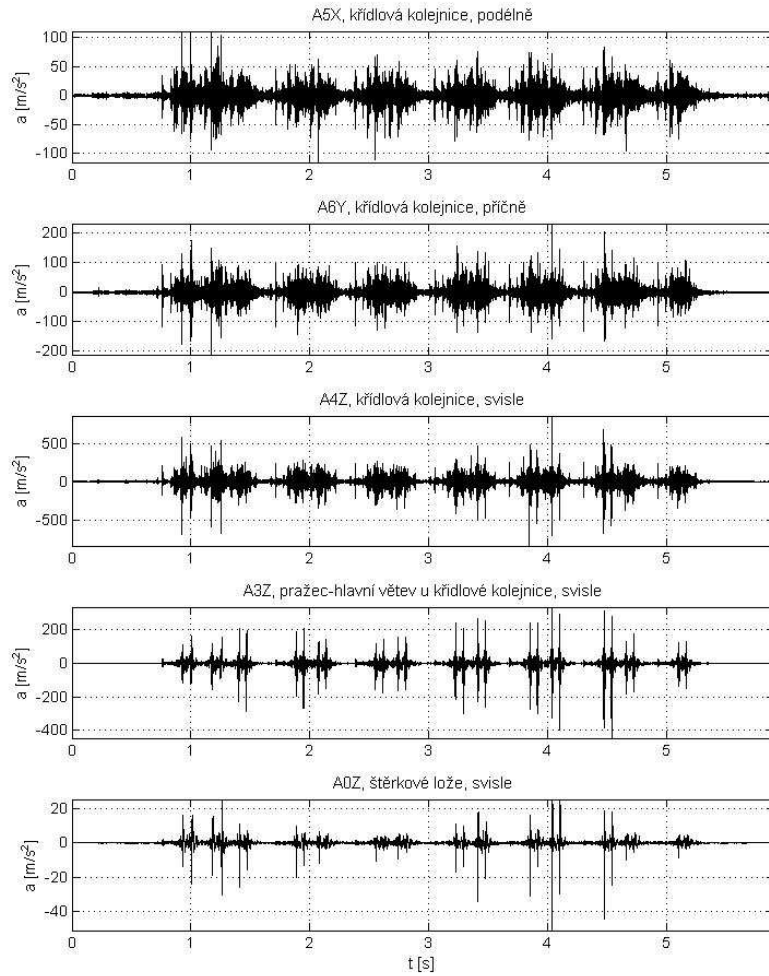
7. Ř.V. 80 + 163 – 80 km/h

D:\Sadleková\63_nove\7_Vlak_2013_04_08_115011.txt



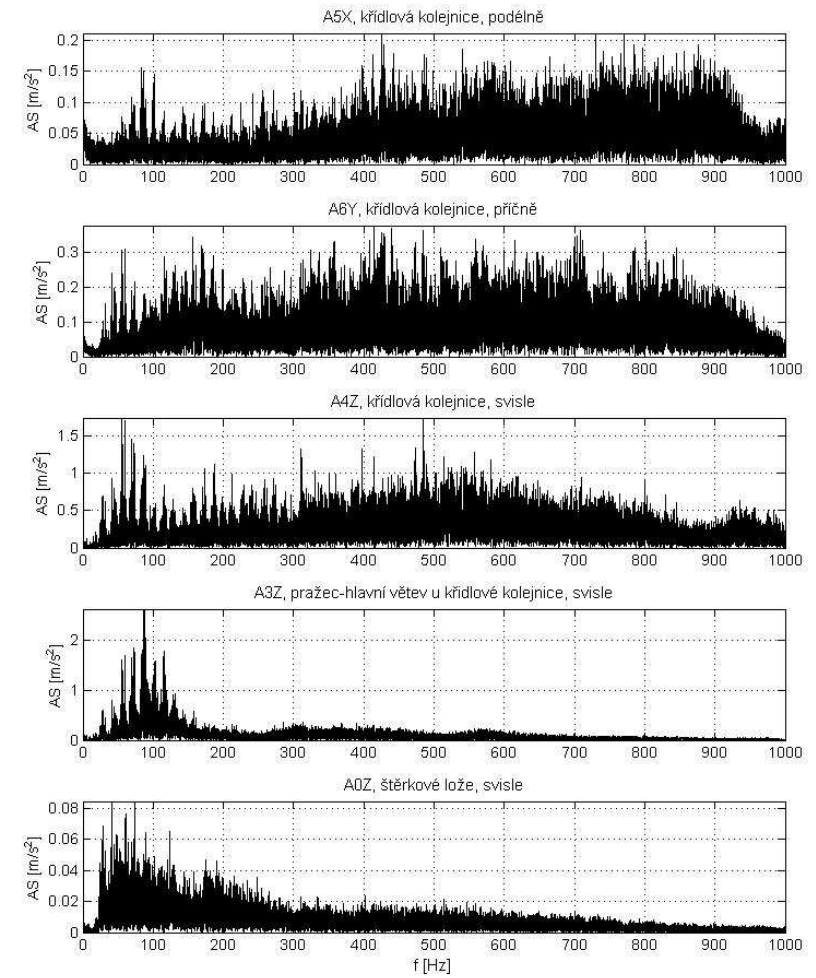
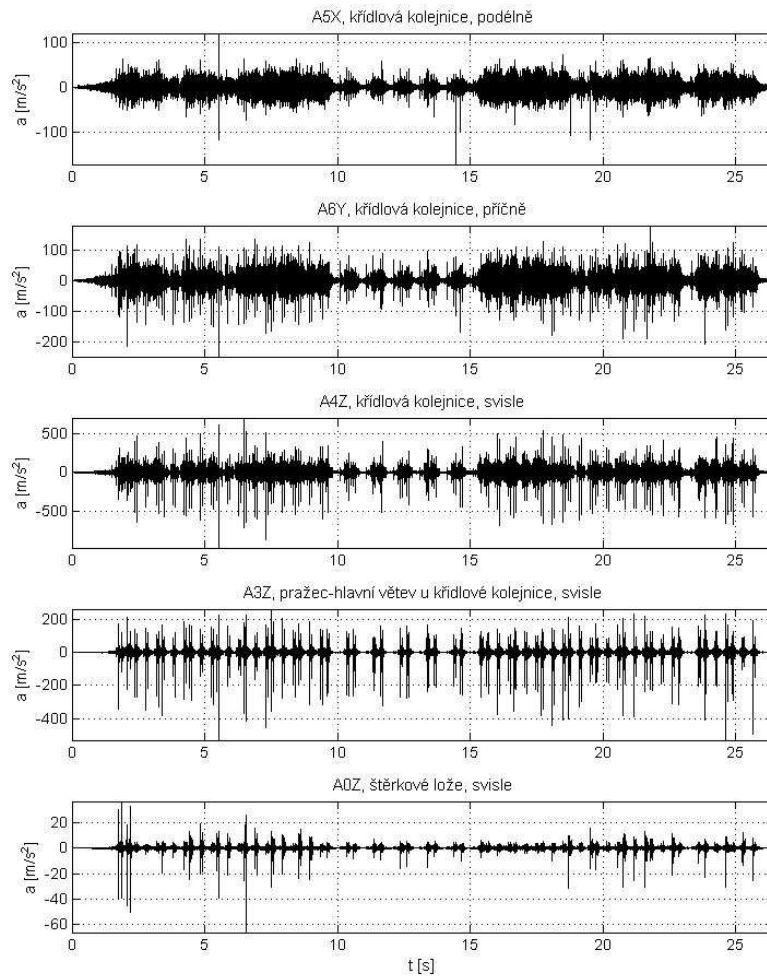
8. 182 Taurus – 145 km/h

D:\Sadleková\63_nove\8_Vlak_2013_04_08_115900.txt



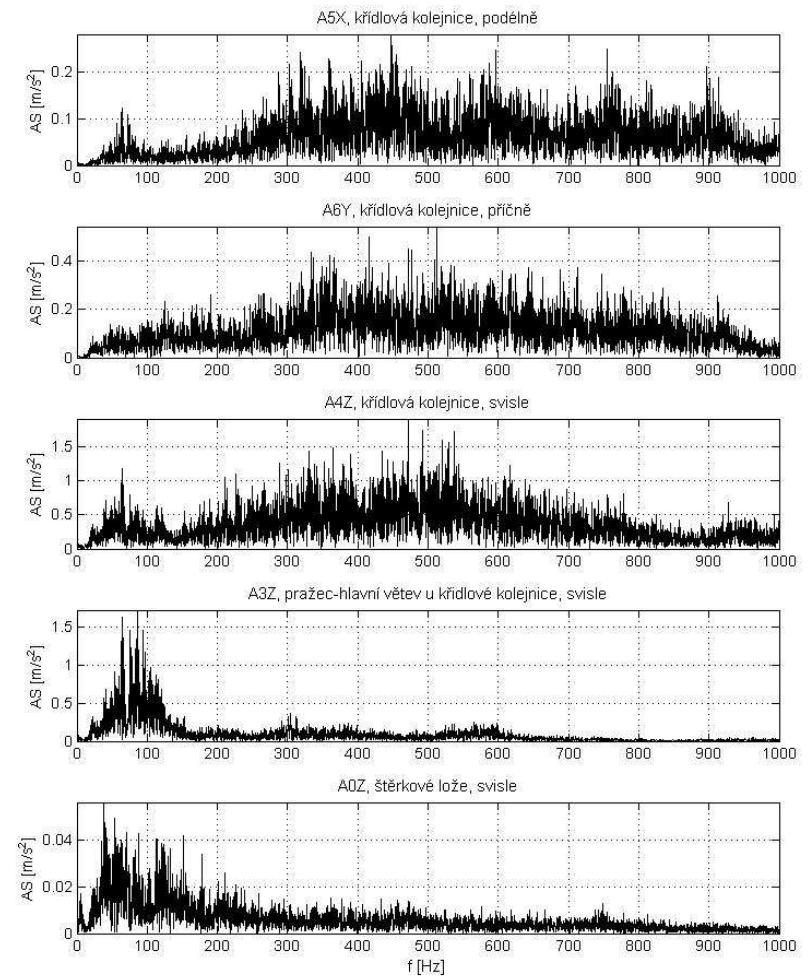
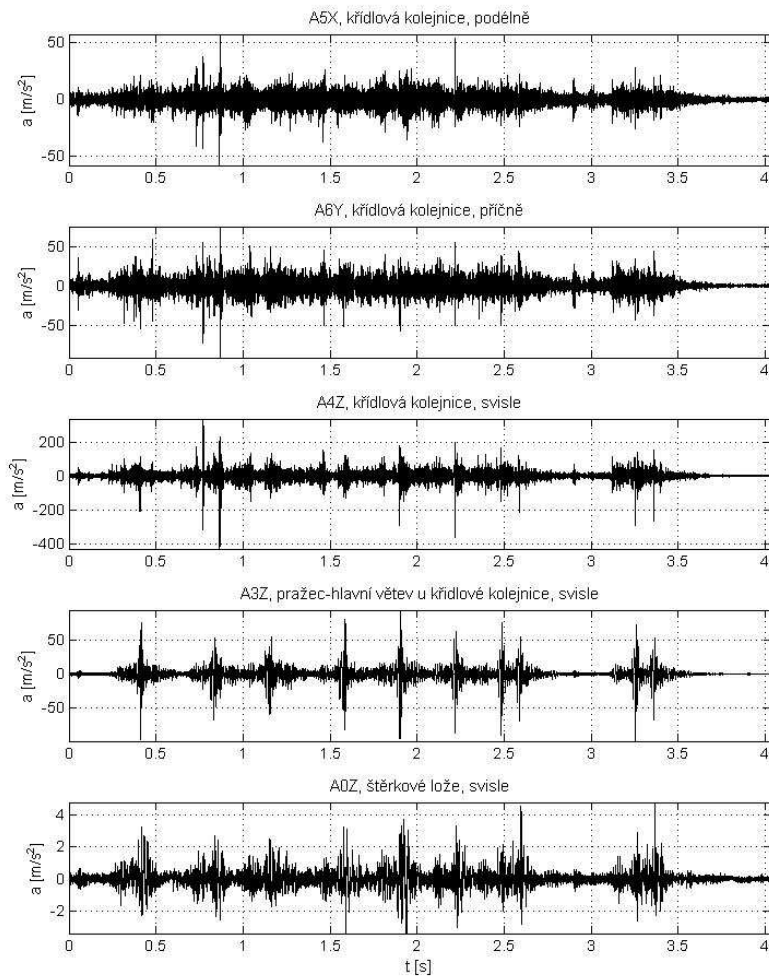
9. Loko 363 náklad – 93 km/h

D:\Sadleková\63_nove\9_Vlak_2013_04_08_120546.txt



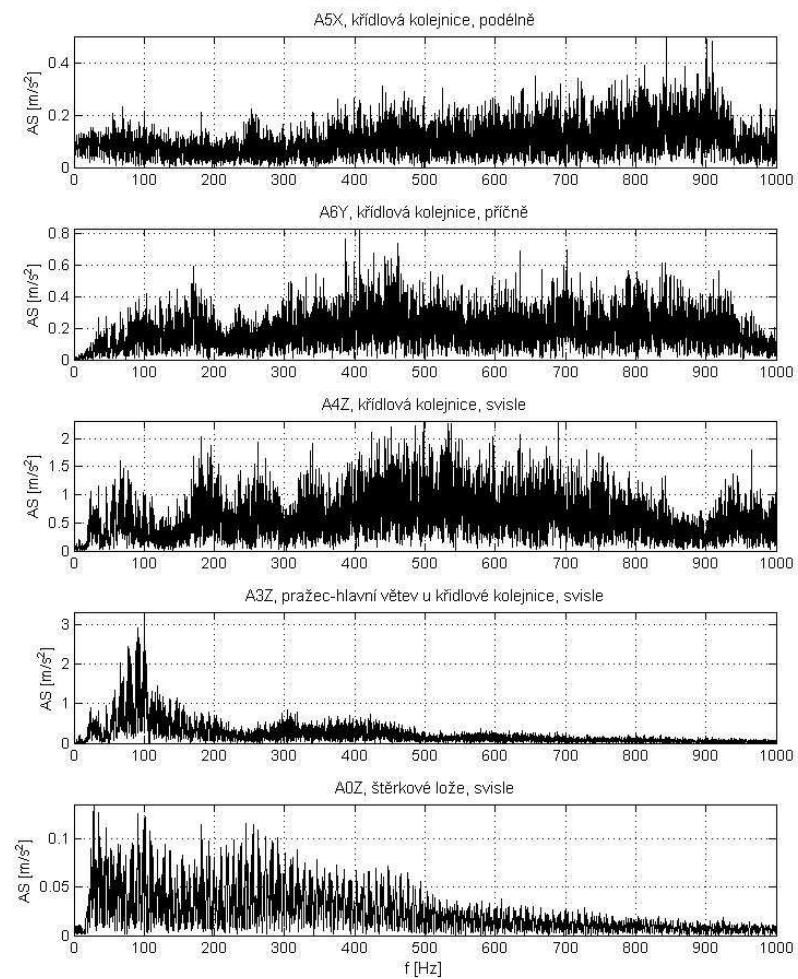
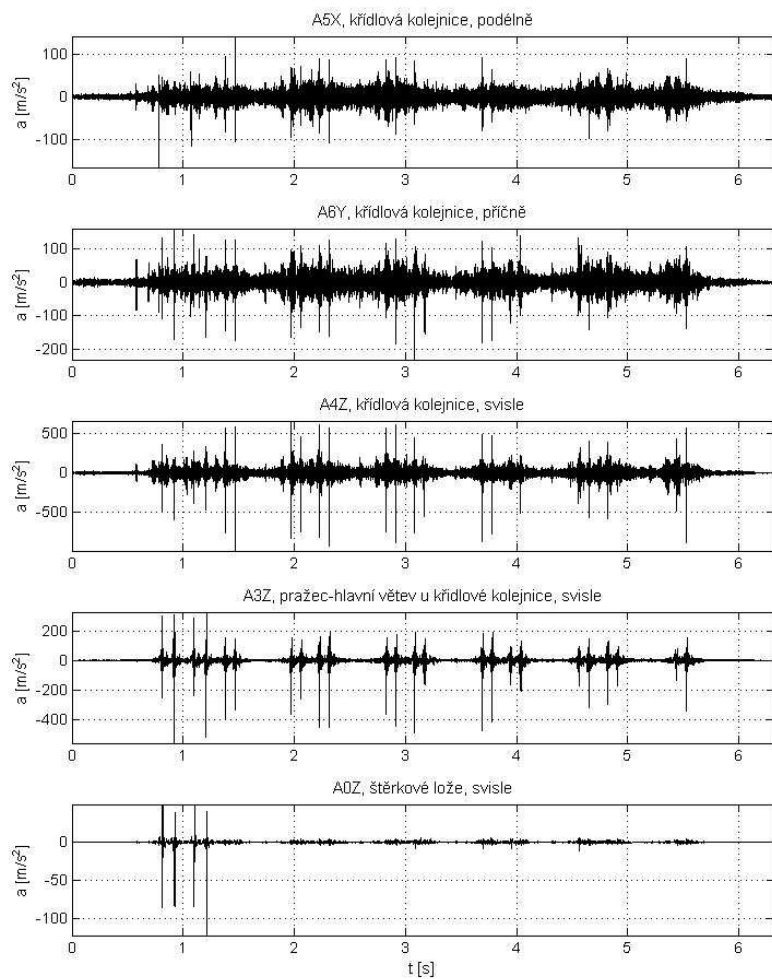
10. MTVT + prac. Stroje – 68 km/h

D:\Sadleková\63_nove\10_Vlak_2013_04_08_121034.txt



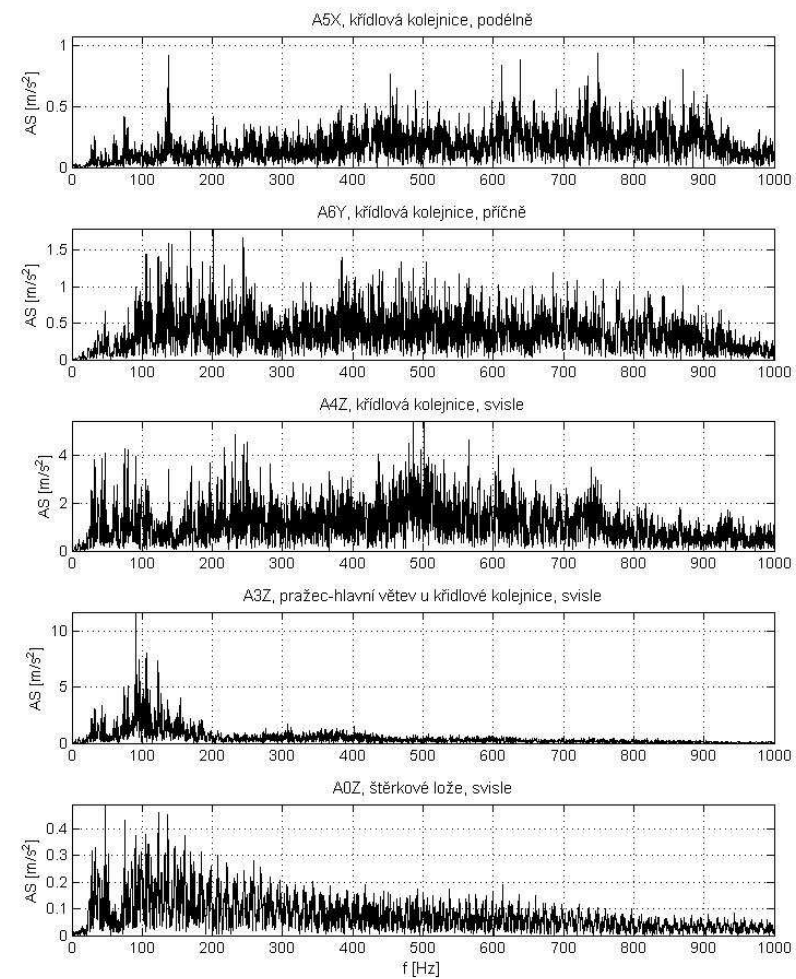
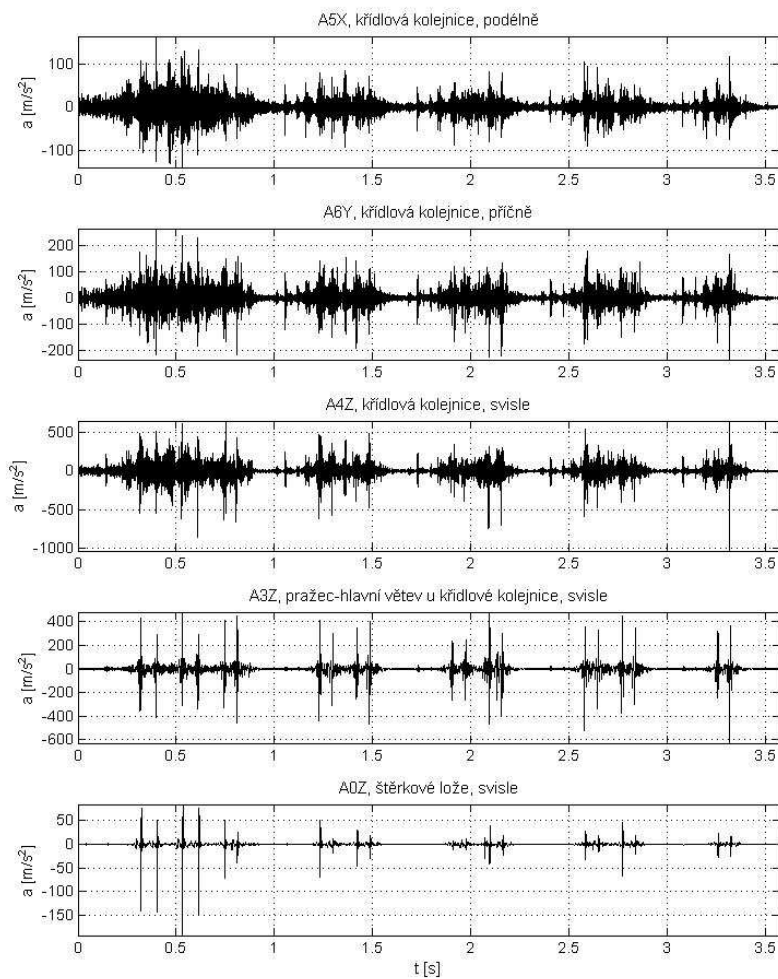
11. Loko 150 – 107 km/h

D:\Sadleková\63_nove\11_Vlak_2013_04_08_121953.txt



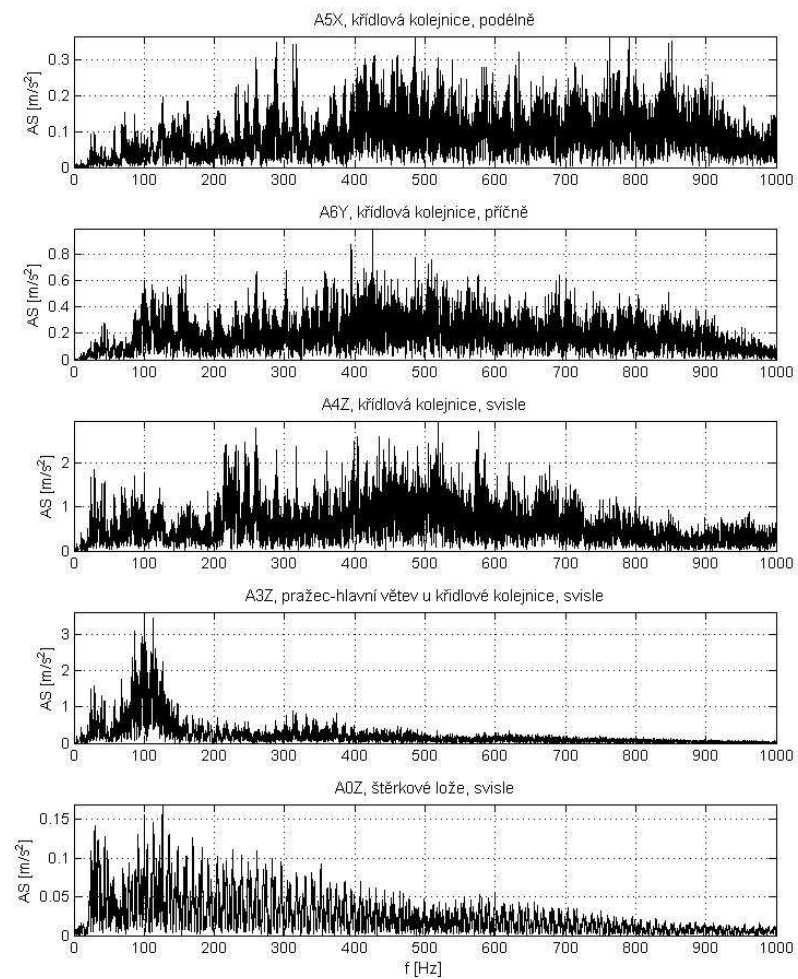
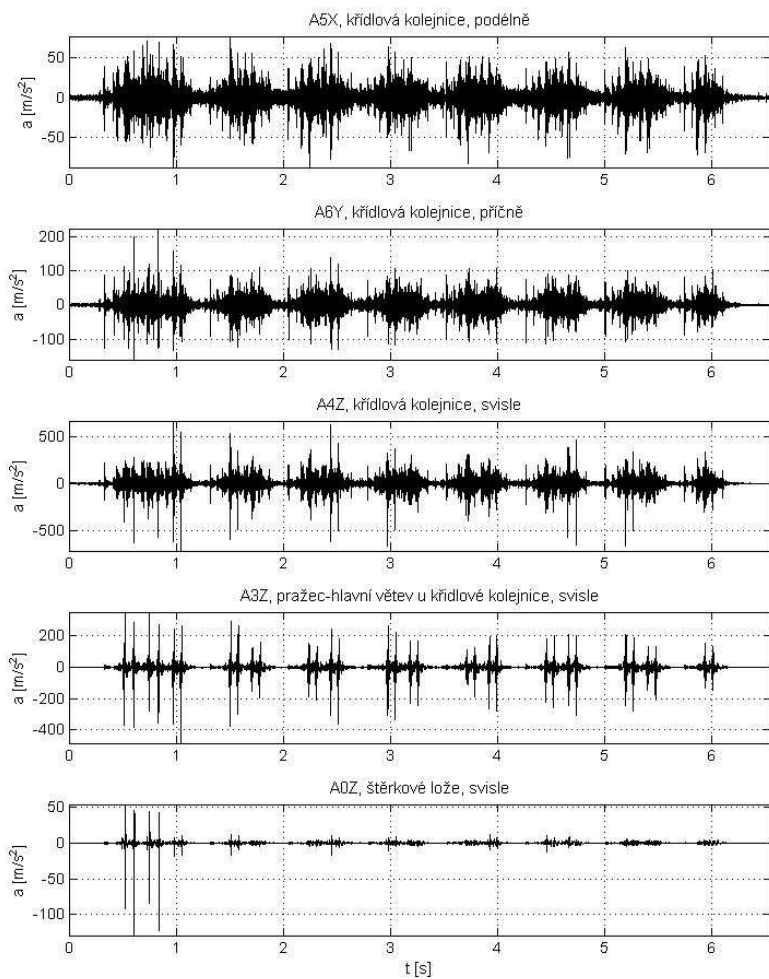
12. Loko 363 – 128 km/h

D:\Sadleková\63_nove\12_Vlak_2013_04_08_123213.txt



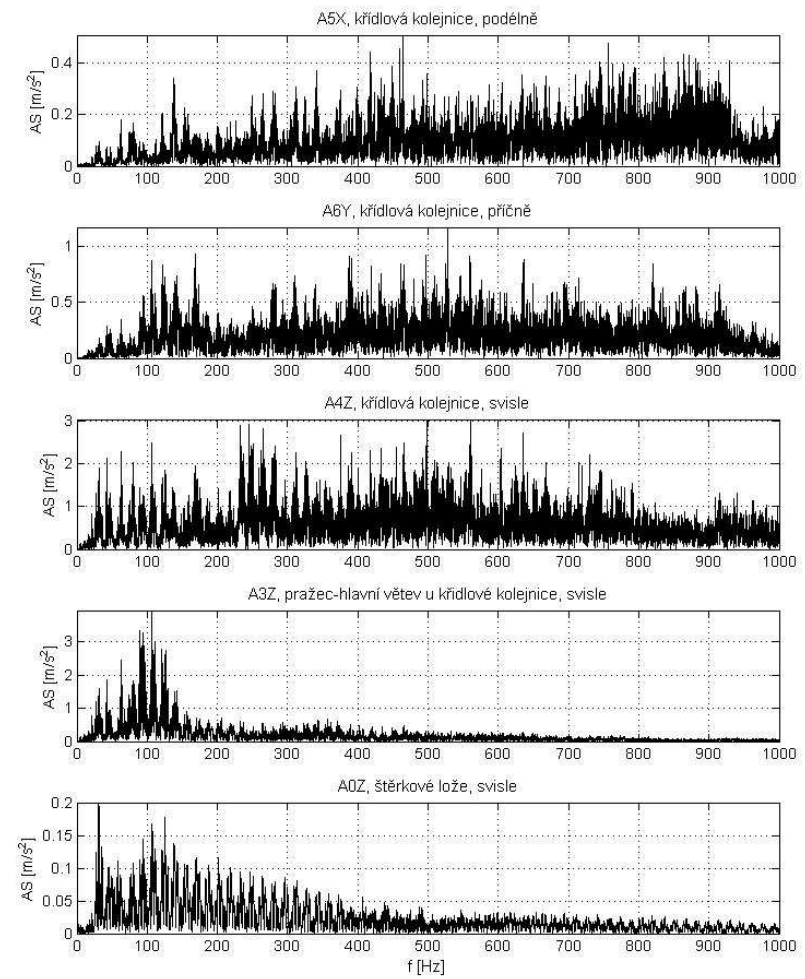
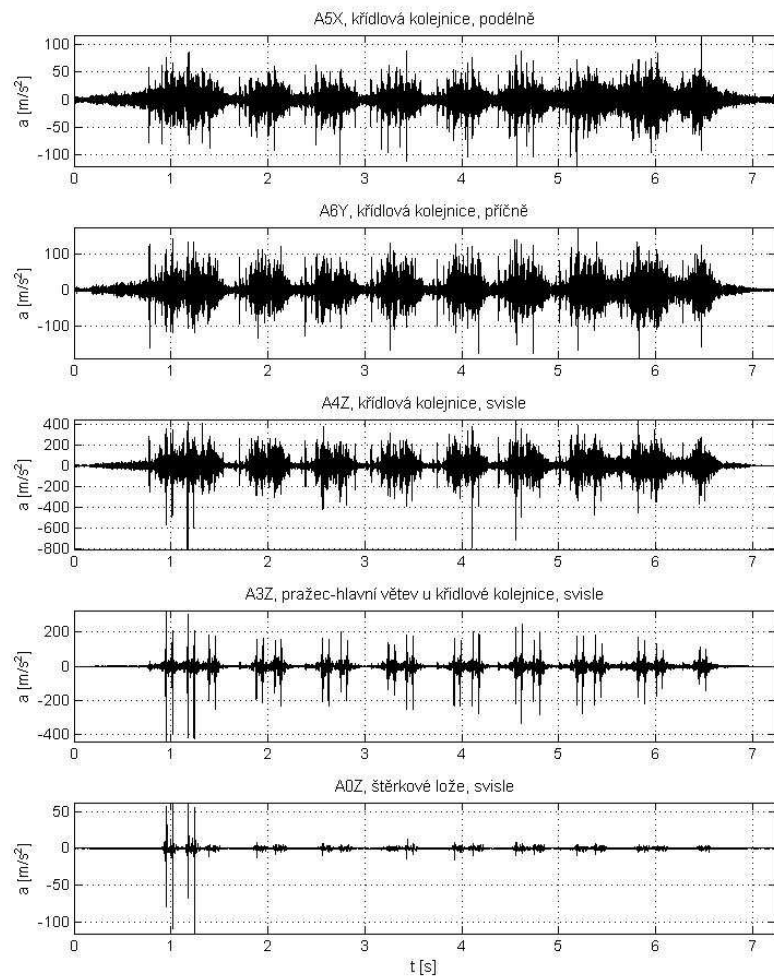
13. Loko 151 – 130 km/h

D:\Sadleková\63_nove\13_Vlak_2013_04_08_124247.txt



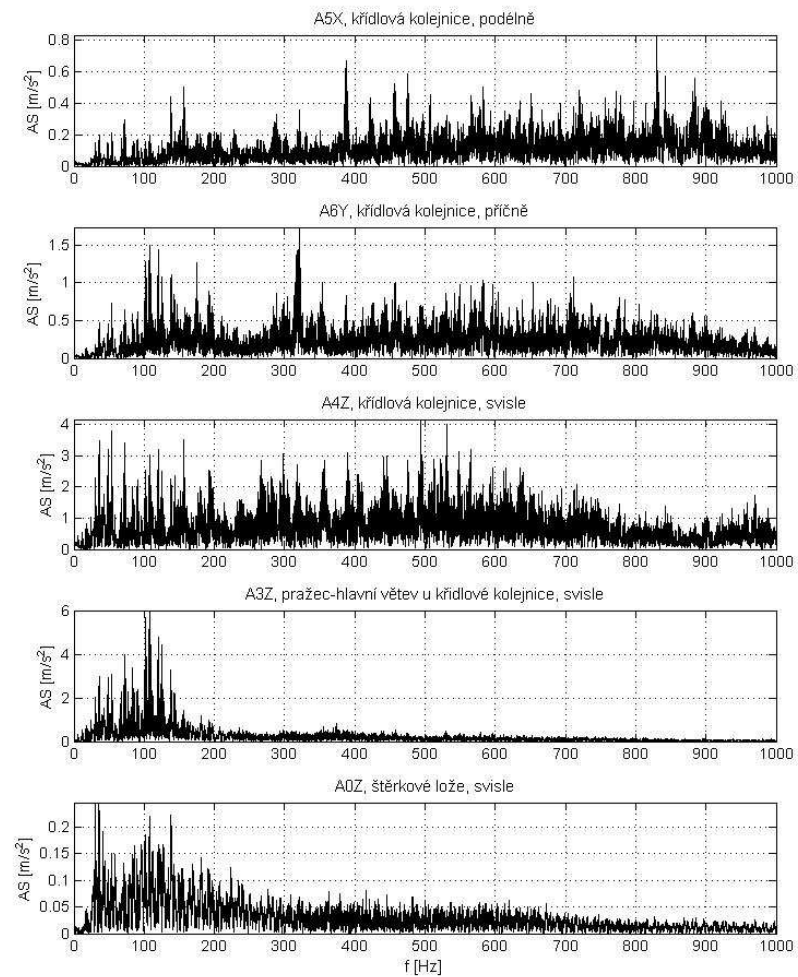
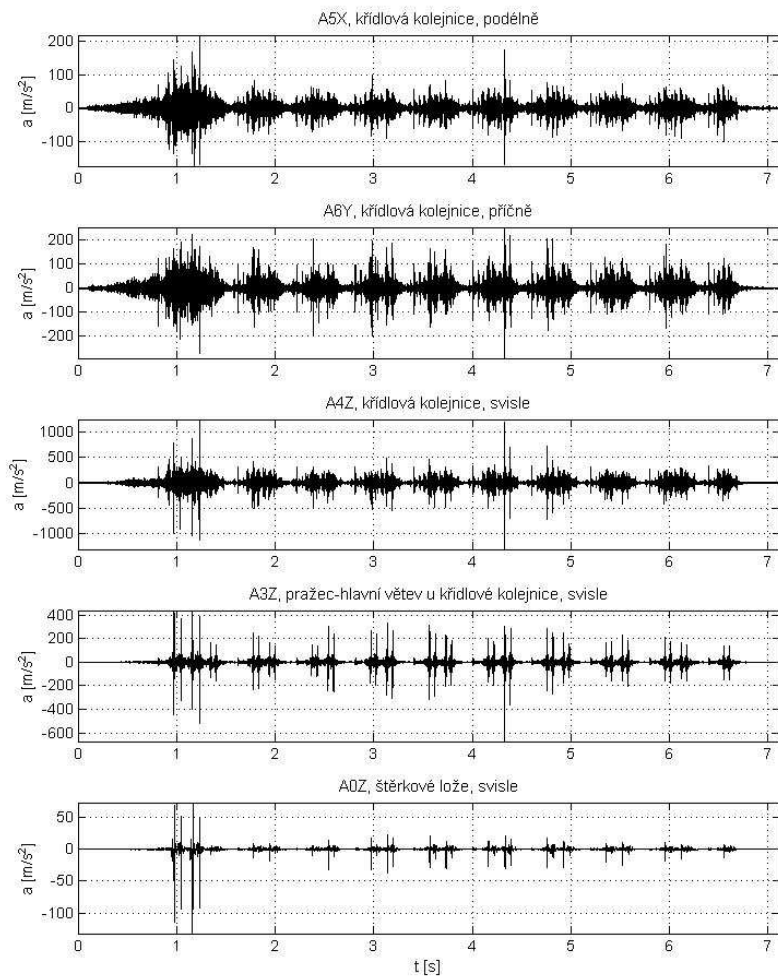
14. Loko 380 – 141 km/h

D:\Sadlekova\63_nove\14_Vlak_2013_04_08_124703.txt



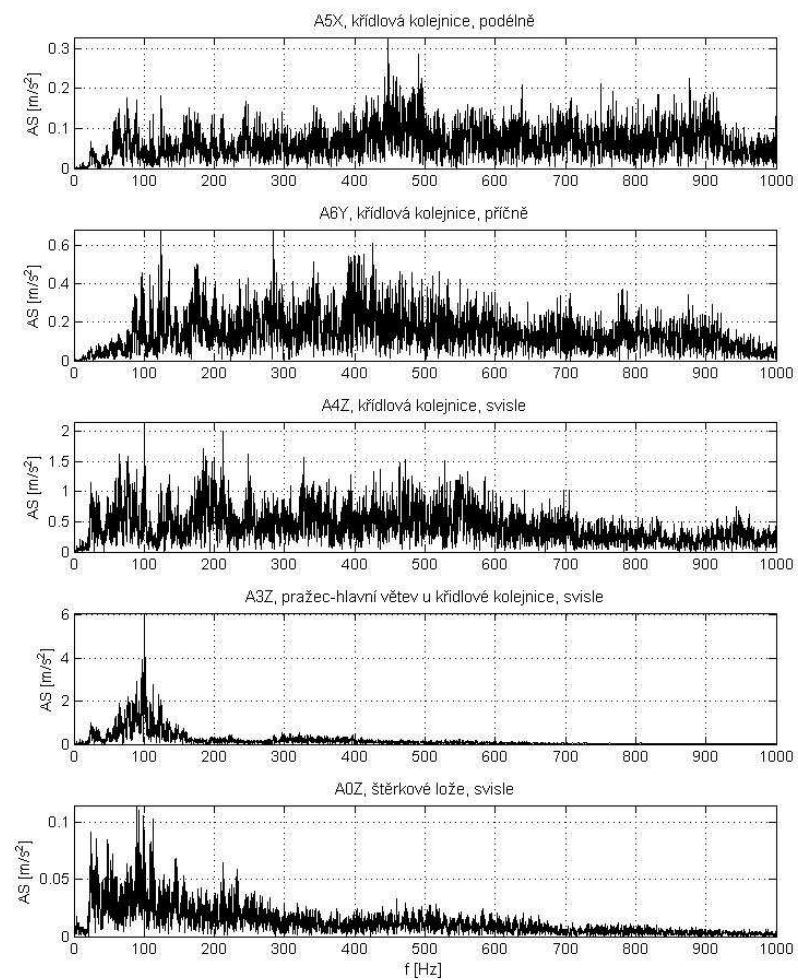
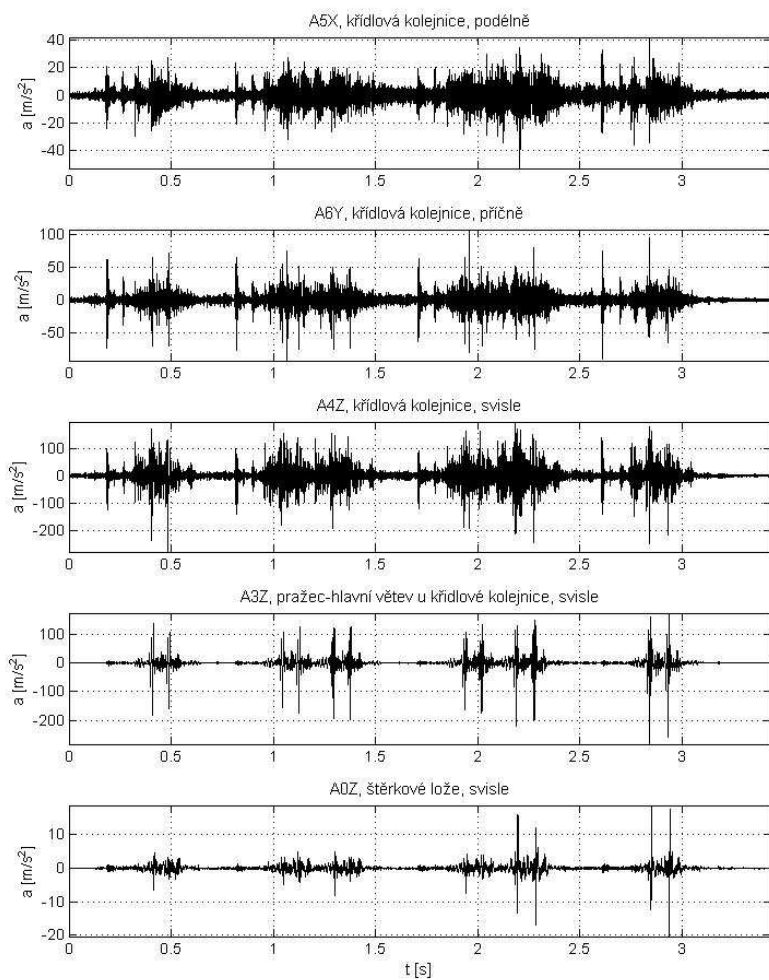
15. Loko 350 – 160 km/h

D:\Sadleková\63_nove\15_Vlak_2013_04_08_130828.txt



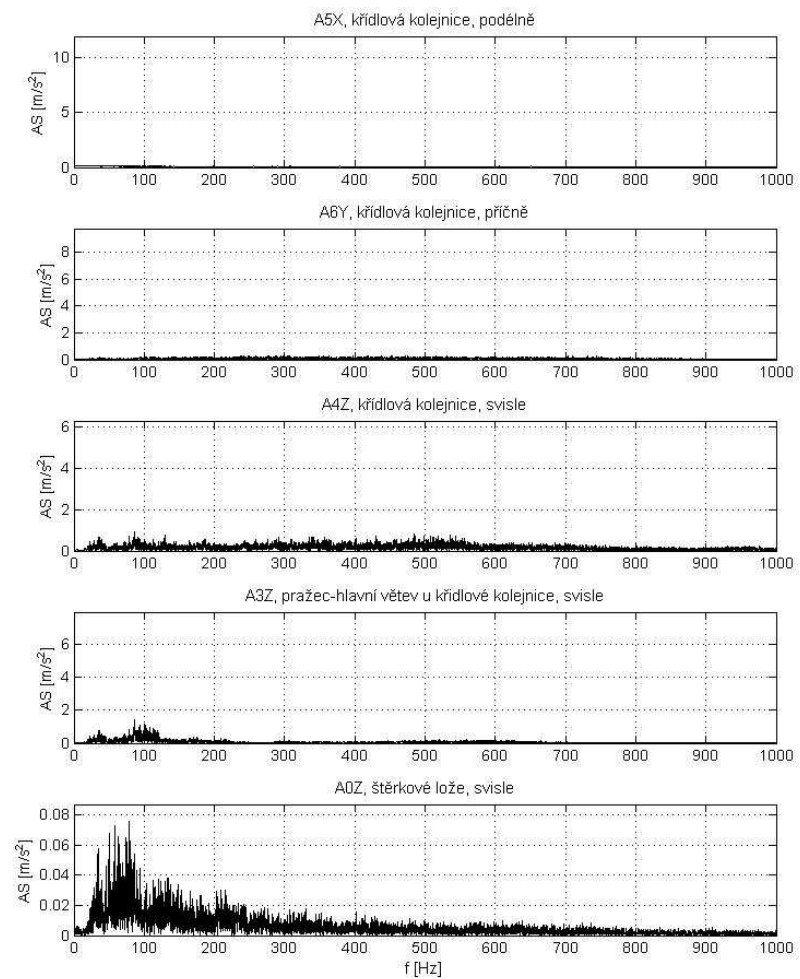
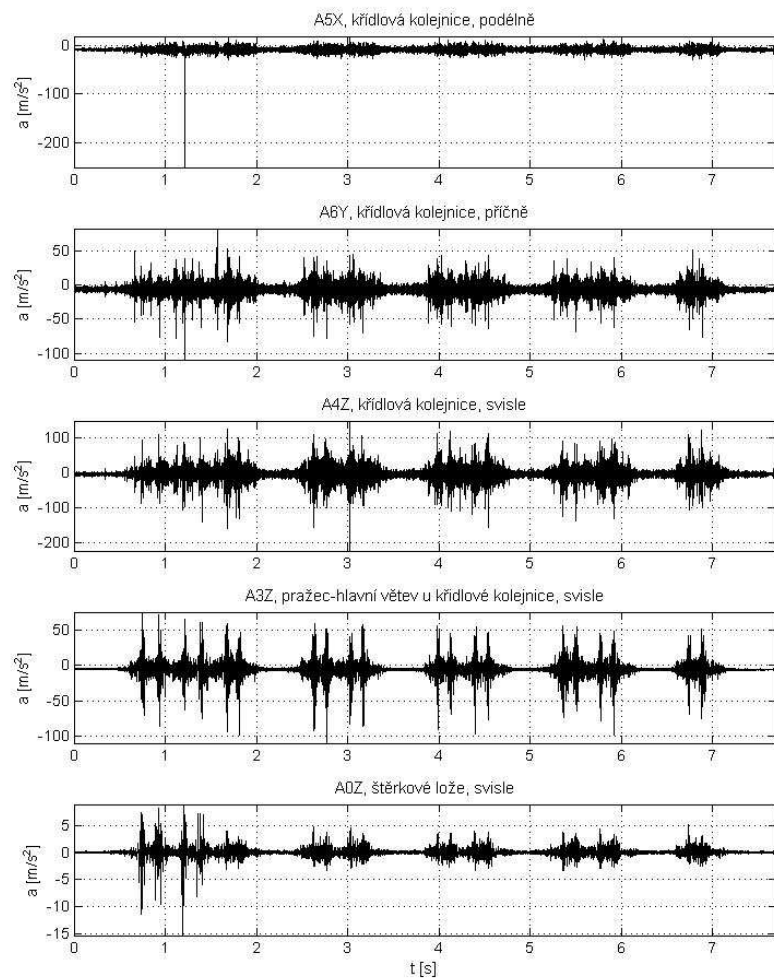
16. Loko 471 – 122 km/h

D:\Sadleková\63_nove\16_Vlak_2013_04_08_132427.txt



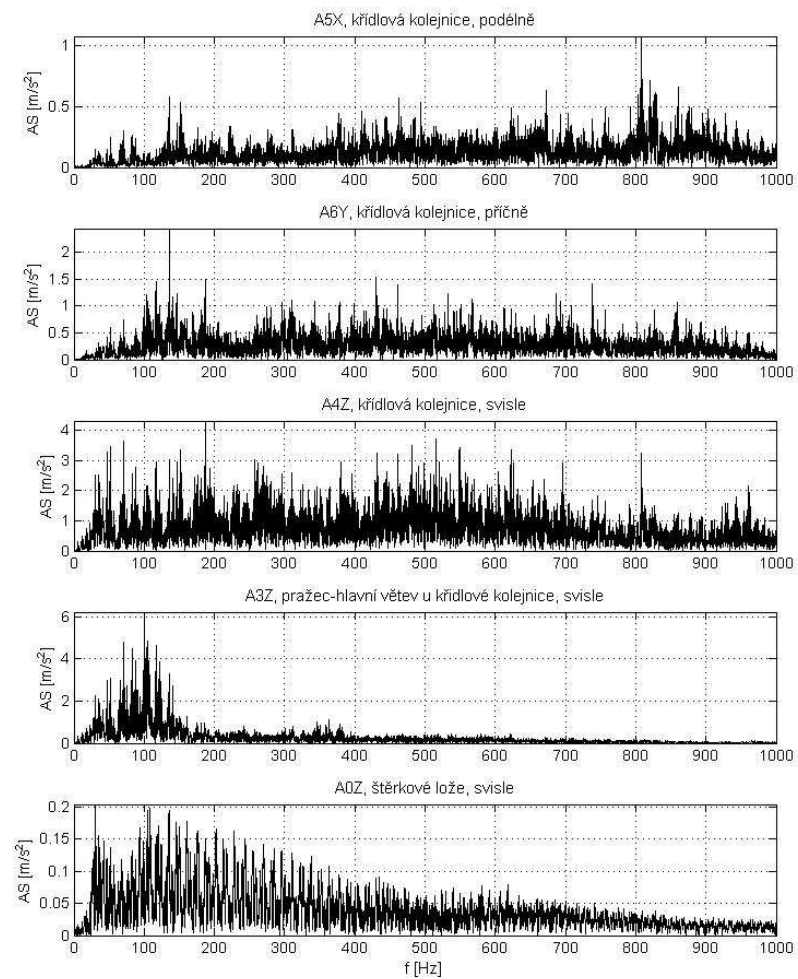
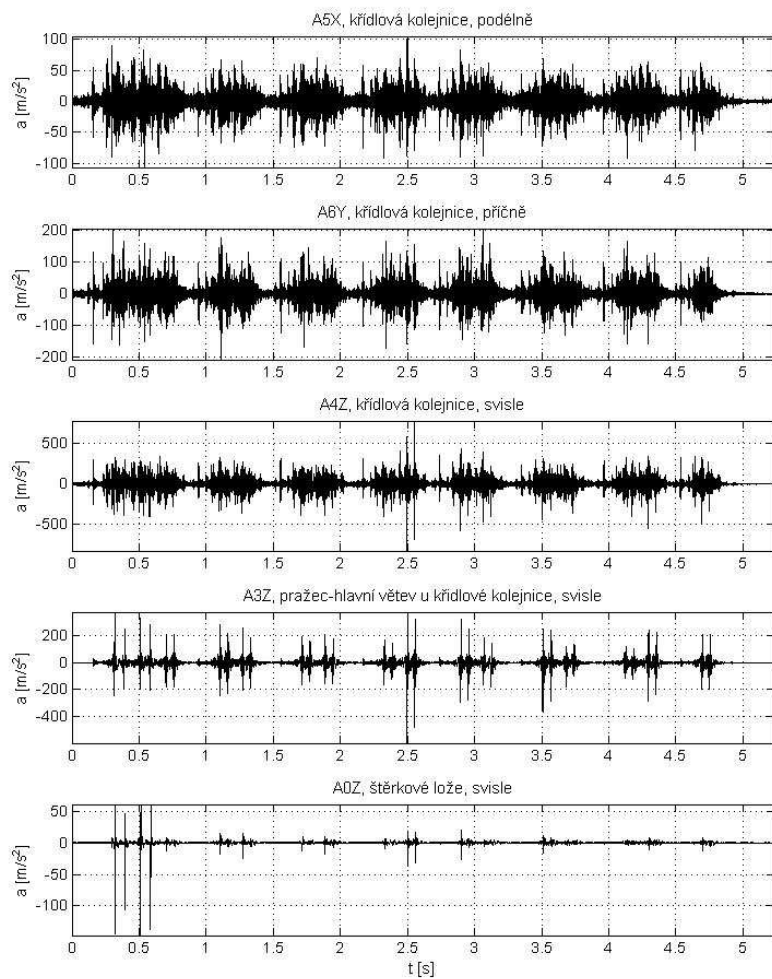
17. Loko 362 – 69 km/h

D:\Sadleková\63_nove\17_Vlak_2013_04_08_132652.txt



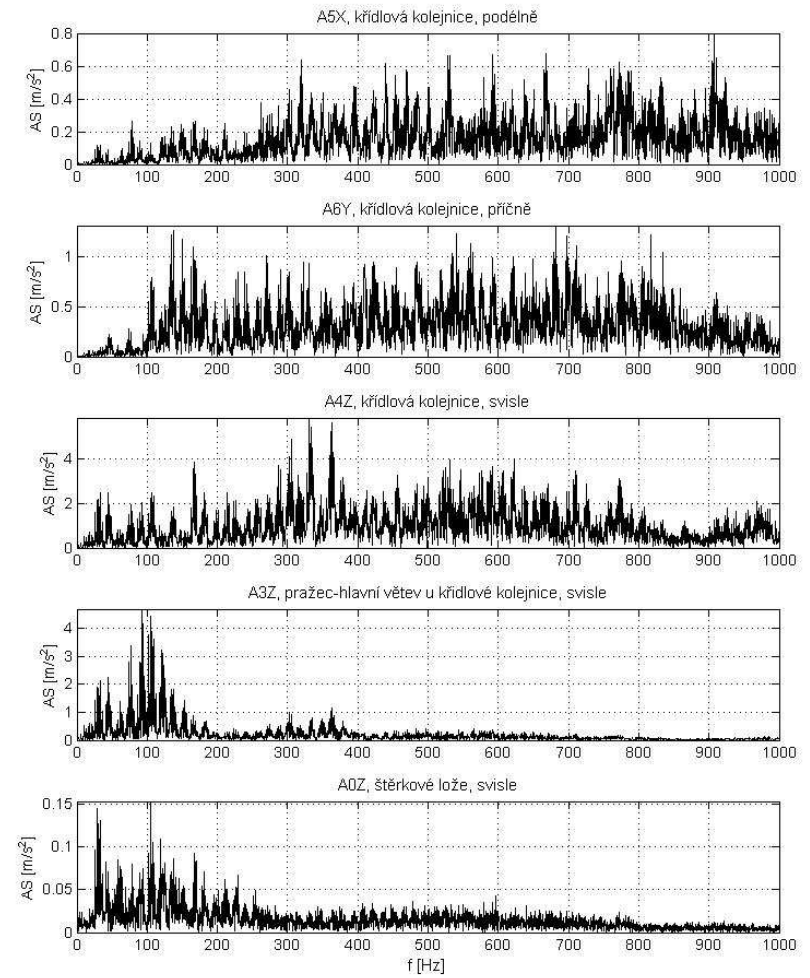
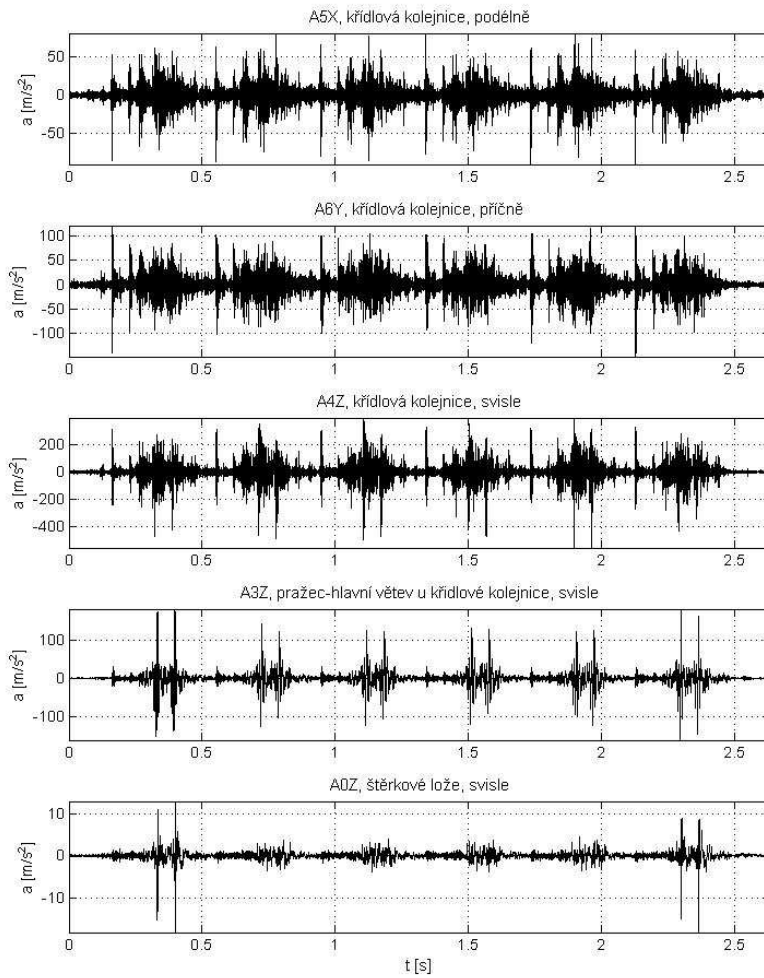
18. Loko 151 – 156 km/h

D:\Sadleková\63_nove\18_Vlak_2013_04_08_134207.txt



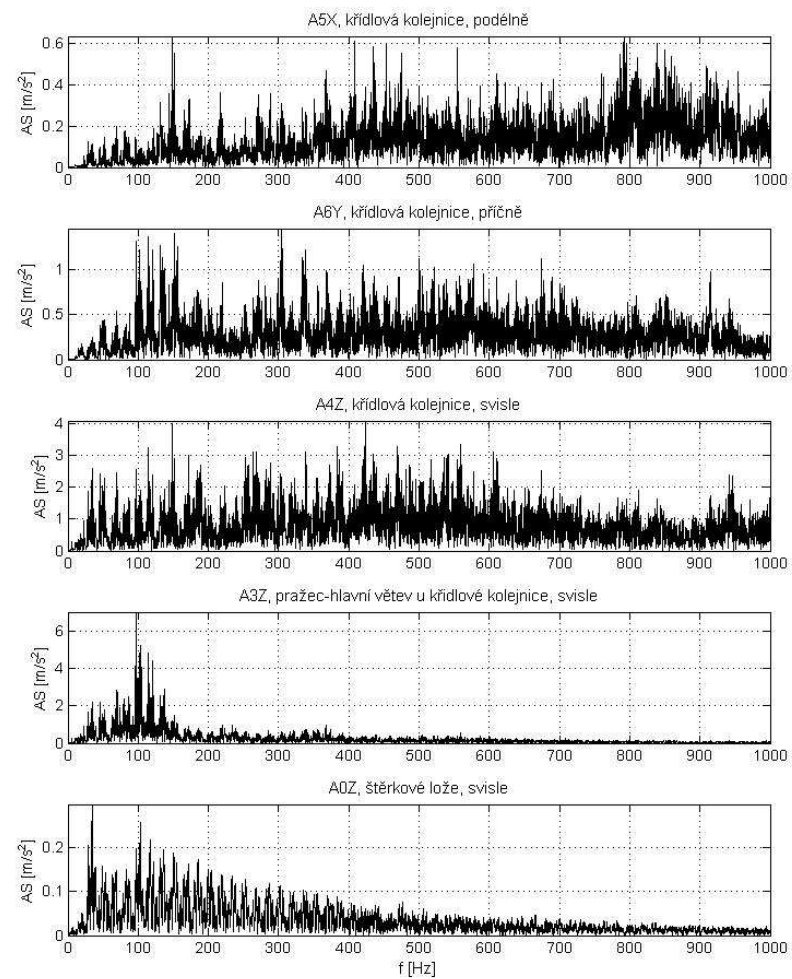
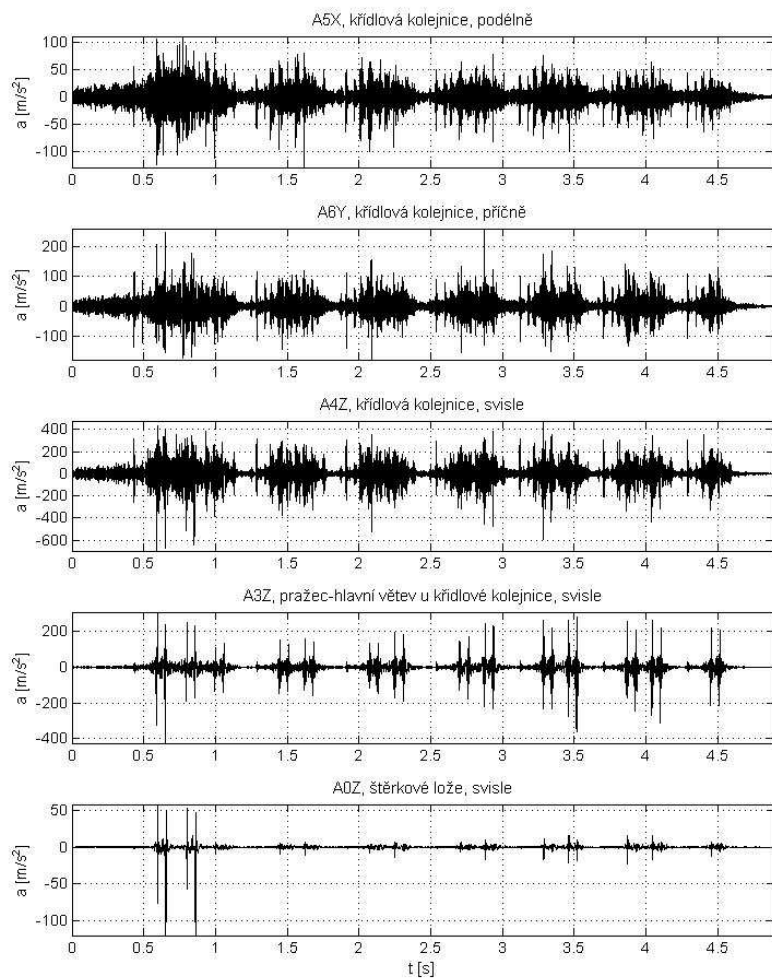
19. Leo express – 154 km/h

D:\Sadleková\63_nove\19_Vlak_2013_04_08_134445.txt



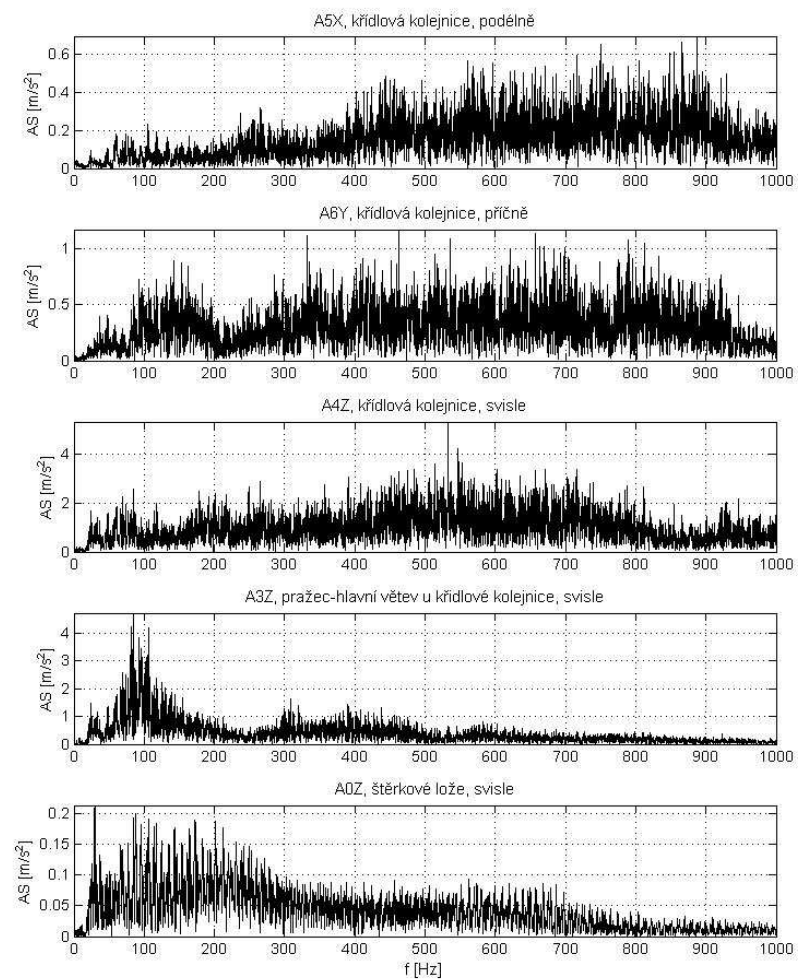
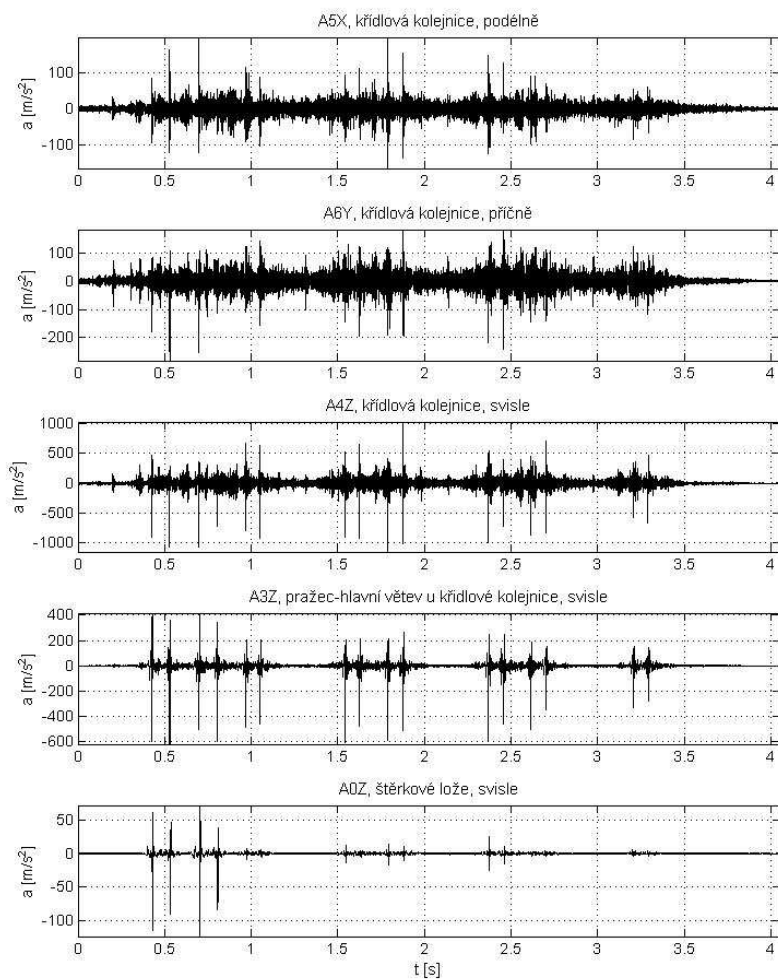
20. Loko 380 – 153 km/h

D:\Sadleková\63_nove\20_Vlak_2013_04_08_135945.txt



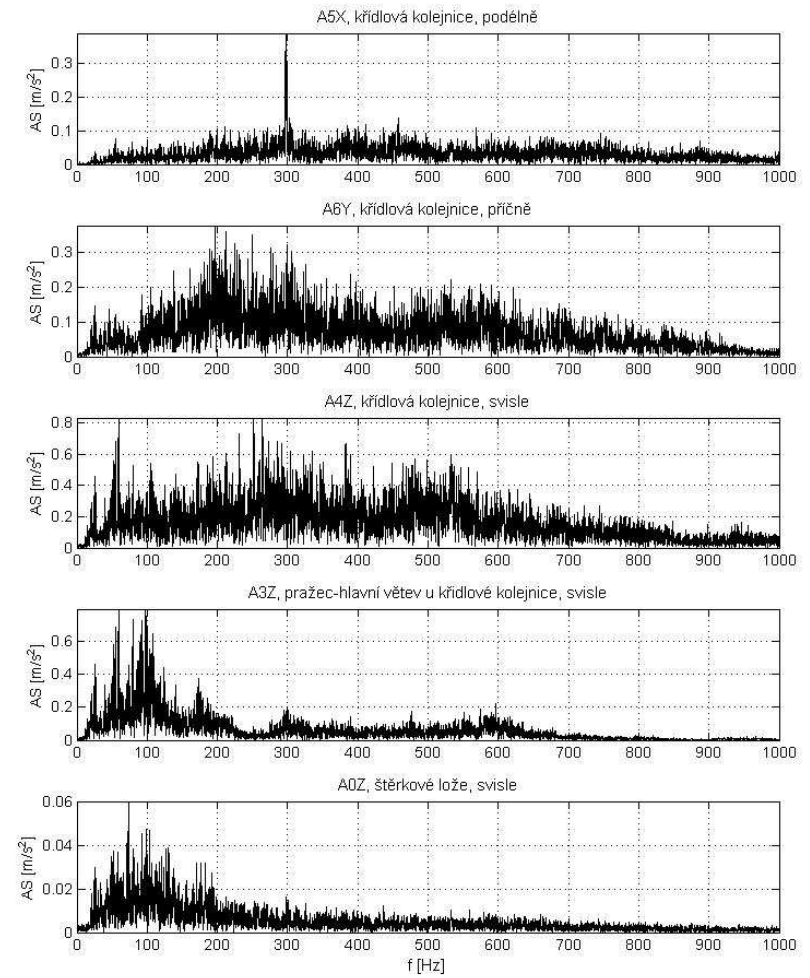
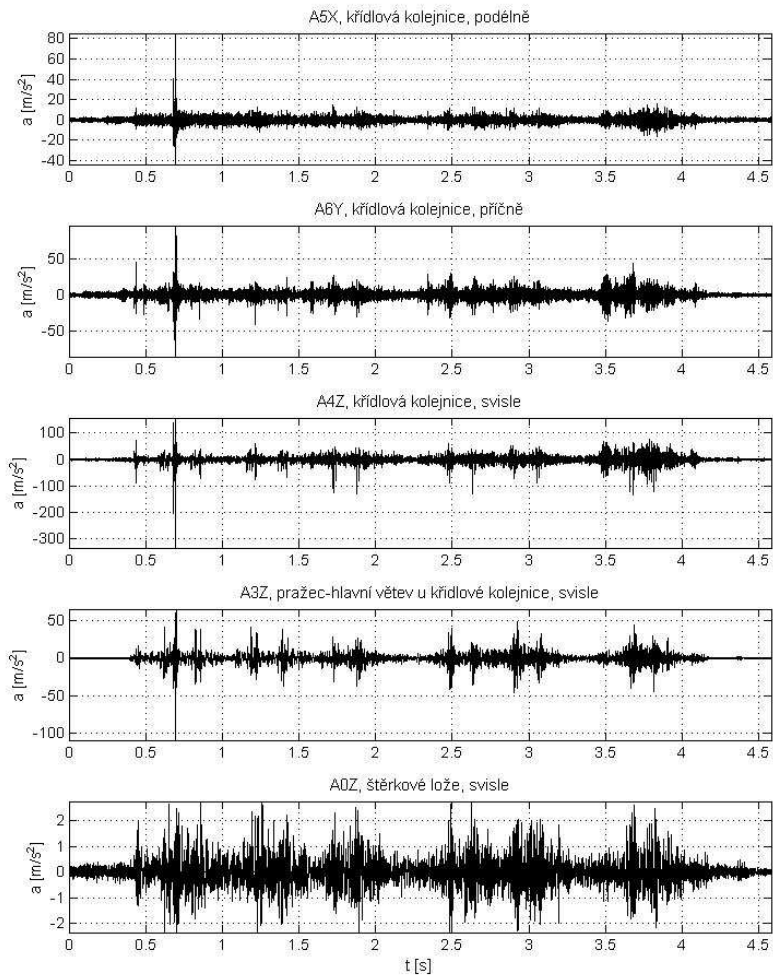
21. Loko 163 – 116 km/h

D:\Sadleková\63_nove\21_Vlak_2013_04_08_141141.txt



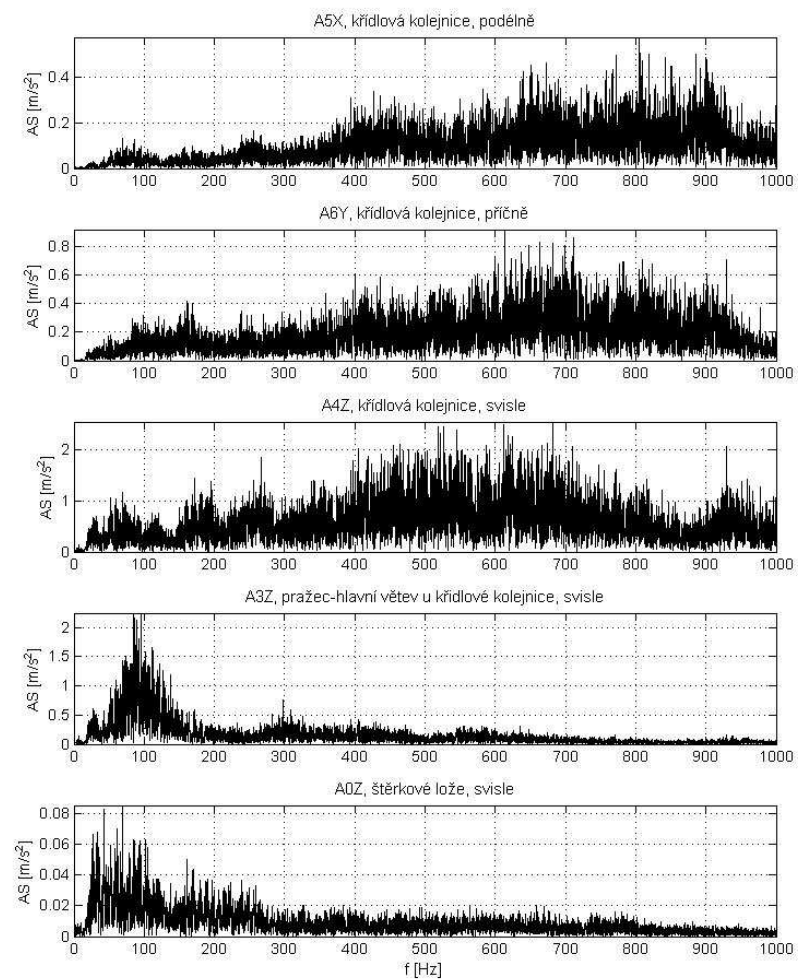
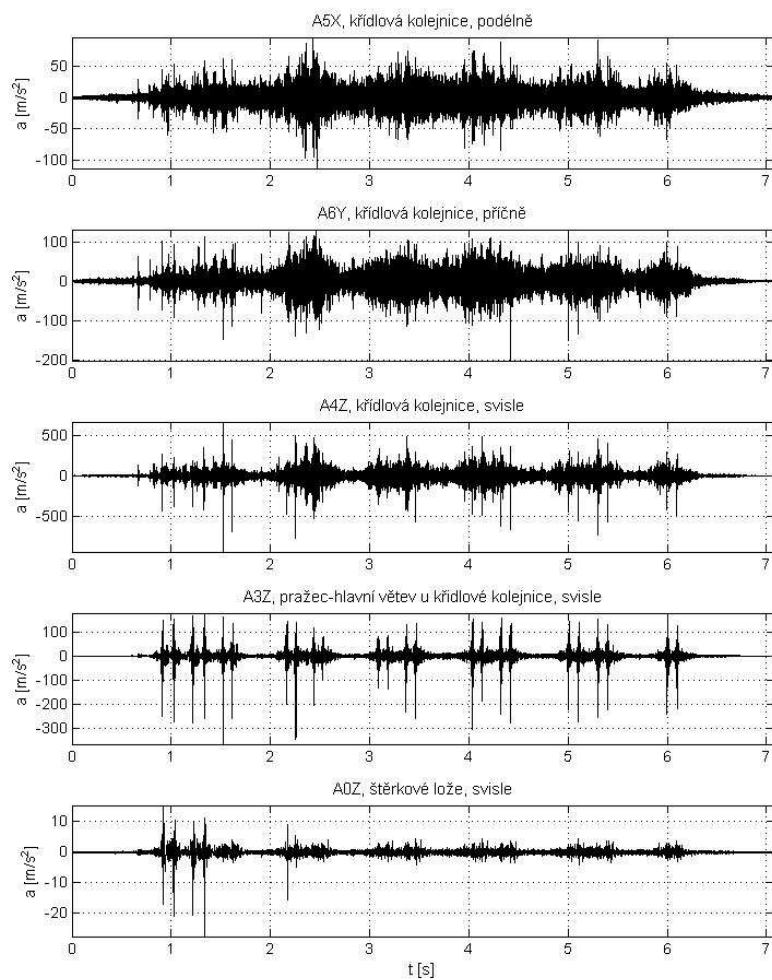
22. Loko 742 – 43 km/h

D:\Sadleková\63_nove\22_Vlak_2013_04_08_141559.txt



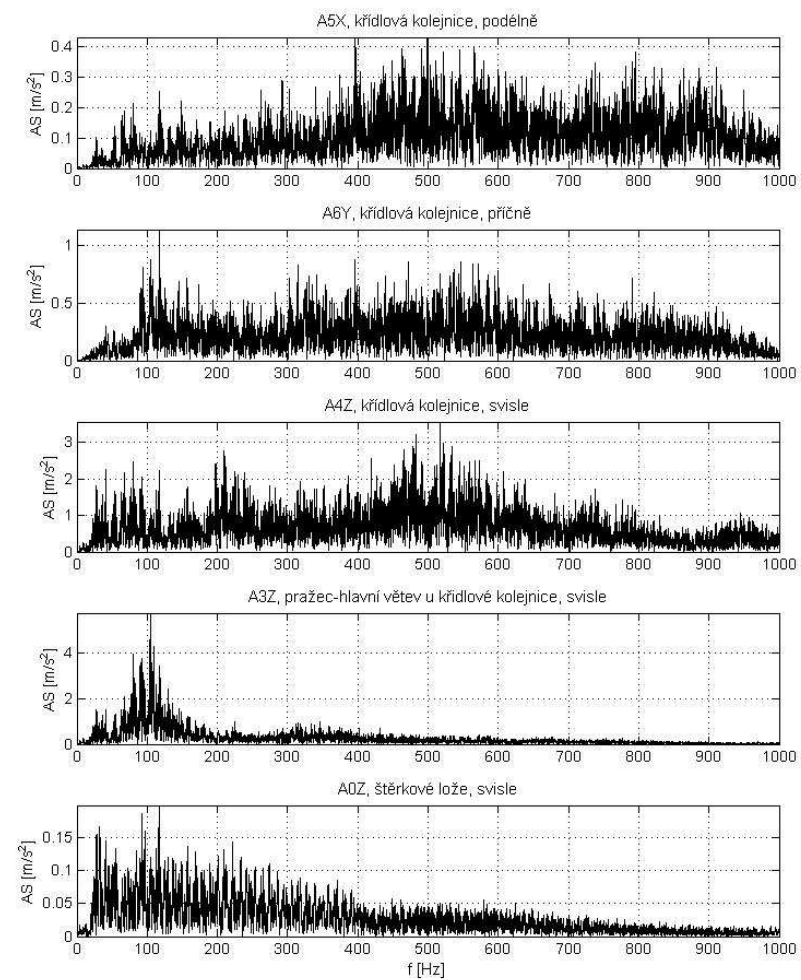
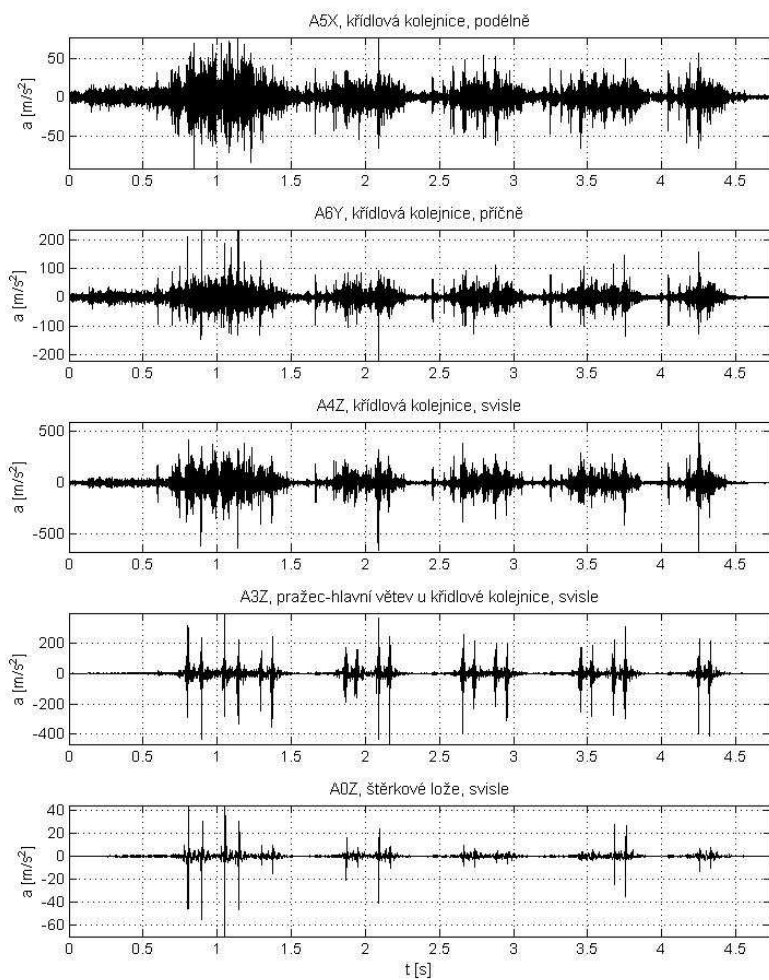
23. Loko 150 – 117 km/h

D:\Sadleková\63_nove\23_Vlak_2013_04_08_142225.txt



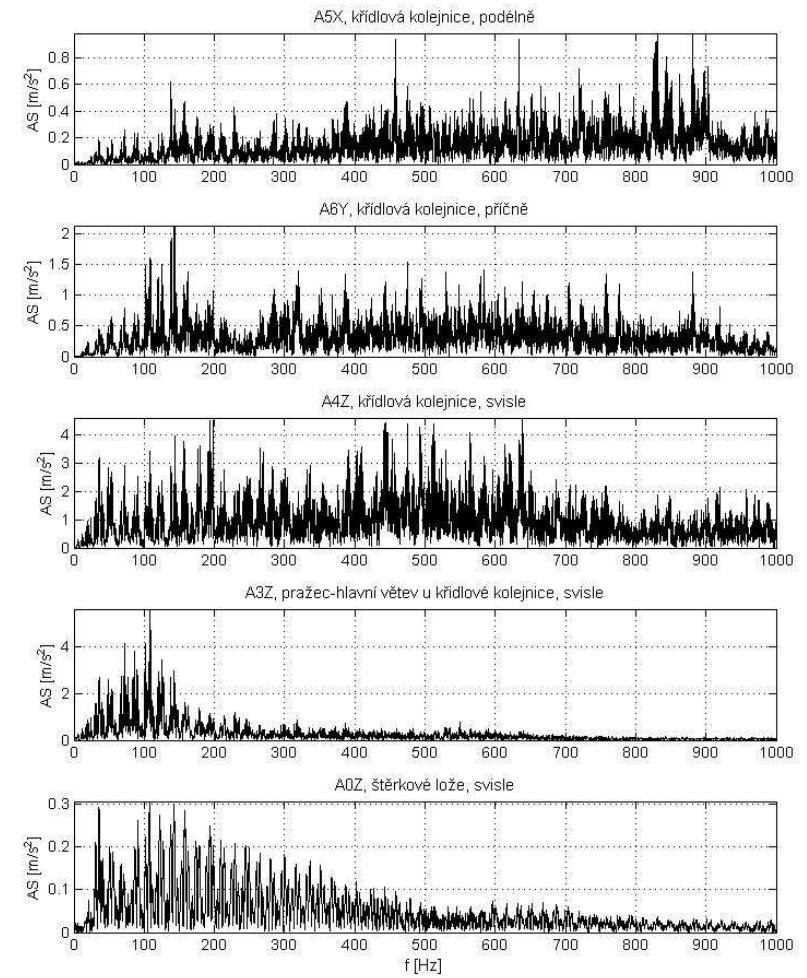
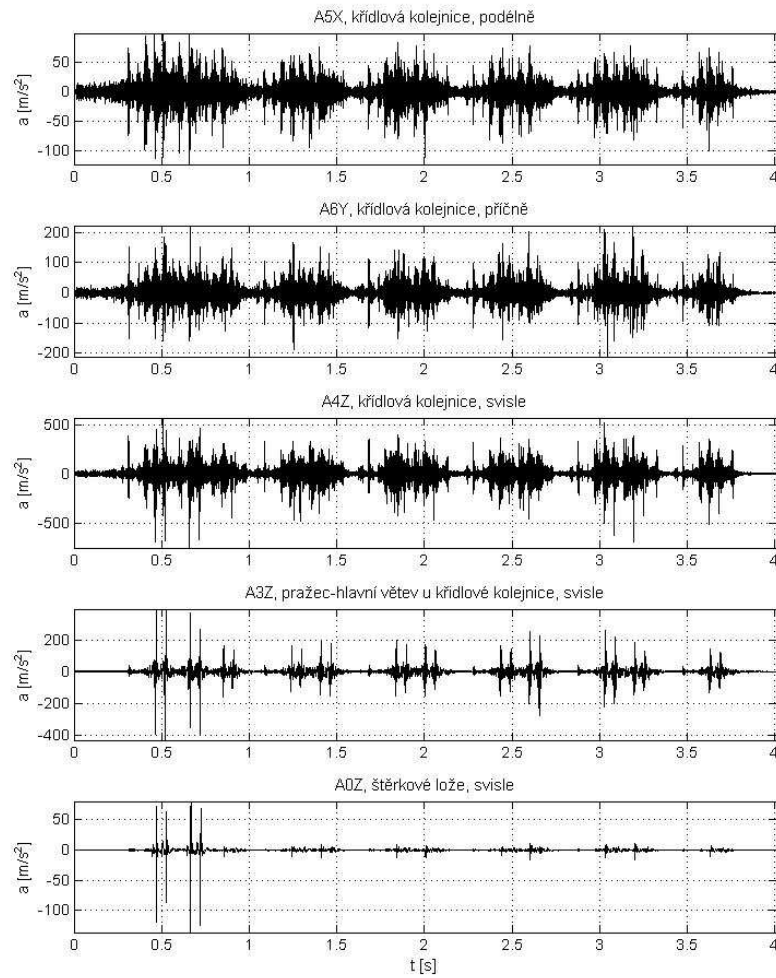
24. 163 Regio Jet – 133 km/h

D:\Sadleková\63_nove\24_Vlak_2013_04_08_143034.txt



25. Loko 380 - 162 km/h

D:\Sadleková\63_nove\25_Vlak_2013_04_08_143639.txt



26. 680 Pendolino – 161 km/h

D:\Sadleková\63_nove\26_Vlak_2013_04_08_144251.txt

