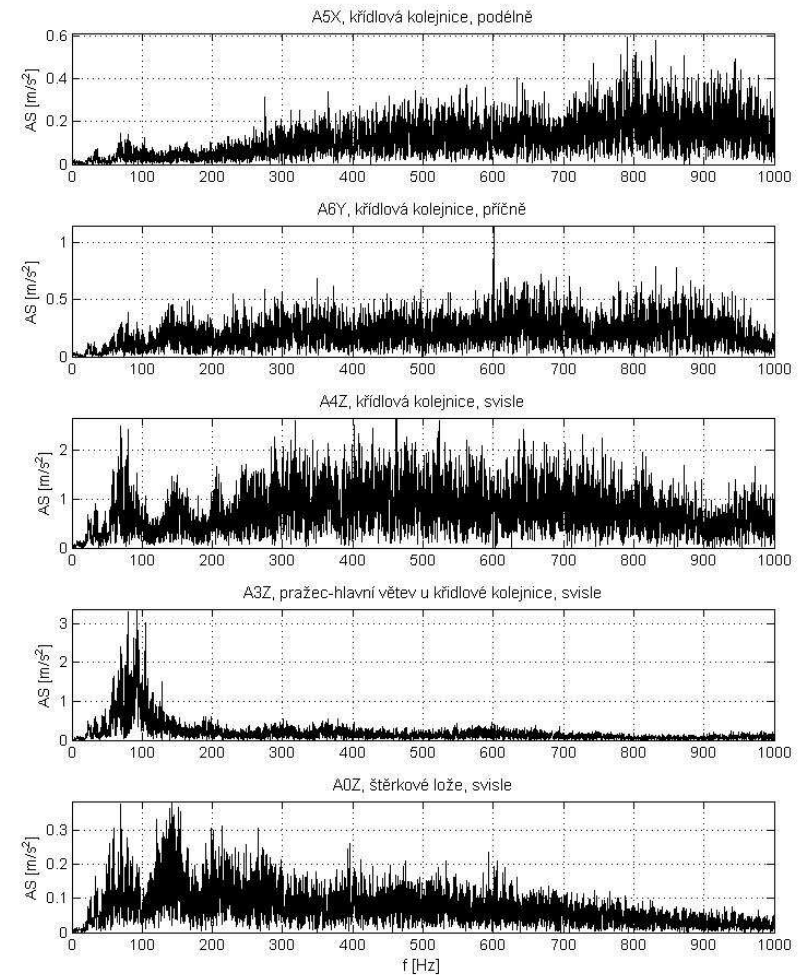
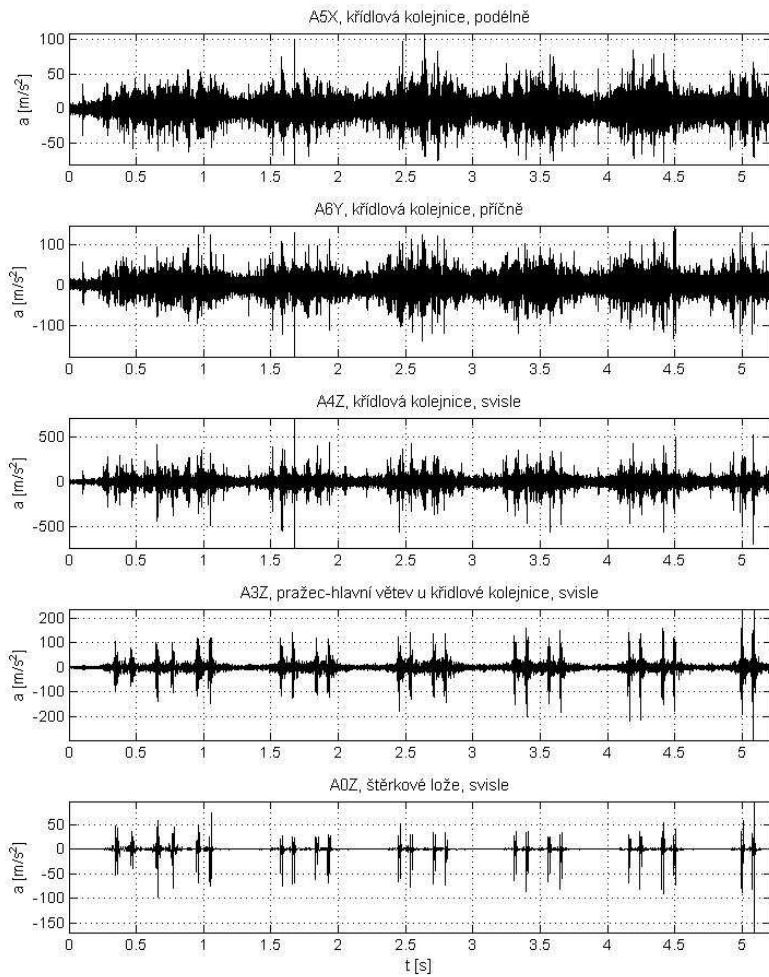


# **PŘÍLOHA F**

*Analýza zrychlení vibrací na výhybce č. 59*

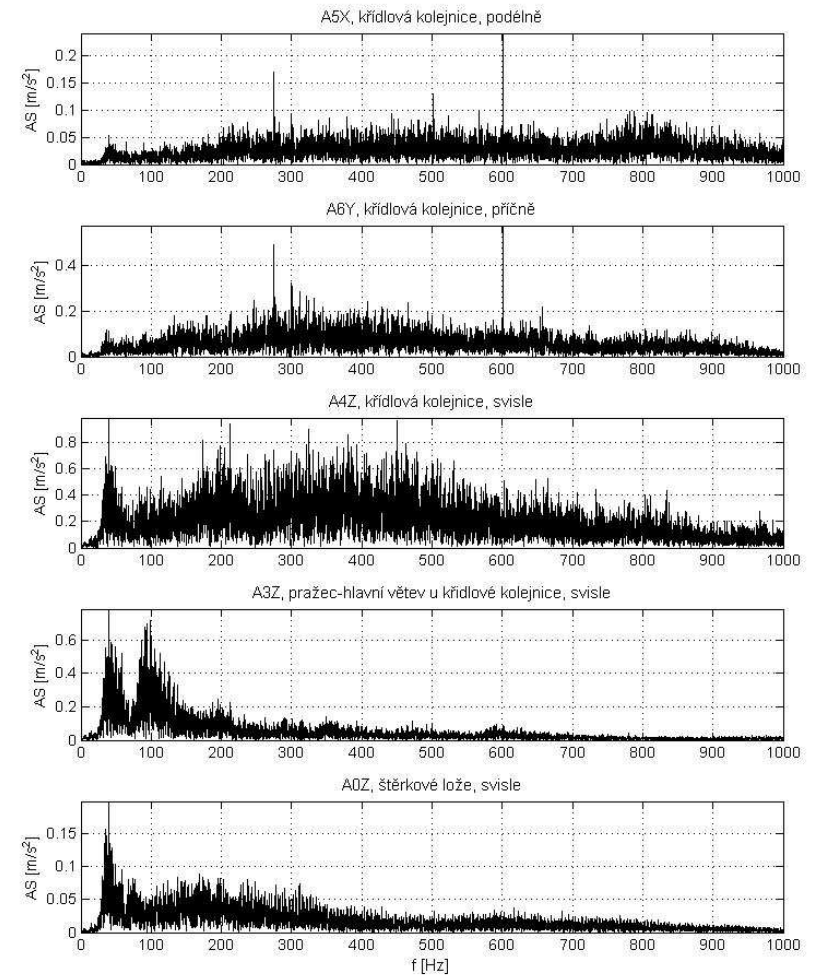
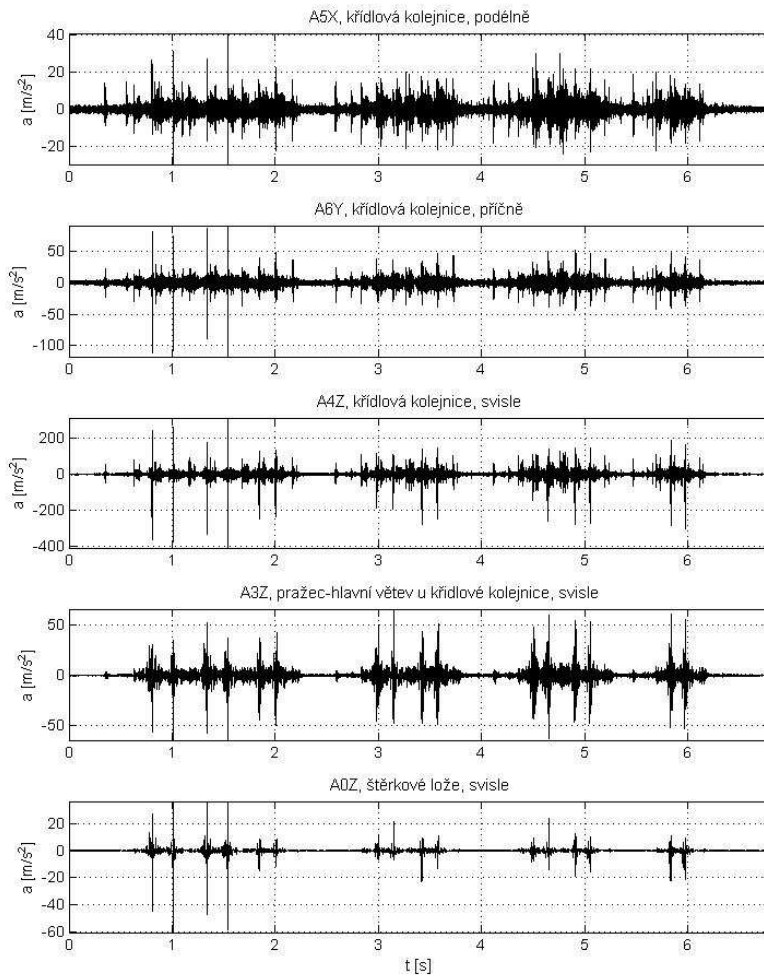
#### 4. Loko 362 – 94 km/h

D:\Sadleková\59\_nove4\_Vlak\_2013\_03\_25\_123944.txt



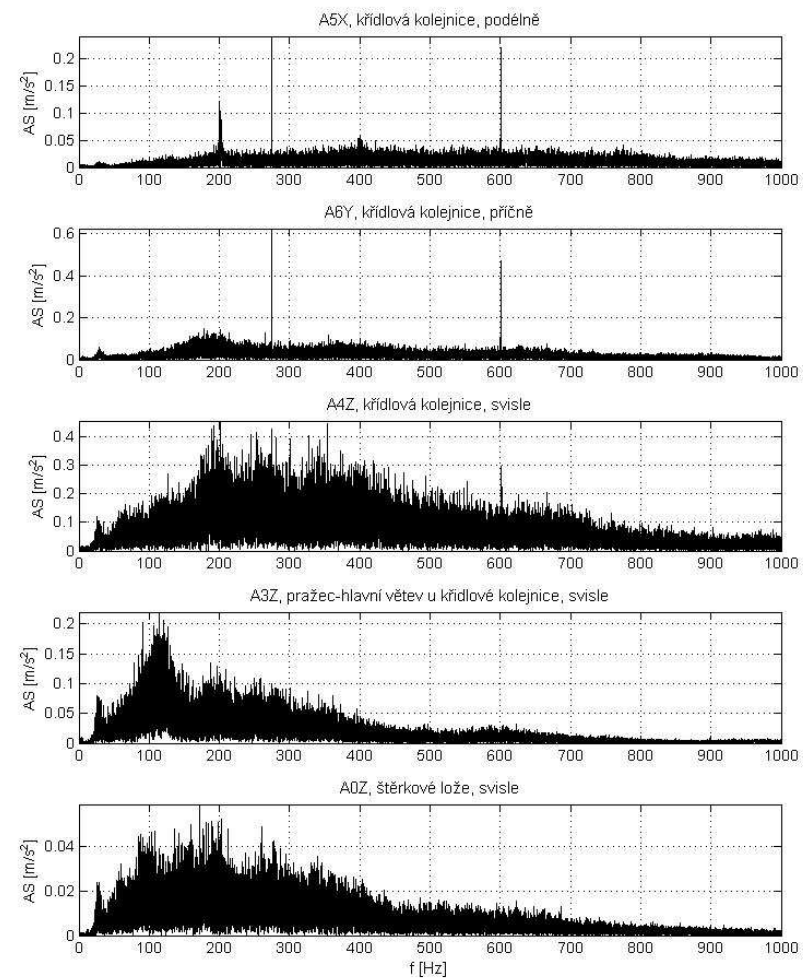
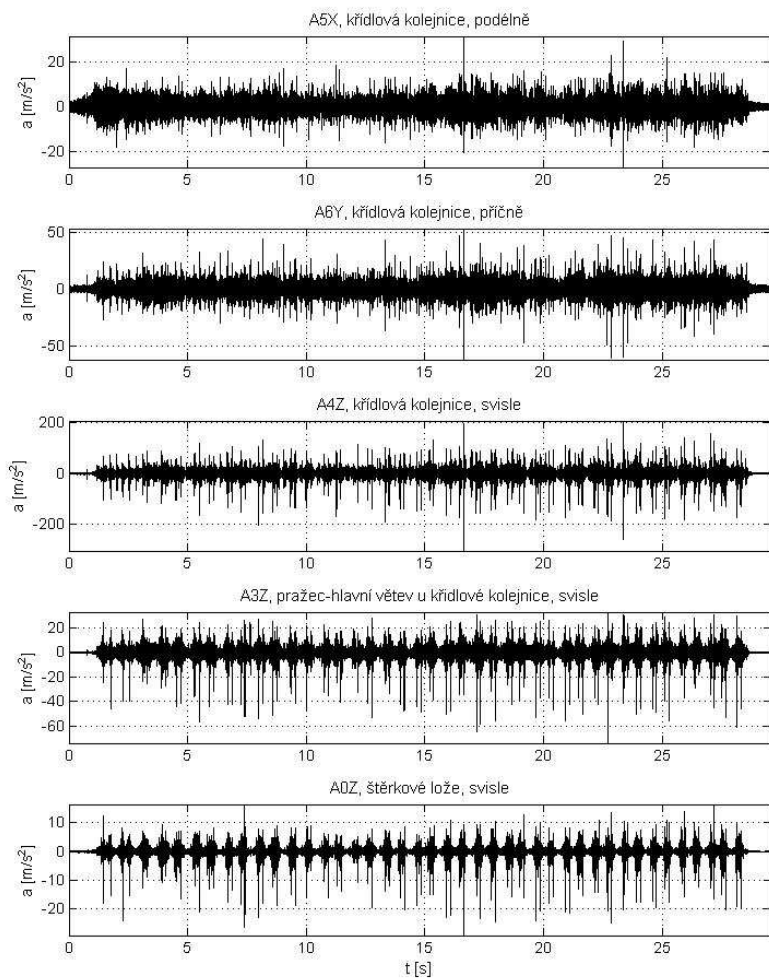
## 5. Loko 163 – 51 km/h

D:\Sadlekova\59\_nove\5\_Vlak\_2013\_03\_25\_124200.txt



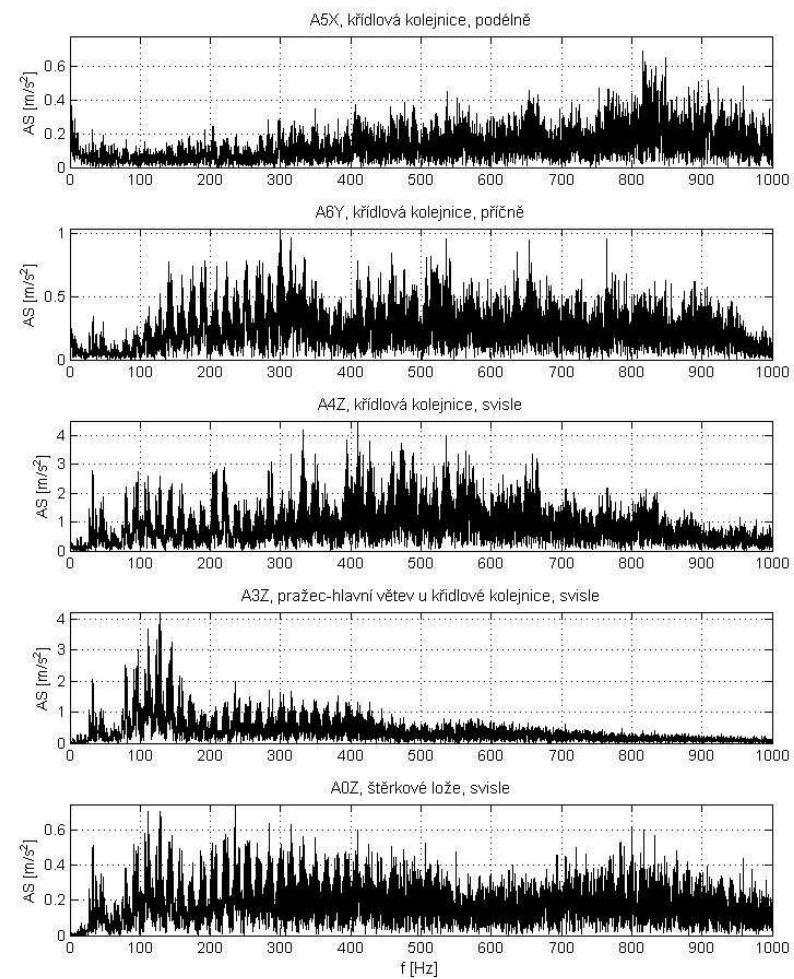
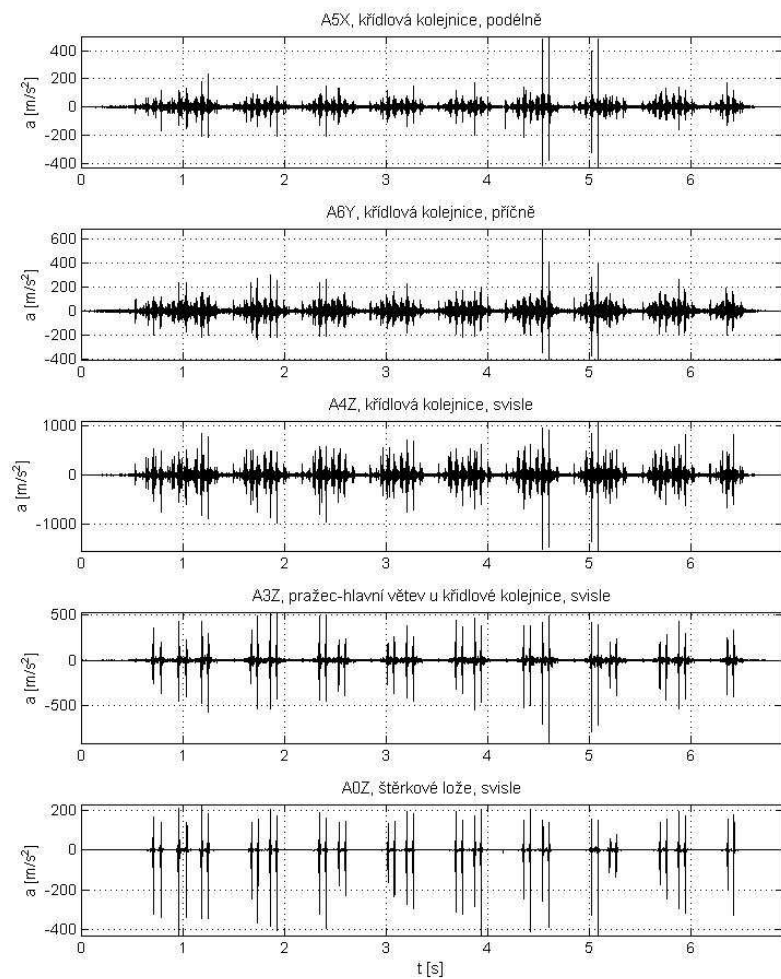
## 6. Loko 242 náklad – 33 km/h

D:\Sadleková\59\_nove\6\_Vlak\_2013\_03\_25\_124518.txt



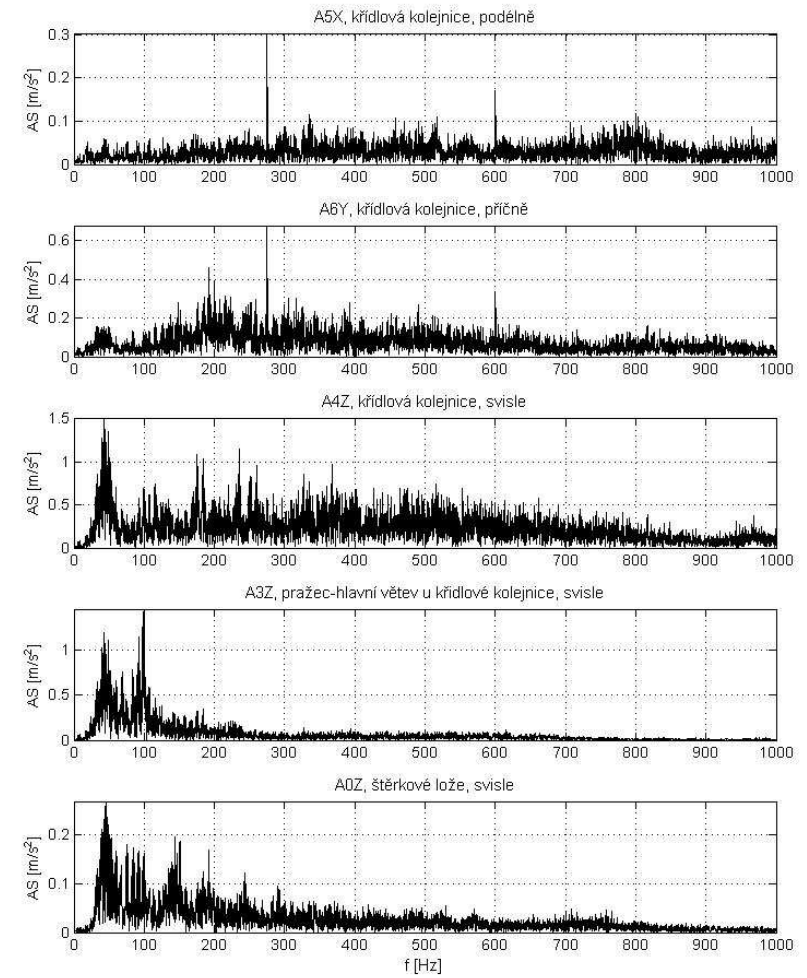
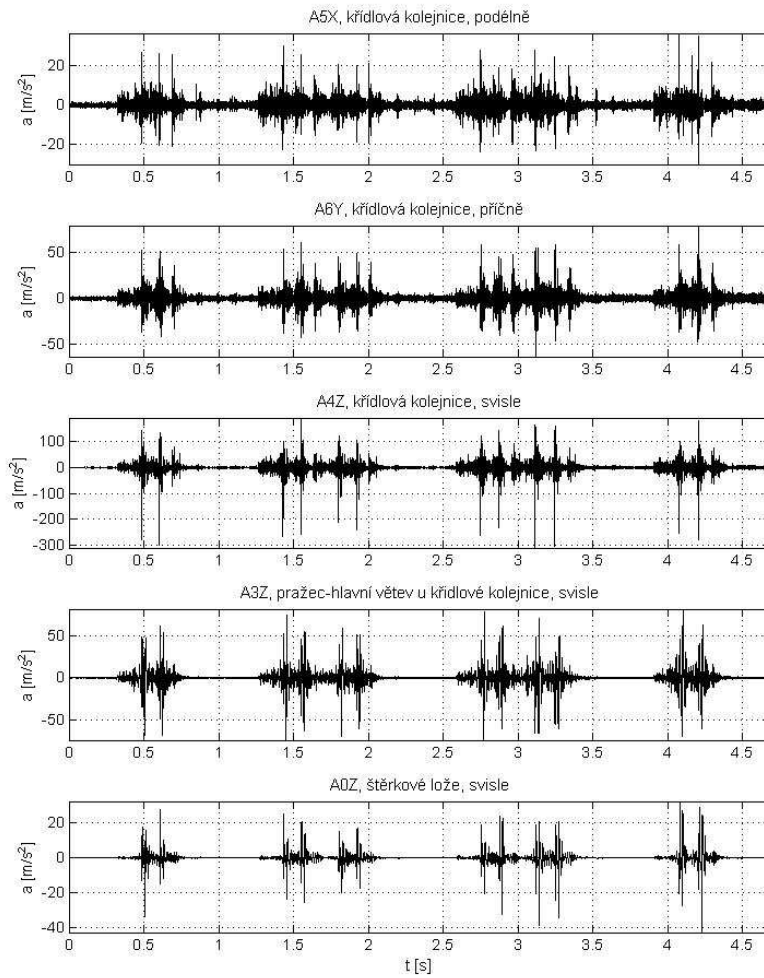
## 7. 182 Taurus – 140 km/h

D:\Sadleková\59\_nove\7\_Vlak\_2013\_03\_25\_131106.txt



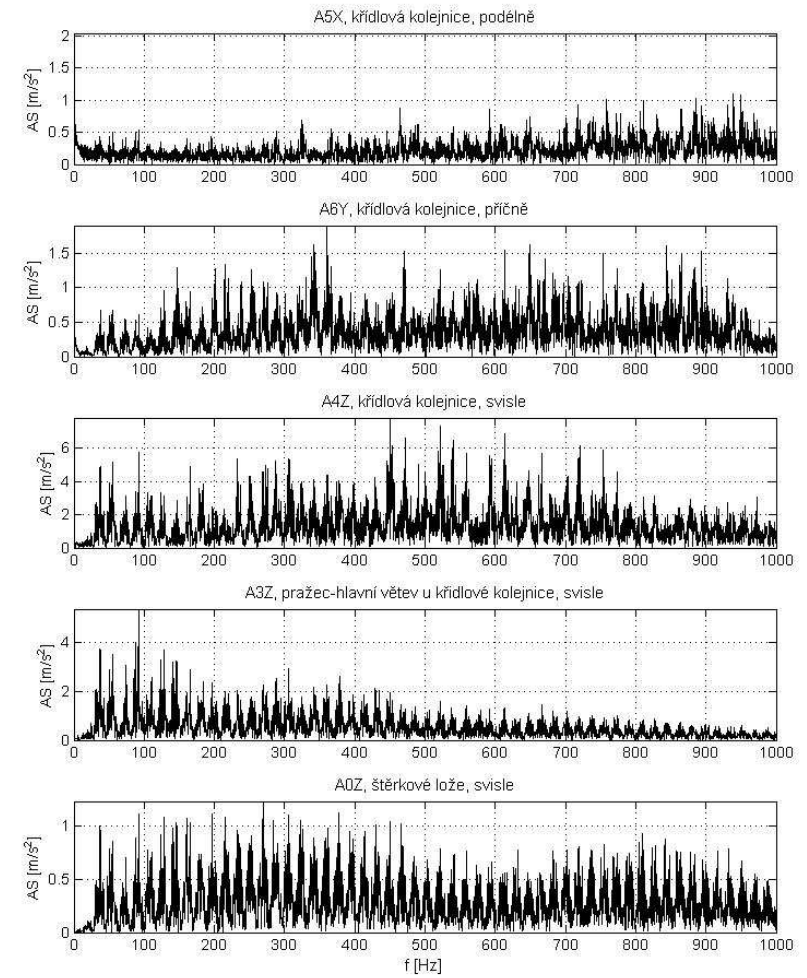
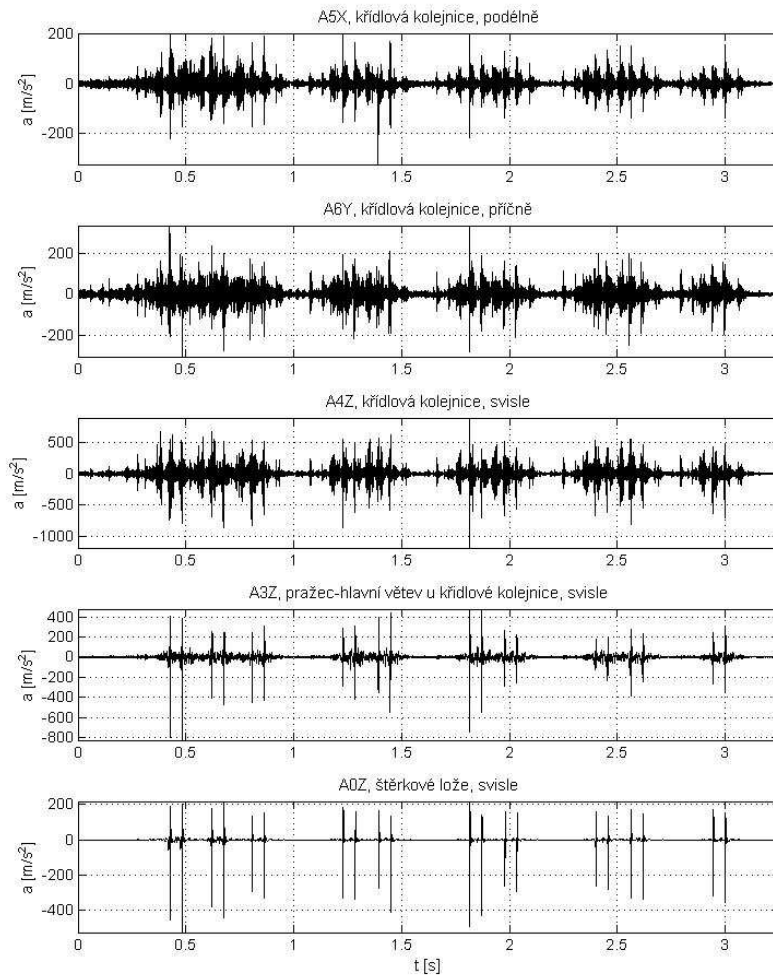
## 8. 471 City Elephant – 72 km/h

D:\Sadleková\59\_nove\8\_Vlak\_2013\_03\_25\_131715.txt



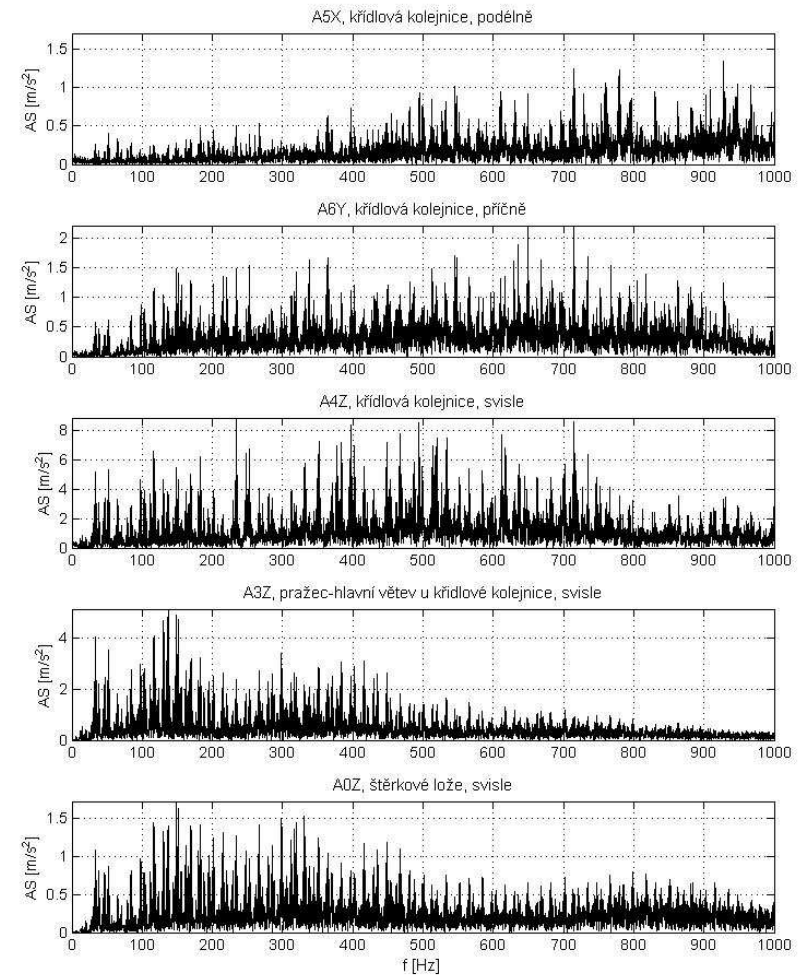
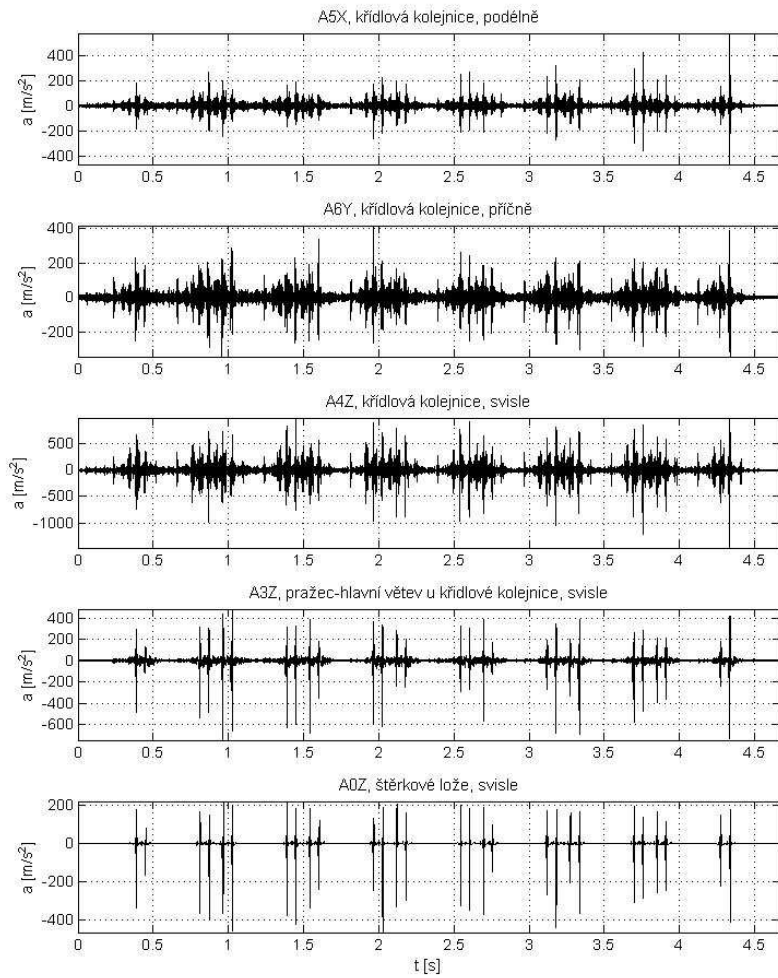
## 9. Loko 380 – 161 km/h

D:\Sadleková\59\_nove\9\_2013\_03\_25\_132308.txt



## 10. 680 Pendolino – 163 km/

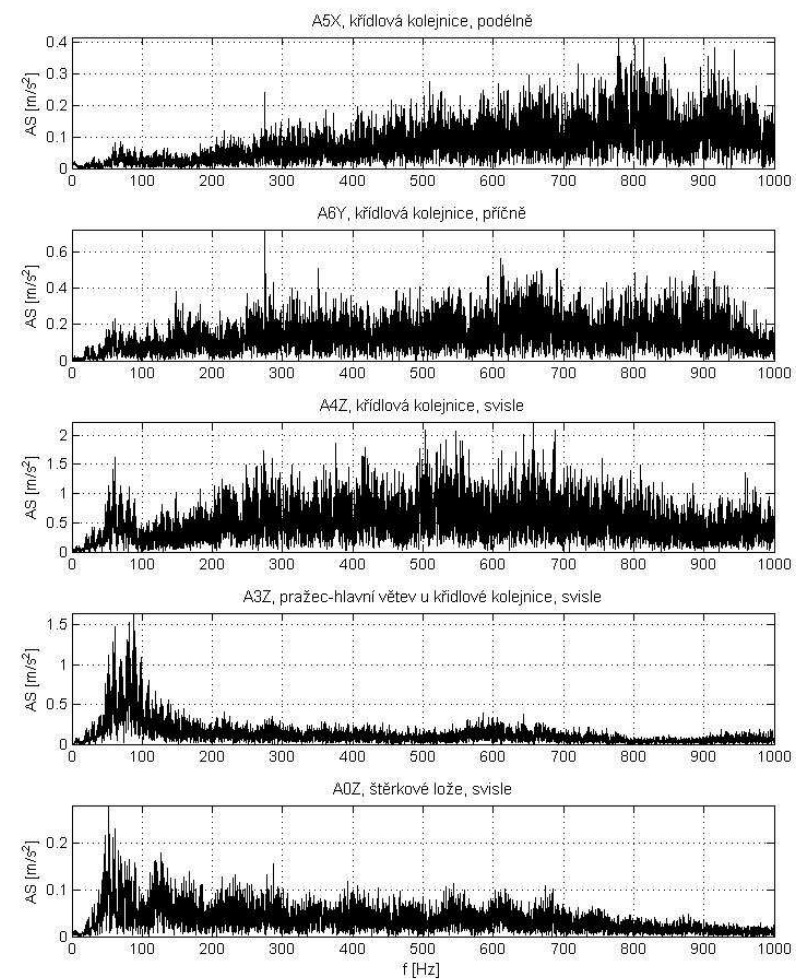
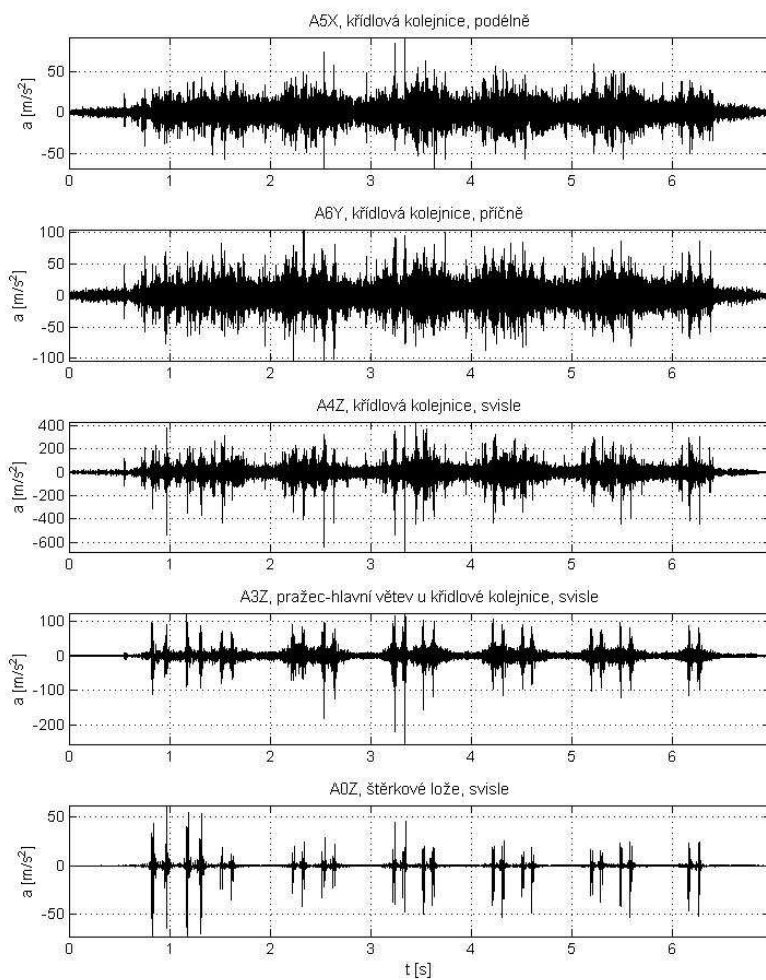
D:\Sadleková59\_nove\10\_Vlak\_2013\_03\_25\_132748.txt





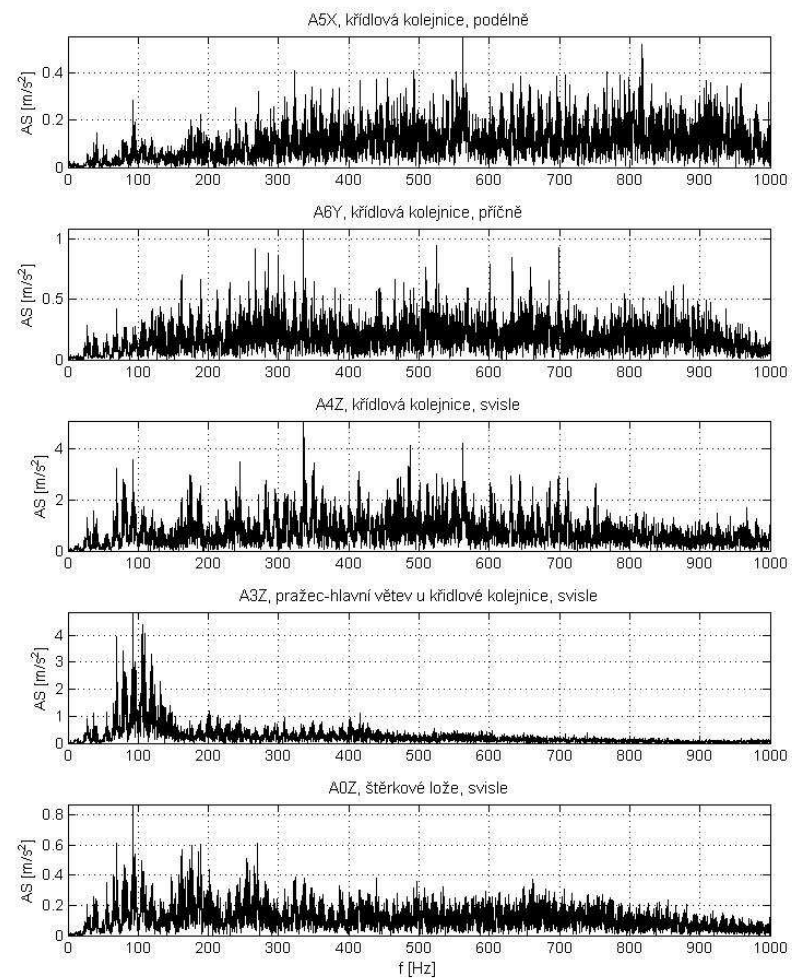
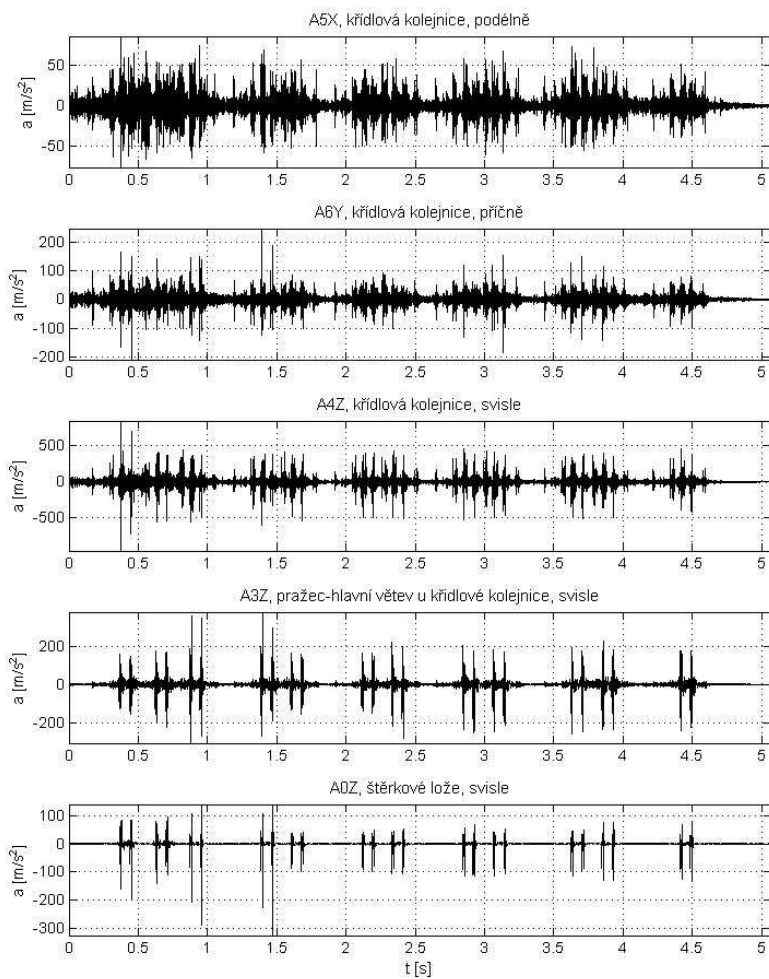
# 11. Loko 150 – 83 km/h

D:\Sadlekova\59\_nove\11\_Vlak\_2013\_03\_25\_133745.txt



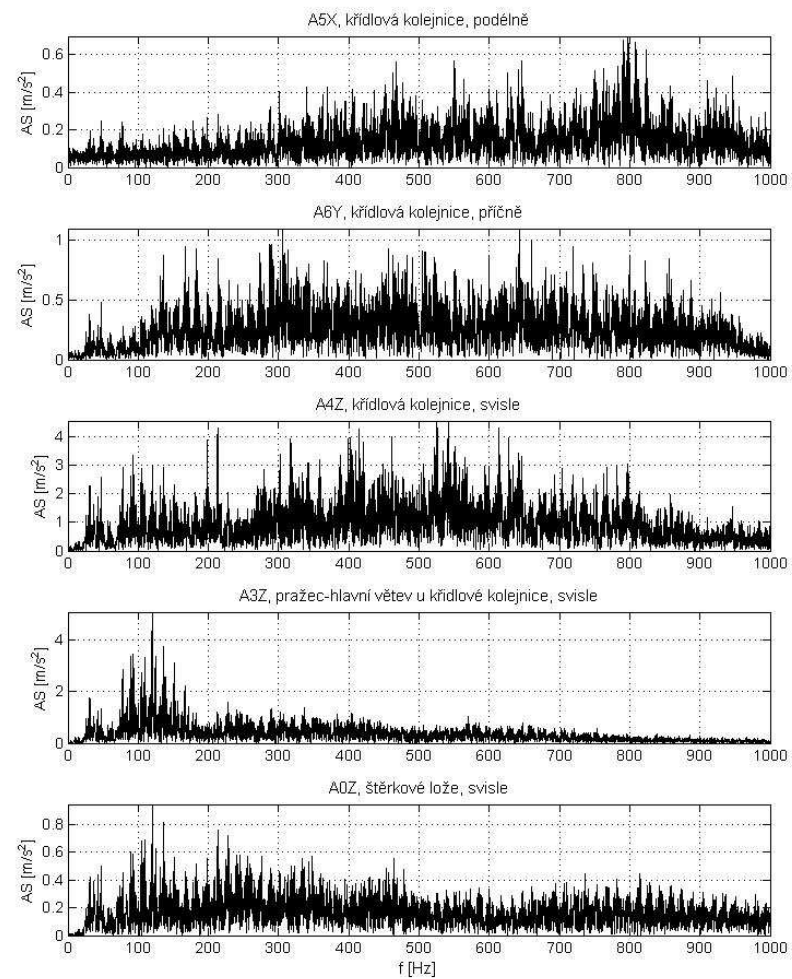
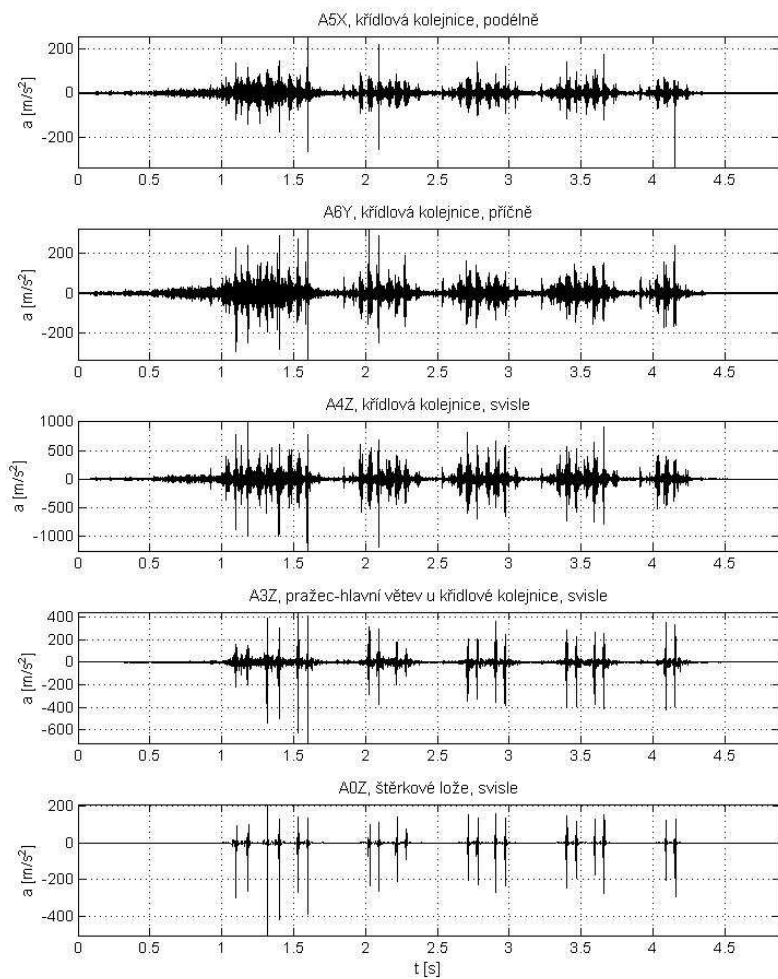
## 12. Loko 380 – 120 km/h

D:\Sadleková59\_nove\12\_Vlak\_2013\_03\_25\_135851.txt



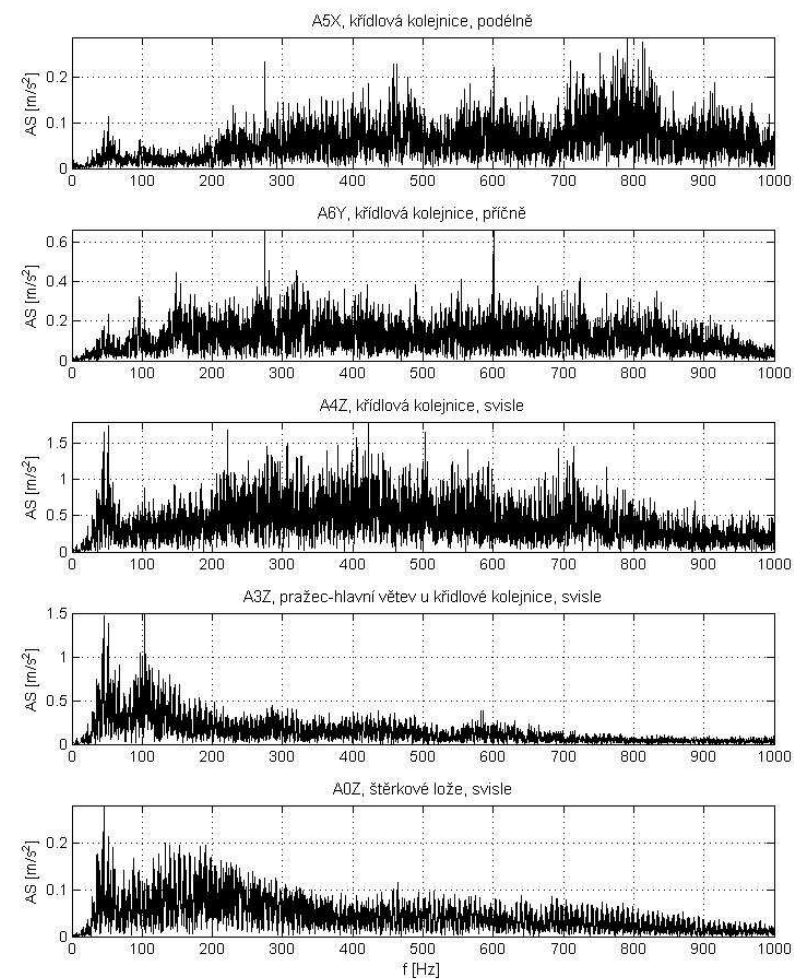
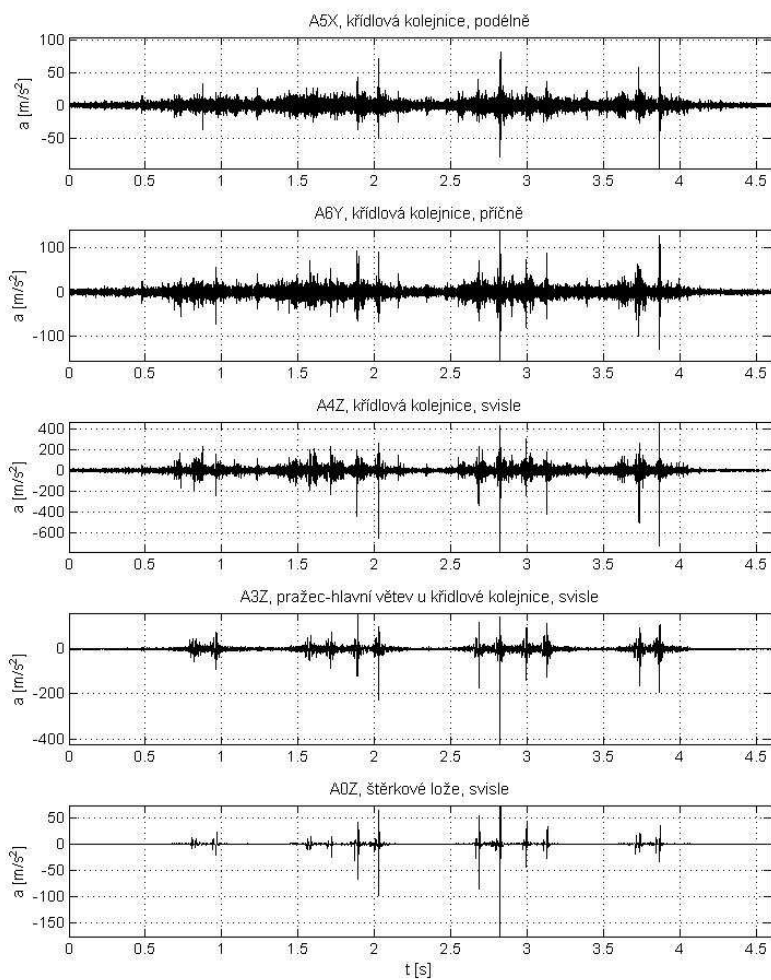
### 13. 163 Regio Jet – 139 km/h

D:\Sadleková\59\_nove\13\_Vlak\_2013\_03\_25\_140552.txt



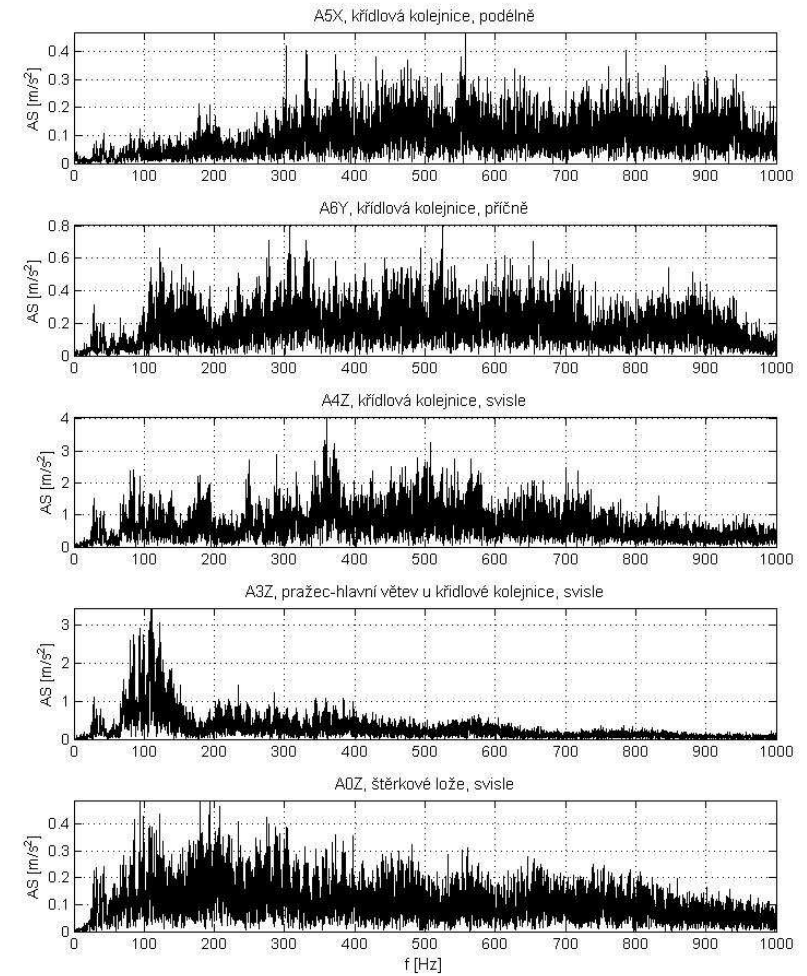
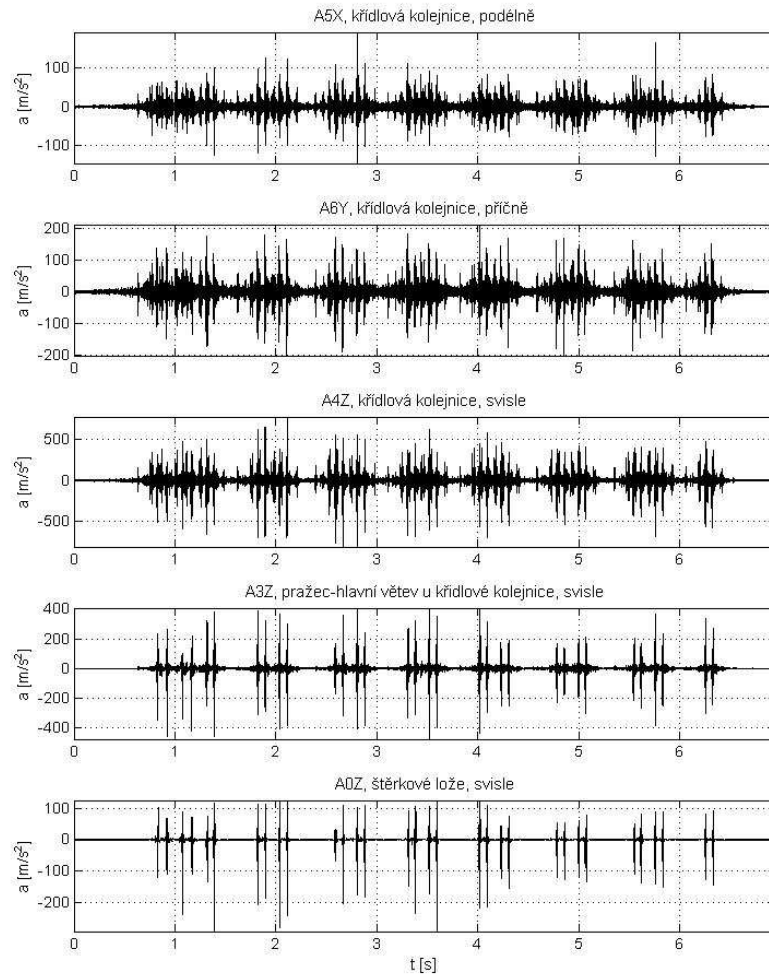
# 14. PKP EM57 – 67 km/h

D:\Sadlekova\59\_nove\14\_Vlak\_2013\_03\_25\_140824.txt



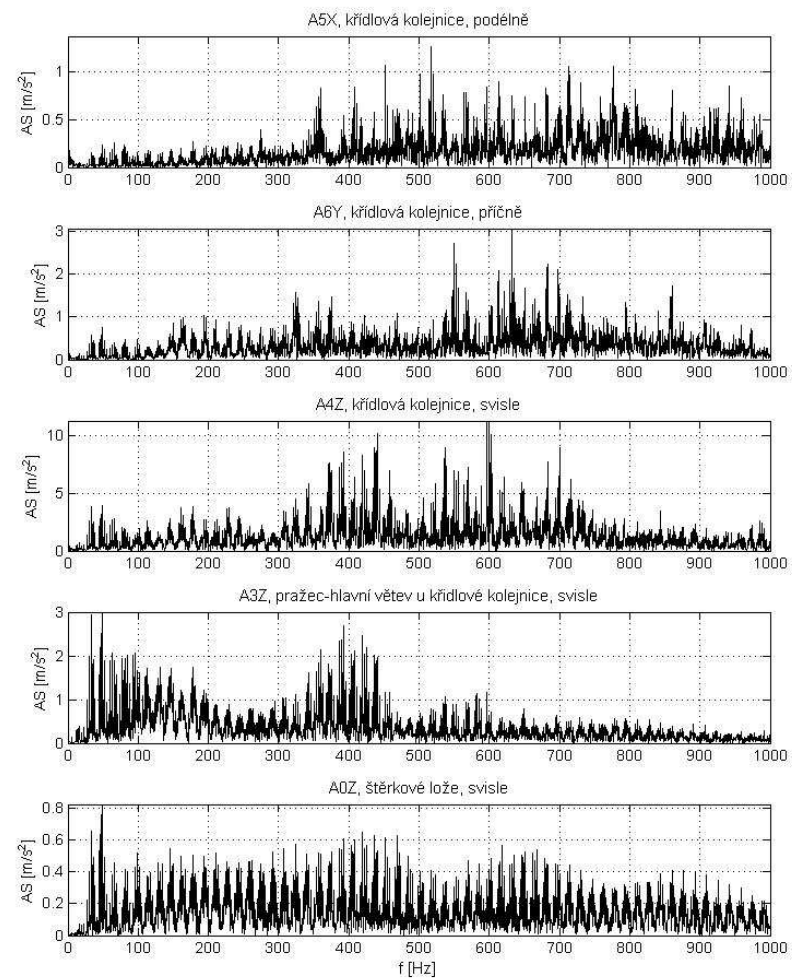
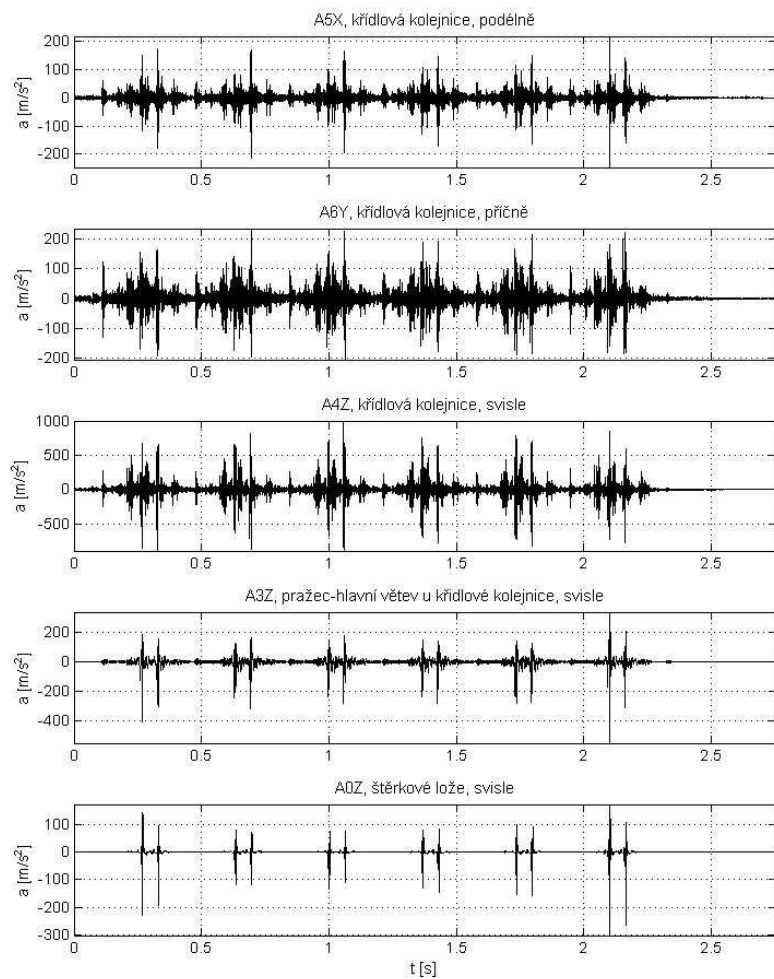
## 15. Loko 151 - 120 km/h

D:\Sadleková\59\_nove\15\_Vlak\_2013\_03\_25\_141926.txt



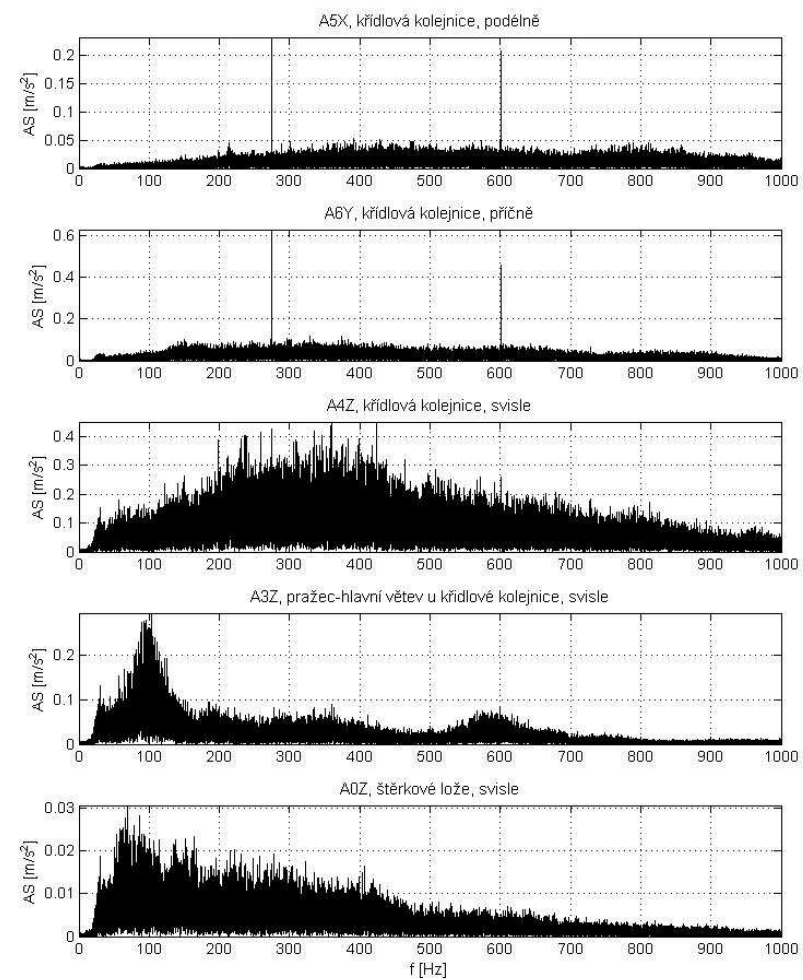
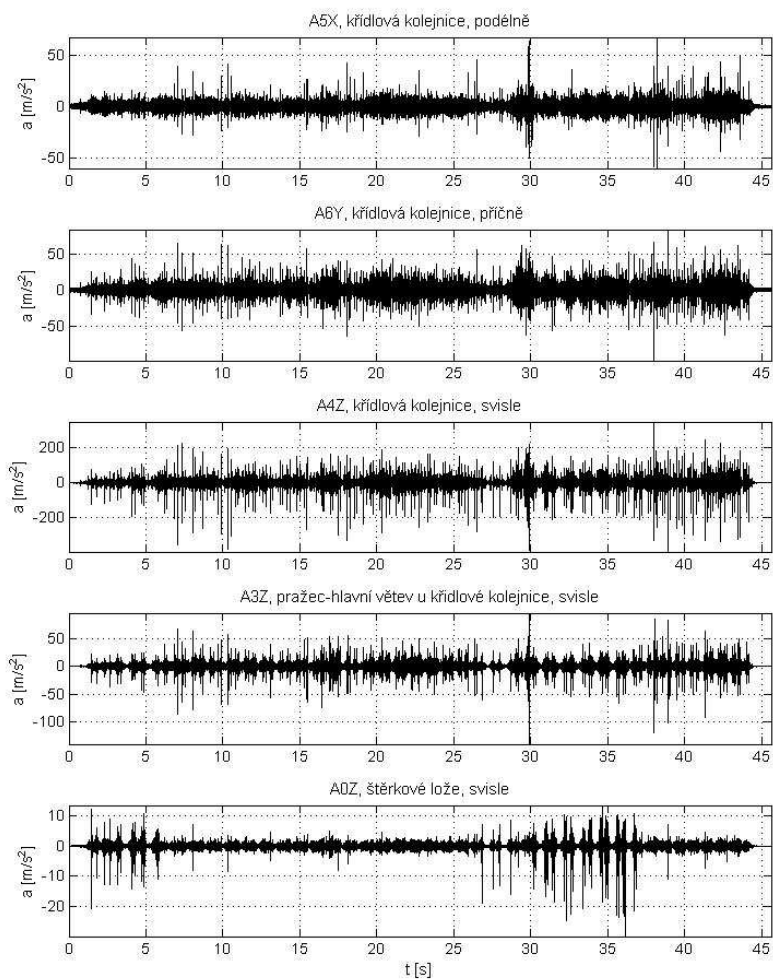
## 16. Leo Express – 156 km/h

D:\Sadleková\59\_nove\16\_Vlak\_2013\_03\_25\_142249.txt



# 17. Loko 242 náklad – 33 km/h

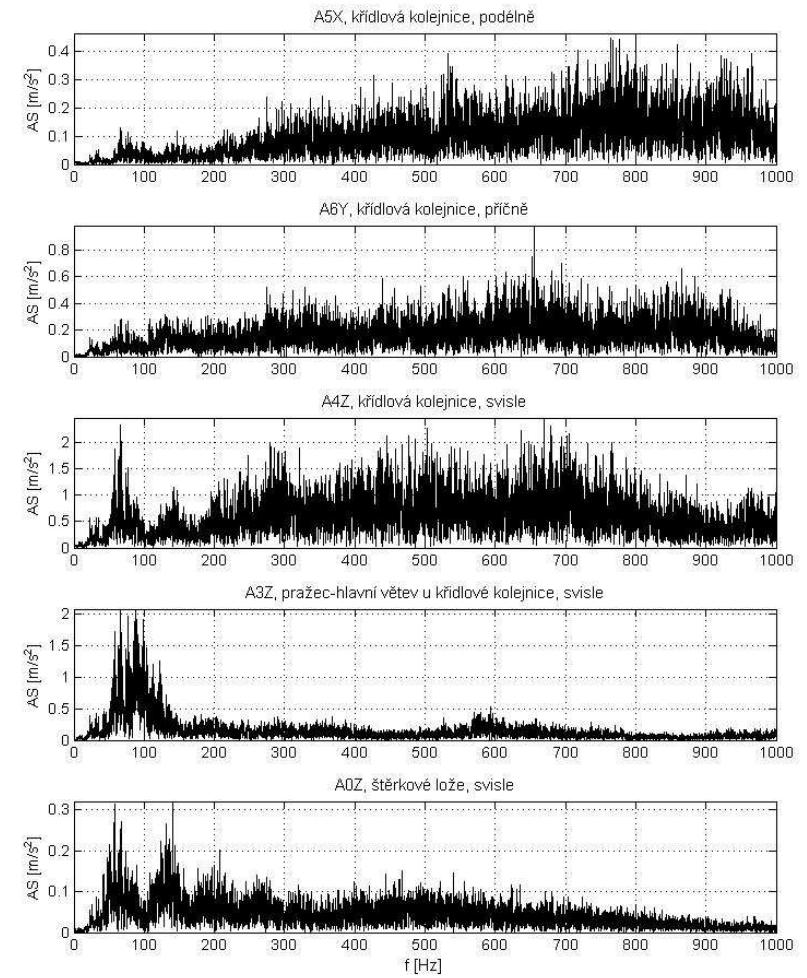
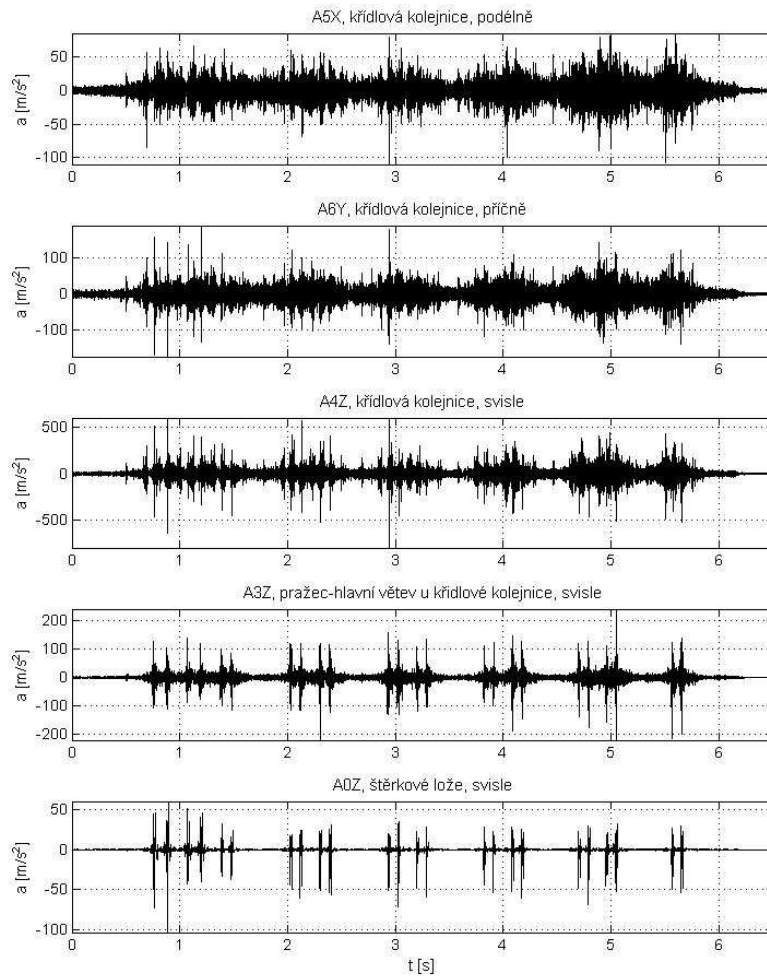
D:\Sadlekova\59\_nove\17\_Vlak\_2013\_03\_25\_142517.txt





## 18. Loko 362 – 88 km/h

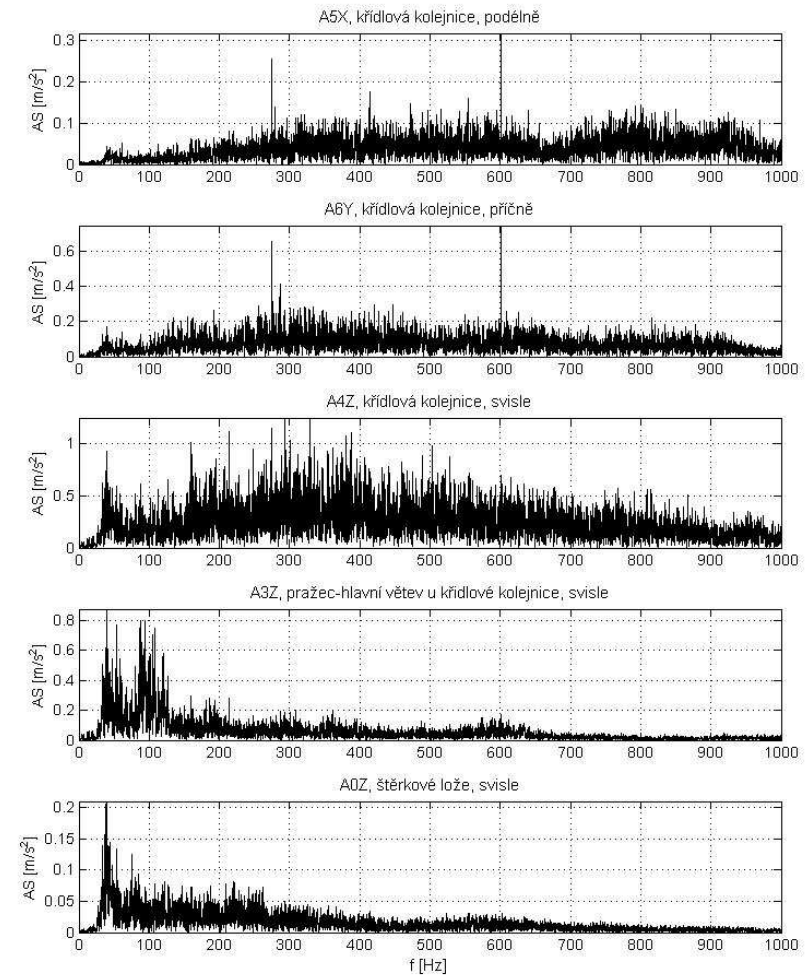
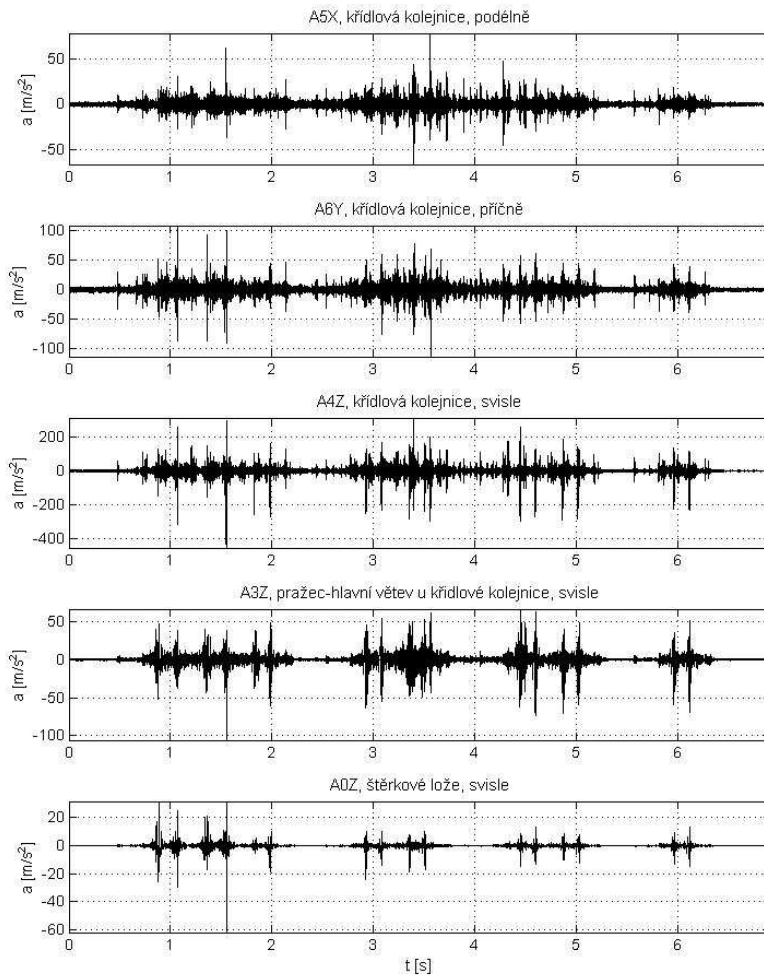
D:\Sadleková\59\_nove\18\_Vlak\_2013\_03\_25\_143856.txt





## 19. Loko 163 Os – 61 km/h

D:\Sadleková\59\_nove\19\_2013\_03\_25\_144047.txt



## 20. Loko 363 – náklad 40 km/h

D:\Sadleková\59\_nove\20\_2013\_03\_25\_144314.txt

