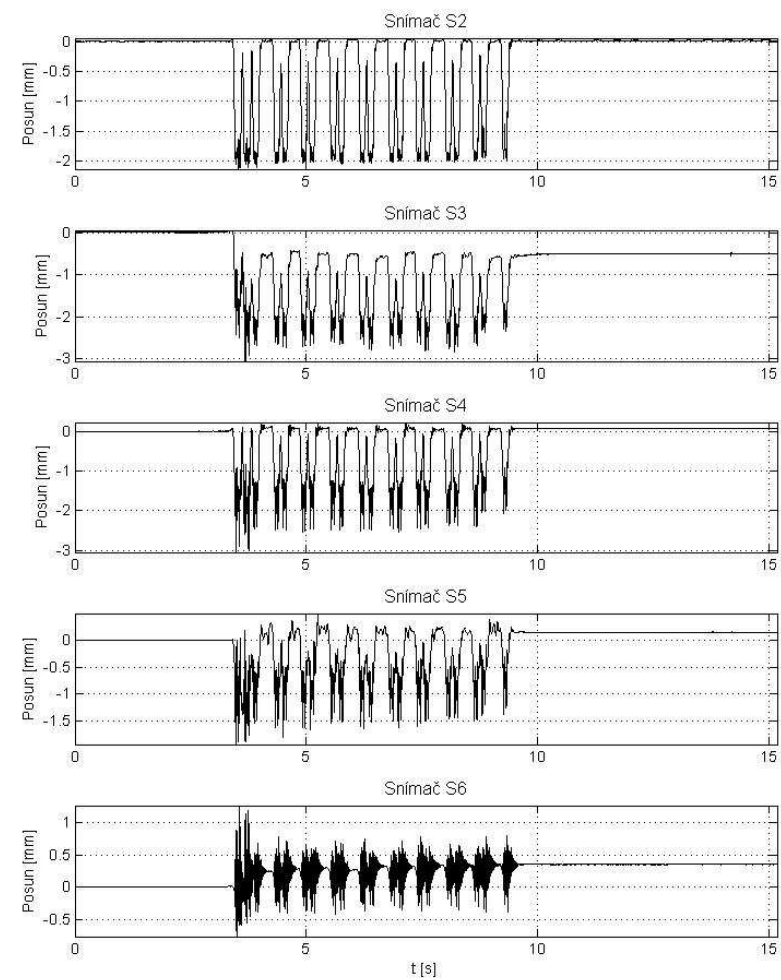
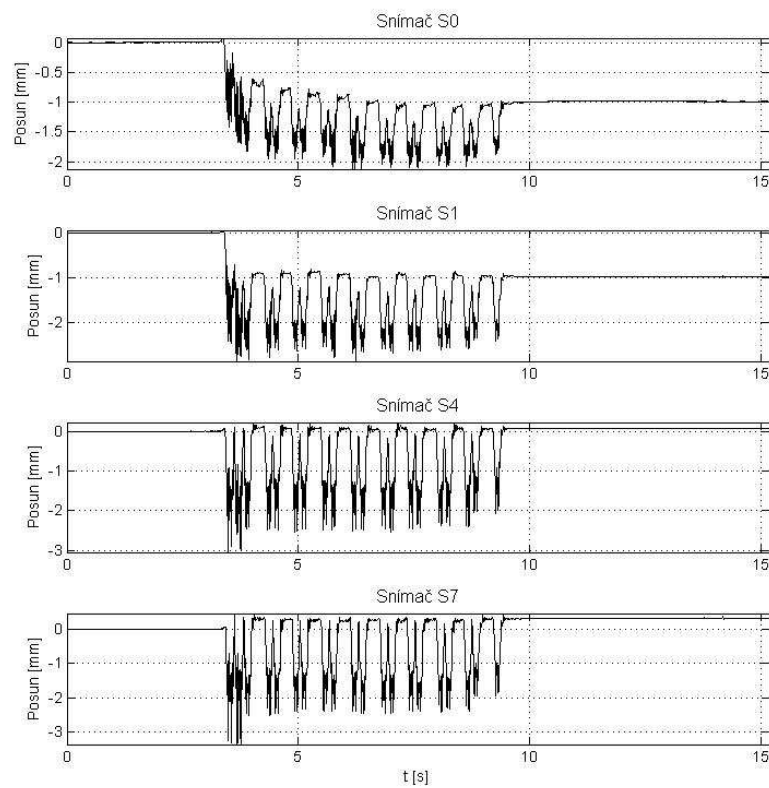


# **PŘÍLOHA B**

*Analýza posunů na výhybce č. 63*

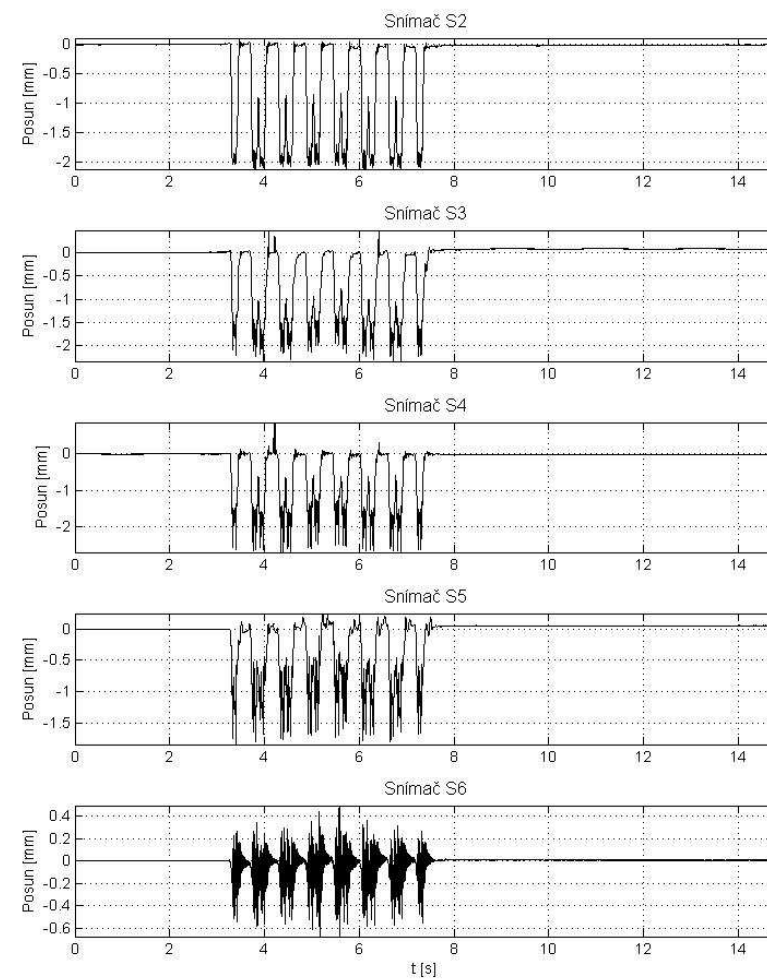
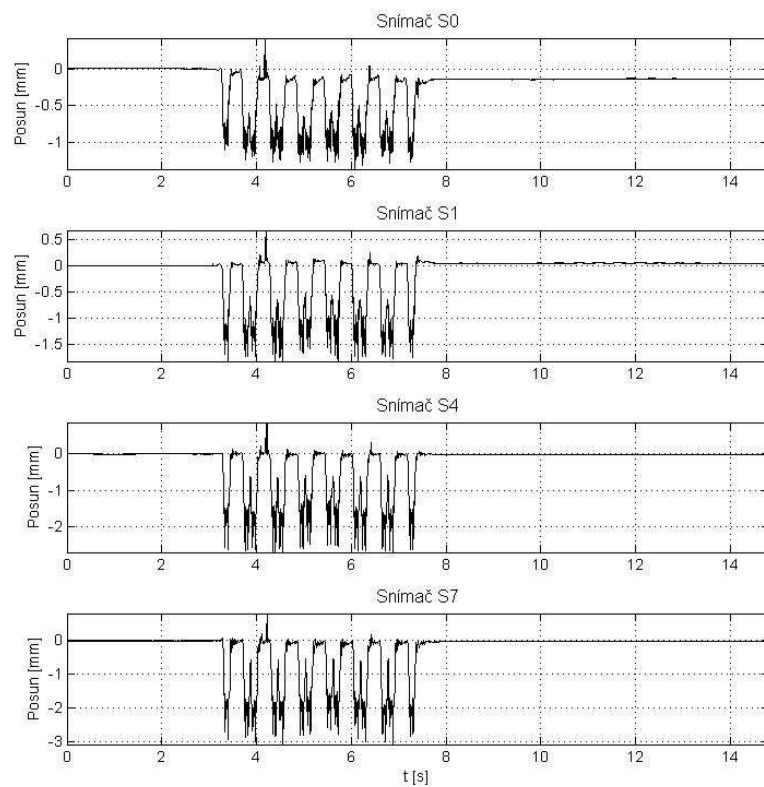
# 1. Loko 151 – 151 km/h

I:\6311\_Vlak\_2013\_04\_08\_104234.txt



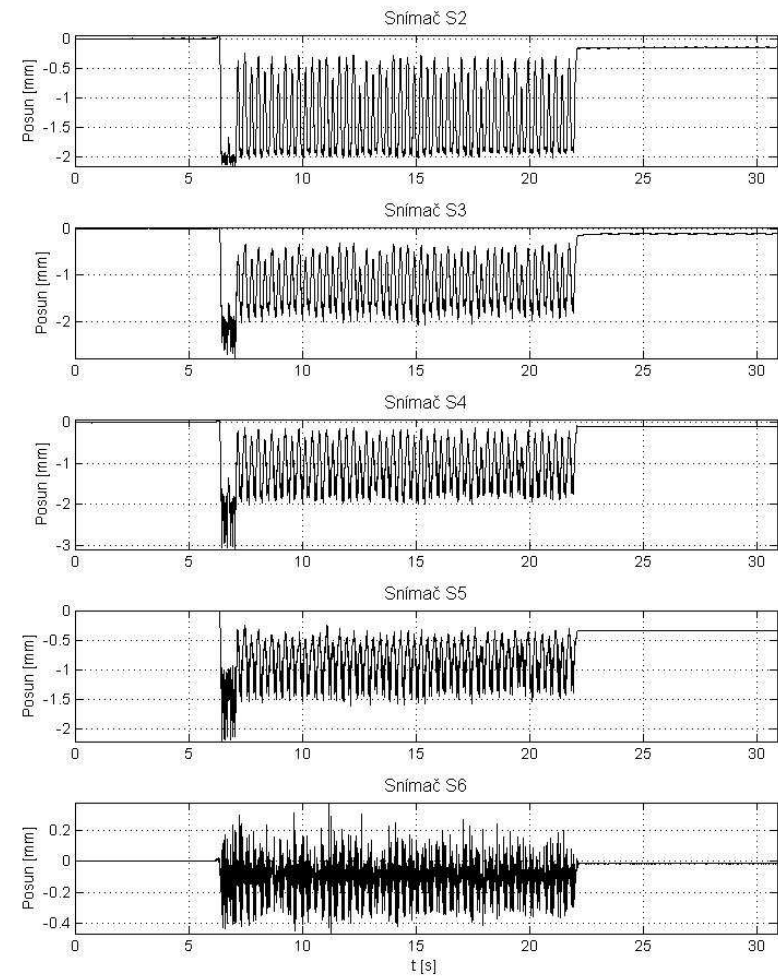
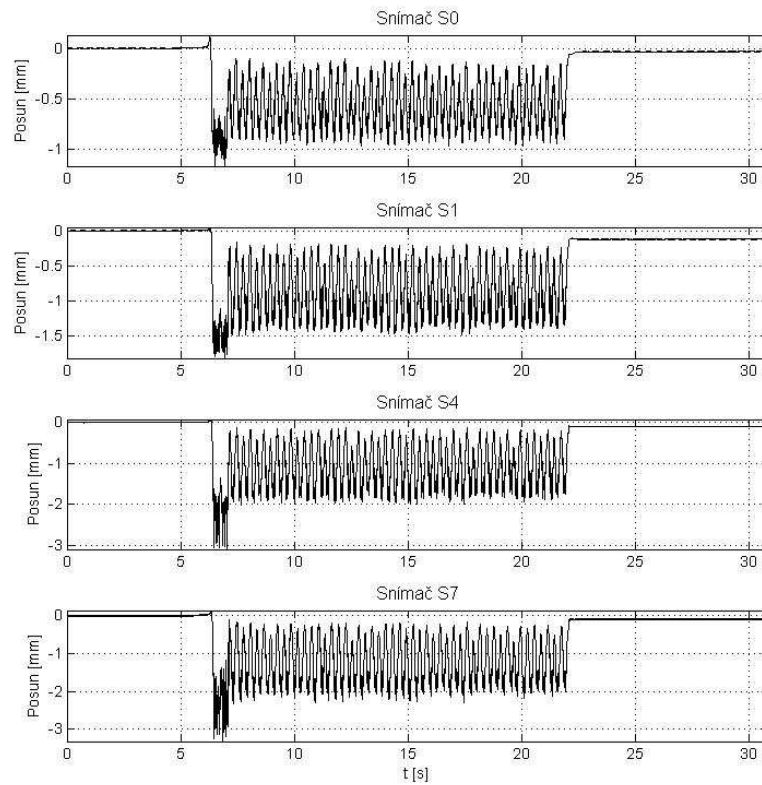
## 2. 680 Pendolino – 160 km/h

I:\63\2\_Vlak\_2013\_04\_08\_104636.txt



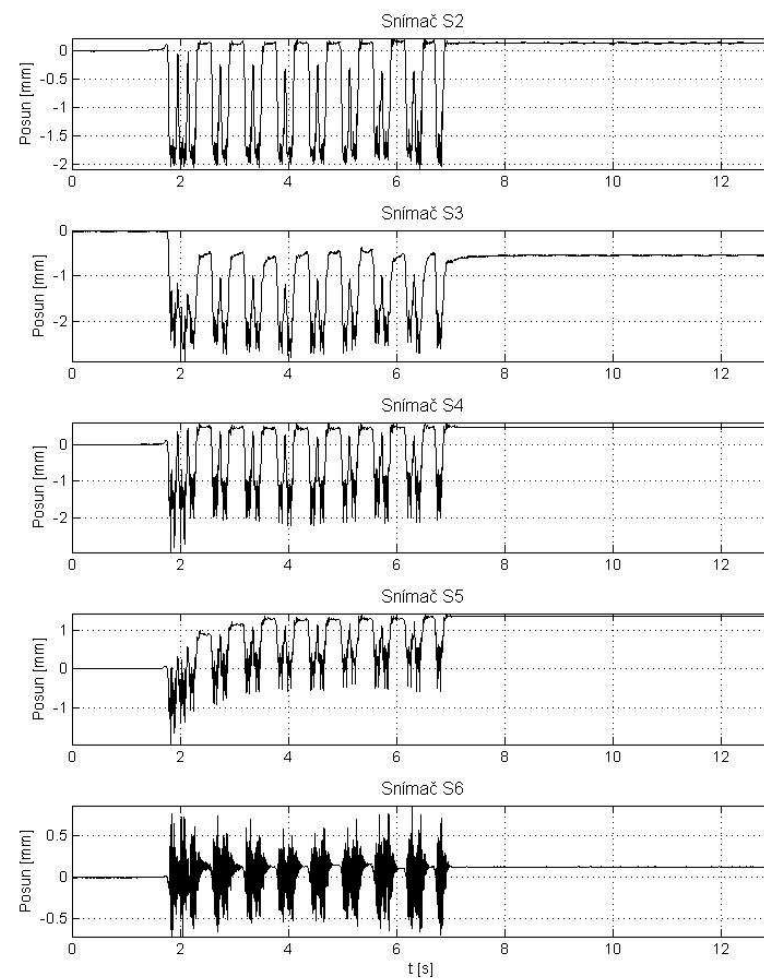
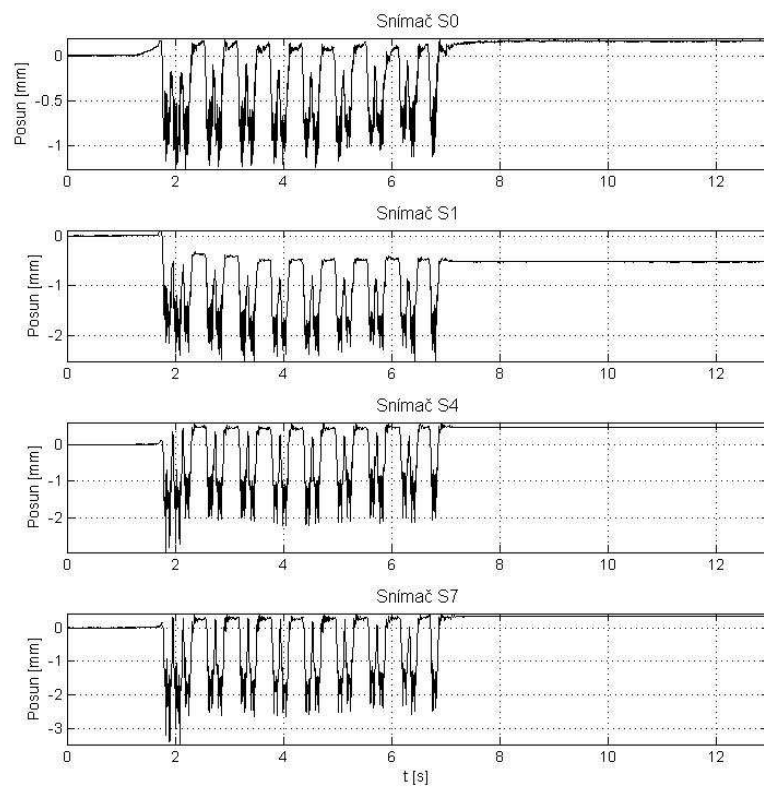
### 3. Loko 181 náklad – 80 km/h

I:\63\3\_Vlak\_2013\_04\_08\_105358.txt



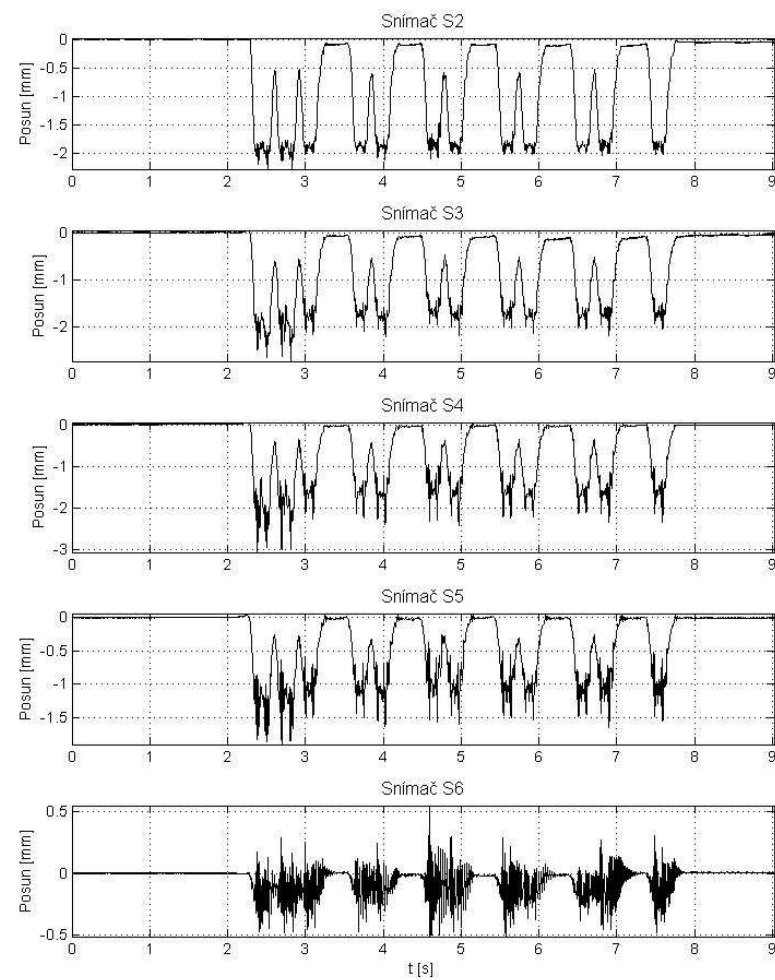
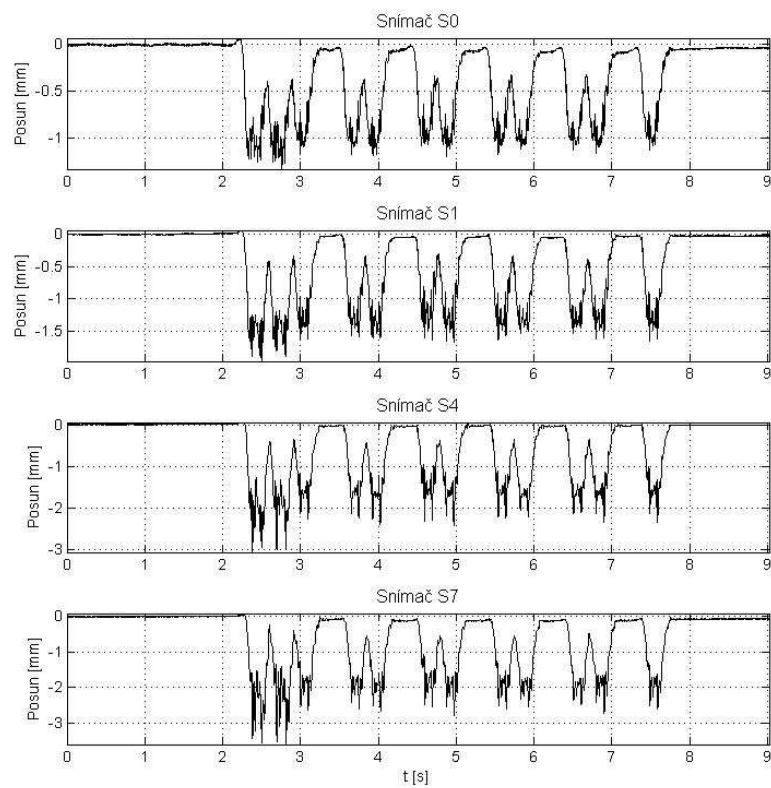
#### 4. Loko 350 – 150 km/h

I:\634\_Vlak\_2013\_04\_08\_110704.txt



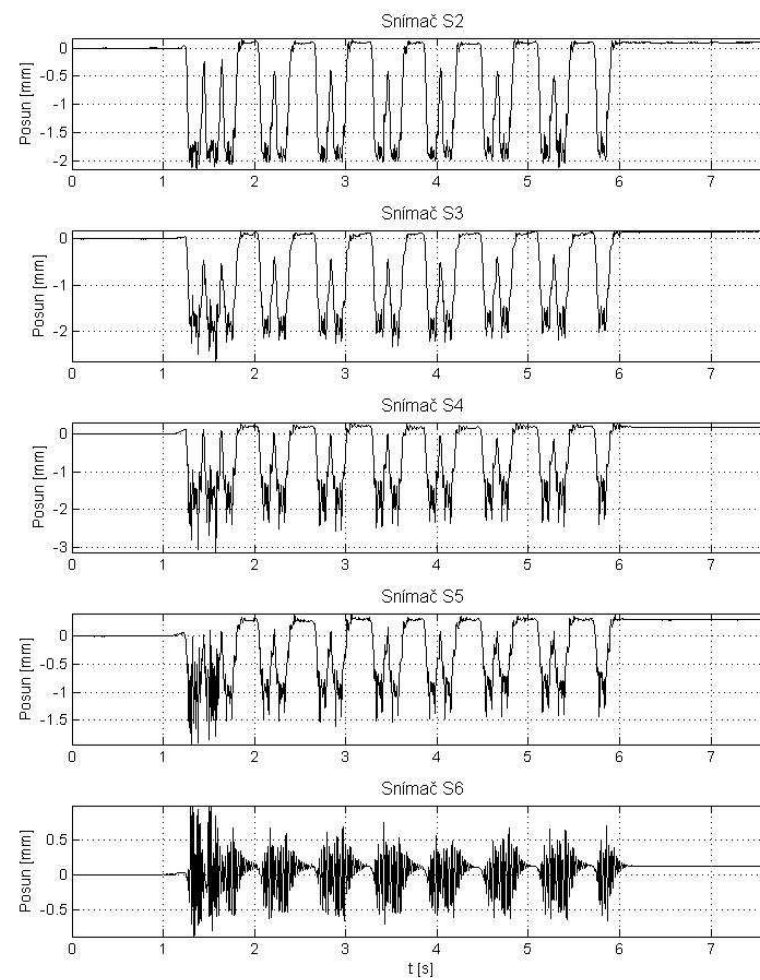
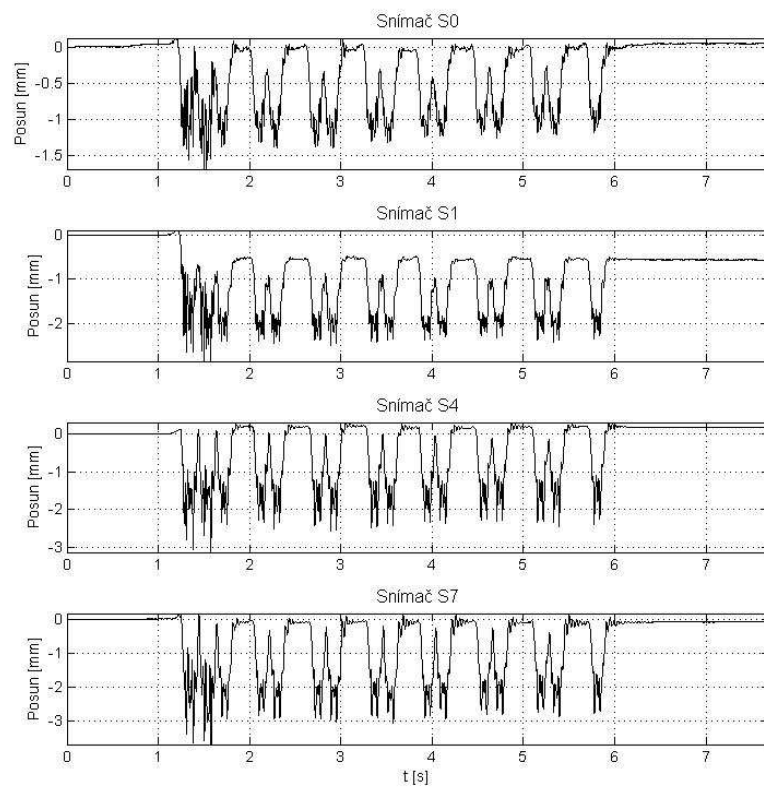
## 5. Loko 363 – 90 km/h

I:\63\5\_Vlak\_2013\_04\_08\_112246.txt



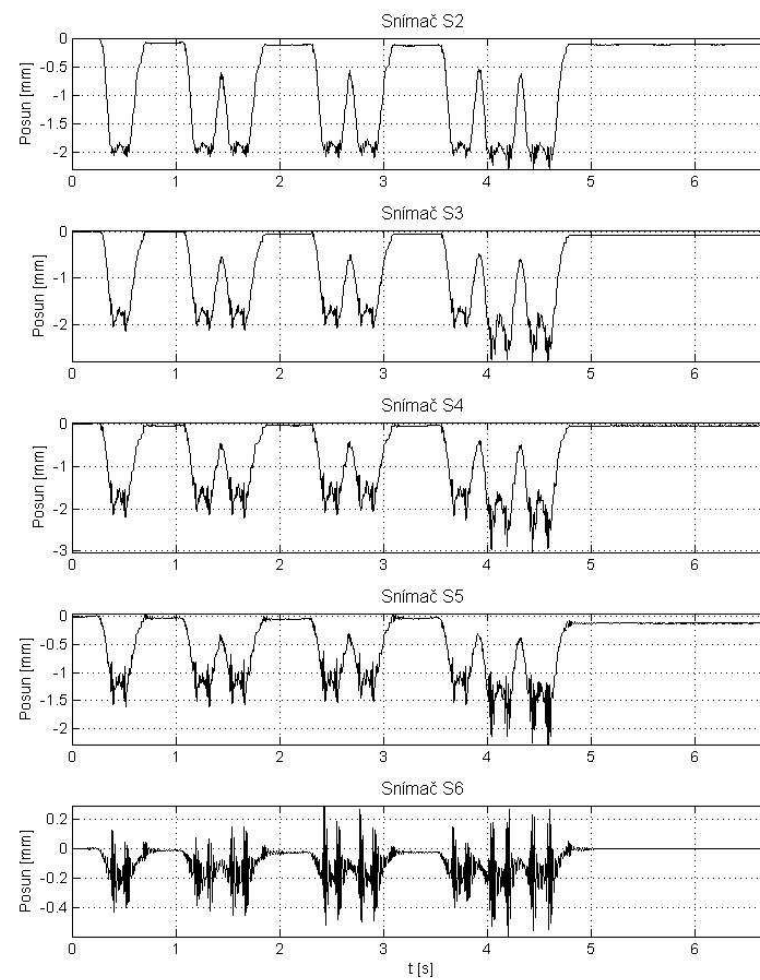
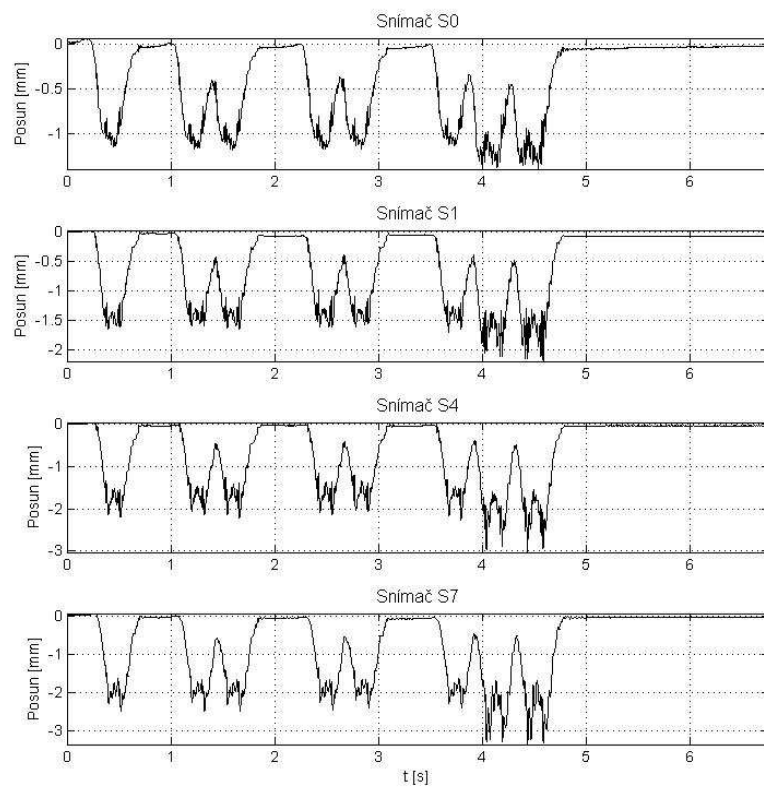
## 6. Loko 151 – 152 km/h

I:\63\6\_Vlak\_2013\_04\_08\_114134.txt



## 7. Ř.V. 80 + 163 – 80 km/h

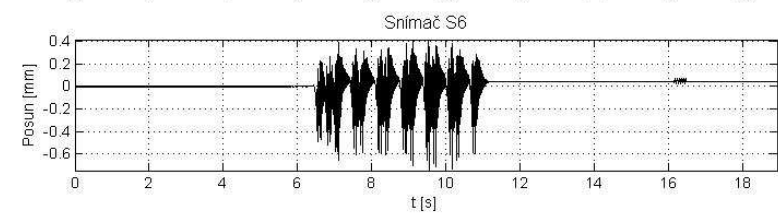
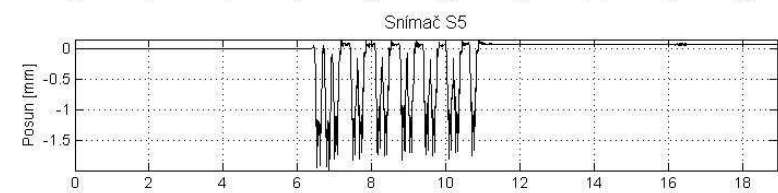
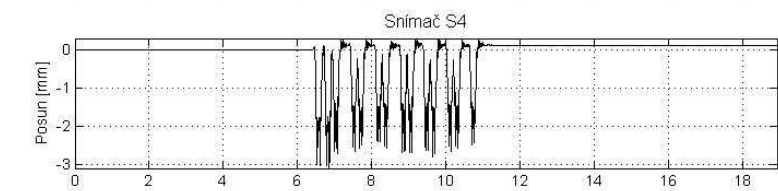
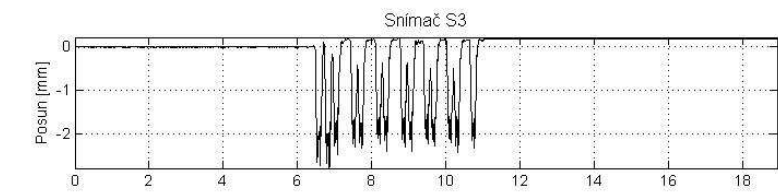
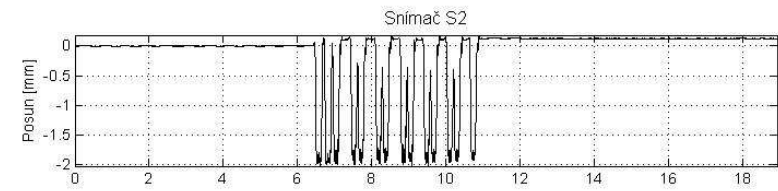
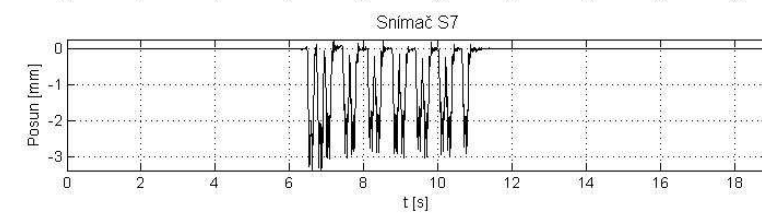
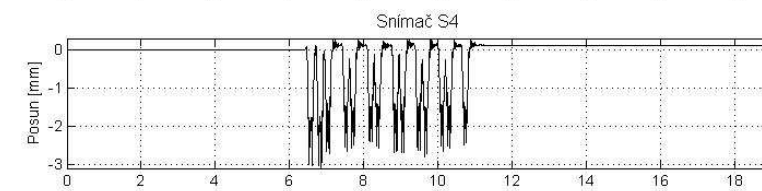
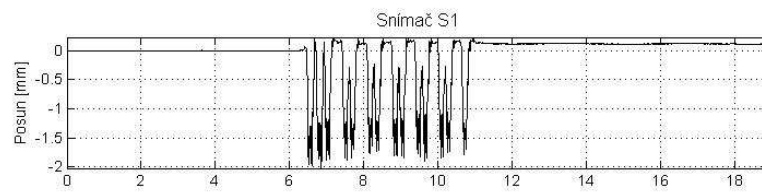
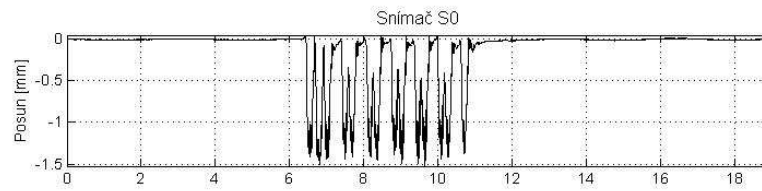
I:\63\7\_Vlak\_2013\_04\_08\_115011.txt





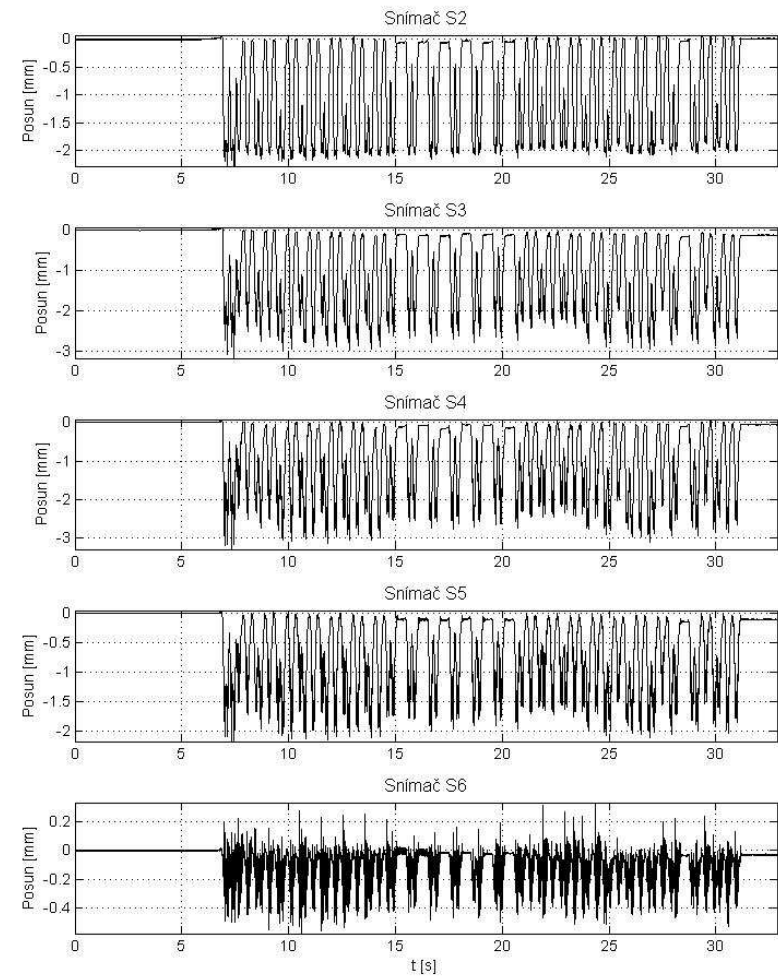
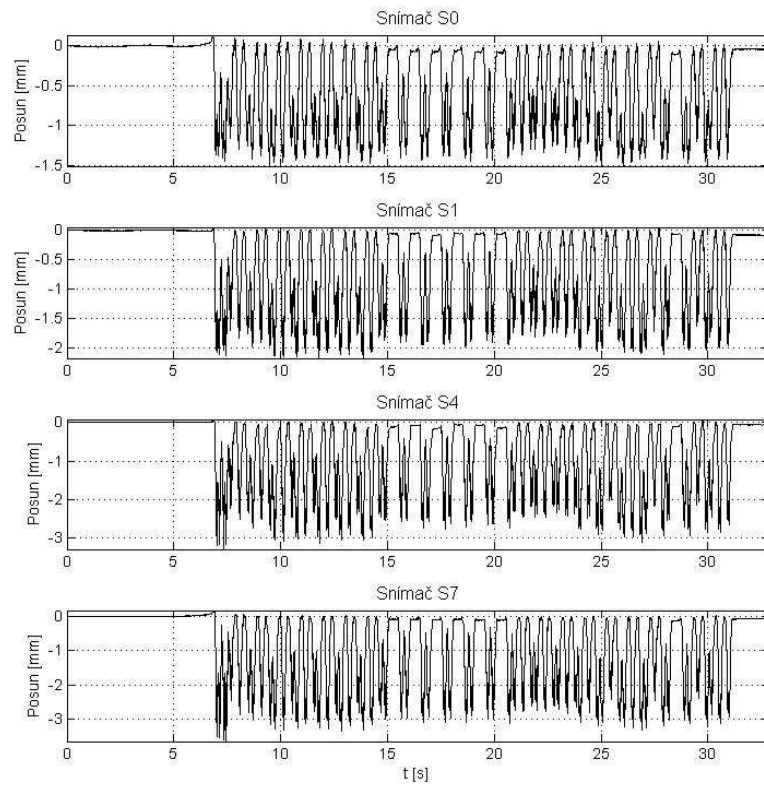
## 8. 182 Taurus – 145 km/h

I:\63\8\_Vlak\_2013\_04\_08\_115900.txt



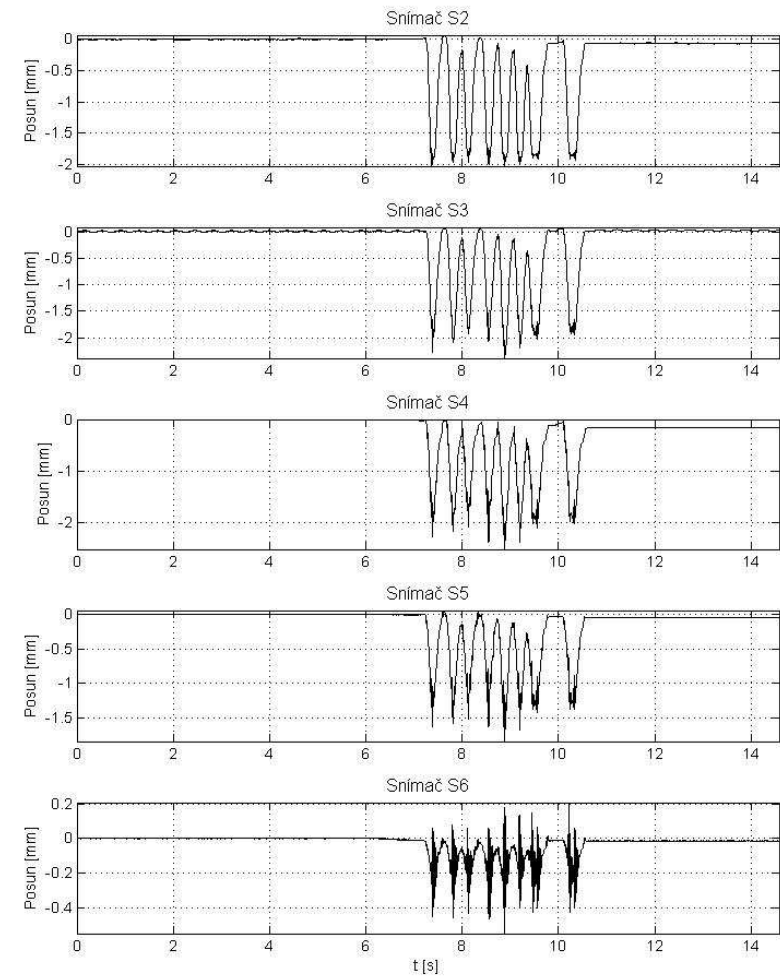
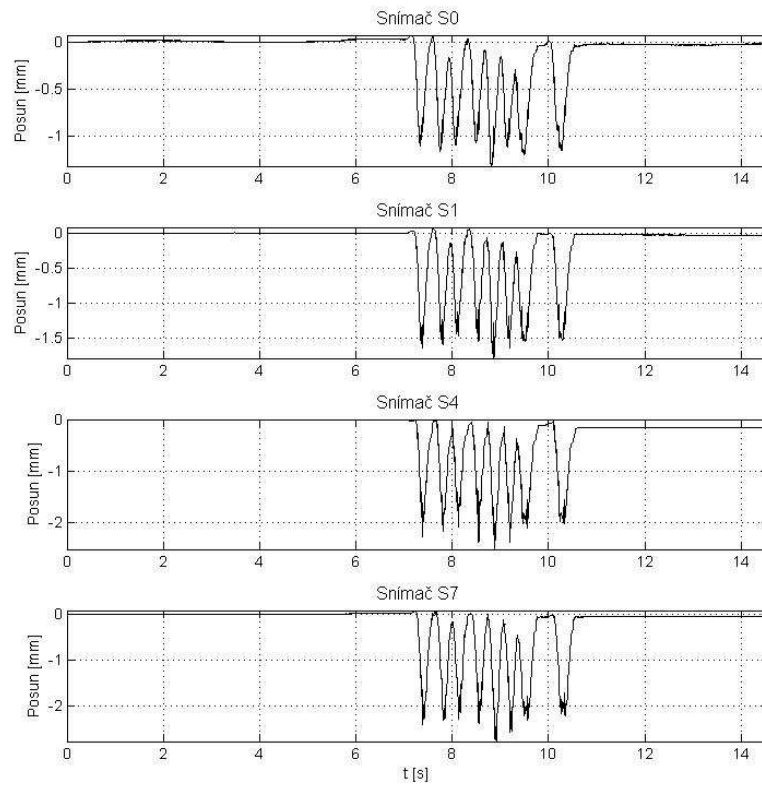
## 9. Loko 363 náklad – 93 km/h

I:\6319\_Vlak\_2013\_04\_08\_120546.txt



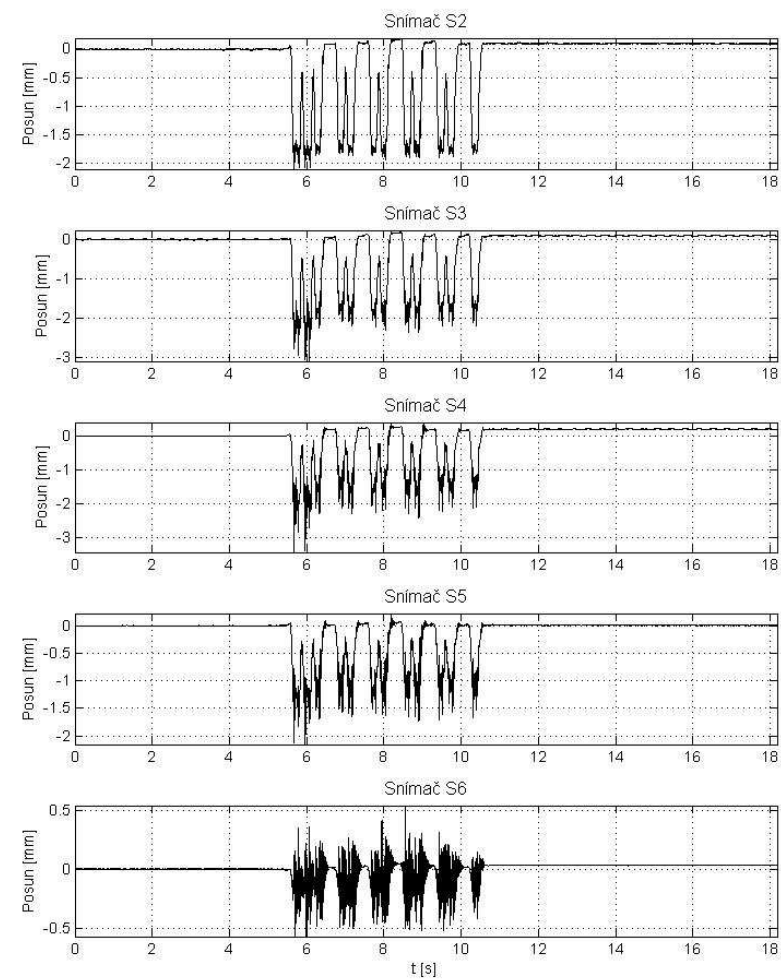
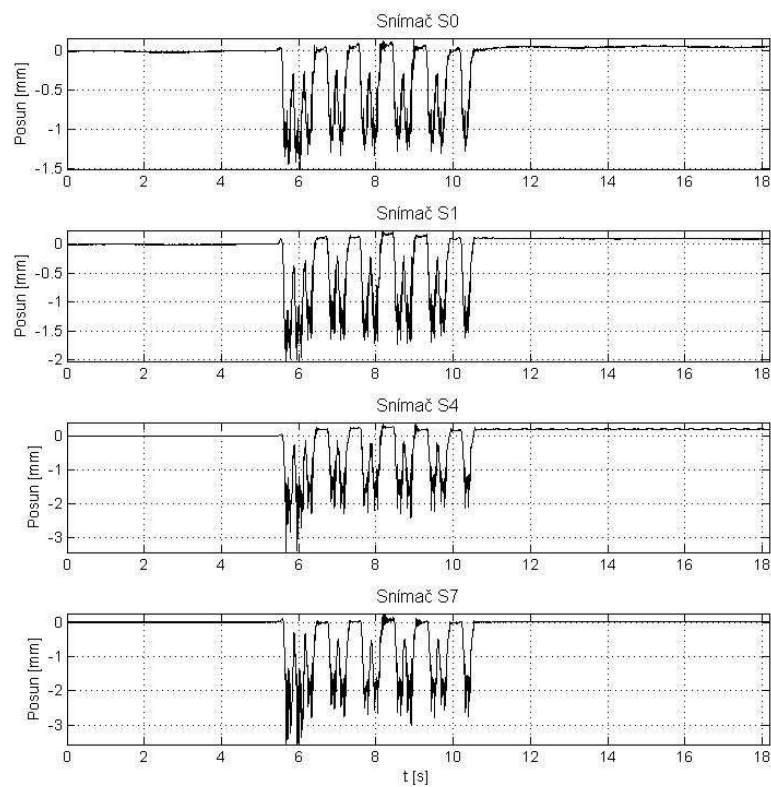
## 10. MTVT + prac. Stroje – 68 km/h

I:\63\10\_Vlak\_2013\_04\_08\_121034.txt



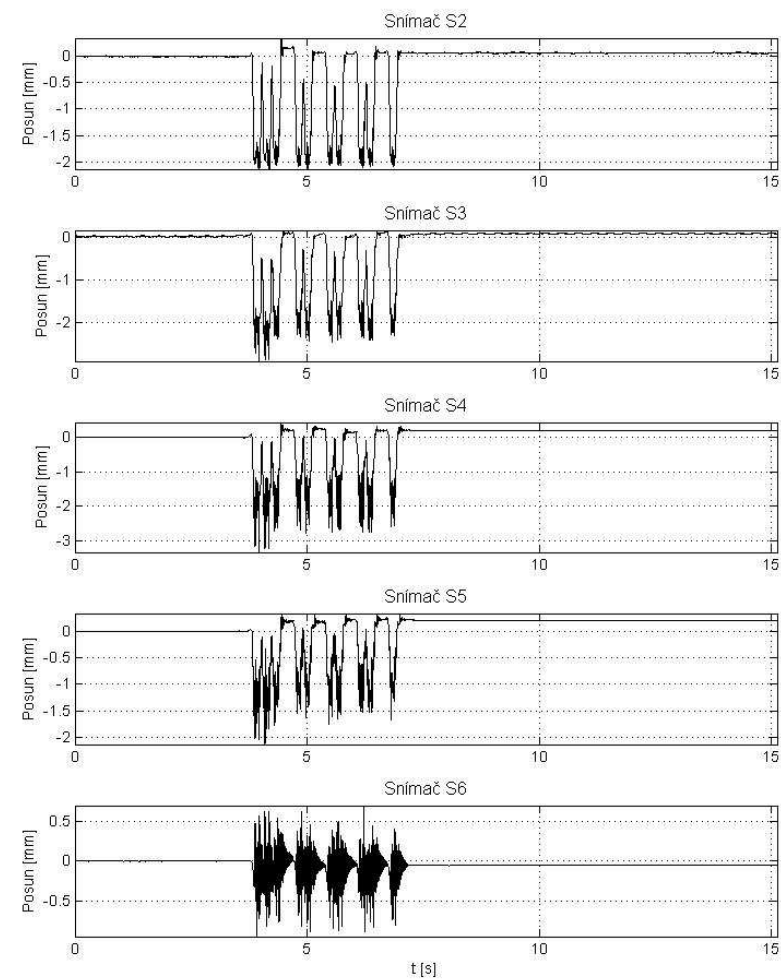
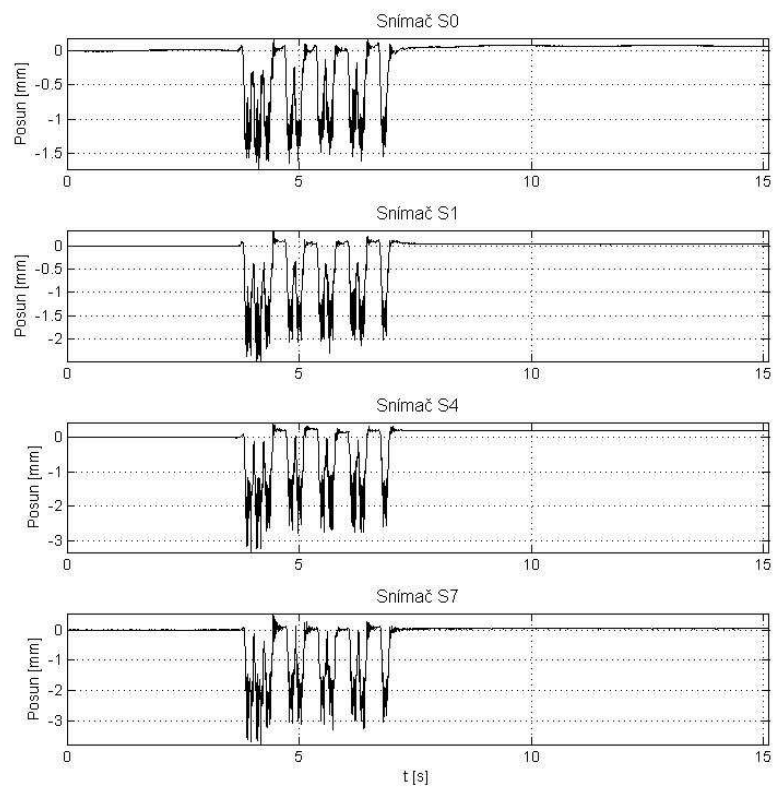
## 11. Loko 150 – 107 km/h

I:\63\11\_Vlak\_2013\_04\_08\_121953.txt



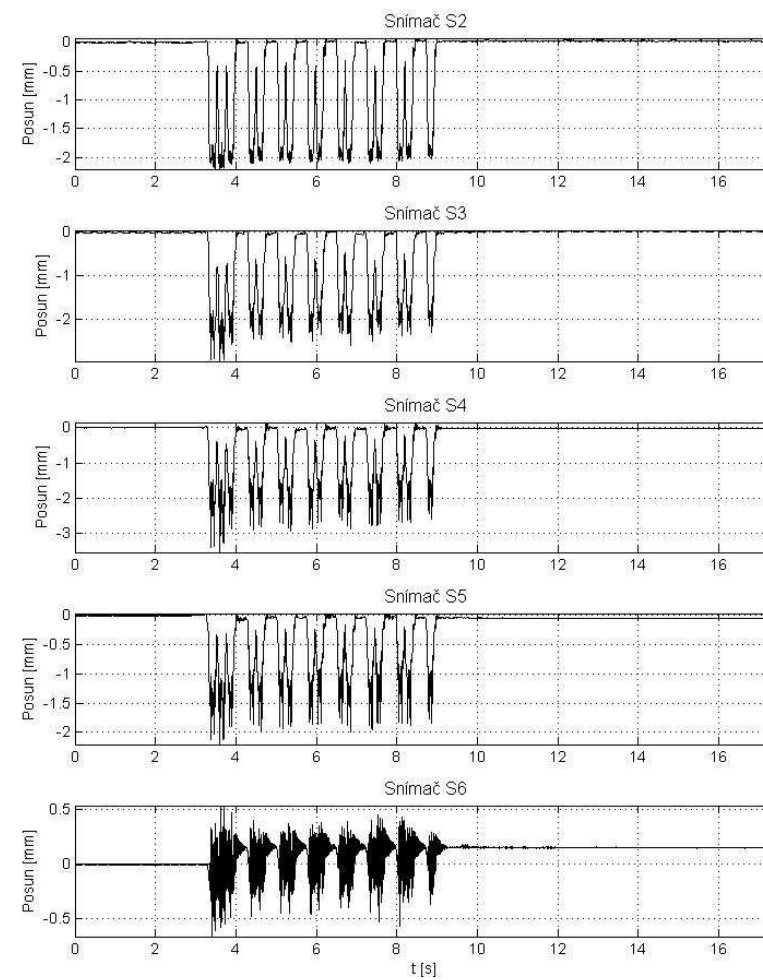
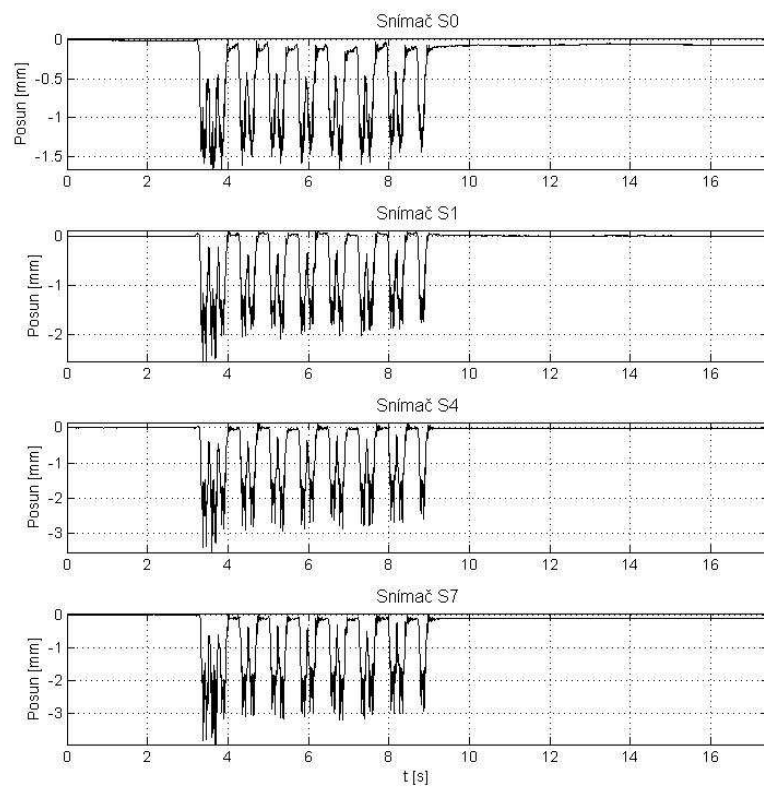
## 12. Loko 363 – 128 km/h

I:\63\12\_Vlak\_2013\_04\_08\_123213.txt



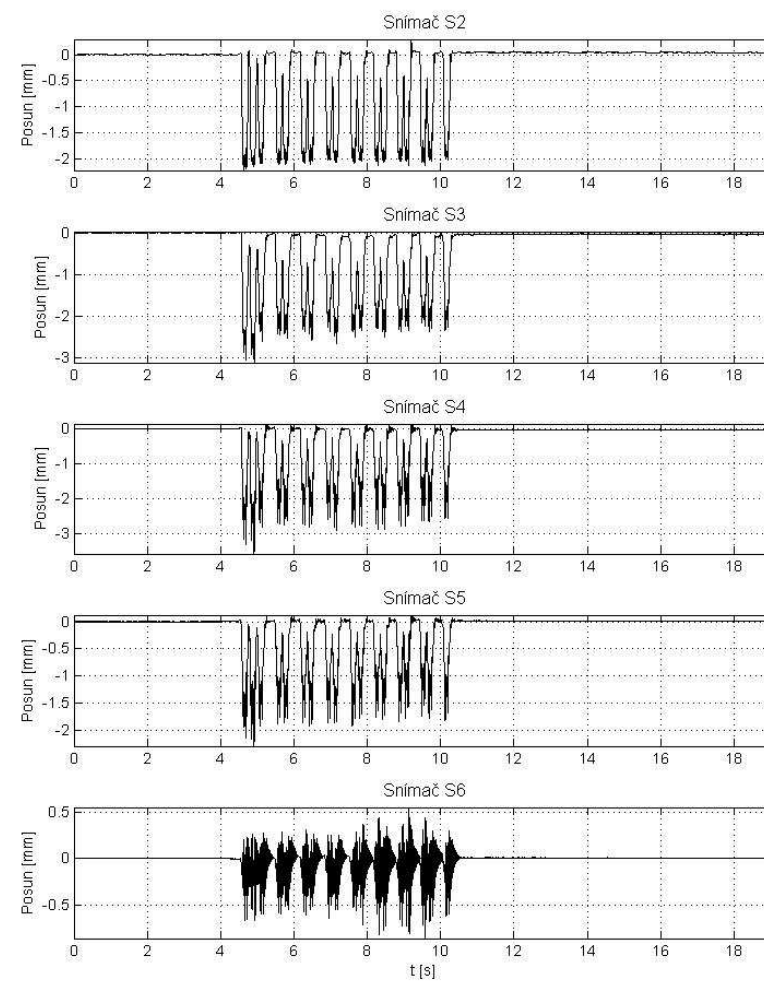
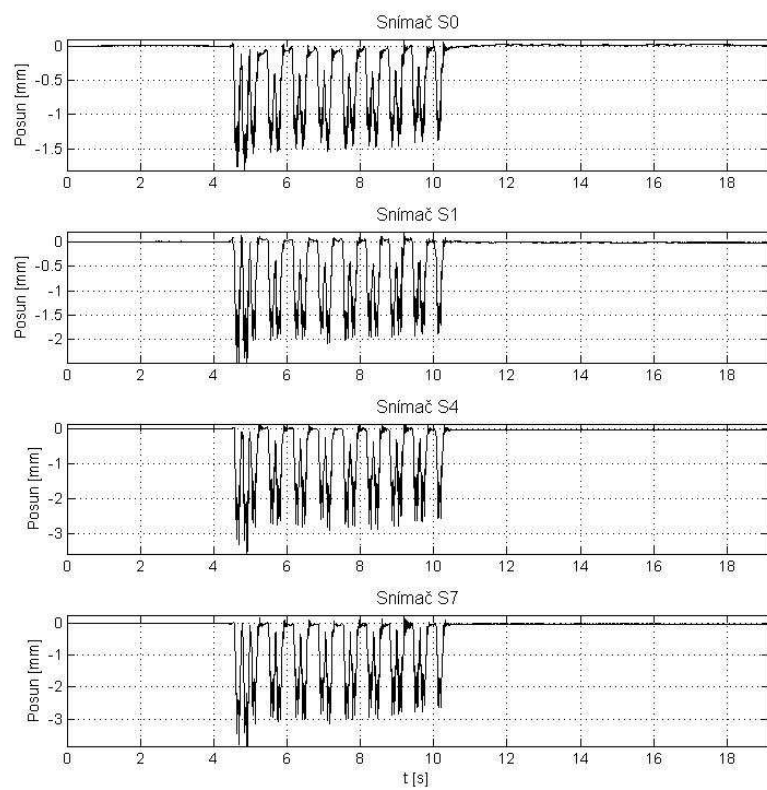
### 13. Loko 151 – 130 km/h

I:\63\13\_Vlak\_2013\_04\_08\_124247.txt



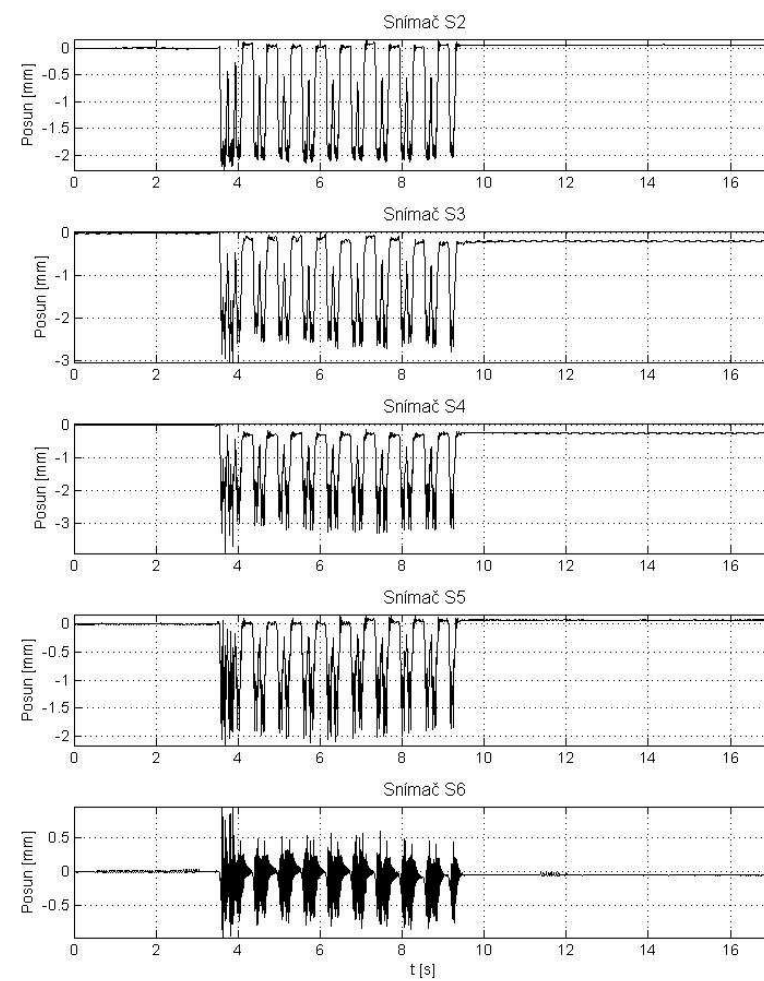
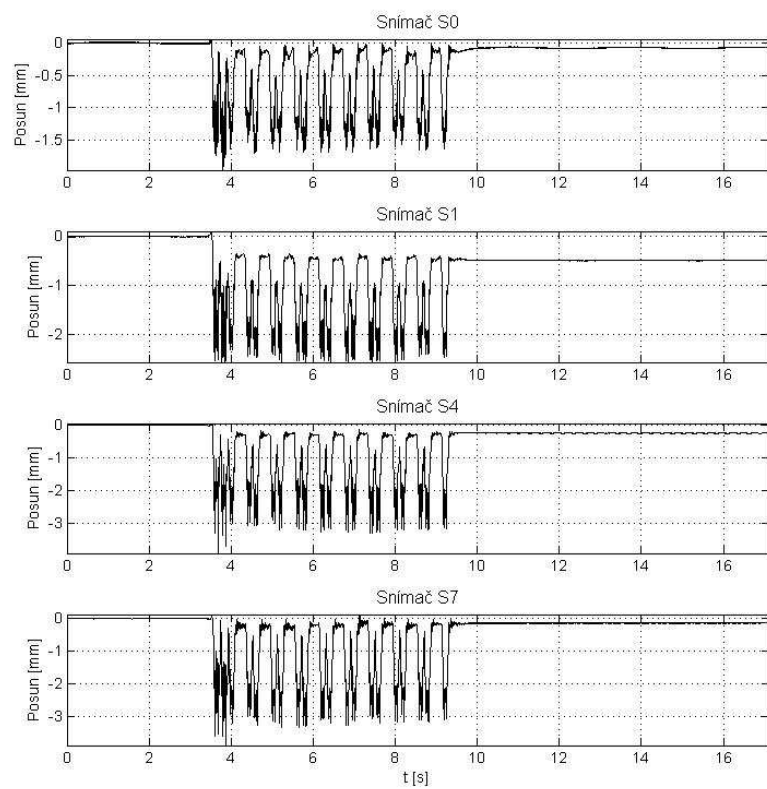
## 14. Loko 380 – 141 km/h

I:\63\14\_Vlak\_2013\_04\_08\_124703.txt



## 15. Loko 350 – 160 km/h

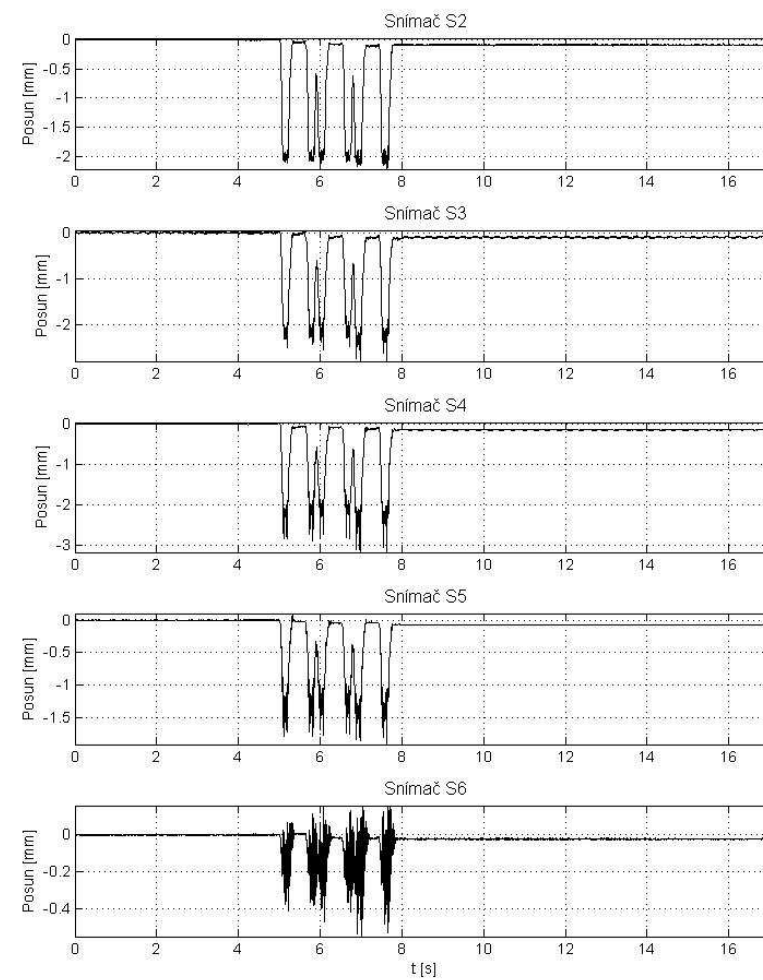
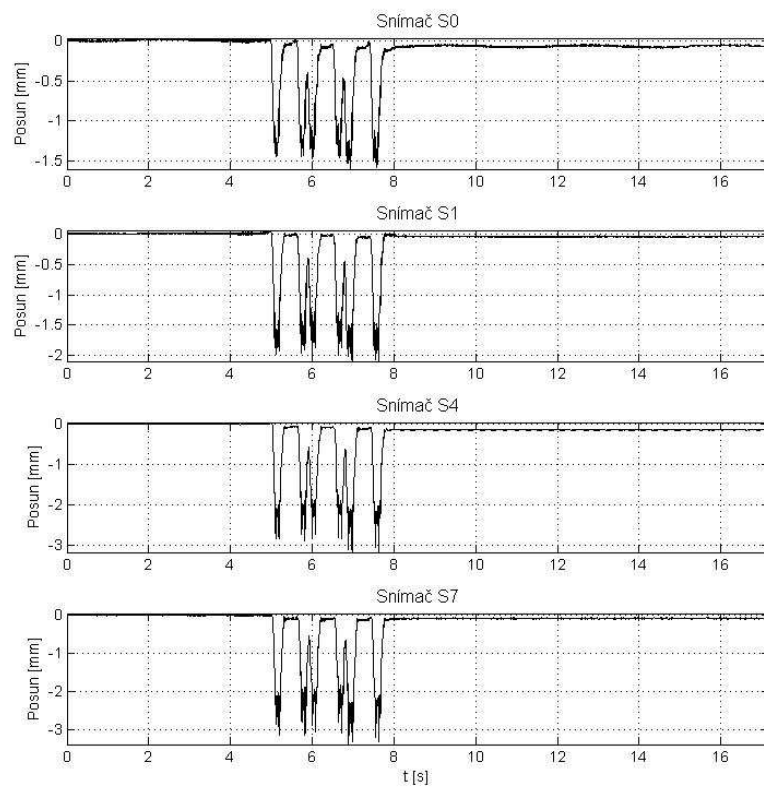
I:\63\15\_Vlak\_2013\_04\_08\_130828.txt





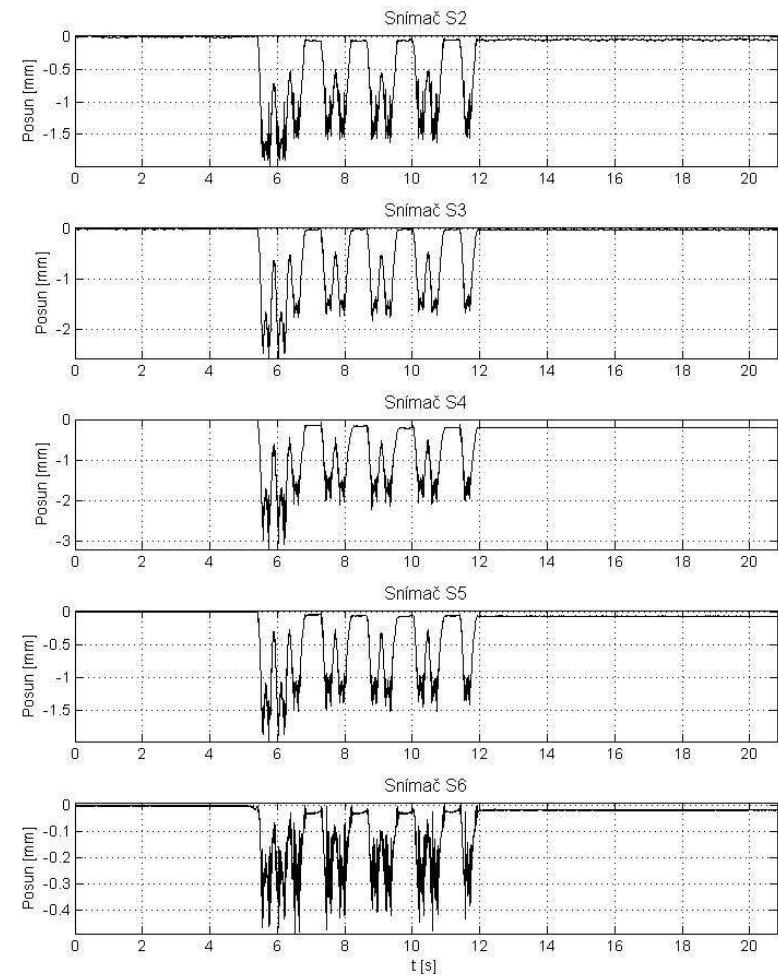
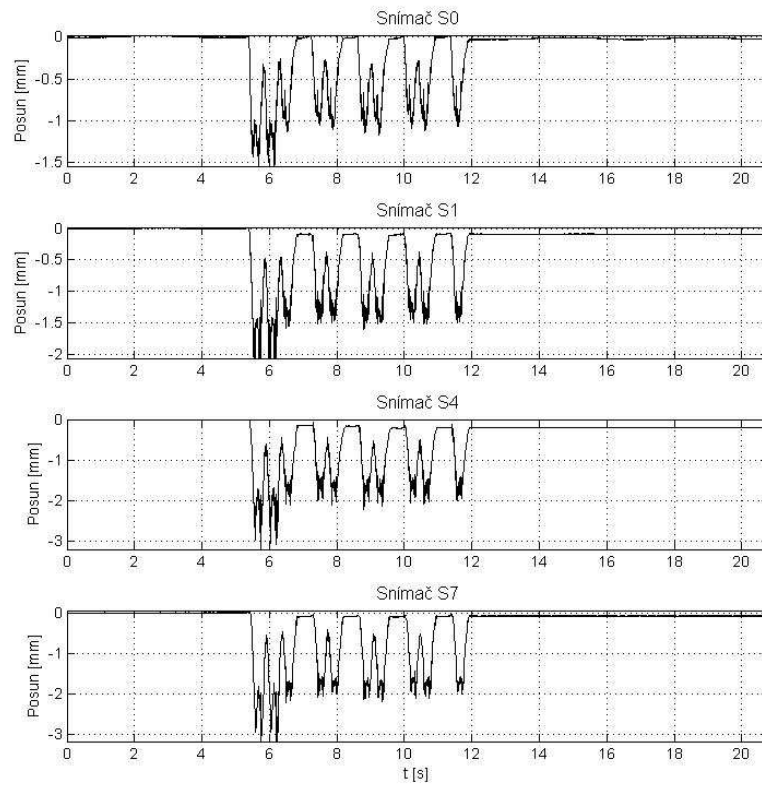
## 16. Loko 471 – 122 km/h

I:\63\16\_Vlak\_2013\_04\_08\_132427.txt



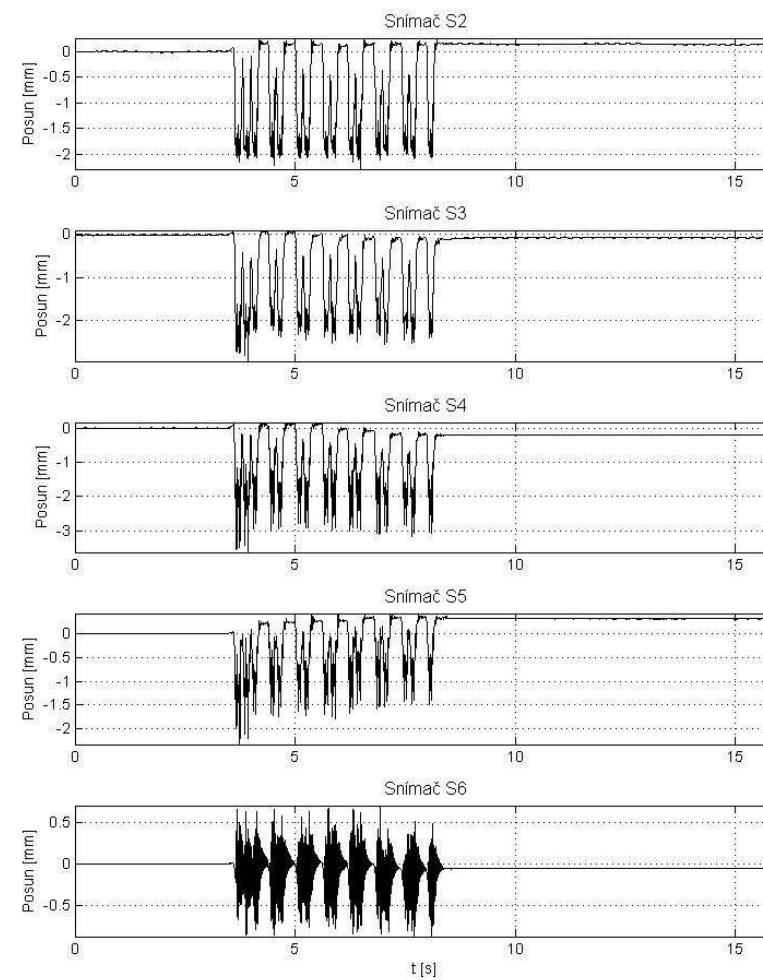
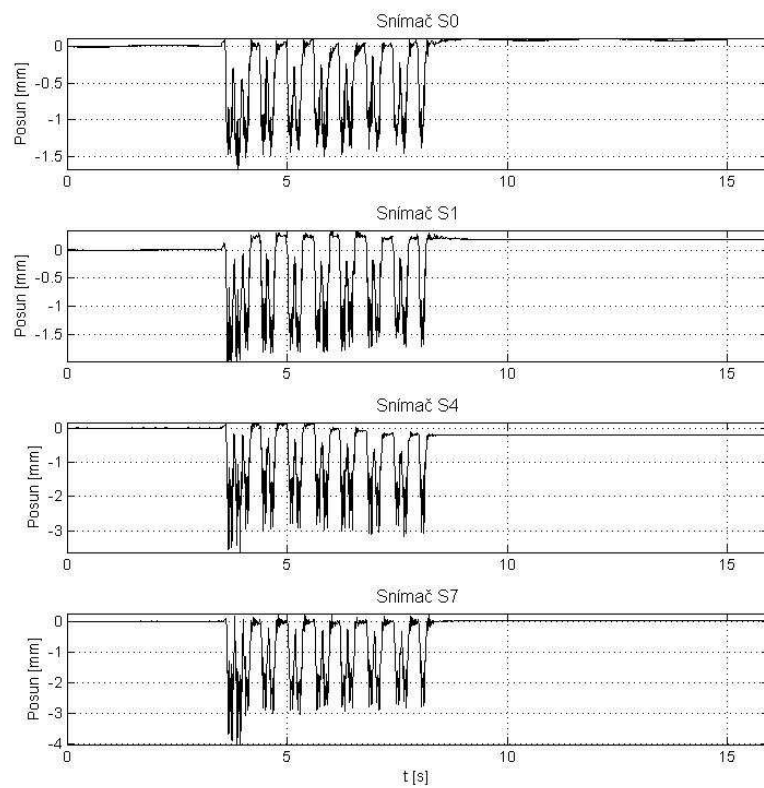
## 17. Loko 362 – 69 km/h

I:\63\17\_Vlak\_2013\_04\_08\_132652.txt



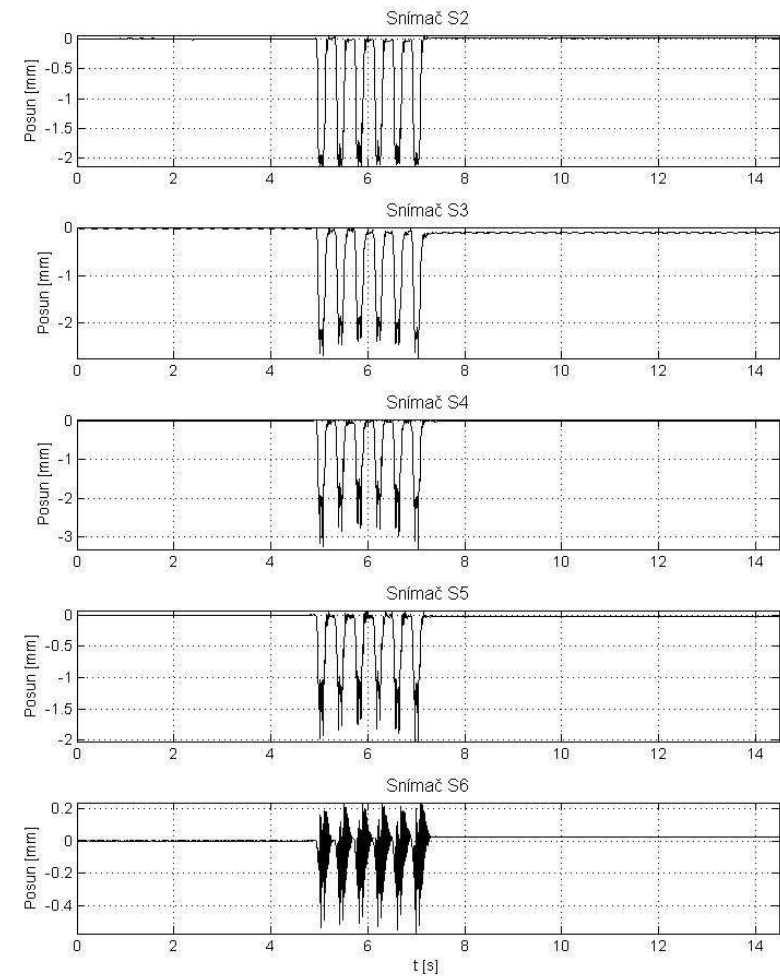
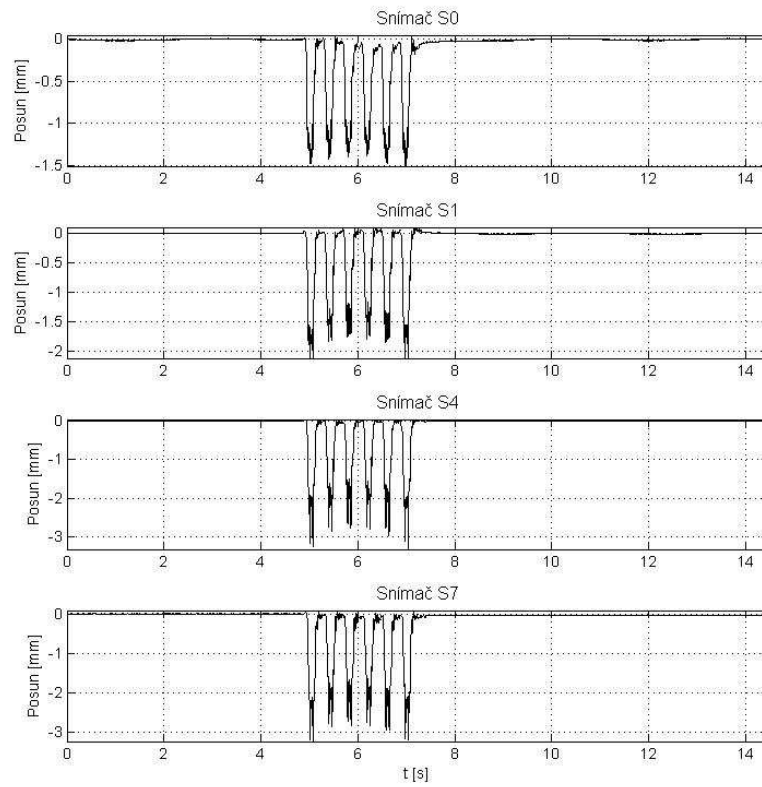
## 18. Loko 151 – 156 km/h

I:\63\18\_Vlak\_2013\_04\_08\_134207.txt



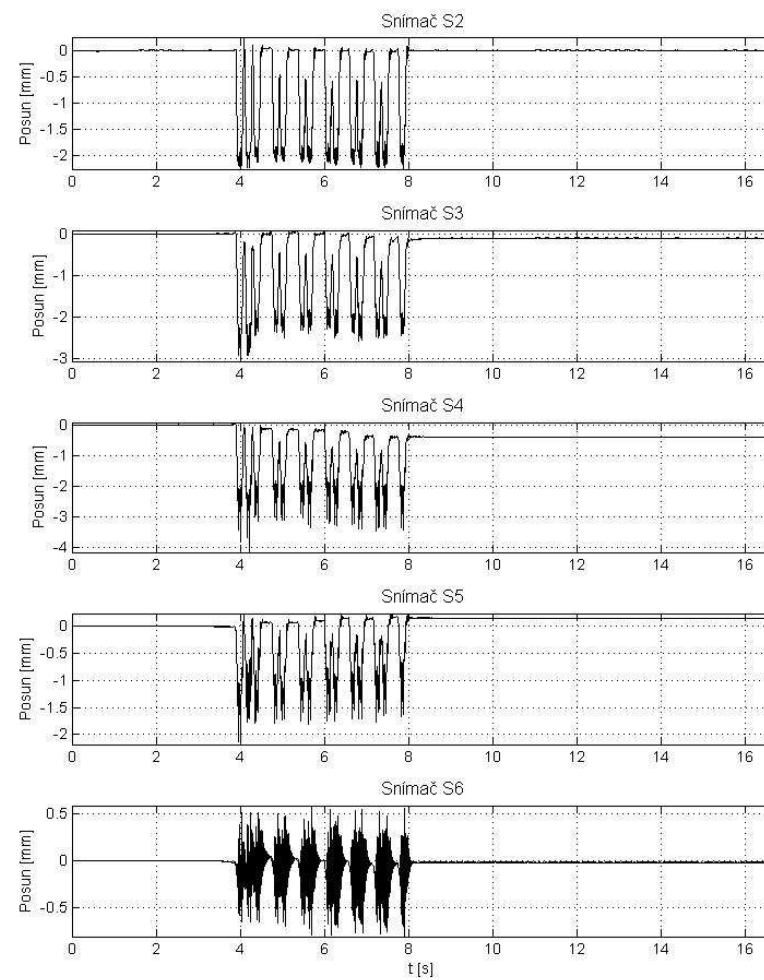
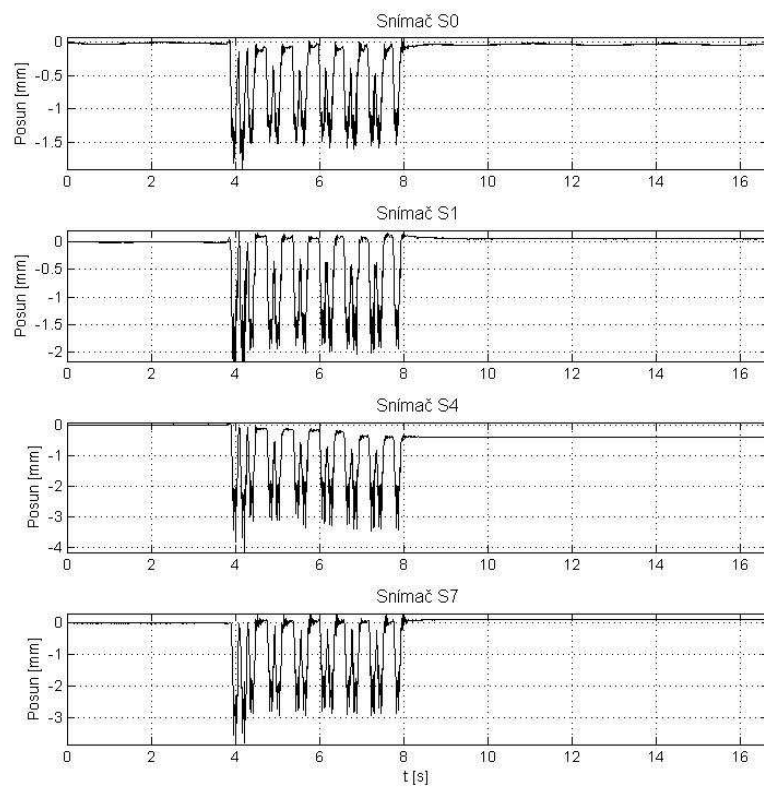
## 19. Leo express – 154 km/h

I:\63\19\_Vlak\_2013\_04\_08\_134445.txt



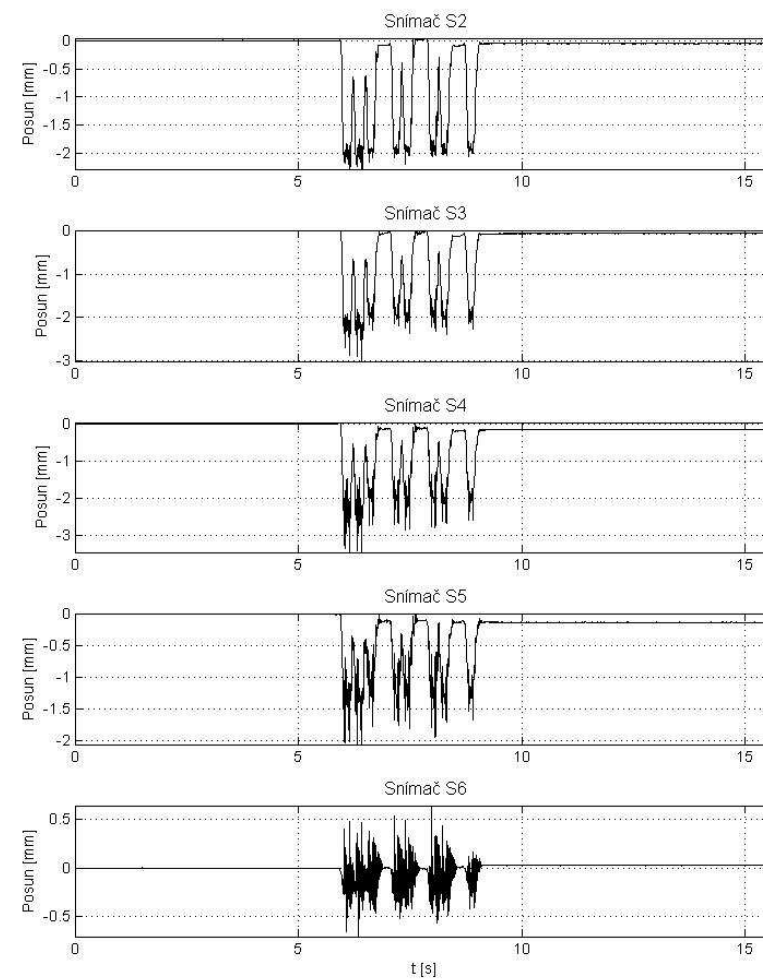
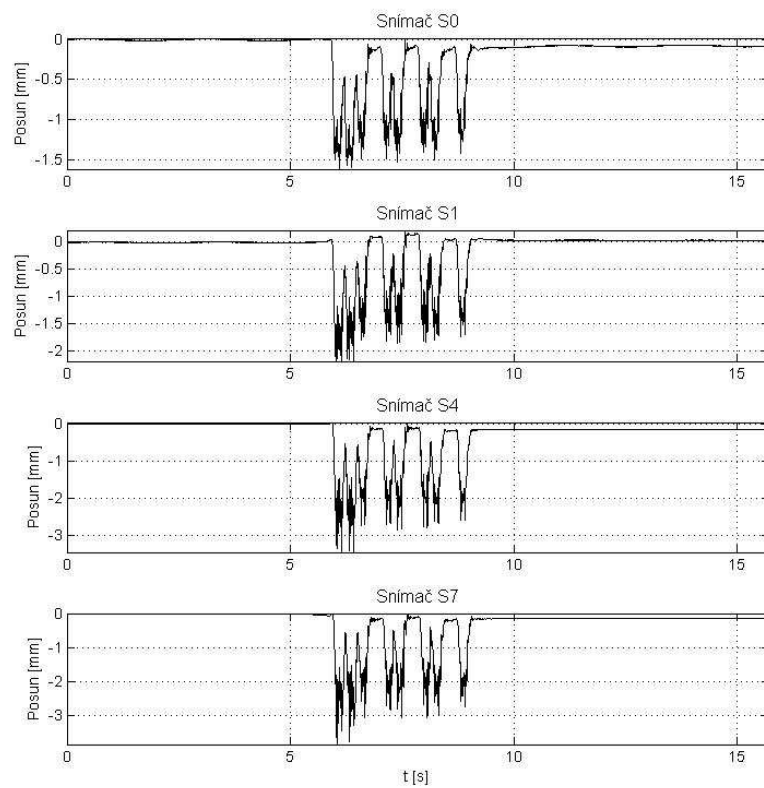
## 20. Loko 380 – 153 km/h

I:\63\20\_Vlak\_2013\_04\_08\_135945.txt



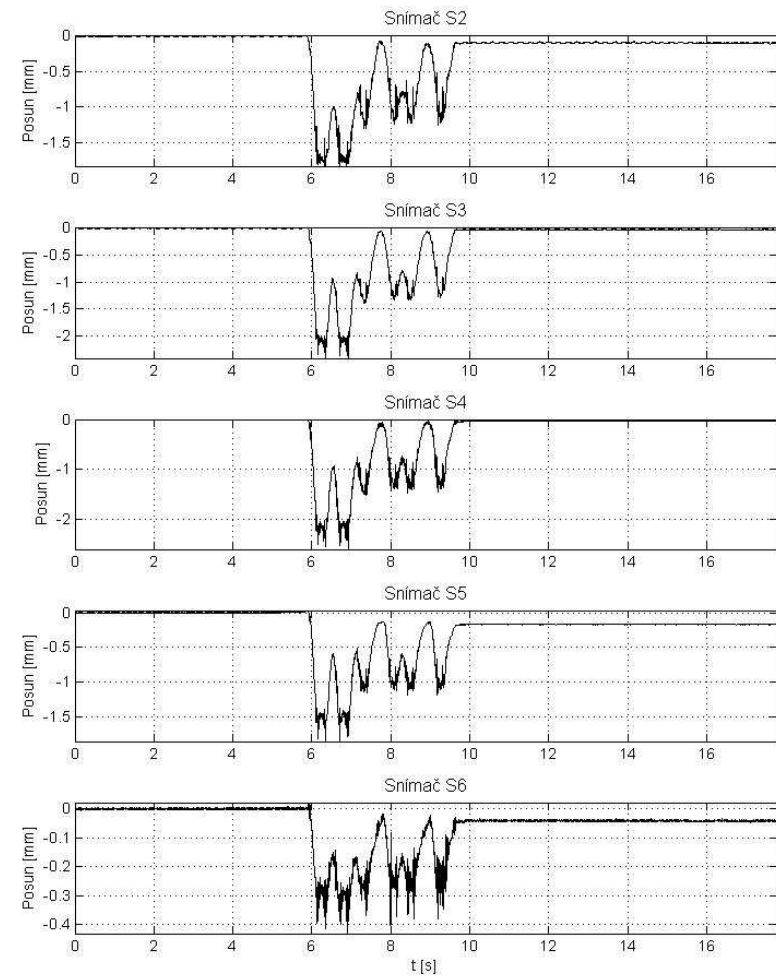
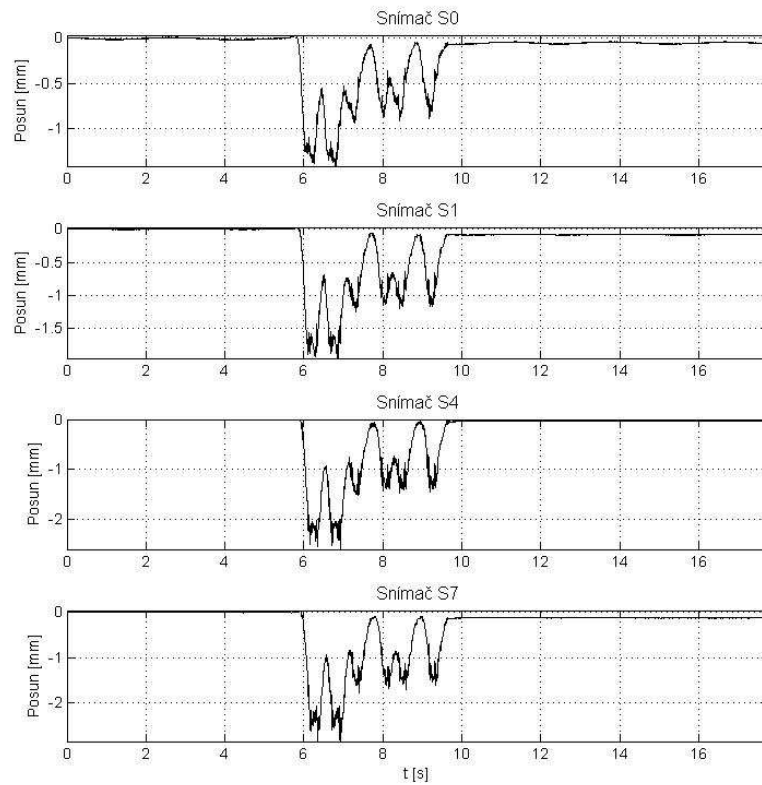
## 21. Loko 163 – 116 km/h

I:\63\21\_Vlak\_2013\_04\_08\_141141.txt



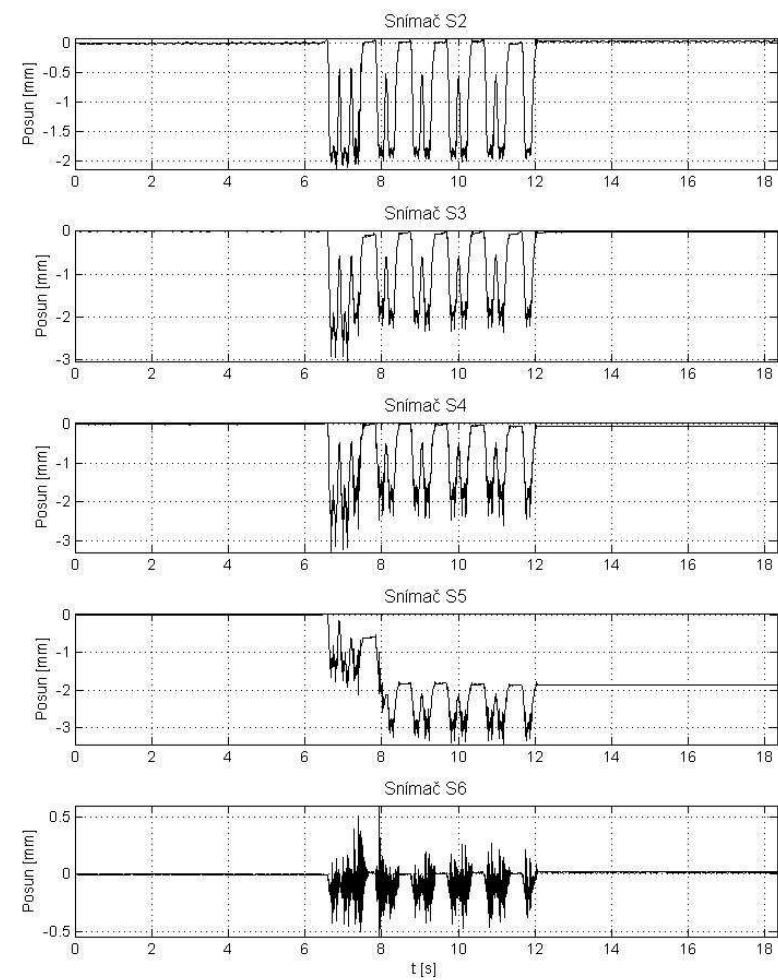
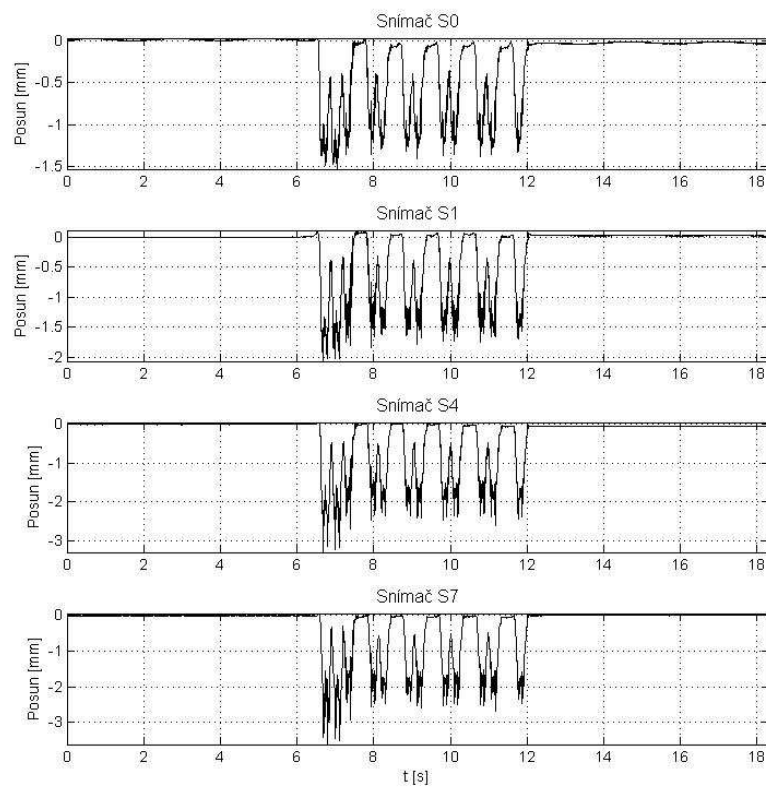
## 22. Loko 742 – 43 km/h

I:\63\22\_Vlak\_2013\_04\_08\_141559.txt



## 23. Loko 150 – 117 km/h

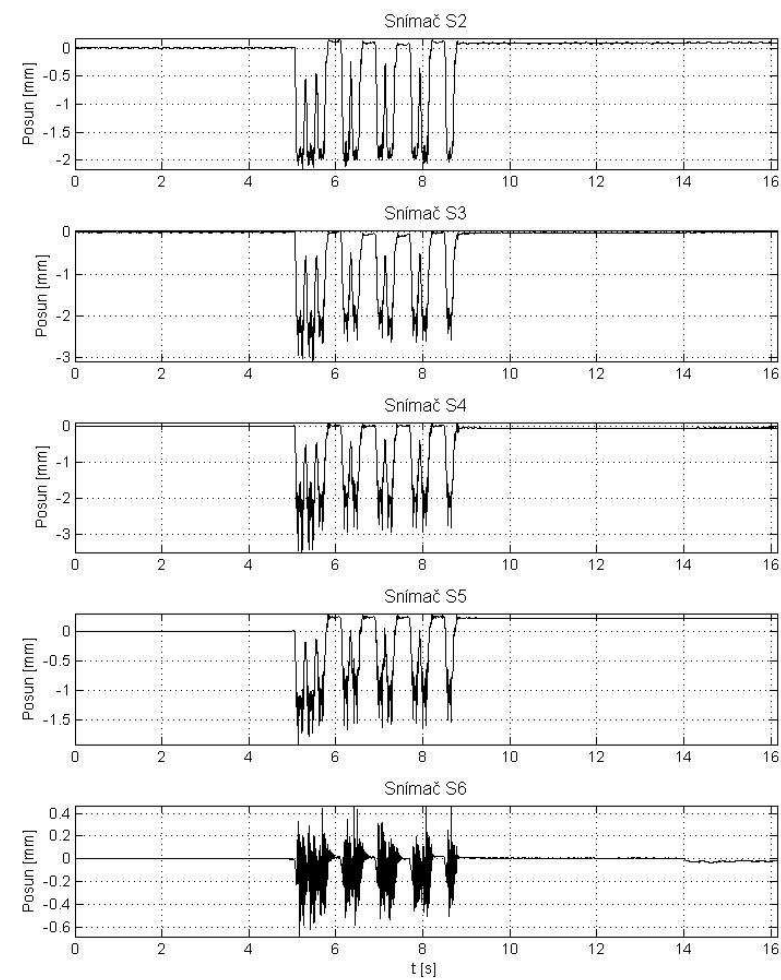
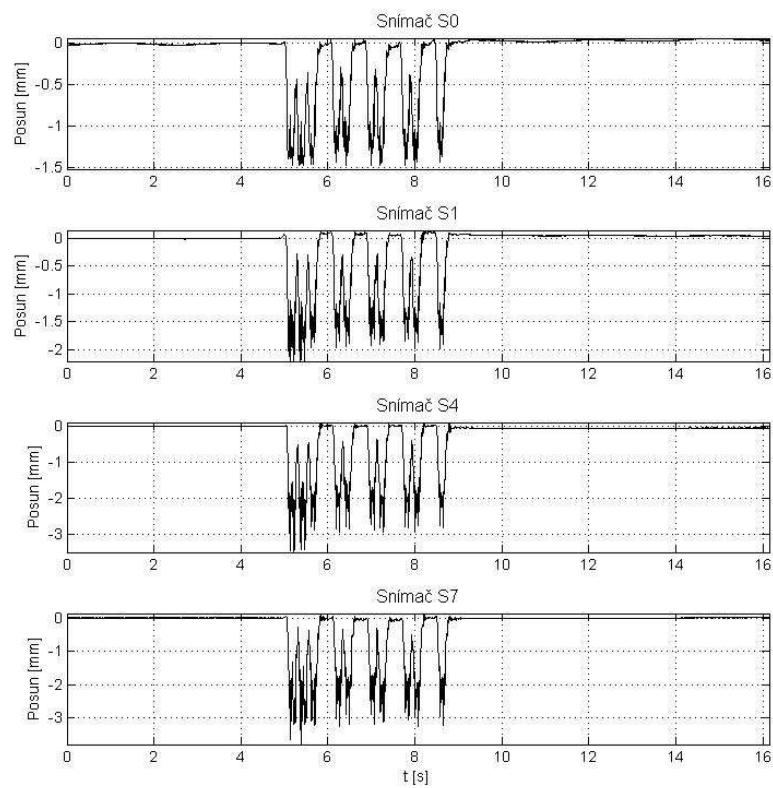
I:\63\23\_Vlak\_2013\_04\_08\_142225.txt





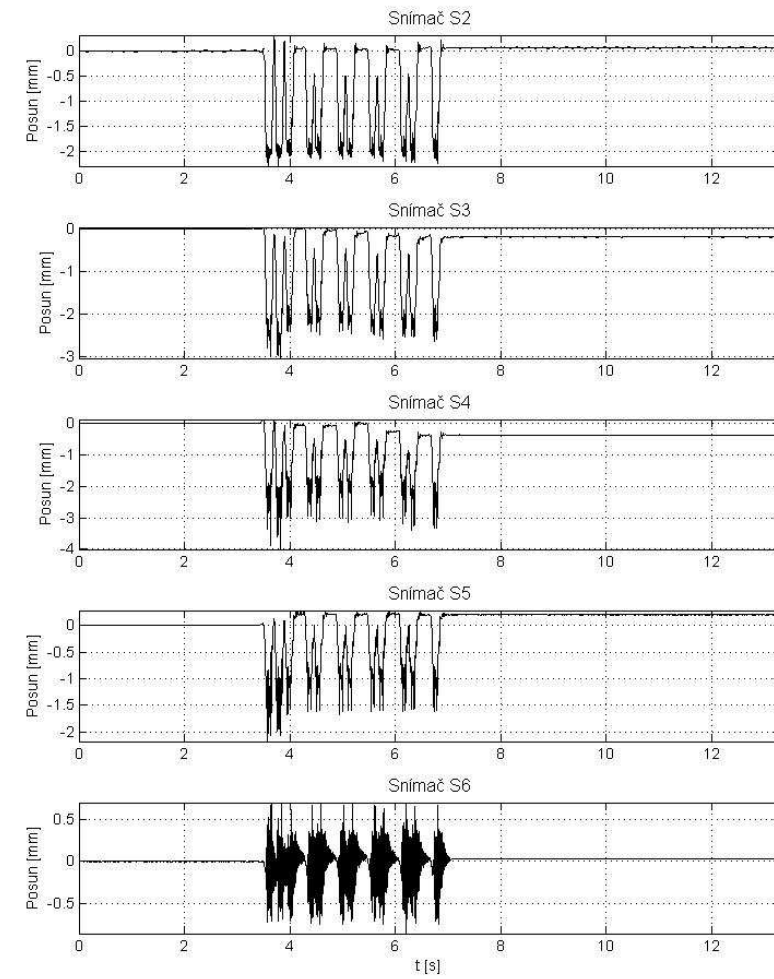
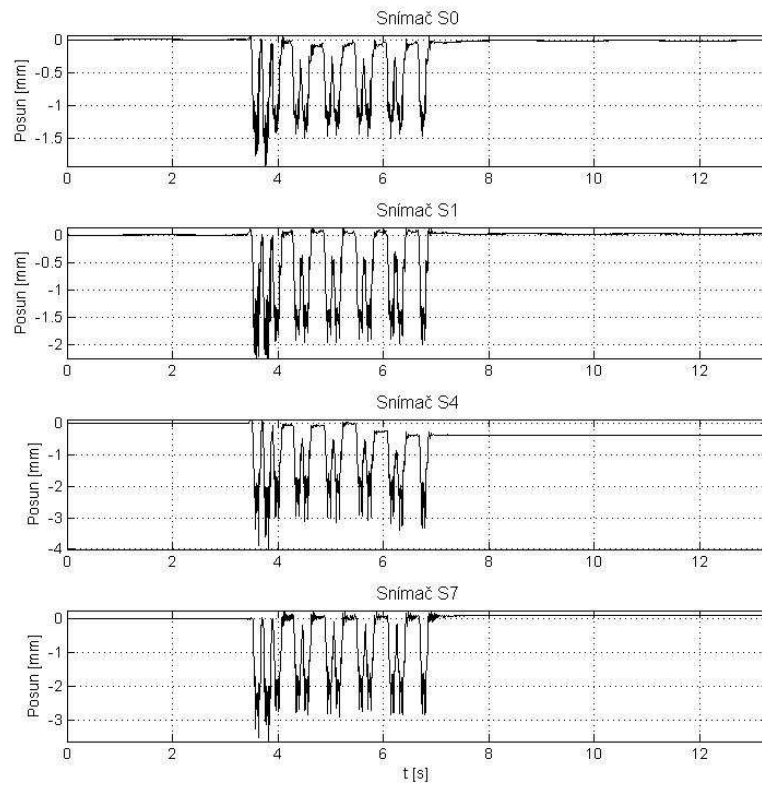
## 24. 163 Regio Jet – 133 km/h

I:\63\24\_Vlak\_2013\_04\_08\_143034.txt



## 25. Loko 380 - 162 km/h

I:\63\25\_Vlak\_2013\_04\_08\_143639.txt



## 26. 680 Pendolino – 161 km/h

I:\63\26\_Vlak\_2013\_04\_08\_144251.txt

