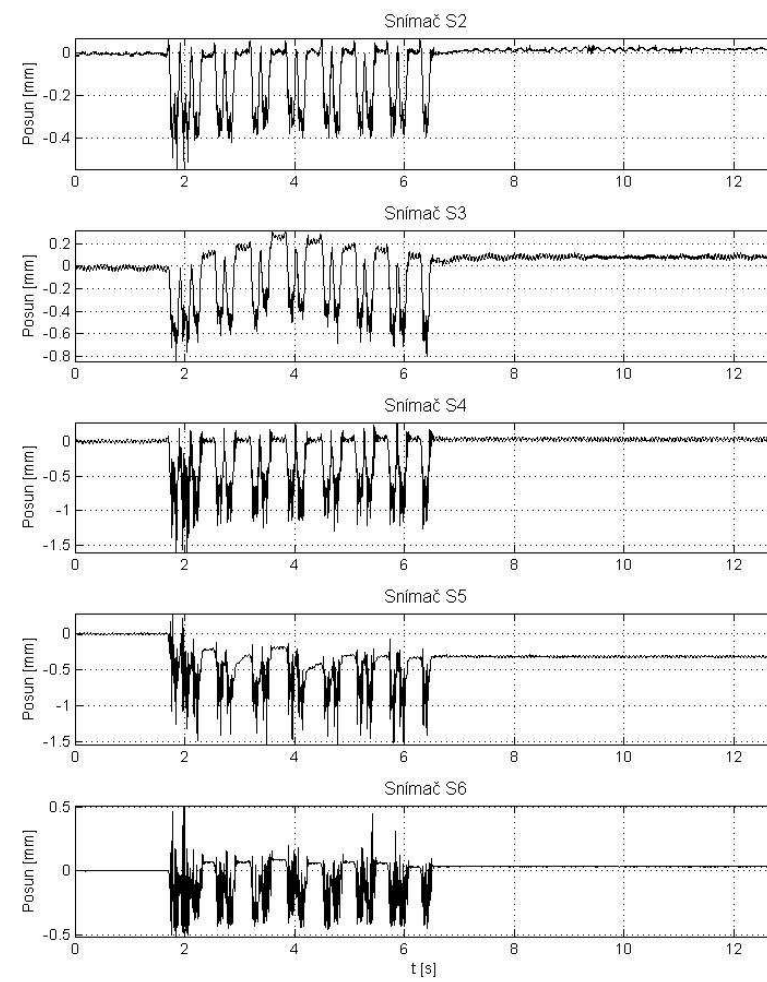
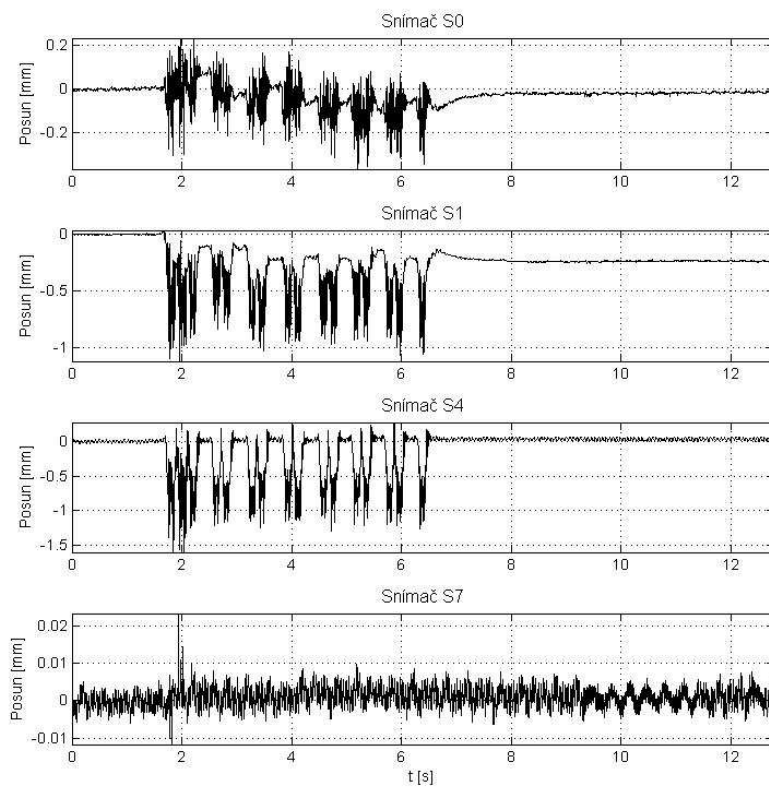


PŘÍLOHA A

Analýza posunů na výhybce č. 59

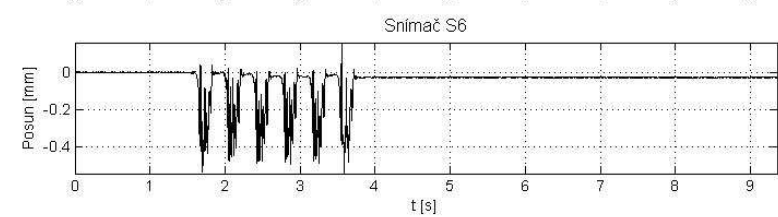
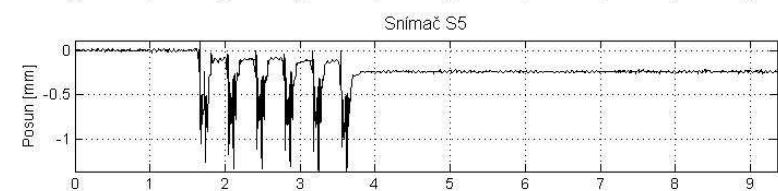
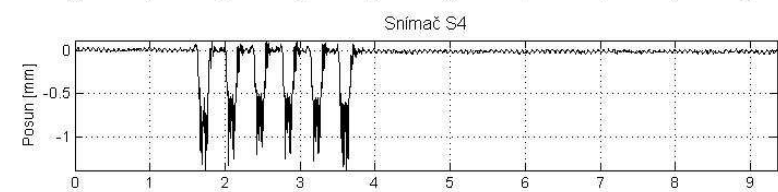
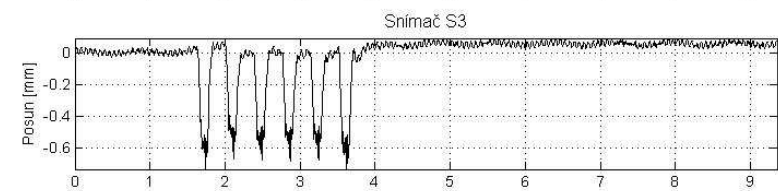
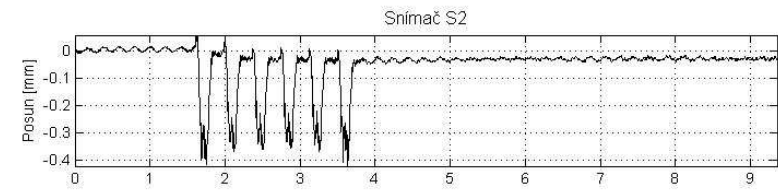
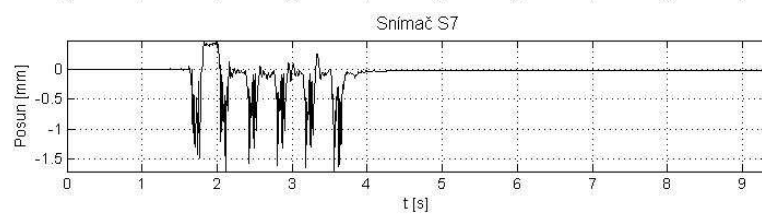
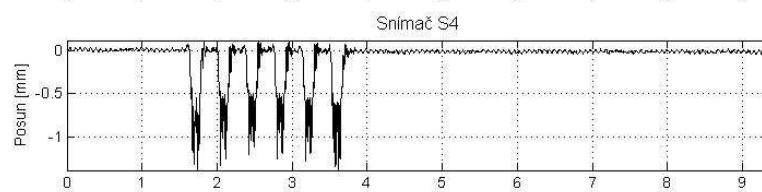
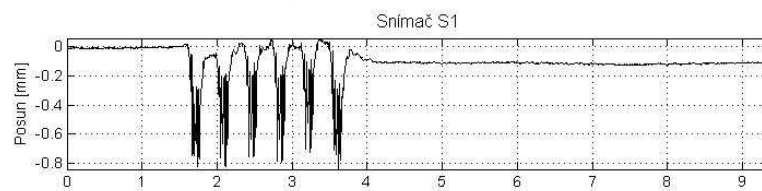
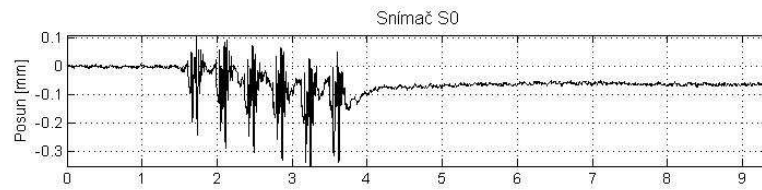
2. Loko 363 – 138 km/h

I:\59\2_Vlak_2013_03_25_122346.txt



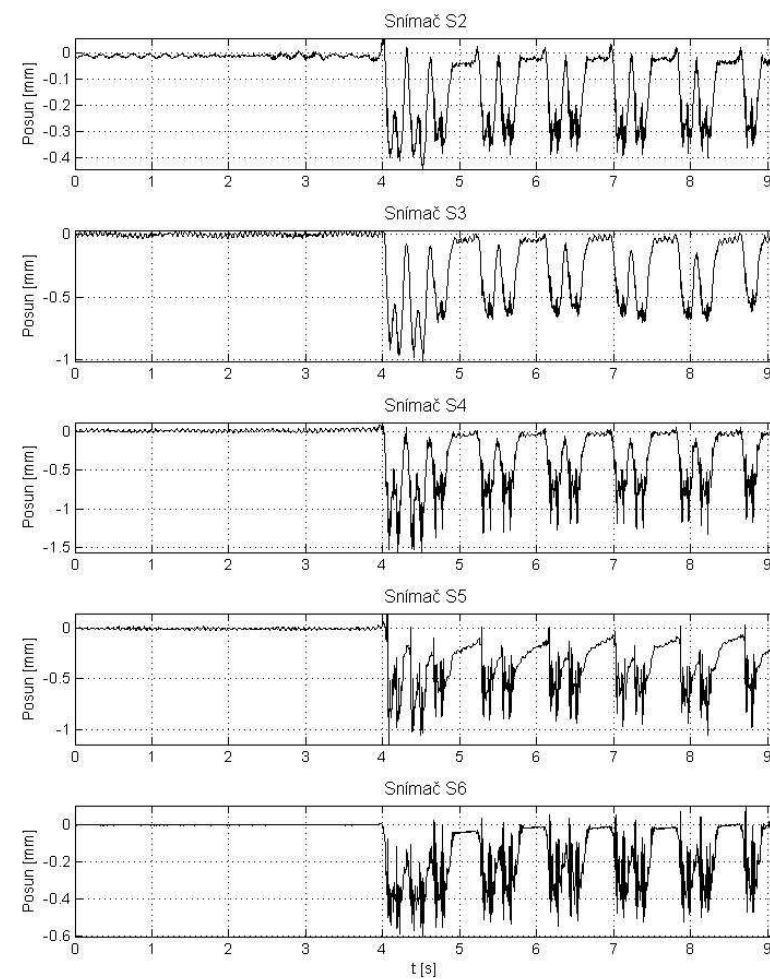
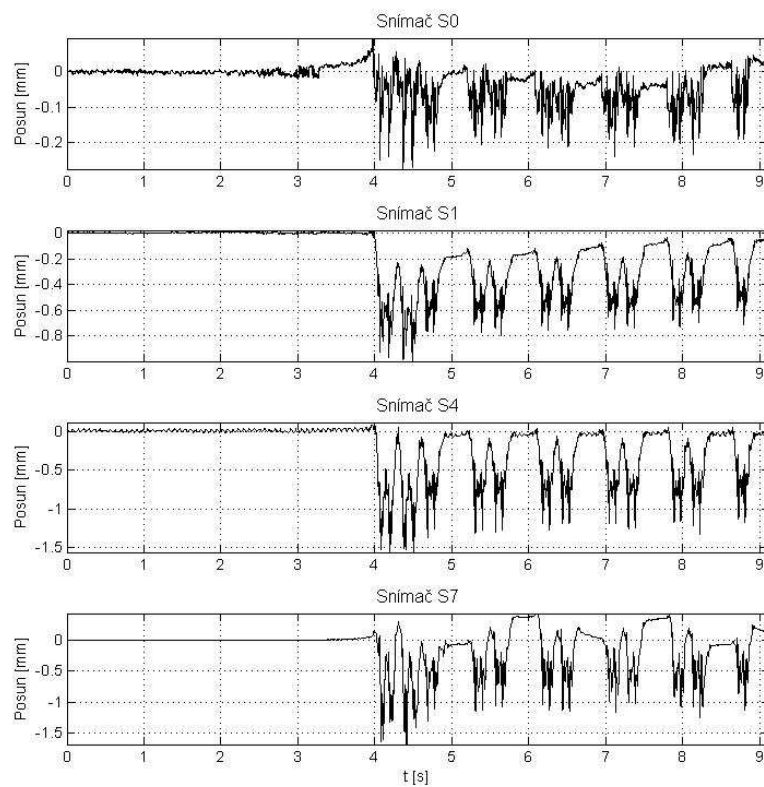
3. Leo Express – 152 km/h

I:\59\3_Vlak_2013_03_25_123326.txt



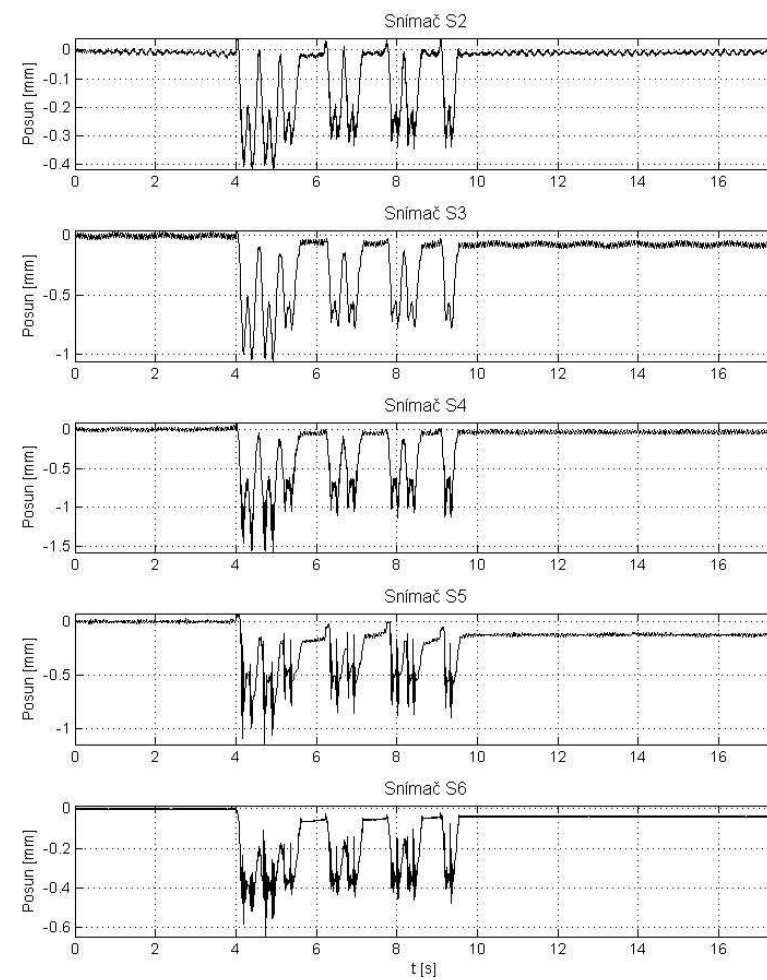
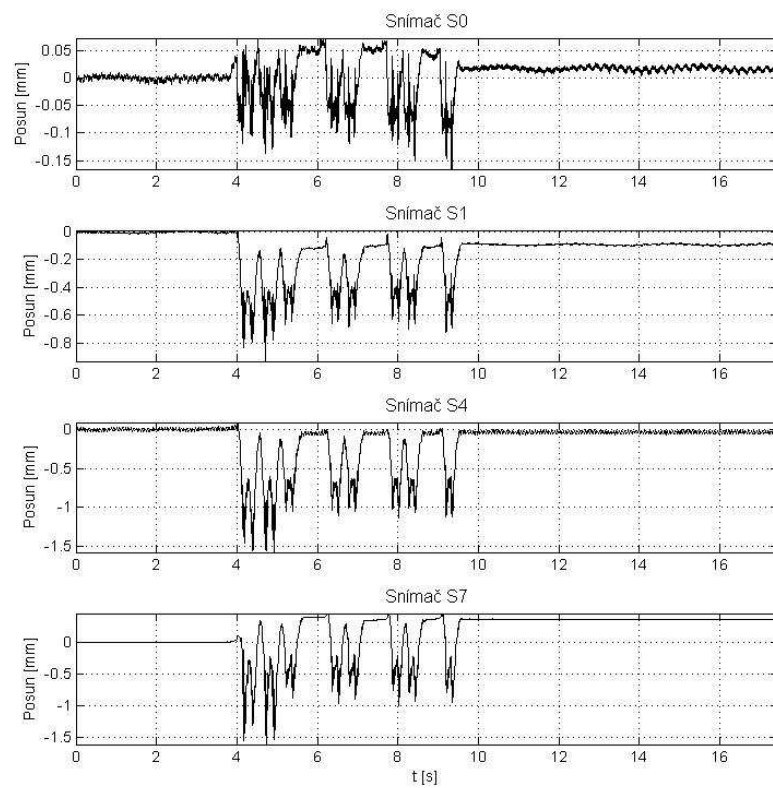
4. Loko 362 – 94 km/h

I:\594_Vlak_2013_03_25_123944.txt



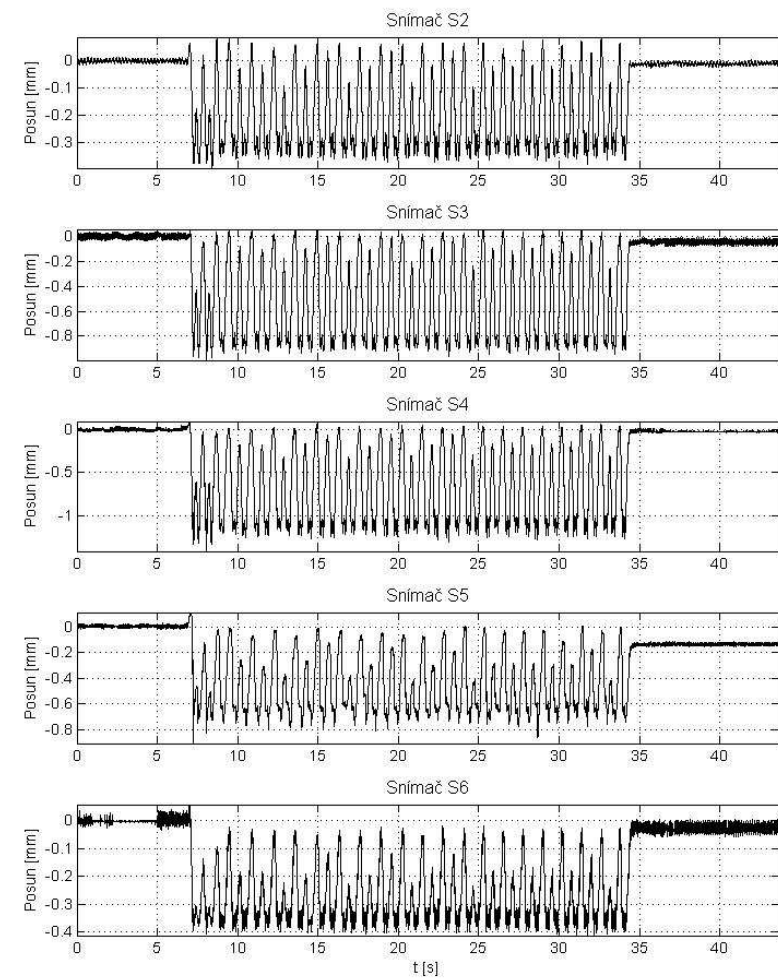
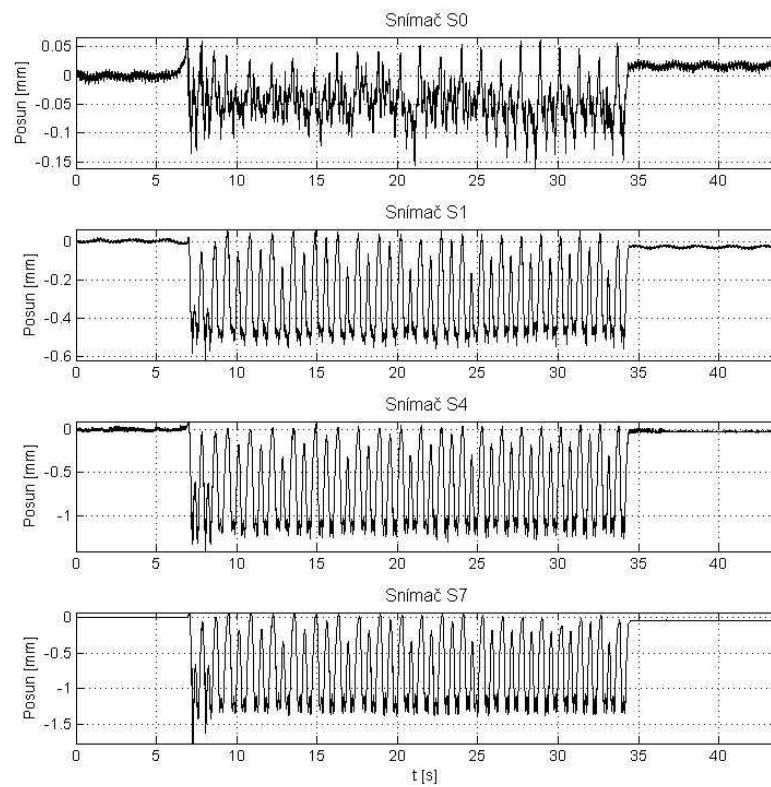
5. Loko 163 – 51 km/h

I:\59\5_Vlak_2013_03_25_124200.txt



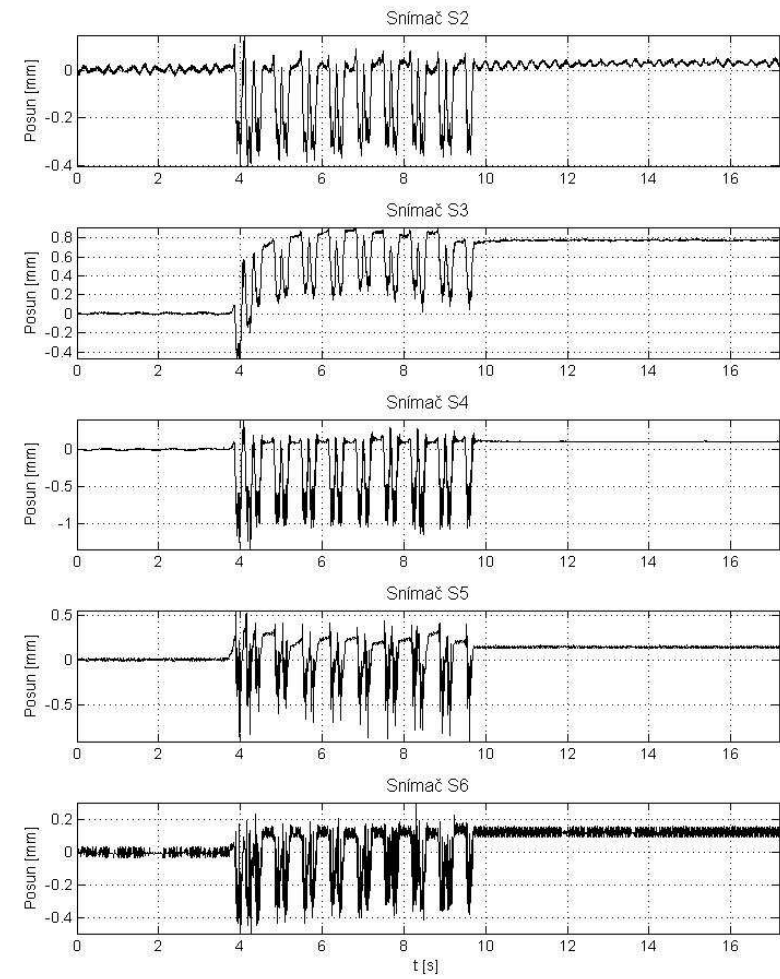
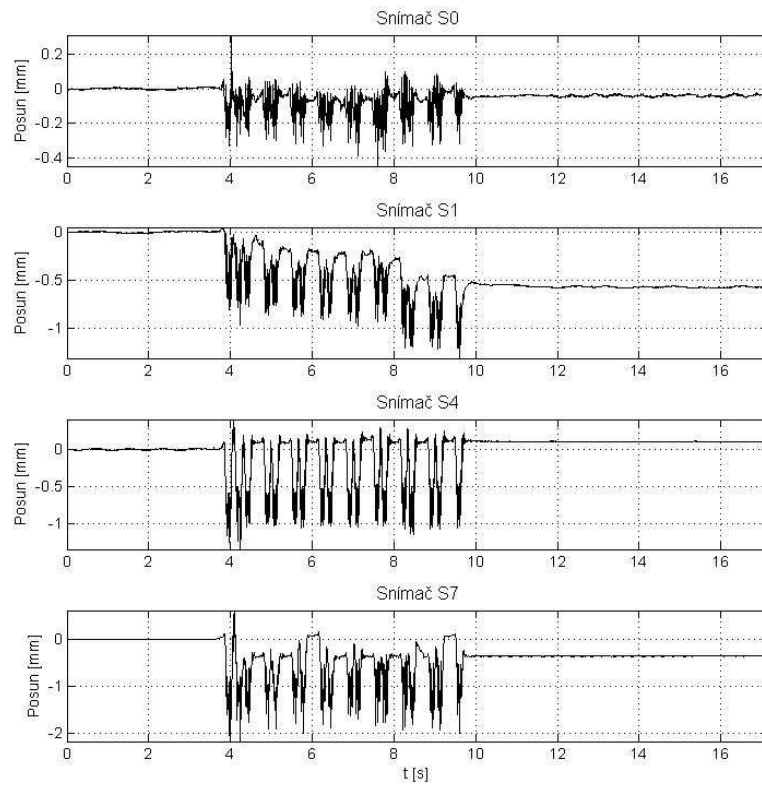
6. Loko 242 náklad – 33 km/h

I:\59\6_Vlak_2013_03_25_124518.txt



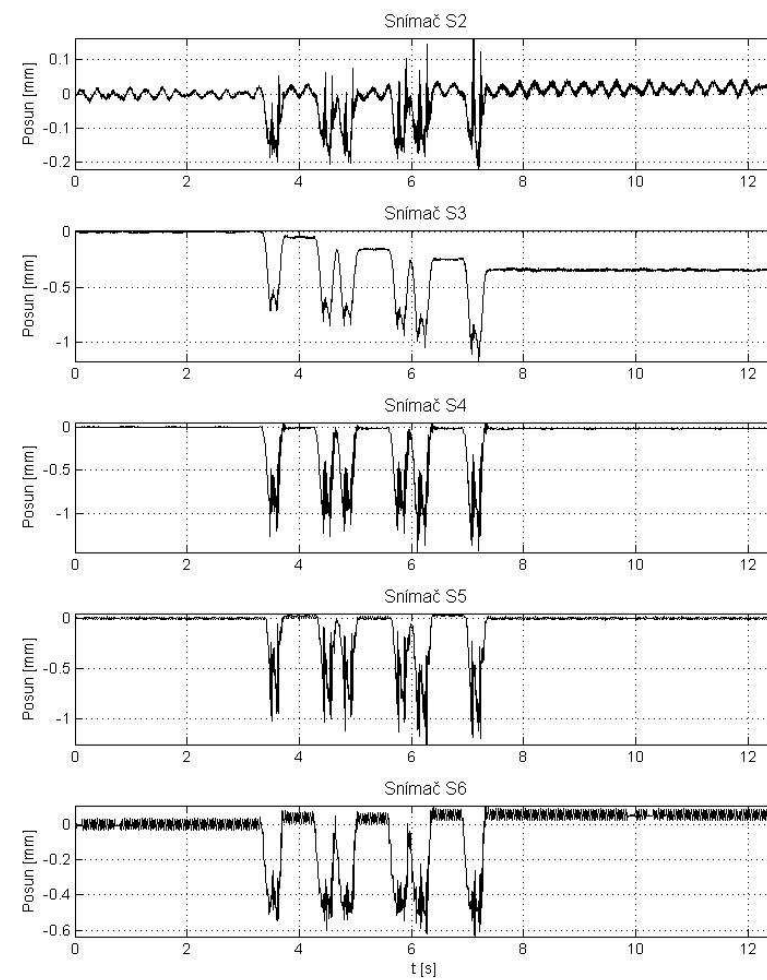
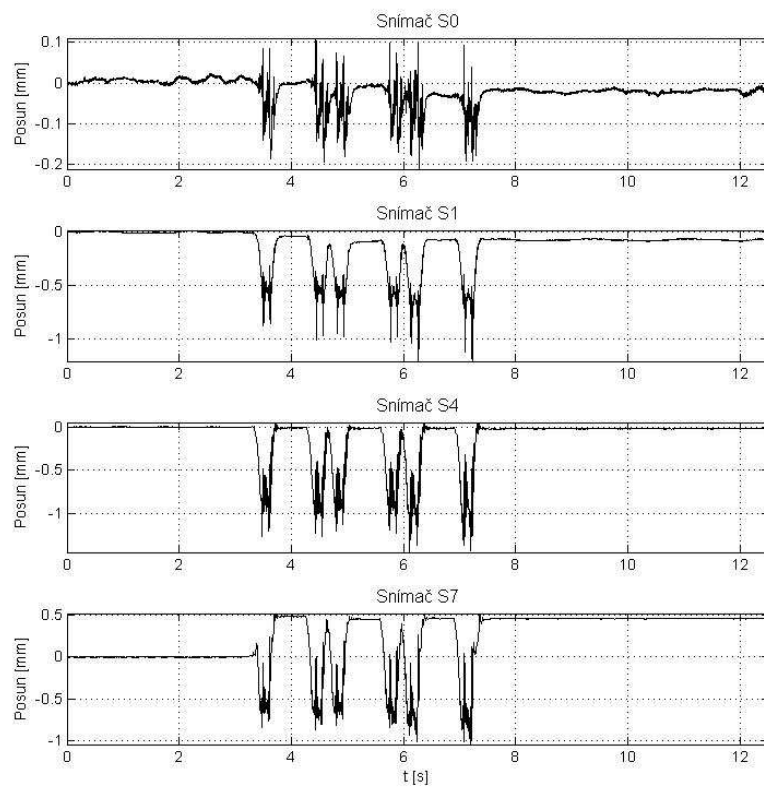
7. 182 Taurus – 140 km/h

I:\59\7_Vlak_2013_03_25_131106.txt



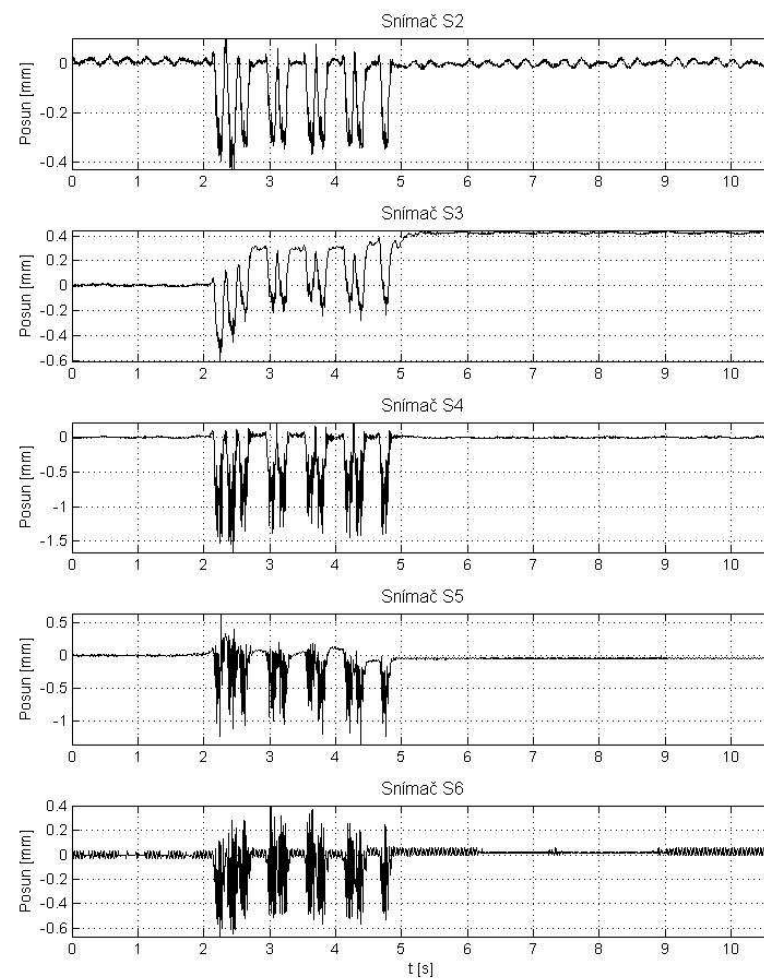
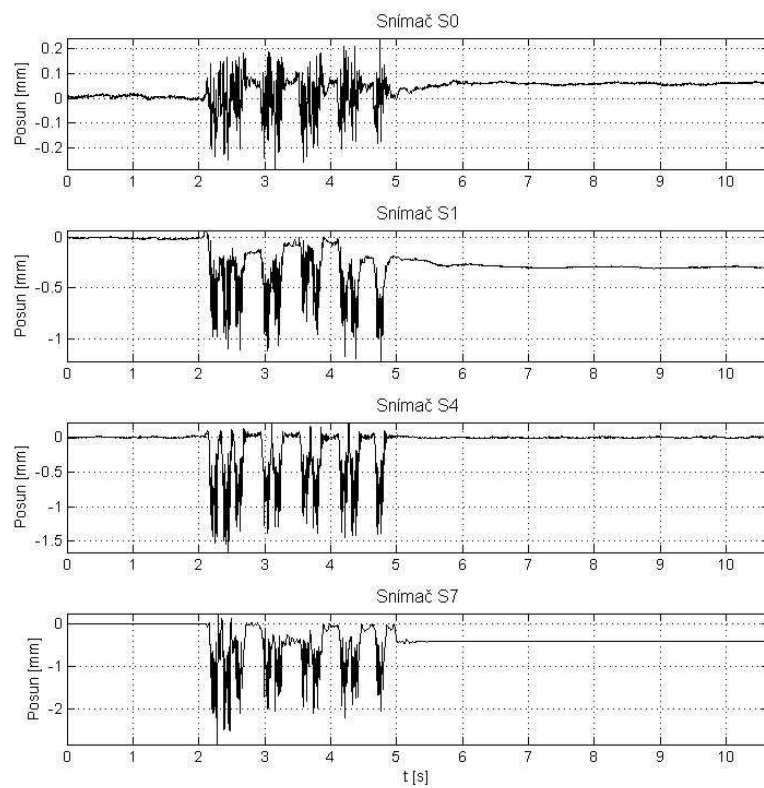
8. 471 City Elefant – 72 km/h

I:\59\8_Vlak_2013_03_25_131715.txt



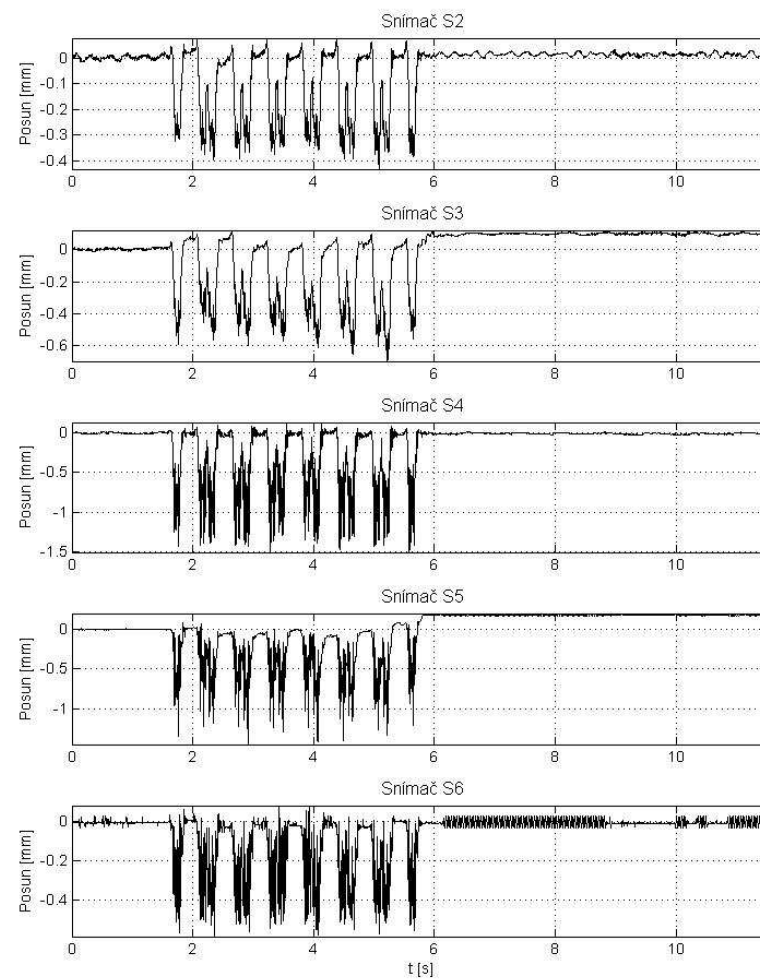
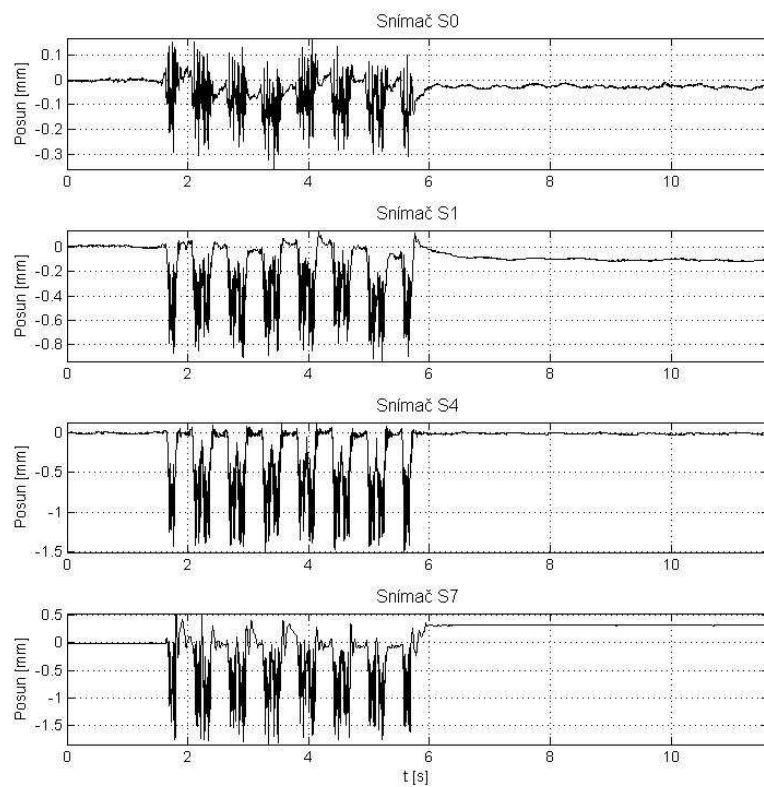
9. Loko 380 – 161 km/h

I:\59\9_2013_03_25_132308.txt



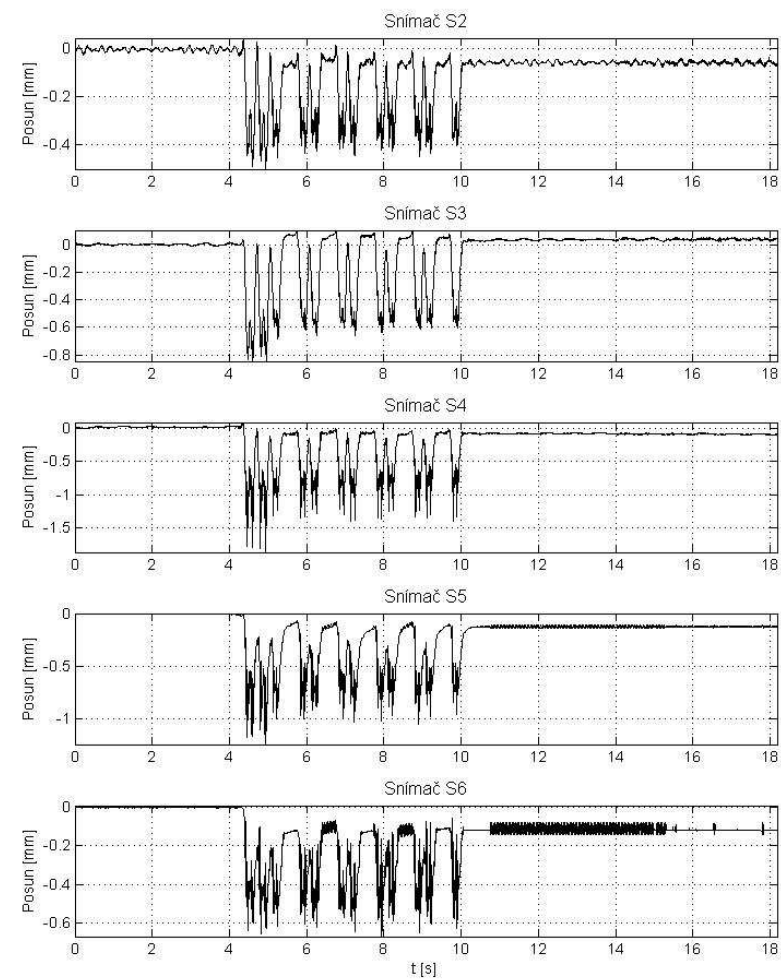
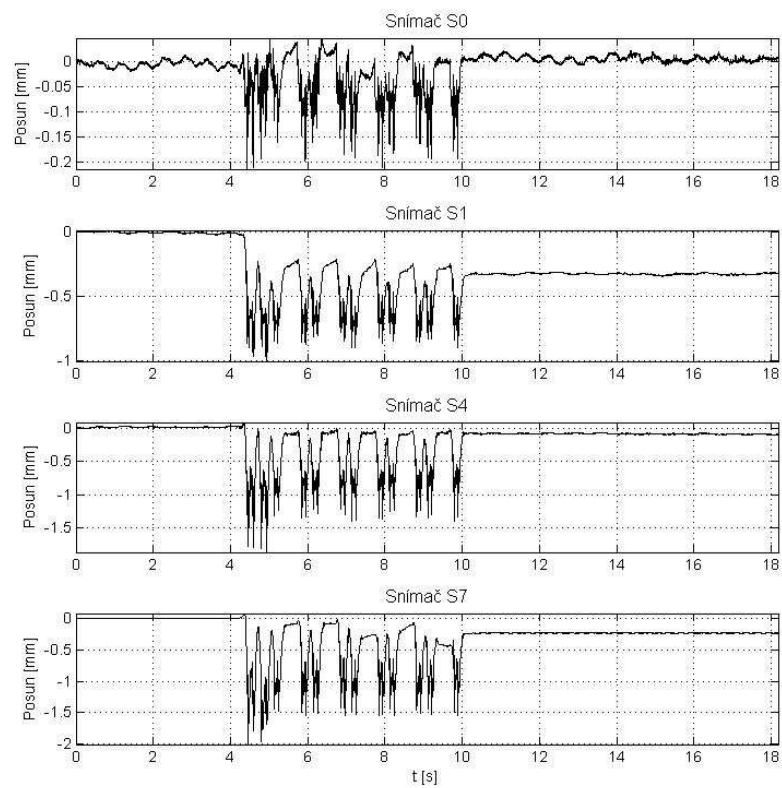
10. 680 Pendolino – 163 km/

I:\59\10_Vlak_2013_03_25_132748.txt



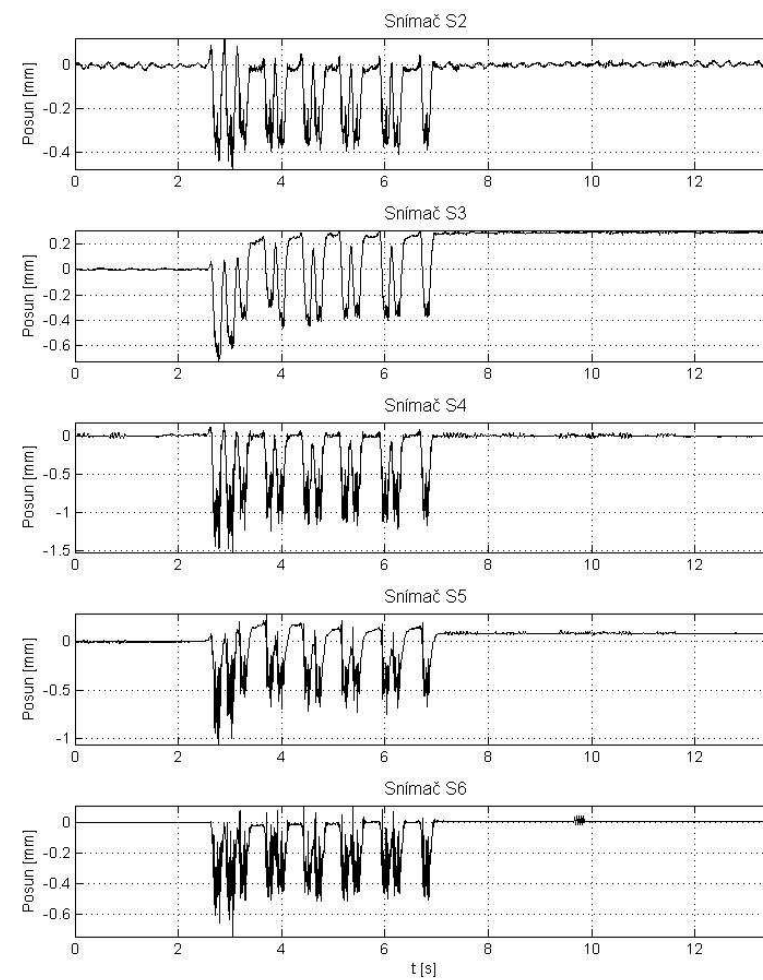
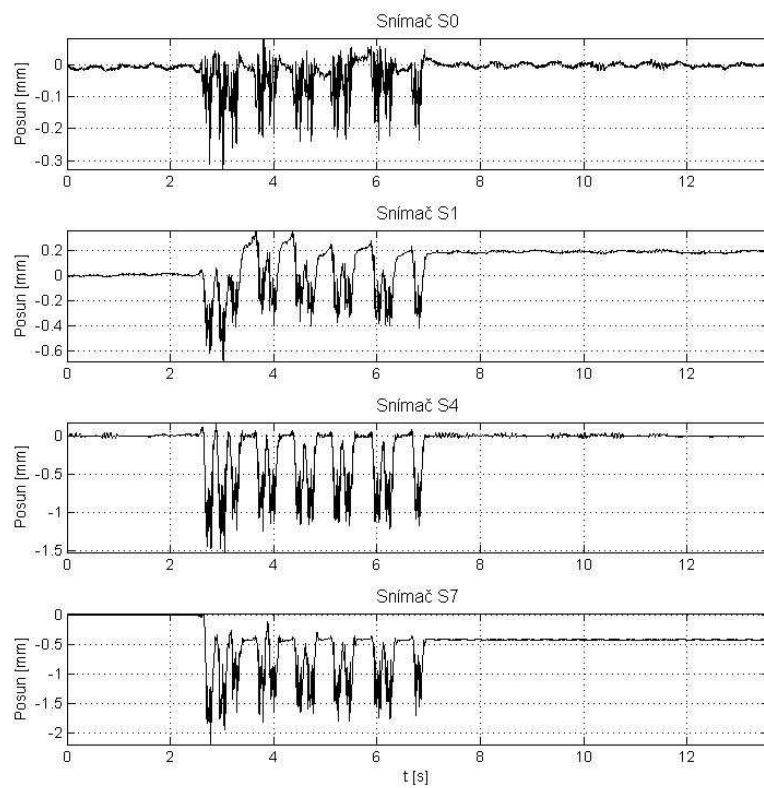
11. Loko 150 – 83 km/h

I:\59\11_Vlak_2013_03_25_133745.txt



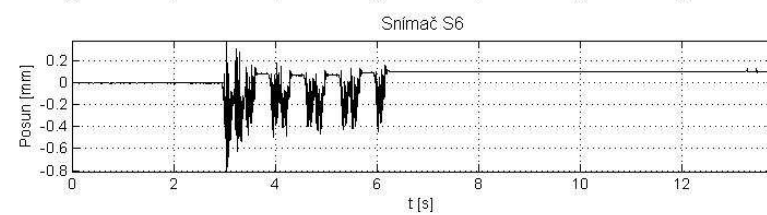
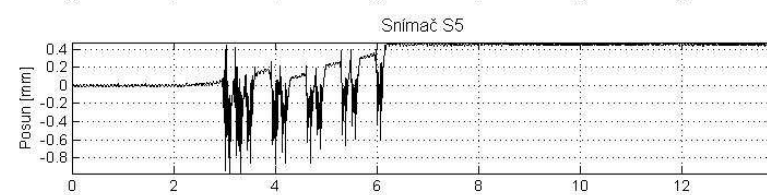
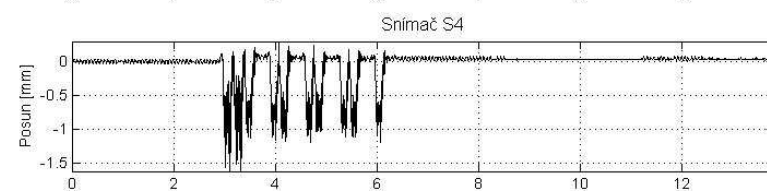
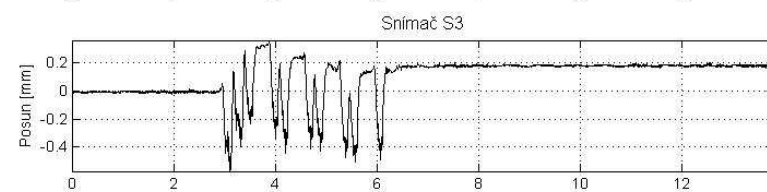
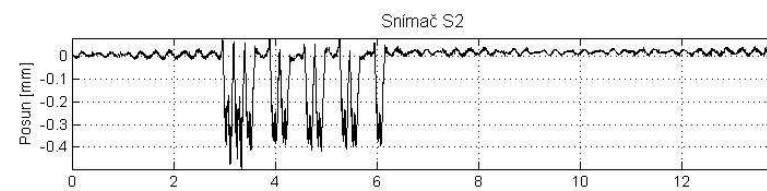
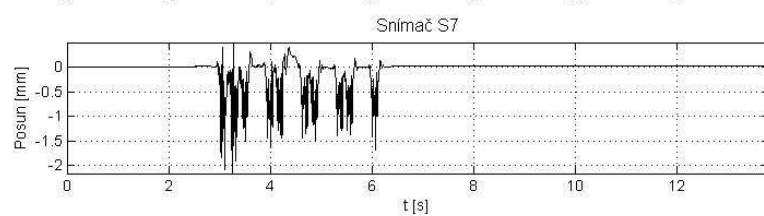
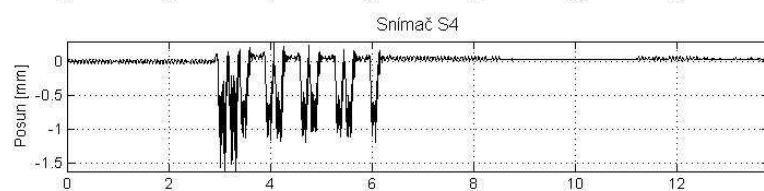
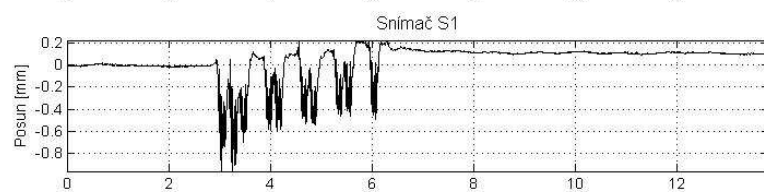
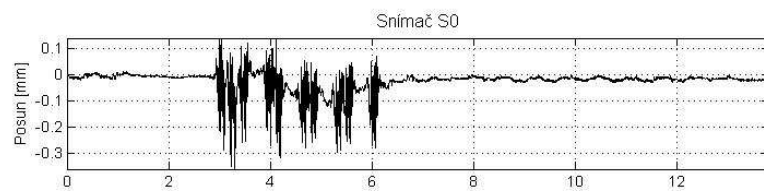
12. Loko 380 – 120 km/h

I:\59\12_Vlak_2013_03_25_135851.txt



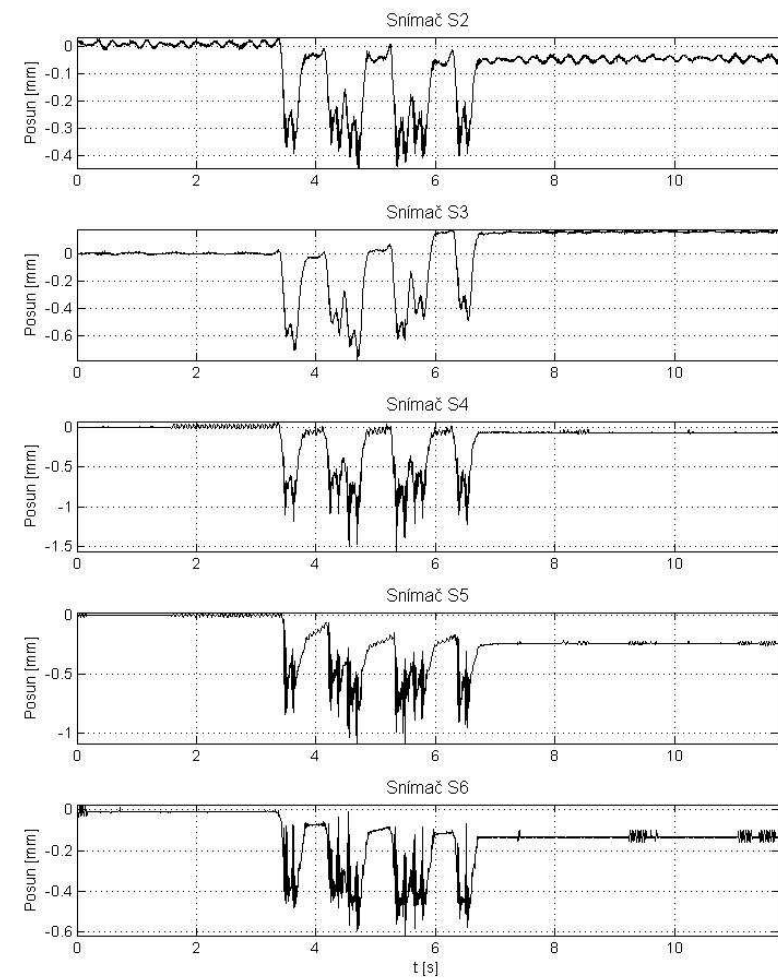
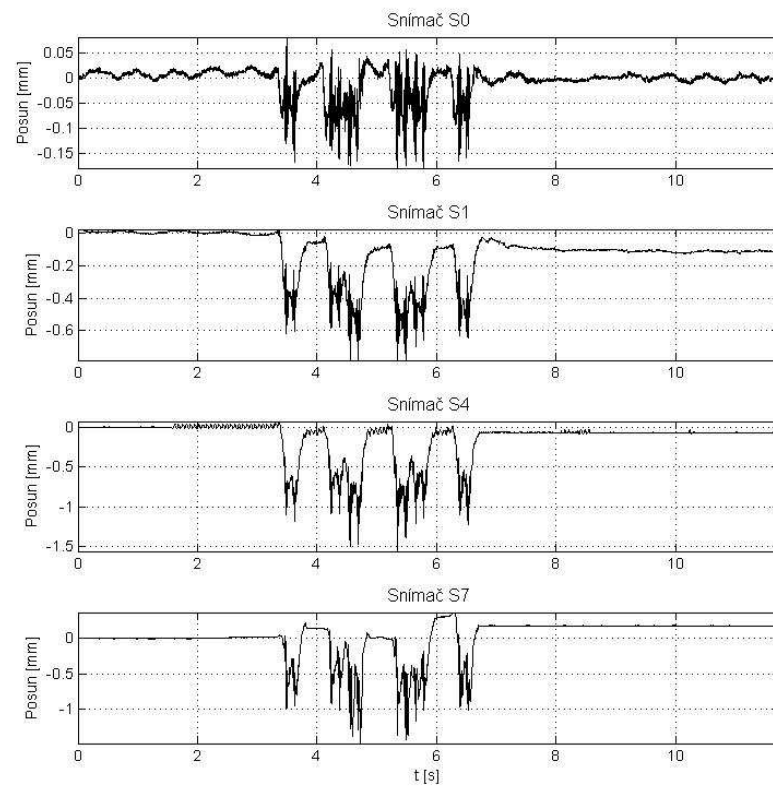
13. 163 Regio Jet – 139 km/h

I:\59\13_Vlak_2013_03_25_140552.txt



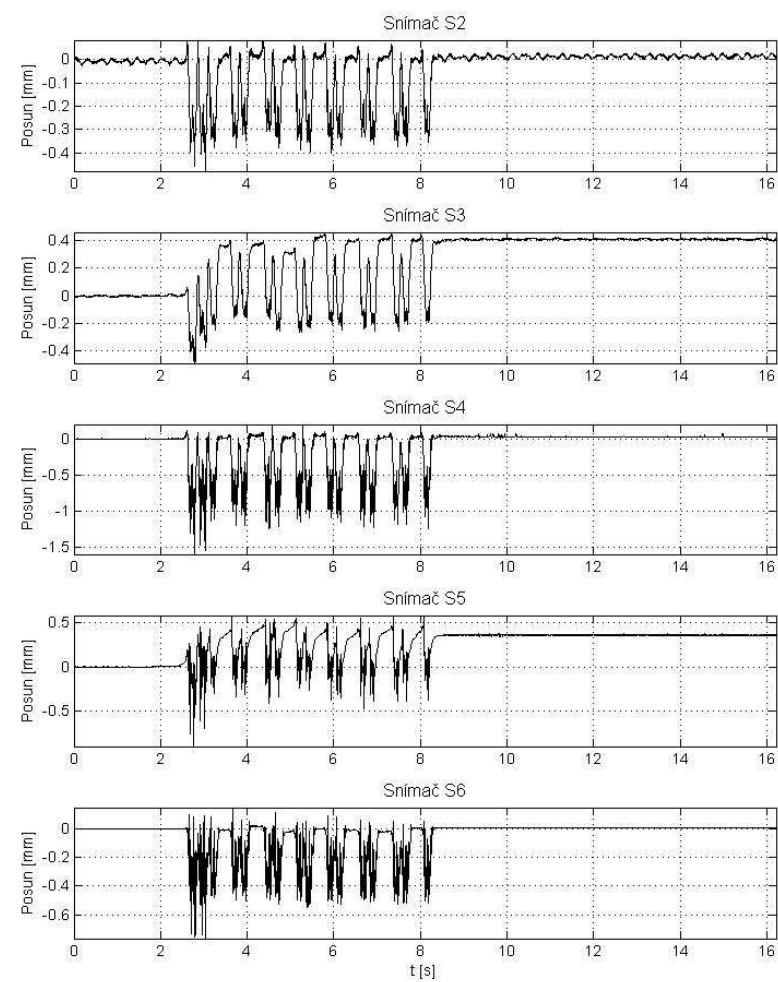
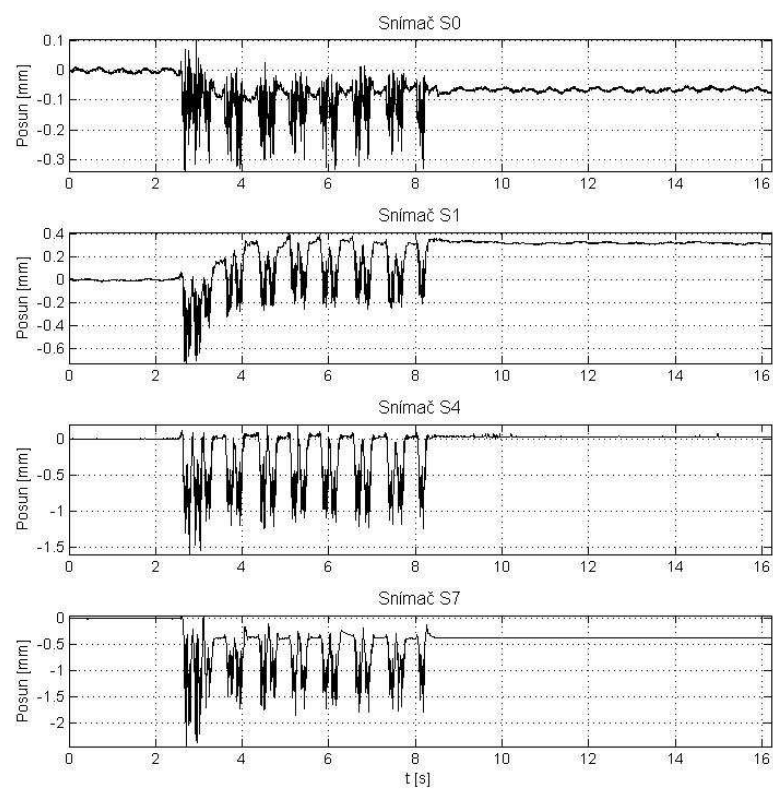
14. PKP EM57 – 67 km/h

I:\59\14_Vlak_2013_03_25_140824.txt



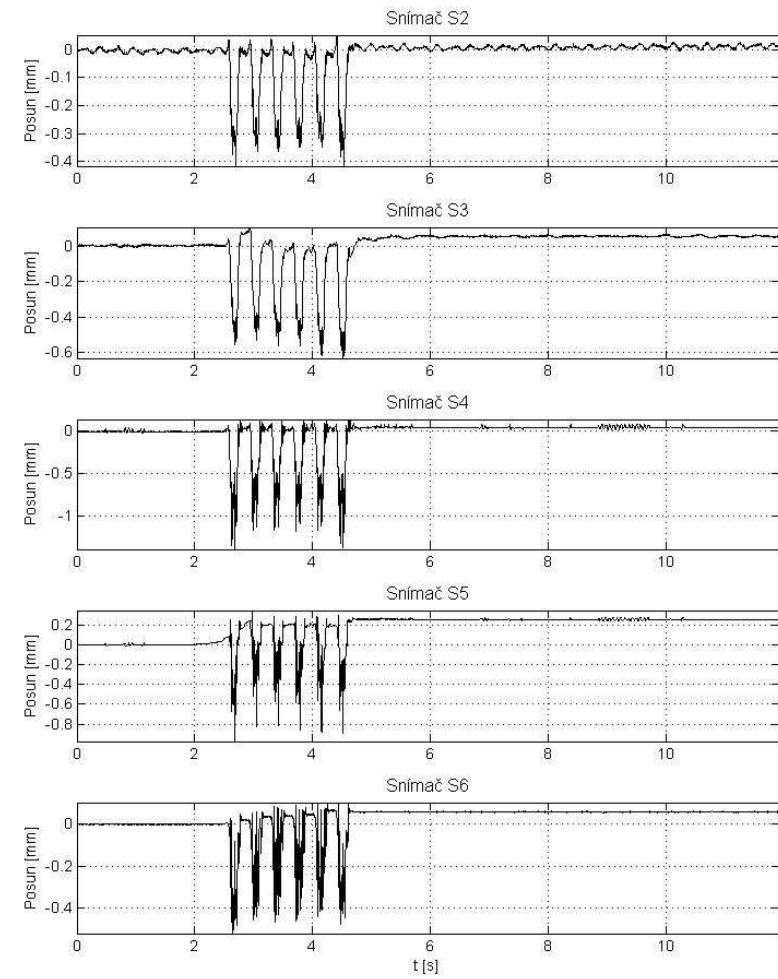
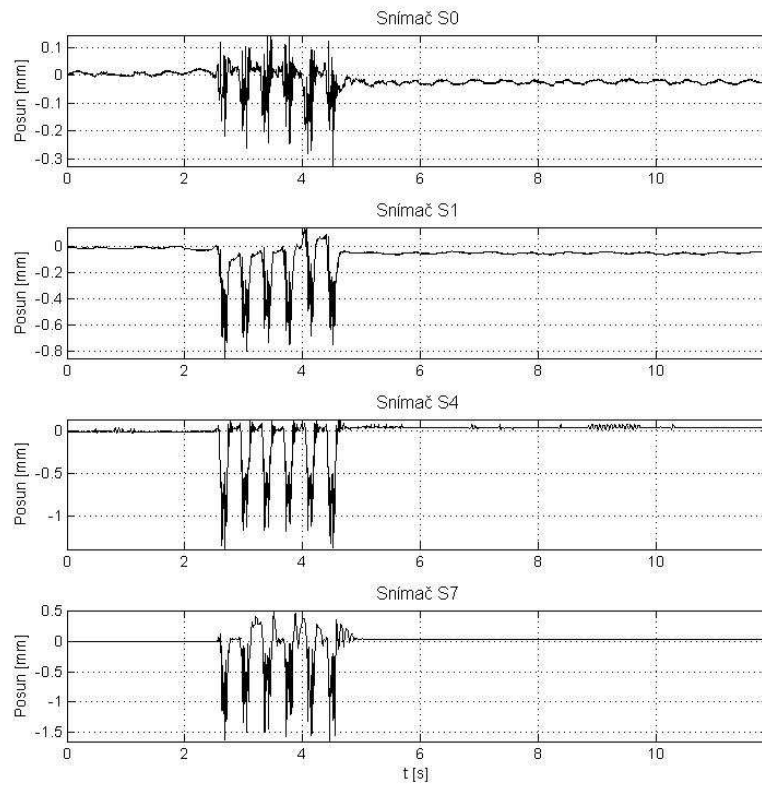
15. Loko 151 - 120 km/h

I:\59\15_Vlak_2013_03_25_141926.txt



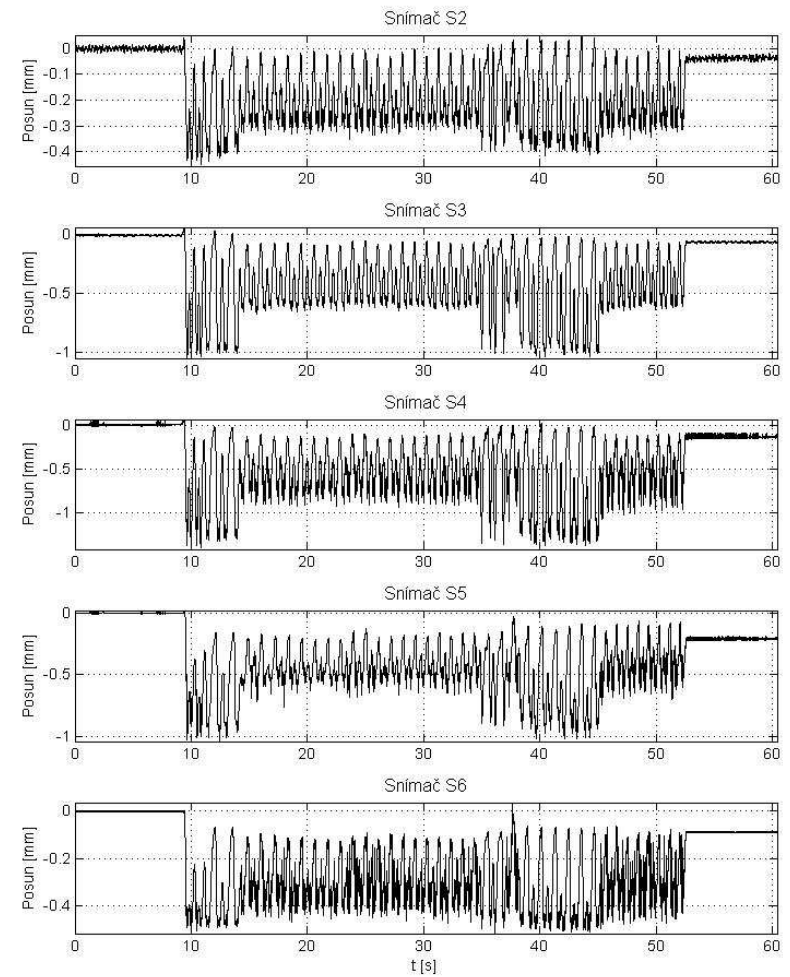
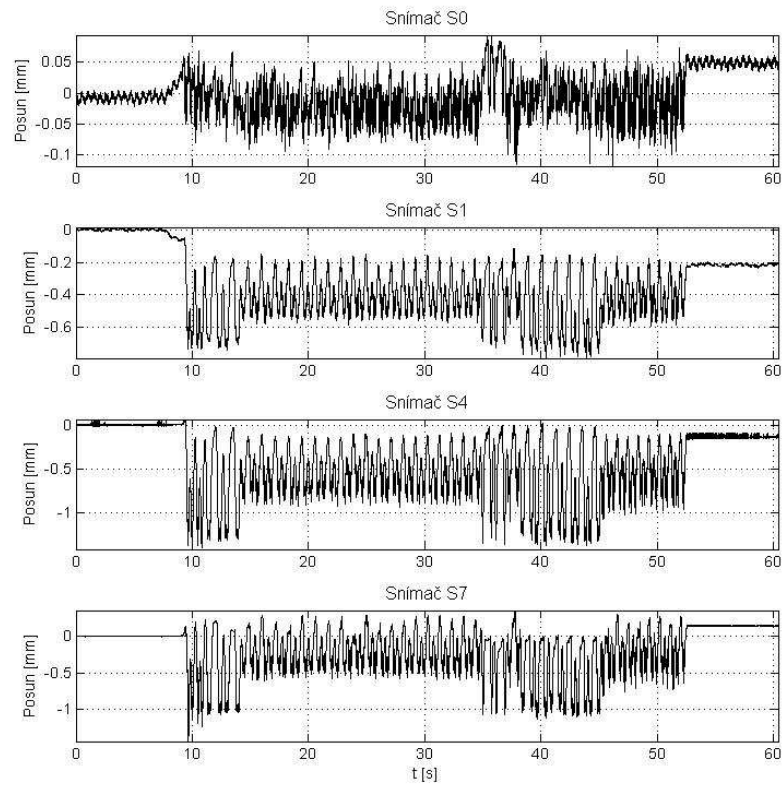
16. Leo Express – 156 km/h

I:\59\16_Vlak_2013_03_25_142249.txt



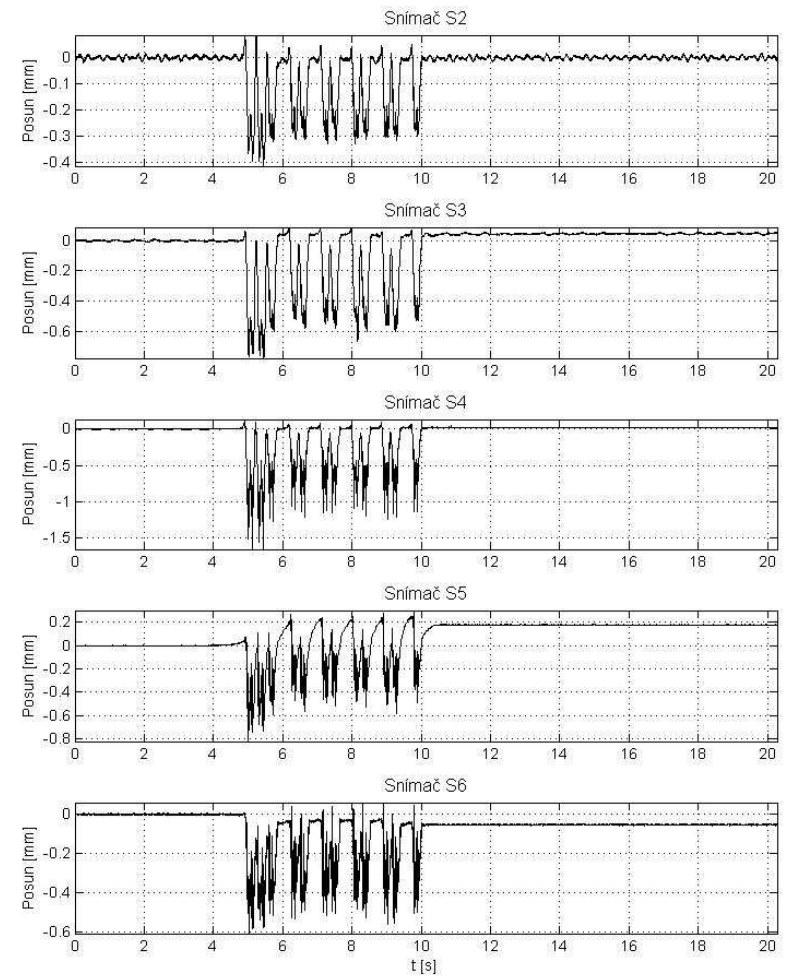
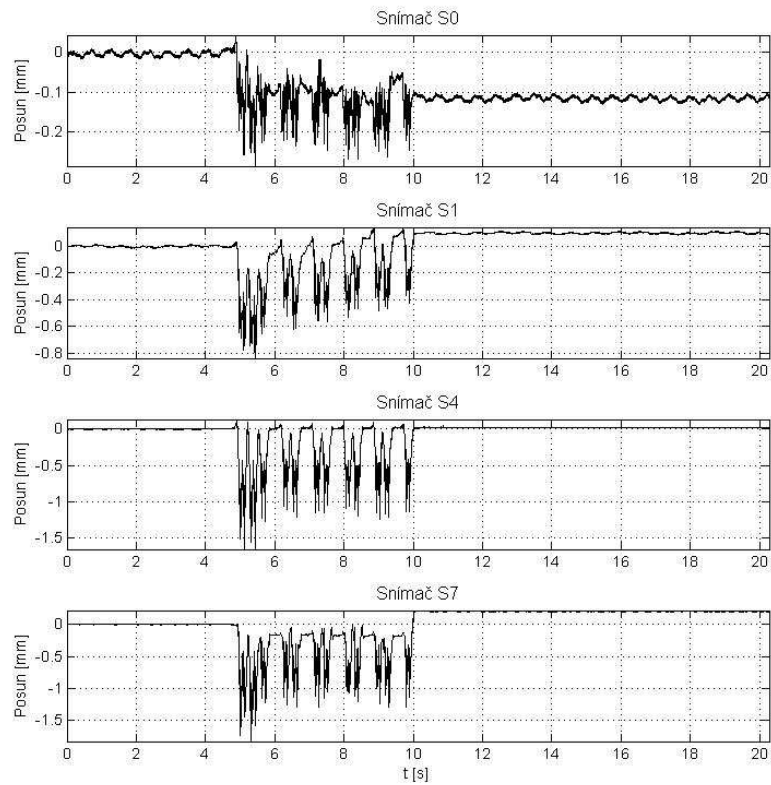
17. Loko 242 náklad – 33 km/h

I:\59\17_Vlak_2013_03_25_142517.txt



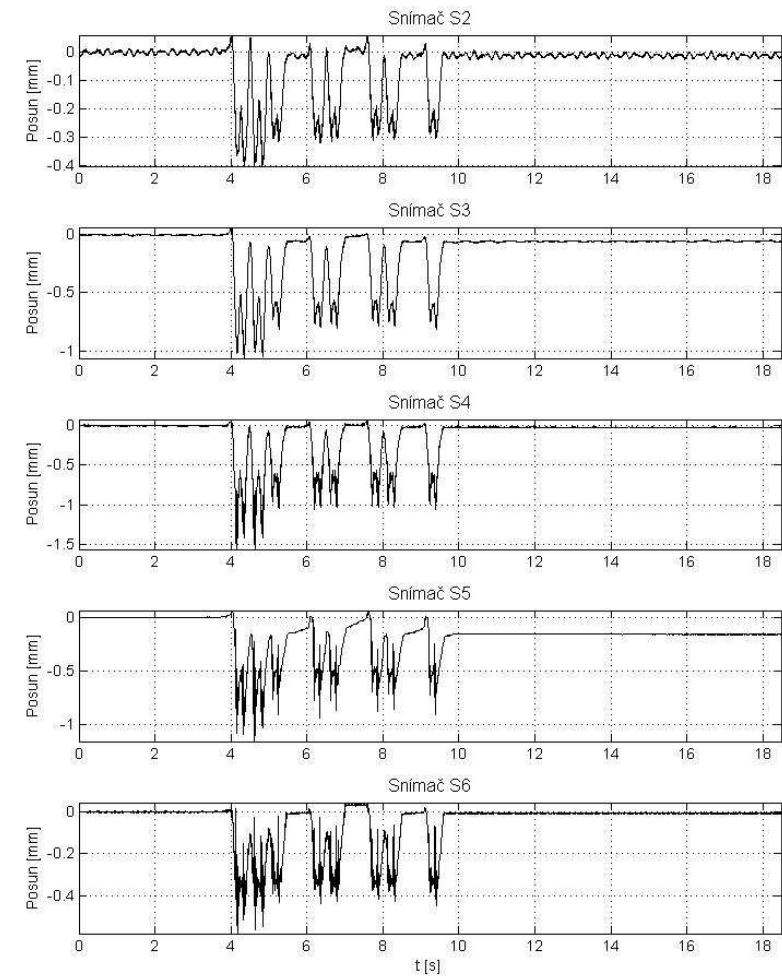
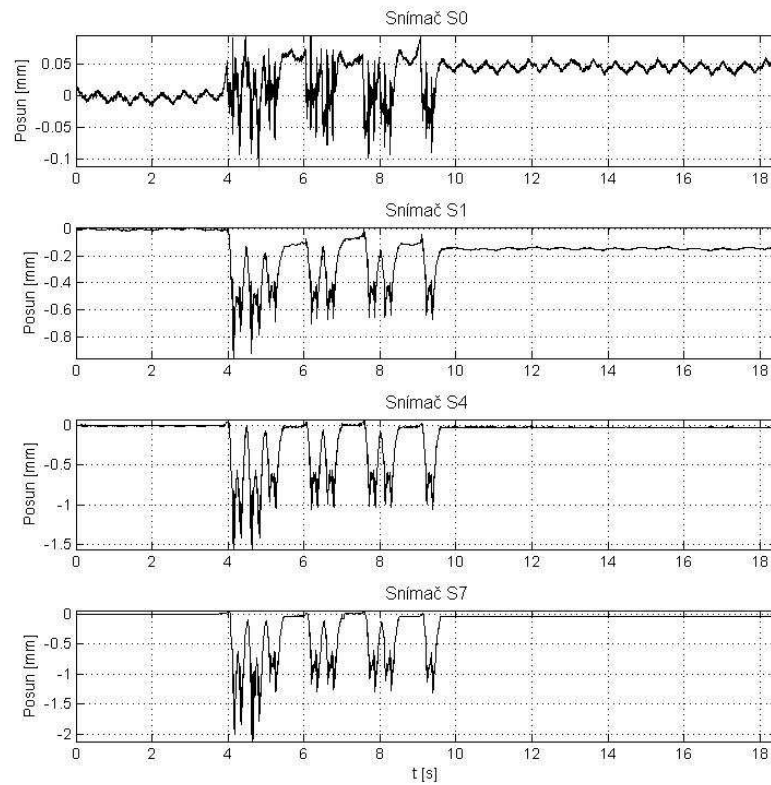
18. Loko 362 – 88 km/h

I:\59\18_Vlak_2013_03_25_143856.txt



19. Loko 163 Os – 61 km/h

I:\59\19_2013_03_25_144047.txt



20. Loko 363 – náklad 40 km/h

I:\59\20_2013_03_25_144314.txt

