

# VytahVizu1

## FACTORYTALK VIEW APPLICATION DOCUMENTATION

May 12, 2014

### TABLE OF CONTENTS

<b>1</b>	<b>VYTAHVIZU1</b>	<b>3</b>
1.1	RSLINX ENTERPRISE	4
1.2	VYTAHVIZU1	5
1.2.1	SYSTEMS	6
1.2.1.1	Systems\Project Settings	6
1.2.1.2	Systems\Runtime Security	6
1.2.1.3	Systems\Diagnostics List Setup	6
1.2.1.4	Systems\GlobalConnections	6
1.2.1.5	Systems\Startup	7
1.2.2	TAG DATABASE	8
1.2.2.1	Tags\Tag List	8
1.2.2.2	Tags\Tags Cross Reference	8
1.2.3	GRAPHICS	10
1.2.3.1	Graphics\Displays	10
1.2.3.1.1	Graphics\Displays\{INFORMATION}	10
1.2.3.1.2	Graphics\Displays\{ALARM}	11
1.2.3.1.3	Graphics\Displays\{DIAGNOSTICS}	12
1.2.3.1.4	Graphics\Displays\MAIN	13
1.2.3.1.5	Graphics\Displays\Z_ALARMY	17
1.2.3.1.6	Graphics\Displays\Z_CLOSE_VIZU	19
1.2.3.1.7	Graphics\Displays\Z_DIA_IO	20
1.2.3.1.8	Graphics\Displays\Z_KONTAKT	37
1.2.3.1.9	Graphics\Displays\Z_SIT_ASI	38
1.2.3.1.10	Graphics\Displays\A_MANUAL	41
1.2.3.1.11	Graphics\Displays\A_HLAVNI	44
1.2.3.1.12	Graphics\Displays\Z_DIA_PLC	47
1.2.3.1.13	Graphics\Displays\A_SIM	51
1.2.3.2.13	Graphics\GlobalObjects	54
1.2.3.3.13	Graphics\Images	54
1.2.3.3.14	Graphics\Images\Arrow Down	55
1.2.3.3.15	Graphics\Images\Arrow Left	56
1.2.3.3.16	Graphics\Images\Arrow Right	57
1.2.3.3.17	Graphics\Images\Arrow Up	58
1.2.3.3.18	Graphics\Images\Backspace	59
1.2.3.3.19	Graphics\Images\End	60
1.2.3.3.20	Graphics\Images\Enter	61
1.2.3.3.21	Graphics\Images\Home	62
1.2.3.3.22	Graphics\Images\Page Down	63
1.2.3.3.23	Graphics\Images\Page Up	64
1.2.3.3.24	Graphics\Images\_AC_neco	65
1.2.3.3.25	Graphics\Images\_AC2258	66
1.2.3.3.26	Graphics\Images\_ac2618	67
1.2.3.3.27	Graphics\Images\_ig5886	68
1.2.3.3.28	Graphics\Images\_motor	69
1.2.3.3.29	Graphics\Images\_PLC	70
1.2.3.3.30	Graphics\Images\_powerflex40	71
1.2.3.3.31	Graphics\Images\_stop_but	72
1.2.3.3.32	Graphics\Images\exit_X	73
1.2.3.3.33	Graphics\Images\info_i	74
1.2.3.3.34	Graphics\Images\kabina_vytah	75
1.2.3.3.35	Graphics\Images\print	76
1.2.3.3.36	Graphics\Images\motor	77
1.2.3.3.37	Graphics\Images\_pc	78
1.2.3.3.38	Graphics\Images\AC2482	79
1.2.3.3.39	Graphics\Images\vut_logo	80
1.2.3.4.39	Graphics\Parameters	80
1.2.3.5.39	Graphics\Local Messages	80
1.2.4	ALARMS	81
1.2.4.1	Alarms\Alarm Setup	81
1.2.5	INFORMATION	83
1.2.5.1	Information\Information Setup	83
1.2.5.2	Information\Information Messages	83
1.2.6	LOGIC AND CONTROL	84
1.2.6.1	LogicControl\Macros	84
1.2.7	DATALOG	85
1.2.7.1	Datalog\Datalog Models	85
1.2.8	RECIPEPLUS	86
1.2.8.1	RecipePlus\RecipePlus Setup	86
1.2.8.2	RecipePlus\RecipePlus Editor	86

1.2.9	DIRECT TAGS . . . . .	87
1.2.9.1	Direct Tags\Direct Tags Cross Reference . . . . .	87

VytahVizu1

FACTORYTALK VIEW APPLICATION DOCUMENTATION

May 12, 2014

1 VYTAHVIZU1

<u>Name</u>	<u>Description</u>
-------------	--------------------

VytahVizu1	
------------	--

## 1.1 RSLINX ENTERPRISE

### 1.1.1 Properties

<u>Primary Server</u>	<u>Server Type</u>
localhost	RSLinxEnterprise.OPCServer. 1

### 1.1.2 Device Shortcuts

<u>Shortcut Name</u>	<u>Local Device</u>	<u>Target Device</u>
PLC1	1756-A4/A.Vyta h	1756-A4/A.Vyta h

## 1.2 VYTAHVIZU1

<u>Properties</u>	<u>Value</u>
Name	VytahVizu1
Description	
Project file	C:\Users\Public\Documents\RSView Enterprise\ME\HMI Projects\VytahVizu1
Number of displays	13
Licensed maximum	500

1.2.1 SYSTEMS

1.2.1.1 Systems\Project Settings

1.2.1.1.1 General

Option	Selection
Project window size	1280*1024
Width	1280
Height	1024
Compact Machine Edition application	NO

1.2.1.1.2 Runtime

Option	Selection	Content
Title Bar	NO	
Border	NO	
Control Box	NO	
Minimize button	NO	
Project window position: Top	0	
Project window position: Left	0	
Enable auto logout	YES	
Inactivity period (minutes)	5	
Return to graphic on logout	YES	MAIN
Parameter file for graphic	YES	
Parameter list for graphic	NO	

1.2.1.1.3 Tags used by Component

Tag Name	Tag Type	Tag Description
----------	----------	-----------------

1.2.1.2 Systems\Runtime Security

1.2.1.2.1 ME Runtime 4.0 and later

AccountID	Login Macro	Logout Macro	A	B	C	D	E	F	G	H	I	J	K	L	M	N	O	P
DEFAULT			Y	Y	Y	Y	Y	Y	Y	Y	Y	Y	Y	Y	N	N	N	N
[\$Administrators]			Y	Y	Y	Y	Y	Y	Y	Y	Y	Y	Y	Y	Y	Y	Y	Y

1.2.1.2.2 ME Runtime 3.20 and earlier

AccountID	Login Macro	Logout Macro	A	B	C	D	E	F	G	H	I	J	K	L	M	N	O	P
DEFAULT			Y	Y	Y	Y	Y	Y	Y	Y	Y	Y	Y	Y	Y	Y	Y	Y

1.2.1.3 Systems\Diagnostics List Setup

1.2.1.3.1 Log Messages to printer when

Option	Selection
Error occur	NO
Warning occur	NO
Information occur	NO
Audit occur	NO

1.2.1.3.2 Runtime display

Option	Selection
Display name	[DIAGNOSTICS]
Error occur	YES
Warning occur	YES
Information occur	NO
Audit occur	NO
Maximum number of messages	200

1.2.1.4 Systems\GlobalConnections

1.2.1.4.1 General

Option	Selection
Date and time output interval(seconds)	60
Maximum update rate	1000 millisecond

1.2.1.4.2 Connection

<u>Connection</u>	<u>Tag or Expression</u>
Replace Display Number	
Display Print Active	
Year	
Day of Week	
Month	
Day of Month	
Hour	
Minute	
Second	
Remote Display Number	
Remote Display Print	
Remote Date and Time	
Remote Year	
Remote Month	
Remote Day of Month	
Remote Hour	
Remote Minute	
Remote Second	
Remote Backlight Intensity	
Remote Macro1	
Remote Macro2	
Remote Macro3	
Remote Macro4	
Remote Macro5	
MERuntime RAM Usage	
Total RAM Usage	
Available RAM	
Remote RAM Usage	
Close an On Top Display	
Close All On Top Displays	
Parameter File	
Use Parameter List	
Parameter Tag #1:	
Parameter Tag #2:	
Parameter Tag #3:	
Parameter Tag #4:	
Parameter Tag #5:	
Parameter Tag #6:	
Parameter Tag #7:	
Parameter Tag #8:	
Parameter Tag #9:	
Parameter Tag #10:	

1.2.1.4.3 Tags used by Component

<u>Tag Name</u>	<u>Tag Type</u>	<u>Tag Description</u>
-----------------	-----------------	------------------------

1.2.1.5 Systems\Startup

1.2.1.5.1 Start when project is run

<u>Option</u>	<u>Selection</u>	<u>Content</u>
Alarms	YES	
Information messages	NO	
Data logging	NO	
Startup macro	NO	
Shutdown macro	NO	
Initial graphic	YES	MAIN
Parameter file for the initial graphic	YES	
Parameter list for the initial graphic	NO	

1.2.1.5.2 Tags used by Component

<u>Tag Name</u>	<u>Tag Type</u>	<u>Tag Description</u>
-----------------	-----------------	------------------------

1.2.2 TAG DATABASE

1.2.2.1 Tags\Tag List

1.2.2.1.1 Summary

Option	Total number
Tags	23
Device tags	1
Device analog tags	1
Device digital tags	0
Device string tags	0
Memory tags	5
Memory analog tags	0
Memory digital tags	5
Memory string tags	0

1.2.2.1.2 Analog Tag List

Tag Name	Tag Type	Tag Description	Minimum	Maximum	Data Source	Initial Value	Retentive	Address	Scale	Offset	Data Type
system\DateAndTimeInteger	Analog Tags	System date and time integer	0.00	2147395600.00	System Tag	--	--	--	1.00	0.00	Long Integer
system\DayOfMonth	Analog Tags	Day of Month	1.00	31.00	System Tag	--	--	--	1.00	0.00	Unsigned Integer
system\DayOfWeek	Analog Tags	Day of Week (Sunday = 1)	1.00	7.00	System Tag	--	--	--	1.00	0.00	Unsigned Integer
system\DayOfYear	Analog Tags	Day of Year	1.00	366.00	System Tag	--	--	--	1.00	0.00	Unsigned Integer
system\Hour	Analog Tags	Hour of day (0 - 23)	0.00	23.00	System Tag	--	--	--	1.00	0.00	Unsigned Integer
system\Minute	Analog Tags	Minutes (0 - 59)	0.00	59.00	System Tag	--	--	--	1.00	0.00	Unsigned Integer
system\Month	Analog Tags	Month	1.00	12.00	System Tag	--	--	--	1.00	0.00	Unsigned Integer
system\Second	Analog Tags	Seconds (0 - 59)	0.00	59.00	System Tag	--	--	--	1.00	0.00	Unsigned Integer
system\Year	Analog Tags	Year	0.00	32000.00	System Tag	--	--	--	1.00	0.00	Unsigned Integer
TAG3	Analog Tags	Testovaci analog	0.00	10000.00	Device Tag	--	--	::[PLC]Program:MainProgram.VIZU_VYP0	1.00	0.00	(Default)

1.2.2.1.3 Digital Tag List

Tag Name	Tag Type	Tag Description	Data Source	Initial Value	Retentive	Address
LOG0	Digital Tags		Memory Tag	NO	YES	--
LOG1	Digital Tags		Memory Tag	YES	YES	--
system\BlinkFast	Digital Tags	Changes every 100 ms	System Tag	--	--	--
system\BlinkSlow	Digital Tags	Changes every 500 ms	System Tag	--	--	--
TAG1	Digital Tags	Jen pro zapis hodonoty, nevyužívá se	Memory Tag	NO	NO	--
TAG2	Digital Tags	TESTOVACI	Memory Tag	NO	NO	--
Test1	Digital Tags	Smazat!	Memory Tag	YES	YES	--

1.2.2.1.4 String Tag List

Tag Name	Tag Type	Tag Description	Length	Data Source	Initial Value	Retentive	Address
system\AlarmResetDateAndTimeString	String Tags	Date and time string of last Alarm Status reset	48	System Tag	--	--	--
system\Date	String Tags	System date string	48	System Tag	--	--	--
system\DateAndTimeString	String Tags	System date and time string	48	System Tag	--	--	--
system\MonthString	String Tags	Month as string	48	System Tag	--	--	--
system\Time	String Tags	System time string	48	System Tag	--	--	--
system\User	String Tags	Currently logged on User	82	System Tag	--	--	--

1.2.2.2 Tags\Tags Cross Reference

1.2.2.2.1 Tag Cross Reference

Tag Name	Tag Type	Tag Description	Component Type	Component Name	Object Name
LOG0	Digital Tags		Displays	MAIN	LatchedPushButton1
.	.	.	Displays	MAIN	LatchedPushButton10
.	.	.	Displays	MAIN	LatchedPushButton11
.	.	.	Displays	MAIN	LatchedPushButton12
.	.	.	Displays	MAIN	LatchedPushButton13
.	.	.	Displays	MAIN	LatchedPushButton14
.	.	.	Displays	MAIN	LatchedPushButton2
.	.	.	Displays	MAIN	LatchedPushButton3
.	.	.	Displays	MAIN	LatchedPushButton4
.	.	.	Displays	MAIN	LatchedPushButton5
.	.	.	Displays	MAIN	LatchedPushButton6
.	.	.	Displays	MAIN	LatchedPushButton7
.	.	.	Displays	MAIN	LatchedPushButton8
.	.	.	Displays	MAIN	LatchedPushButton9
.	.	.	Displays	Z_SIT_ASI	Polygon11
.	.	.	Displays	Z_SIT_ASI	Polygon12
.	.	.	Displays	Z_SIT_ASI	Polygon4
.	.	.	Displays	Z_SIT_ASI	Polygon8
.	.	.	Displays	A_SIM	LatchedPushButton1



Tag Name	Tag Type	Tag Description	Component Type	Component Name	Object Name
.	.	.	Displays	A_SIM	LatchedPushButton10
.	.	.	Displays	A_SIM	LatchedPushButton11
.	.	.	Displays	A_SIM	LatchedPushButton12
.	.	.	Displays	A_SIM	LatchedPushButton13
.	.	.	Displays	A_SIM	LatchedPushButton14
.	.	.	Displays	A_SIM	LatchedPushButton2
.	.	.	Displays	A_SIM	LatchedPushButton3
.	.	.	Displays	A_SIM	LatchedPushButton4
.	.	.	Displays	A_SIM	LatchedPushButton5
.	.	.	Displays	A_SIM	LatchedPushButton6
.	.	.	Displays	A_SIM	LatchedPushButton7
.	.	.	Displays	A_SIM	LatchedPushButton8
.	.	.	Displays	A_SIM	LatchedPushButton9
TAG1	Digital Tags	Jen pro zapis hodonoty, nevyuzivá se	Displays	MAIN	LatchedPushButton1
.	.	.	Displays	MAIN	LatchedPushButton10
.	.	.	Displays	MAIN	LatchedPushButton11
.	.	.	Displays	MAIN	LatchedPushButton12
.	.	.	Displays	MAIN	LatchedPushButton13
.	.	.	Displays	MAIN	LatchedPushButton14
.	.	.	Displays	MAIN	LatchedPushButton2
.	.	.	Displays	MAIN	LatchedPushButton3
.	.	.	Displays	MAIN	LatchedPushButton4
.	.	.	Displays	MAIN	LatchedPushButton5
.	.	.	Displays	MAIN	LatchedPushButton6
.	.	.	Displays	MAIN	LatchedPushButton7
.	.	.	Displays	MAIN	LatchedPushButton8
.	.	.	Displays	MAIN	LatchedPushButton9
.	.	.	Displays	A_SIM	LatchedPushButton14
.	.	.	Displays	A_SIM	LatchedPushButton3
.	.	.	Displays	A_SIM	LatchedPushButton9

1.2.2.2.2 Unused Tag Info

Tag Name	Tag Type	Tag Description
LOG1	Digital Tags	
system\AlarmResetDateAndTimeString	String Tags	Date and time string of last Alarm Status reset
system\BlinkFast	Digital Tags	Changes every 100 ms
system\BlinkSlow	Digital Tags	Changes every 500 ms
system\Date	String Tags	System date string
system\DateAndTimeInteger	Analog Tags	System date and time integer
system\DateAndTimeString	String Tags	System date and time string
system\DayOfMonth	Analog Tags	Day of Month
system\DayOfWeek	Analog Tags	Day of Week (Sunday = 1)
system\DayOfYear	Analog Tags	Day of Year
system\Hour	Analog Tags	Hour of day (0 - 23)
system\Minute	Analog Tags	Minutes (0 - 59)
system\Month	Analog Tags	Month
system\MonthString	String Tags	Month as string
system\Second	Analog Tags	Seconds (0 - 59)
system\Time	String Tags	System time string
system\User	String Tags	Currently logged on User
system\Year	Analog Tags	Year
TAG2	Digital Tags	TESTOVACI
TAG3	Analog Tags	Testovaci analog
Test1	Digital Tags	Smazat!

1.2.3 GRAPHICS

1.2.3.1 Graphics\Displays

1.2.3.1.1 Graphics\Displays\[[INFORMATION]]



1.2.3.1.1.1 Graphics[[INFORMATION]]Display Settings|General

<u>Option</u>	<u>Selection</u>
Display Type	On Top Cannot Be Replaced
Security Code	*
Title Bar	NO
Disable Initial Input Focus	NO
Maximum Tag Update Rate	1.00 seconds
Size	Specify Size in Pixels
Specify Size Width	1280
Specify Size Height	170
Position X	0
Position Y	373
Background Color	0xC0C0C0

1.2.3.1.1.2 Graphics[[INFORMATION]]Display Settings|Behavior

<u>Option</u>	<u>Selection</u>
Startup Command	
Shutdown Command	
Disable Highlight When Object has Focus	NO
Highlight Color of Objects with Input Focus	0x00FF00

1.2.3.1.1.3 Animated Display Objects

<u>Object Name</u>	<u>Grouping</u>	<u>X</u>	<u>Y</u>	<u>Property</u>	<u>Expression</u>
CloseDisplayButton	1150	1	1	Close Display Button :Key Assignment	F2
InformationAckButton	1022	1	1	ActiveX Control :Key Assignment	F1

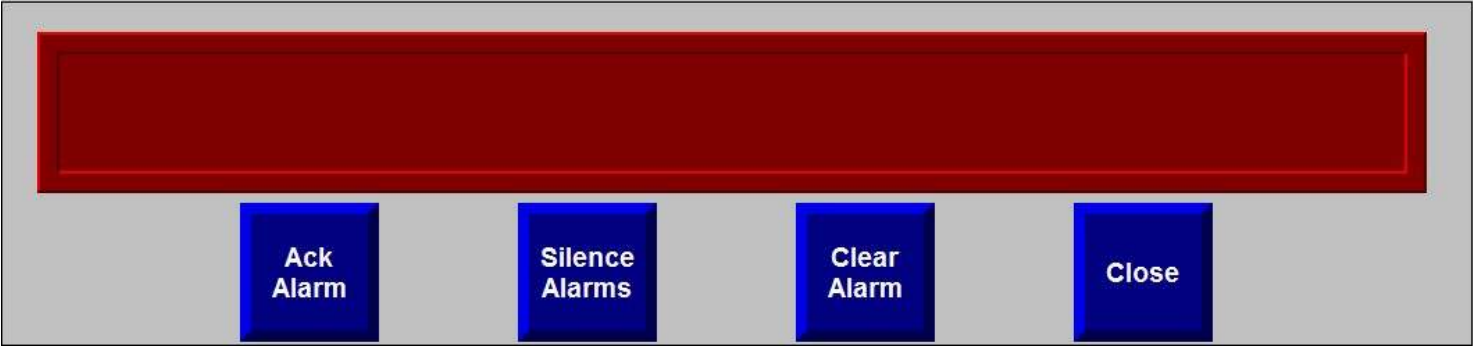
1.2.3.1.1.4 Object Properties

<u>Object Name</u>	<u>Grouping</u>	<u>X</u>	<u>Y</u>
InformationMessageDisplay	4	1	1

1.2.3.1.1.5 Tags used by Component

<u>Tag Name</u>	<u>Tag Type</u>	<u>Tag Description</u>
-----------------	-----------------	------------------------

1.2.3.1.2 Graphics\Displays\[ALARM]



1.2.3.1.2.1 Graphics|[ALARM]|Display Settings|General

Option	Selection
Display Type	On Top Cannot Be Replaced
Security Code	*
Title Bar	NO
Disable Initial Input Focus	NO
Maximum Tag Update Rate	1.00 seconds
Size	Specify Size in Pixels
Specify Size Width	1060
Specify Size Height	249
Position X	0
Position Y	0
Background Color	0xC0C0C0

1.2.3.1.2.2 Graphics|[ALARM]|Display Settings|Behavior

Option	Selection
Startup Command	
Shutdown Command	
Disable Highlight When Object has Focus	NO
Highlight Color of Objects with Input Focus	0x00FF00

1.2.3.1.2.3 Animated Display Objects

Object Name	Grouping	X	Y	Property	Expression
CloseDisplayButton		772	146	Close Display Button :Key Assignment	F4
ClearAlarmButton		572	146	ActiveX Control :Key Assignment	F3
SilenceAlarmsButton		372	146	ActiveX Control :Key Assignment	F2
AcknowledgeAlarmButton		172	146	ActiveX Control :Key Assignment	F1

1.2.3.1.2.4 Object Properties

Object Name	Grouping	X	Y
Polygon1		0	1
AlarmBanner1		26	23

1.2.3.1.2.5 Tags used by Component

Tag Name	Tag Type	Tag Description
----------	----------	-----------------

1.2.3.1.3 Graphics\Displays\[DIAGNOSTICS]



1.2.3.1.3.1 Graphics\[DIAGNOSTICS]\Display Settings|General

Option	Selection
Display Type	On Top Cannot Be Replaced
Security Code	*
Title Bar	NO
Disable Initial Input Focus	NO
Maximum Tag Update Rate	1.00 seconds
Size	Specify Size in Pixels
Specify Size Width	1280
Specify Size Height	341
Position X	0
Position Y	21
Background Color	0xC0C0C0

1.2.3.1.3.2 Graphics\[DIAGNOSTICS]\Display Settings|Behavior

Option	Selection
Startup Command	
Shutdown Command	
Disable Highlight When Object has Focus	NO
Highlight Color of Objects with Input Focus	0x00FF00

1.2.3.1.3.3 Animated Display Objects

Object Name	Grouping	X	Y	Property	Expression
CloseDisplayButton		1024	171	Close Display Button :Key Assignment	F5
MoveDownButton		896	171	Move Down Button :Key Assignment	F4
MoveUpButton		768	171	Move Up Button :Key Assignment	F3
DiagnosticsClearAllButton		256	171	ActiveX Control :Key Assignment	F2
DiagnosticsClearButton		128	171	ActiveX Control :Key Assignment	F1

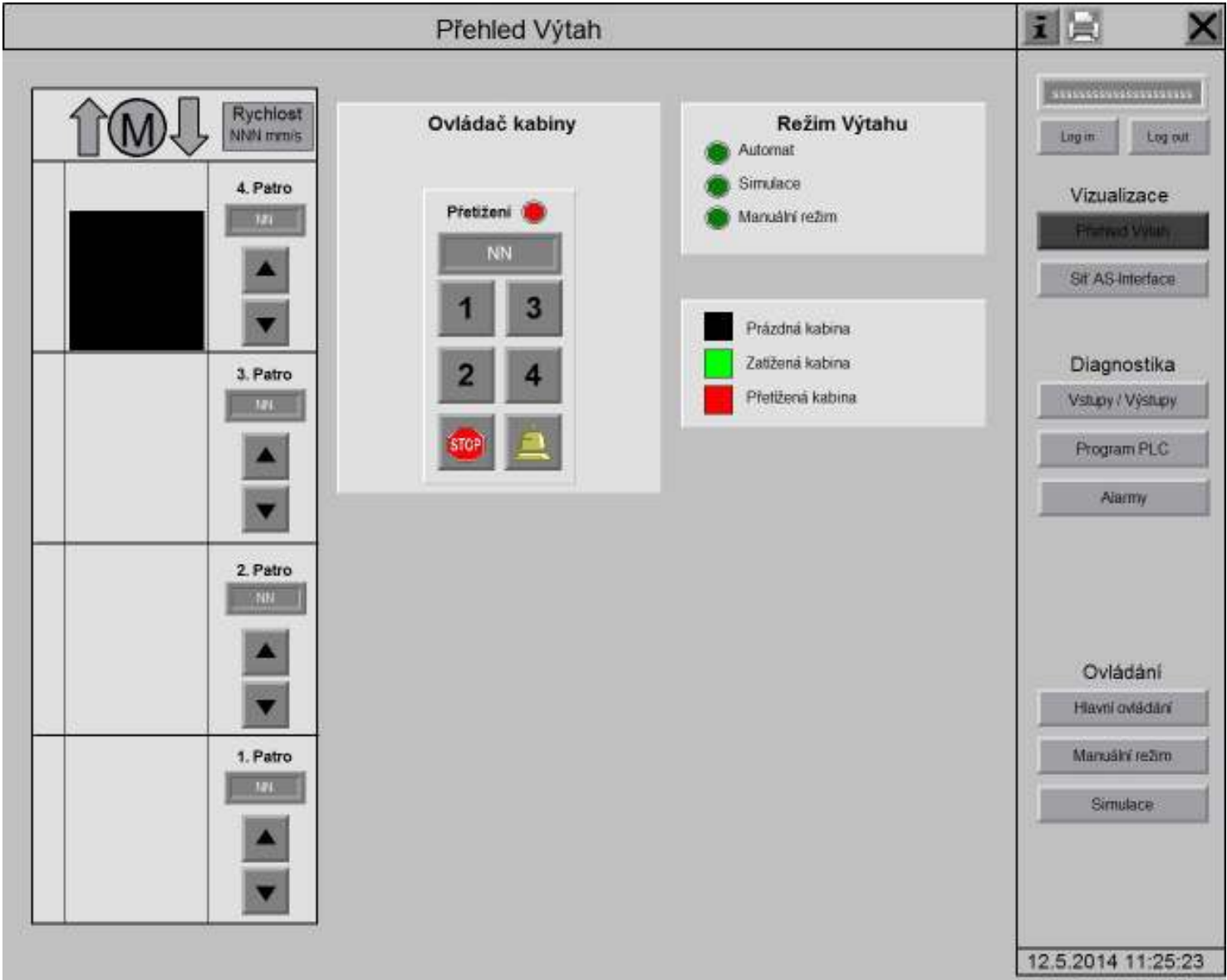
1.2.3.1.3.4 Object Properties

Object Name	Grouping	X	Y
DiagnosticsList		10	10

1.2.3.1.3.5 Tags used by Component

Tag Name	Tag Type	Tag Description
----------	----------	-----------------

1.2.3.1.4 Graphics\Displays\MAIN



1.2.3.1.4.1 Graphics|MAIN|Display Settings|General

Option	Selection
Display Type	Replace
Display Number	1
Security Code	*
Disable Initial Input Focus	NO
Maximum Tag Update Rate	0.10 seconds
Background Color	0xC0C0C0

1.2.3.1.4.2 Graphics|MAIN|Display Settings|Behavior

Option	Selection
Startup Command	
Shutdown Command	
Disable Highlight When Object has Focus	NO
Highlight Color of Objects with Input Focus	0x00FF00

1.2.3.1.4.3 Animated Display Objects

Object Name	Grouping	X	Y	Property	Expression
Polygon4		70	218	Polygon: Color Control	{:[PLC1]Program:MainProgram.INC_SNIMAC_ZATIZENI} 100-{:[PLC1]Program:MainProgram.VIZU_Pozice_Kabiny_proc2} {:[PLC1]Program:MainProgram.OUT_OVL_Patro} {:[PLC1]Program:MainProgram.OUT_OVL_Patro} {:[PLC1]Program:MainProgram.OUT_OVL_Patro}
.				Polygon: Vertical Position	
NumericDisplay5		233	606	Numeric Display: Connections: Value	
NumericDisplay4		232	804	Numeric Display: Connections: Value	
NumericDisplay3		232	404	Numeric Display: Connections: Value	
Group21	++Group21	440	195		
Group7	++Group7	543	207		

Object Name	Grouping	X	Y	Property	Expression
Polygon46		546	210	Polygon: Color Control	{::[PLC1]Program:MainProgram.VIZU_PRETIZENI}
Group7	+-Group7	543	207		
Group6	++Group6	440	195		
NumericDisplay8		455	240	Numeric Display: Connections: Value	{::[PLC1]Program:MainProgram.OUT_OVL_Patro}
LatchedPushButton14		525	430	Latched Push Button: Connections: Value	TAG1
.		.	.	Latched Push Button: Connections: Indicator	{::[PLC1]Program:MainProgram.INC_TL_ZVONEK}
.		.	.	Latched Push Button: Connections: Handshake	LOG0
LatchedPushButton13		455	430	Latched Push Button: Connections: Value	TAG1
.		.	.	Latched Push Button: Connections: Indicator	{::[PLC1]Program:MainProgram.INC_TL_STOP}
.		.	.	Latched Push Button: Connections: Handshake	LOG0
LatchedPushButton12		525	360	Latched Push Button: Connections: Value	TAG1
.		.	.	Latched Push Button: Connections: Indicator	{::[PLC1]Program:MainProgram.VIZU_TL_KAB4}
.		.	.	Latched Push Button: Connections: Handshake	LOG0
LatchedPushButton11		526	290	Latched Push Button: Connections: Value	TAG1
.		.	.	Latched Push Button: Connections: Indicator	{::[PLC1]Program:MainProgram.VIZU_TL_KAB3}
.		.	.	Latched Push Button: Connections: Handshake	LOG0
LatchedPushButton10		455	360	Latched Push Button: Connections: Value	TAG1
.		.	.	Latched Push Button: Connections: Indicator	{::[PLC1]Program:MainProgram.VIZU_TL_KAB2}
.		.	.	Latched Push Button: Connections: Handshake	LOG0
LatchedPushButton1		455	290	Latched Push Button: Connections: Value	TAG1
.		.	.	Latched Push Button: Connections: Indicator	{::[PLC1]Program:MainProgram.VIZU_TL_KAB1}
.		.	.	Latched Push Button: Connections: Handshake	LOG0
Group6	+-Group6	440	195		
Group21	+-Group21	440	195		
Group20	++Group20	735	180		
Polygon99		738	183	Polygon: Color Control	{::[PLC1]Program:MainProgram.MOD2}
Group20	+-Group20	735	180		
Group19	++Group19	735	213		
Polygon96		738	216	Polygon: Color Control	{::[PLC1]Program:MainProgram.MOD0}
Group19	+-Group19	735	213		
Group17	++Group17	735	145		
Polygon90		738	148	Polygon: Color Control	{::[PLC1]Program:MainProgram.MOD1}
Group17	+-Group17	735	145		
NumericDisplay7		232	124	Numeric Display: Connections: Value	{::[PLC1]Program:MainProgram.VIZU_MOT_RYCHLOST}
Polygon18		174	99	Polygon: Color Control	{::[PLC1]Program:MainProgram.OUT_OVL_SMER_DOLU}
Polygon8		69	99	Polygon: Color Control	{::[PLC1]Program:MainProgram.OUT_OVL_SMER_NAHORU}
Group4	++Group4	110	100		
Ellipse1		110	100	Ellipse: Color Control	{::[PLC1]Program:MainProgram.OUT_OVL_Mot}
Group4	+-Group4	110	100		
NumericDisplay6		232	210	Numeric Display: Connections: Value	{::[PLC1]Program:MainProgram.OUT_OVL_Patro}
LatchedPushButton9		250	255	Latched Push Button: Connections: Value	TAG1
.		.	.	Latched Push Button: Connections: Indicator	{::[PLC1]Program:MainProgram.VIZU_TL_NAH4}
.		.	.	Latched Push Button: Connections: Handshake	LOG0
LatchedPushButton8		250	310	Latched Push Button: Connections: Value	TAG1
.		.	.	Latched Push Button: Connections: Indicator	{::[PLC1]Program:MainProgram.VIZU_TL_DOL4}
.		.	.	Latched Push Button: Connections: Handshake	LOG0
LatchedPushButton7		250	450	Latched Push Button: Connections: Value	TAG1
.		.	.	Latched Push Button: Connections: Indicator	{::[PLC1]Program:MainProgram.VIZU_TL_NAH3}
.		.	.	Latched Push Button: Connections: Handshake	LOG0
LatchedPushButton6		250	505	Latched Push Button: Connections: Value	TAG1
.		.	.	Latched Push Button: Connections: Indicator	{::[PLC1]Program:MainProgram.VIZU_TL_DOL3}
.		.	.	Latched Push Button: Connections: Handshake	LOG0
LatchedPushButton5		250	655	Latched Push Button: Connections: Value	TAG1
.		.	.	Latched Push Button: Connections: Indicator	{::[PLC1]Program:MainProgram.VIZU_TL_NAH2}
.		.	.	Latched Push Button: Connections: Handshake	LOG0
LatchedPushButton4		250	710	Latched Push Button: Connections: Value	TAG1
.		.	.	Latched Push Button: Connections: Indicator	{::[PLC1]Program:MainProgram.VIZU_TL_DOL2}
.		.	.	Latched Push Button: Connections: Handshake	LOG0
StringDisplay1		1082	75	String Display: Connections: Value	CurrentUserName( )
LatchedPushButton2		250	850	Latched Push Button: Connections: Value	TAG1
.		.	.	Latched Push Button: Connections: Indicator	{::[PLC1]Program:MainProgram.VIZU_TL_NAH1}
.		.	.	Latched Push Button: Connections: Handshake	LOG0
LatchedPushButton3		250	905	Latched Push Button: Connections: Value	TAG1
.		.	.	Latched Push Button: Connections: Indicator	{::[PLC1]Program:MainProgram.VIZU_TL_DOL1}
.		.	.	Latched Push Button: Connections: Handshake	LOG0

### 1.2.3.1.4.4 Object Properties

Object Name	Grouping	X	Y
Polygon19		734	401
Polygon7		734	363
Text18		778	331
Polygon6		734	324
GotoDisplayButton11		1082	819
Text17		445	115
Group21	++Group21	440	195
Group21		440	195
Group7	++Group7	543	207
Group7		543	207
Polygon45		544	208
Polygon44		543	207
Group7	+-Group7	543	207
Group6	++Group6	440	195
Group6		440	195
Group16	++Group16	465	445
Group16		465	445
Polygon87		486	458
Polygon86		495	458
Polygon85		469	456
Polygon84		477	456
Polygon83		484	456
Polygon82		494	456
Polygon81		466	446
Polygon80		465	445
Group16	+-Group16	465	445

<u>Object Name</u>	<u>Grouping</u>	<u>X</u>	<u>Y</u>
Group10	++Group10	535	440
Group10		535	440
Polygon79		543	450
Polygon78		540	448
Polygon77		537	471
Polygon76		535	470
Polygon75		554	440
Polygon74		553	440
Group10	+-Group10	535	440
Text11		465	210
Panel1		440	195
Group6	+-Group6	440	195
Group21	+-Group21	440	195
Panel4		350	105
Text16		770	215
Text15		770	180
Text14		770	145
Group20	++Group20	735	180
Group20		735	180
Polygon98		736	181
Polygon97		735	180
Group20	+-Group20	735	180
Group19	++Group19	735	213
Group19		735	213
Polygon95		736	214
Polygon94		735	213
Group19	+-Group19	735	213
Group17	++Group17	735	145
Group17		735	145
Polygon89		736	146
Polygon88		735	145
Group17	+-Group17	735	145
Text13		810	115
Panel3		710	105
Text12		240	105
Text10		275	130
Group4	++Group4	110	100
Group4		110	100
Text9		122	106
Group4	+-Group4	110	100
Text8		245	185
Polygon17		265	330
Polygon16		265	270
Text7		245	380
Polygon15		265	525
Polygon14		265	465
Text6		245	585
Polygon13		265	730
Polygon12		265	670
Text5		245	780
Polygon11		265	925
Polygon10		265	865
LogoutButton3		1177	120
LoginButton2		1082	120
GotoDisplayButton10		1082	768
GotoDisplayButton9		1082	718
Text4		1130	689
GotoDisplayButton8		1082	447
GotoDisplayButton6		1082	396
Text3		1117	367
GotoDisplayButton5		1083	498
GotoDisplayButton4		1082	269
GotoDisplayButton3		1082	219
Text2		1117	190
Text1		453	12
Polygon3		0	0
Polygon2		1060	0
GotoDisplayButton2		1066	5
DisplayPrintButton1		1111	5
GotoDisplayButton1		1236	5
TimeDateDisplay1		1060	989
Polygon1		1060	0
Polygon9		230	105
Group5	++Group5	29	89
Group5		29	89
Line8		328	89
Line7		29	89
Line6		30	89
Group1	++Group1	30	165
Group1		30	165
Polygon5		30	165
Line5		215	165
Line4		65	165
Line3		31	766
Line2		31	565
Line1		30	365
Group1	+-Group1	30	165
Group5	+-Group5	29	89
Panel2		30	90
Panel5		710	311

## 1.2.3.1.4.5 Tags used by Component

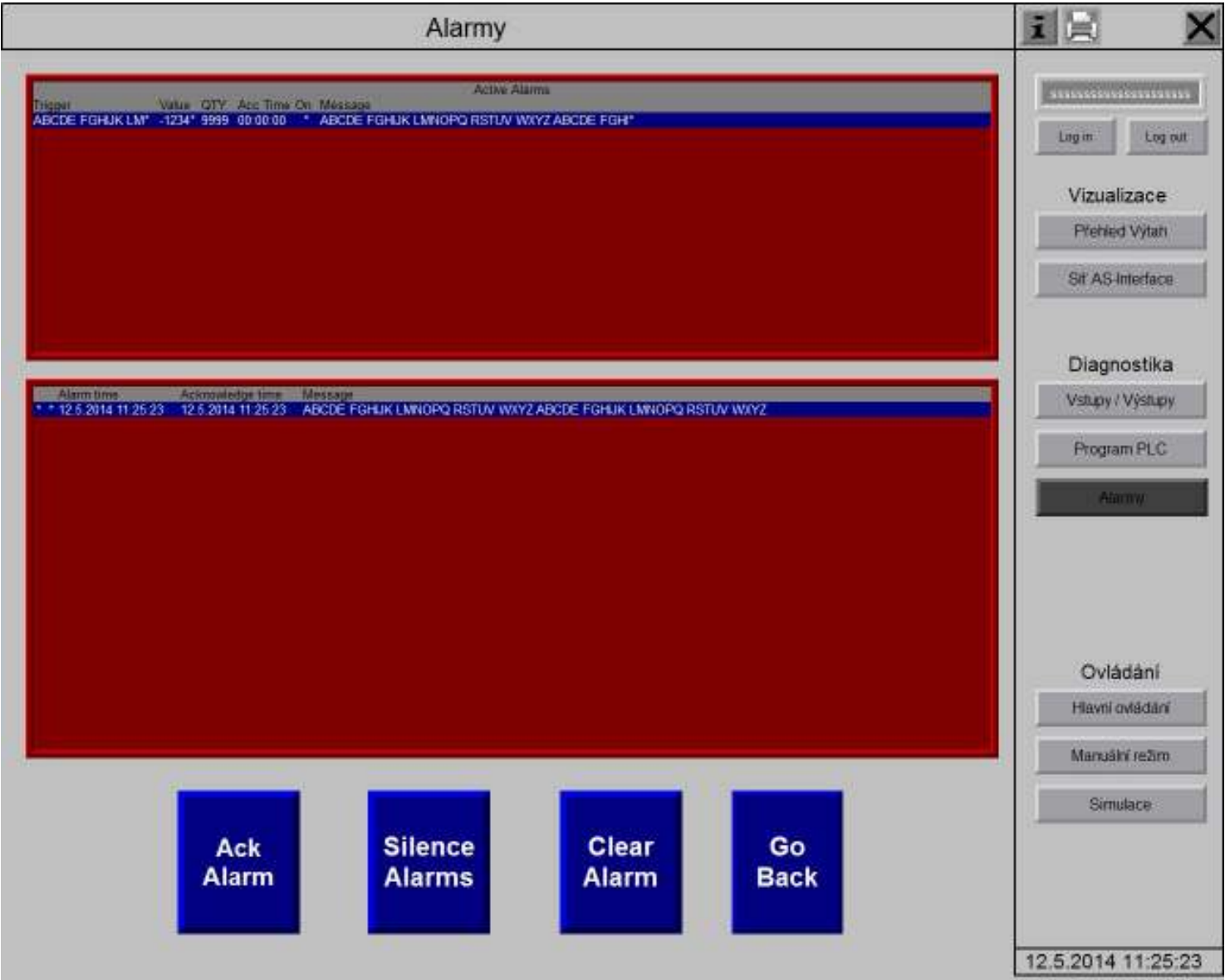
<u>Tag Name</u>	<u>Tag Type</u>	<u>Tag Description</u>
-----------------	-----------------	------------------------

```
::[PLC1]Program:MainProgram.INC_SNIMAC_ZATIZENI
```

<u>Tag Name</u>	<u>Tag Type</u>	<u>Tag Description</u>
::[PLC1]Program:MainProgram.INC_TL_STOP		
::[PLC1]Program:MainProgram.INC_TL_ZVONEK		
::[PLC1]Program:MainProgram.MOD0		
::[PLC1]Program:MainProgram.MOD1		
::[PLC1]Program:MainProgram.MOD2		
::[PLC1]Program:MainProgram.OUT_OVL_Mot		
::[PLC1]Program:MainProgram.OUT_OVL_Patro		
::[PLC1]Program:MainProgram.OUT_OVL_SMER_DOLU		
::[PLC1]Program:MainProgram.OUT_OVL_SMER_NAHORU		
::[PLC1]Program:MainProgram.VIZU_MOT_RYCHLOST		
::[PLC1]Program:MainProgram.VIZU_Pozice_Kabiny_proc2		
::[PLC1]Program:MainProgram.VIZU_PRETIZENI		
::[PLC1]Program:MainProgram.VIZU_TL_DOL1		
::[PLC1]Program:MainProgram.VIZU_TL_DOL2		
::[PLC1]Program:MainProgram.VIZU_TL_DOL3		
::[PLC1]Program:MainProgram.VIZU_TL_DOL4		
::[PLC1]Program:MainProgram.VIZU_TL_KAB1		
::[PLC1]Program:MainProgram.VIZU_TL_KAB2		
::[PLC1]Program:MainProgram.VIZU_TL_KAB3		
::[PLC1]Program:MainProgram.VIZU_TL_KAB4		
::[PLC1]Program:MainProgram.VIZU_TL_NAH1		
::[PLC1]Program:MainProgram.VIZU_TL_NAH2		
::[PLC1]Program:MainProgram.VIZU_TL_NAH3		
::[PLC1]Program:MainProgram.VIZU_TL_NAH4		
LOG0	Digital Tags	
TAG1	Digital Tags	Jen pro zapis hodnoty, nevyužívá se



1.2.3.1.5 Graphics\Displays\Z\_ALARMY



1.2.3.1.5.1 Graphics\Z\_ALARMY\Display Settings\General

Option	Selection
Display Type	Replace
Display Number	1
Security Code	P
Disable Initial Input Focus	NO
Maximum Tag Update Rate	1.00 seconds
Background Color	0xC0C0C0

1.2.3.1.5.2 Graphics\Z\_ALARMY\Display Settings\Behavior

Option	Selection
Startup Command	
Shutdown Command	
Disable Highlight When Object has Focus	NO
Highlight Color of Objects with Input Focus	0x00FF00

1.2.3.1.5.3 Animated Display Objects

Object Name	Grouping	X	Y	Property	Expression
StringDisplay1		1082	75	String Display: Connections: Value	CurrentUserName( )
ClearAlarmButton		585	825	ActiveX Control :Key Assignment	F3
SilenceAlarmsButton		384	825	ActiveX Control :Key Assignment	F2
AcknowledgeAlarmButton		185	825	ActiveX Control :Key Assignment	F1

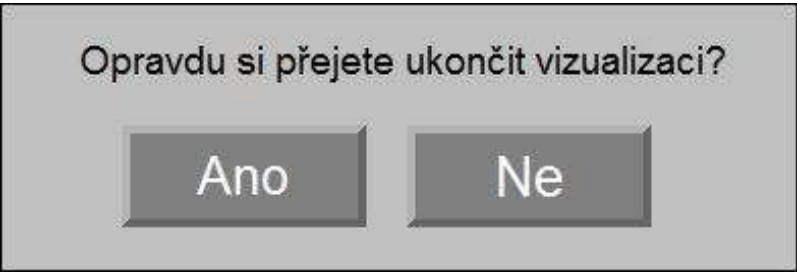
1.2.3.1.5.4 Object Properties

<u>Object Name</u>	<u>Grouping</u>	<u>X</u>	<u>Y</u>
AlarmStatusList3		26	75
AlarmList1		26	394
GotoDisplayButton11		1082	819
LogoutButton3		1177	120
LoginButton2		1082	120
GotoDisplayButton10		1082	768
GotoDisplayButton9		1082	718
Text4		1130	689
GotoDisplayButton8		1082	447
GotoDisplayButton6		1082	396
Text3		1117	367
GotoDisplayButton5		1083	498
GotoDisplayButton4		1082	269
GotoDisplayButton3		1082	219
Text2		1117	190
Polygon2		1060	0
GotoDisplayButton2		1066	5
DisplayPrintButton1		1111	5
GotoDisplayButton1		1236	5
TimeDateDisplay1		1060	989
Polygon1		1060	0
ReturntoDisplayButton1		765	825
Text1		445	10
Polygon3		0	0

1.2.3.1.5.5 Tags used by Component

<u>Tag Name</u>	<u>Tag Type</u>	<u>Tag Description</u>
-----------------	-----------------	------------------------

1.2.3.1.6 Graphics\Displays\Z\_CLOSE\_VIZU



1.2.3.1.6.1 Graphics|Z\_CLOSE\_VIZU|Display Settings|General

Option	Selection
Display Type	On Top
Security Code	*
Title Bar	NO
Disable Initial Input Focus	NO
Maximum Tag Update Rate	1.00 seconds
Size	Use Current Size
Position X	444
Position Y	446
Background Color	0xC0C0C0

1.2.3.1.6.2 Graphics|Z\_CLOSE\_VIZU|Display Settings|Behavior

Option	Selection
Startup Command	
Shutdown Command	
Disable Highlight When Object has Focus	NO
Highlight Color of Objects with Input Focus	0x00FF00

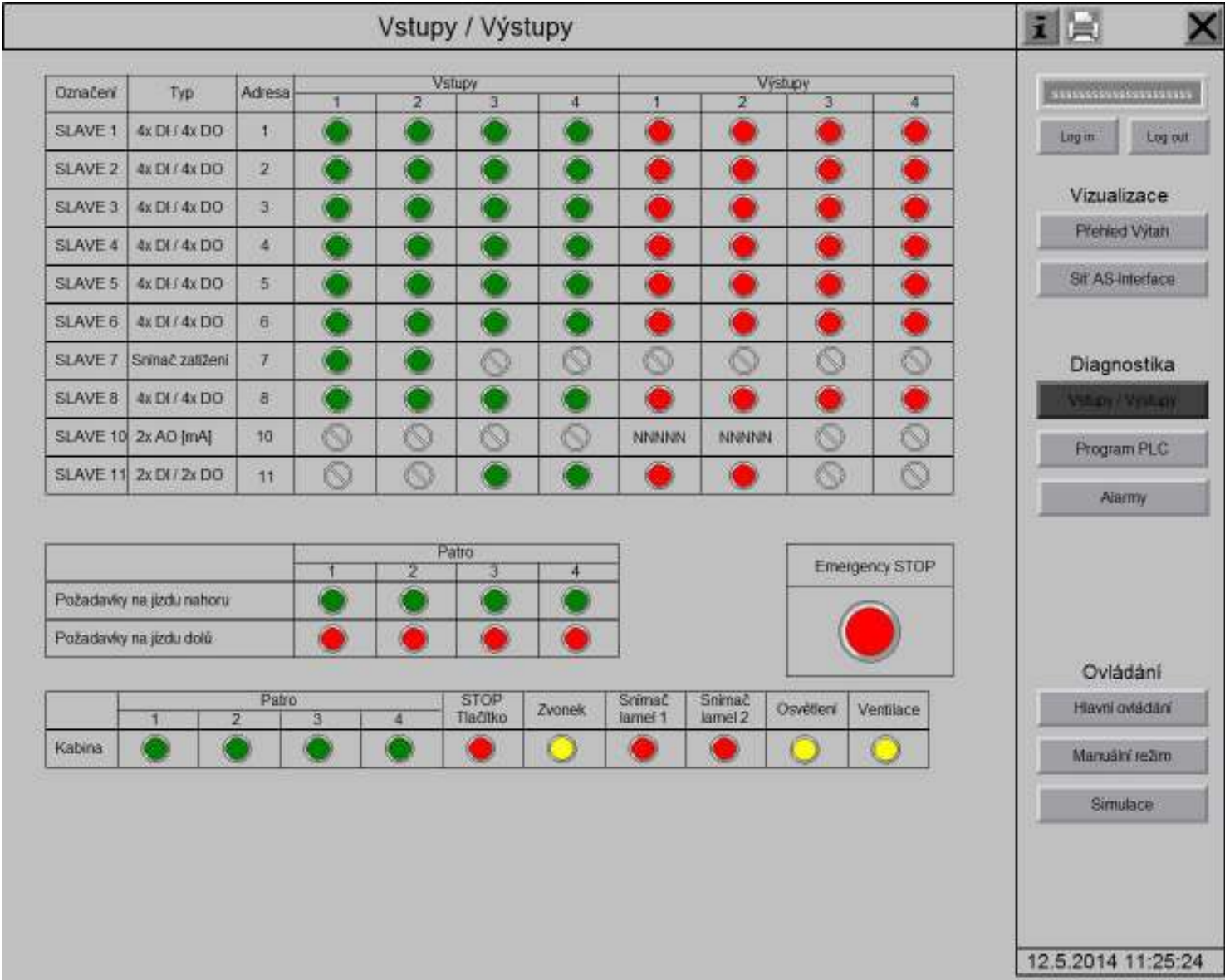
1.2.3.1.6.3 Object Properties

Object Name	Grouping	X	Y
CloseDisplayButton1		200	60
ShutdownButton1		60	60
Text1		39	17
Polygon1		0	0

1.2.3.1.6.4 Tags used by Component

Tag Name	Tag Type	Tag Description
----------	----------	-----------------

1.2.3.1.7 Graphics\Displays\Z\_DIA\_IO



1.2.3.1.7.1 Graphics\Z\_DIA\_IO\Display Settings\General

Option	Selection
Display Type	Replace
Display Number	1
Security Code	P
Disable Initial Input Focus	NO
Maximum Tag Update Rate	0.10 seconds
Background Color	0xC0C0C0

1.2.3.1.7.2 Graphics\Z\_DIA\_IO\Display Settings\Behavior

Option	Selection
Startup Command	
Shutdown Command	
Disable Highlight When Object has Focus	NO
Highlight Color of Objects with Input Focus	0x00FF00

1.2.3.1.7.3 Animated Display Objects

Object Name	Grouping	X	Y	Property	Expression
Group75	++Group75	909	767		
Polygon804		912	770	Polygon: Color Control	{: [PLC1]Program:MainProgram.OUT_VENTILATOR }
Group75	+Group75	909	767		
Group63	++Group63	824	767		
Polygon801		827	770	Polygon: Color Control	{: [PLC1]Program:MainProgram.OUT_OSVETLEN }
Group63	+Group63	824	767		

Object Name	Grouping	X	Y	Property	Expression
Group19	++Group19	909	767		
Polygon798		912	770	Polygon: Color Control	{:[PLC1]Program:MainProgram.INC_SNIMAC2}
Group19	+-Group19	909	767		
Group18	++Group18	824	767		
Polygon795		827	770	Polygon: Color Control	{:[PLC1]Program:MainProgram.INC_SNIMAC1}
Group18	+-Group18	824	767		
Group6	++Group6	586	480		
Polygon348		589	483	Polygon: Color Control	{[PLC1]ASi_Input.Data[2].3}
Group6	+-Group6	586	480		
Group3	++Group3	501	480		
Polygon45		504	483	Polygon: Color Control	{[PLC1]ASi_Input.Data[2].2}
Group3	+-Group3	501	480		
Group8	++Group8	760	480		
Polygon354		763	483	Polygon: Color Control	{[PLC1]ASi_Output.Data[2].1}
Group8	+-Group8	760	480		
Group7	++Group7	672	480		
Polygon351		675	483	Polygon: Color Control	{[PLC1]ASi_Output.Data[2].0}
Group7	+-Group7	672	480		
StringDisplay1		1082	75	String Display: Connections: Value	CurrentUserName( )
Group112	++Group112	875	626		
Polygon861		882	633	Polygon: Color Control	{:[PLC1]Program:MainProgram.VIZU_ESTOP}
Group112	+-Group112	875	626		
Group111	++Group111	740	766		
Polygon858		743	769	Polygon: Color Control	{:[PLC1]Program:MainProgram.INC_SNIMAC2}
Group111	+-Group111	740	766		
Group110	++Group110	655	766		
Polygon855		658	769	Polygon: Color Control	{:[PLC1]Program:MainProgram.INC_SNIMAC1}
Group110	+-Group110	655	766		
Group109	++Group109	570	766		
Polygon852		573	769	Polygon: Color Control	{:[PLC1]Program:MainProgram.INC_TL_ZVONEK}
Group109	+-Group109	570	766		
Group107	++Group107	485	766		
Polygon846		488	769	Polygon: Color Control	{:[PLC1]Program:MainProgram.INC_TL_STOP}
Group107	+-Group107	485	766		
Group105	++Group105	400	766		
Polygon840		403	769	Polygon: Color Control	{:[PLC1]Program:MainProgram.VIZU_TL_KAB4}
Group105	+-Group105	400	766		
Group104	++Group104	315	766		
Polygon837		318	769	Polygon: Color Control	{:[PLC1]Program:MainProgram.VIZU_TL_KAB3}
Group104	+-Group104	315	766		
Group103	++Group103	230	766		
Polygon834		233	769	Polygon: Color Control	{:[PLC1]Program:MainProgram.VIZU_TL_KAB2}
Group103	+-Group103	230	766		
Group102	++Group102	145	766		
Polygon831		148	769	Polygon: Color Control	{:[PLC1]Program:MainProgram.VIZU_TL_KAB1}
Group102	+-Group102	145	766		
NumericDisplay3		745	440	Numeric Display: Connections: Value	{[PLC1]ASi_Output.Data[69]}
NumericDisplay2		655	440	Numeric Display: Connections: Value	{[PLC1]ASi_Output.Data[68]}
Group100	++Group100	585	651		
Polygon823		588	654	Polygon: Color Control	{:[PLC1]Program:MainProgram.VIZU_TL_DOL4}
Group100	+-Group100	585	651		
Group99	++Group99	500	651		
Polygon820		503	654	Polygon: Color Control	{:[PLC1]Program:MainProgram.VIZU_TL_DOL3}
Group99	+-Group99	500	651		
Group98	++Group98	415	651		
Polygon817		418	654	Polygon: Color Control	{:[PLC1]Program:MainProgram.VIZU_TL_DOL2}
Group98	+-Group98	415	651		
Group97	++Group97	330	651		
Polygon814		333	654	Polygon: Color Control	{:[PLC1]Program:MainProgram.VIZU_TL_DOL1}
Group97	+-Group97	330	651		
Group90	++Group90	585	611		
Polygon793		588	614	Polygon: Color Control	{:[PLC1]Program:MainProgram.VIZU_TL_NAH4}
Group90	+-Group90	585	611		
Group89	++Group89	500	611		
Polygon790		503	614	Polygon: Color Control	{:[PLC1]Program:MainProgram.VIZU_TL_NAH3}
Group89	+-Group89	500	611		
Group88	++Group88	415	611		
Polygon787		418	614	Polygon: Color Control	{:[PLC1]Program:MainProgram.VIZU_TL_NAH2}
Group88	+-Group88	415	611		
Group87	++Group87	330	611		
Polygon784		333	614	Polygon: Color Control	{:[PLC1]Program:MainProgram.VIZU_TL_NAH1}
Group87	+-Group87	330	611		
Group71	++Group71	940	400		
Polygon225		943	403	Polygon: Color Control	{[PLC1]ASi_Output.Data[2].15}
Group71	+-Group71	940	400		
Group70	++Group70	850	400		
Polygon222		853	403	Polygon: Color Control	{[PLC1]ASi_Output.Data[2].14}
Group70	+-Group70	850	400		
Group69	++Group69	760	400		
Polygon219		763	403	Polygon: Color Control	{[PLC1]ASi_Output.Data[2].13}
Group69	+-Group69	760	400		
Group68	++Group68	672	400		
Polygon216		675	403	Polygon: Color Control	{[PLC1]ASi_Output.Data[2].12}
Group68	+-Group68	672	400		
Group67	++Group67	585	400		
Polygon213		588	403	Polygon: Color Control	{[PLC1]ASi_Input.Data[2].15}
Group67	+-Group67	585	400		
Group66	++Group66	500	400		
Polygon210		503	403	Polygon: Color Control	{[PLC1]ASi_Input.Data[2].14}
Group66	+-Group66	500	400		
Group65	++Group65	420	400		
Polygon207		423	403	Polygon: Color Control	{[PLC1]ASi_Input.Data[2].13}
Group65	+-Group65	420	400		
Group64	++Group64	335	400		
Polygon204		338	403	Polygon: Color Control	{[PLC1]ASi_Input.Data[2].12}
Group64	+-Group64	335	400		
Group62	++Group62	420	360		
Polygon198		423	363	Polygon: Color Control	{[PLC1]ASi_Input.Data[1].1}

<u>Object Name</u>	<u>Grouping</u>	<u>X</u>	<u>Y</u>	<u>Property</u>	<u>Expression</u>
Group62	+Group62	420	360		
Group61	++Group61	335	360		
Polygon195		338	363	Polygon: Color Control	{{PLC1}ASi_Input.Data[1].0}
Group61	+Group61	335	360		
Group60	++Group60	940	320		
Polygon192		943	323	Polygon: Color Control	{{PLC1}ASi_Output.Data[1].7}
Group60	+Group60	940	320		
Group59	++Group59	850	320		
Polygon189		853	323	Polygon: Color Control	{{PLC1}ASi_Output.Data[1].6}
Group59	+Group59	850	320		
Group58	++Group58	760	320		
Polygon186		763	323	Polygon: Color Control	{{PLC1}ASi_Output.Data[1].5}
Group58	+Group58	760	320		
Group57	++Group57	672	320		
Polygon183		675	323	Polygon: Color Control	{{PLC1}ASi_Output.Data[1].4}
Group57	+Group57	672	320		
Group56	++Group56	587	320		
Polygon180		590	323	Polygon: Color Control	{{PLC1}ASi_Input.Data[1].7}
Group56	+Group56	587	320		
Group55	++Group55	500	320		
Polygon177		503	323	Polygon: Color Control	{{PLC1}ASi_Input.Data[1].6}
Group55	+Group55	500	320		
Group54	++Group54	420	320		
Polygon174		423	323	Polygon: Color Control	{{PLC1}ASi_Input.Data[1].5}
Group54	+Group54	420	320		
Group53	++Group53	335	320		
Polygon171		338	323	Polygon: Color Control	{{PLC1}ASi_Input.Data[1].4}
Group53	+Group53	335	320		
Group52	++Group52	940	280		
Polygon168		943	283	Polygon: Color Control	{{PLC1}ASi_Output.Data[1].11}
Group52	+Group52	940	280		
Group51	++Group51	850	280		
Polygon165		853	283	Polygon: Color Control	{{PLC1}ASi_Output.Data[1].10}
Group51	+Group51	850	280		
Group50	++Group50	760	280		
Polygon162		763	283	Polygon: Color Control	{{PLC1}ASi_Output.Data[1].9}
Group50	+Group50	760	280		
Group49	++Group49	672	280		
Polygon159		675	283	Polygon: Color Control	{{PLC1}ASi_Output.Data[1].8}
Group49	+Group49	672	280		
Group48	++Group48	587	280		
Polygon156		590	283	Polygon: Color Control	{{PLC1}ASi_Input.Data[1].11}
Group48	+Group48	587	280		
Group47	++Group47	500	280		
Polygon153		503	283	Polygon: Color Control	{{PLC1}ASi_Input.Data[1].10}
Group47	+Group47	500	280		
Group46	++Group46	420	280		
Polygon150		423	283	Polygon: Color Control	{{PLC1}ASi_Input.Data[1].9}
Group46	+Group46	420	280		
Group45	++Group45	335	280		
Polygon147		338	283	Polygon: Color Control	{{PLC1}ASi_Input.Data[1].8}
Group45	+Group45	335	280		
Group44	++Group44	940	240		
Polygon144		943	243	Polygon: Color Control	{{PLC1}ASi_Output.Data[1].15}
Group44	+Group44	940	240		
Group43	++Group43	850	240		
Polygon141		853	243	Polygon: Color Control	{{PLC1}ASi_Output.Data[1].14}
Group43	+Group43	850	240		
Group42	++Group42	760	240		
Polygon138		763	243	Polygon: Color Control	{{PLC1}ASi_Output.Data[1].13}
Group42	+Group42	760	240		
Group41	++Group41	672	240		
Polygon135		675	243	Polygon: Color Control	{{PLC1}ASi_Output.Data[1].12}
Group41	+Group41	672	240		
Group40	++Group40	587	240		
Polygon132		590	243	Polygon: Color Control	{{PLC1}ASi_Input.Data[1].15}
Group40	+Group40	587	240		
Group39	++Group39	500	240		
Polygon129		503	243	Polygon: Color Control	{{PLC1}ASi_Input.Data[1].14}
Group39	+Group39	500	240		
Group38	++Group38	420	240		
Polygon126		423	243	Polygon: Color Control	{{PLC1}ASi_Input.Data[1].13}
Group38	+Group38	420	240		
Group37	++Group37	335	240		
Polygon123		338	243	Polygon: Color Control	{{PLC1}ASi_Input.Data[1].12}
Group37	+Group37	335	240		
Group36	++Group36	940	200		
Polygon120		943	203	Polygon: Color Control	{{PLC1}ASi_Output.Data[0].3}
Group36	+Group36	940	200		
Group35	++Group35	850	200		
Polygon117		853	203	Polygon: Color Control	{{PLC1}ASi_Output.Data[0].2}
Group35	+Group35	850	200		
Group34	++Group34	760	200		
Polygon114		763	203	Polygon: Color Control	{{PLC1}ASi_Output.Data[0].1}
Group34	+Group34	760	200		
Group33	++Group33	672	200		
Polygon111		675	203	Polygon: Color Control	{{PLC1}ASi_Output.Data[0].0}
Group33	+Group33	672	200		
Group32	++Group32	587	200		
Polygon108		590	203	Polygon: Color Control	{{PLC1}ASi_Input.Data[0].3}
Group32	+Group32	587	200		
Group31	++Group31	500	200		
Polygon105		503	203	Polygon: Color Control	{{PLC1}ASi_Input.Data[0].2}
Group31	+Group31	500	200		
Group30	++Group30	420	200		
Polygon102		423	203	Polygon: Color Control	{{PLC1}ASi_Input.Data[0].1}
Group30	+Group30	420	200		
Group29	++Group29	335	200		

Object Name	Grouping	X	Y	Property	Expression
Polygon96		338	203	Polygon: Color Control	{[PLC1]ASi_Input.Data[0].0}
Group29	+--Group29	335	200		
Group28	++Group28	940	160		
Polygon93		943	163	Polygon: Color Control	{[PLC1]ASi_Output.Data[0].7}
Group28	+--Group28	940	160		
Group27	++Group27	850	160		
Polygon90		853	163	Polygon: Color Control	{[PLC1]ASi_Output.Data[0].6}
Group27	+--Group27	850	160		
Group26	++Group26	760	160		
Polygon87		763	163	Polygon: Color Control	{[PLC1]ASi_Output.Data[0].5}
Group26	+--Group26	760	160		
Group25	++Group25	672	160		
Polygon84		675	163	Polygon: Color Control	{[PLC1]ASi_Output.Data[0].4}
Group25	+--Group25	672	160		
Group24	++Group24	587	160		
Polygon81		590	163	Polygon: Color Control	{[PLC1]ASi_Input.Data[0].7}
Group24	+--Group24	587	160		
Group23	++Group23	500	160		
Polygon78		503	163	Polygon: Color Control	{[PLC1]ASi_Input.Data[0].6}
Group23	+--Group23	500	160		
Group22	++Group22	420	160		
Polygon75		423	163	Polygon: Color Control	{[PLC1]ASi_Input.Data[0].5}
Group22	+--Group22	420	160		
Group21	++Group21	335	160		
Polygon72		338	163	Polygon: Color Control	{[PLC1]ASi_Input.Data[0].4}
Group21	+--Group21	335	160		
Group14	++Group14	587	120		
Polygon55		590	123	Polygon: Color Control	{[PLC1]ASi_Input.Data[0].11}
Group14	+--Group14	587	120		
Group13	++Group13	500	120		
Polygon52		503	123	Polygon: Color Control	{[PLC1]ASi_Input.Data[0].10}
Group13	+--Group13	500	120		
Group12	++Group12	420	120		
Polygon49		423	123	Polygon: Color Control	{[PLC1]ASi_Input.Data[0].9}
Group12	+--Group12	420	120		
Group11	++Group11	940	120		
Polygon43		943	123	Polygon: Color Control	{[PLC1]ASi_Output.Data[0].11}
Group11	+--Group11	940	120		
Group10	++Group10	850	120		
Polygon40		853	123	Polygon: Color Control	{[PLC1]ASi_Output.Data[0].10}
Group10	+--Group10	850	120		
Group9	++Group9	760	120		
Polygon37		763	123	Polygon: Color Control	{[PLC1]ASi_Output.Data[0].9}
Group9	+--Group9	760	120		
Group4	++Group4	672	120		
Polygon25		675	123	Polygon: Color Control	{[PLC1]ASi_Output.Data[0].8}
Group4	+--Group4	672	120		
Group20	++Group20	335	120		
Polygon99		338	123	Polygon: Color Control	{[PLC1]ASi_Input.Data[0].8}
Group20	+--Group20	335	120		

1.2.3.1.7.4 Object Properties

Object Name	Grouping	X	Y
Group75	++Group75	909	767
Group75		909	767
Polygon803		911	768
Polygon802		909	767
Group75	+--Group75	909	767
Group63	++Group63	824	767
Group63		824	767
Polygon800		826	768
Polygon799		824	767
Group63	+--Group63	824	767
Text67		895	722
Text66		810	721
Line30		884	722
Line29		799	722
Line28		799	722
Group19	++Group19	909	767
Group19		909	767
Polygon797		911	768
Polygon796		909	767
Group19	+--Group19	909	767
Group18	++Group18	824	767
Group18		824	767
Polygon794		826	768
Polygon526		824	767
Group18	+--Group18	824	767
Group17	++Group17	501	362
Group17		501	362
Polyline27		503	369
Polyline26		508	364
Polyline25		501	362
Polygon525		508	389
Polygon524		506	387
Polygon523		504	386
Polygon522		521	386
Polygon521		503	384
Polygon520		521	384
Polygon519		502	382
Polygon518		519	382
Polygon517		525	382
Polygon516		501	380
Polygon515		517	380

<u>Object Name</u>	<u>Grouping</u>	<u>X</u>	<u>Y</u>
Polygon514		526	380
Polygon513		501	378
Polygon512		516	378
Polygon511		527	378
Polygon510		501	377
Polygon509		514	377
Polygon508		527	377
Polygon507		501	375
Polygon506		512	375
Polygon505		527	375
Polygon504		501	373
Polygon503		510	373
Polygon502		527	373
Polygon501		501	371
Polygon500		508	371
Polygon499		526	371
Polygon498		502	369
Polygon497		506	369
Polygon496		525	369
Polygon495		503	367
Polygon494		523	367
Polygon493		504	366
Polygon201		521	366
Polygon200		506	364
Polygon199		508	362
Group17	+ -Group17	501	362
Group16	++Group16	940	480
Group16		940	480
Polyline24		942	487
Polyline23		947	482
Polyline22		940	480
Polygon492		947	507
Polygon491		945	505
Polygon490		943	504
Polygon489		960	504
Polygon488		942	502
Polygon487		960	502
Polygon486		941	500
Polygon485		958	500
Polygon484		964	500
Polygon483		940	498
Polygon482		956	498
Polygon481		965	498
Polygon480		940	496
Polygon479		955	496
Polygon478		966	496
Polygon477		940	495
Polygon476		953	495
Polygon475		966	495
Polygon474		940	493
Polygon473		951	493
Polygon472		966	493
Polygon471		940	491
Polygon470		949	491
Polygon469		966	491
Polygon468		940	489
Polygon467		947	489
Polygon466		965	489
Polygon465		941	487
Polygon464		945	487
Polygon463		964	487
Polygon462		942	485
Polygon461		962	485
Polygon460		943	484
Polygon459		960	484
Polygon458		945	482
Polygon457		947	480
Group16	+ -Group16	940	480
Group15	++Group15	851	480
Group15		851	480
Polyline21		853	487
Polyline20		858	482
Polyline19		851	480
Polygon456		858	507
Polygon455		856	505
Polygon454		854	504
Polygon453		871	504
Polygon452		853	502
Polygon451		871	502
Polygon450		852	500
Polygon449		869	500
Polygon448		875	500
Polygon447		851	498
Polygon446		867	498
Polygon445		876	498
Polygon444		851	496
Polygon443		866	496
Polygon442		877	496
Polygon441		851	495
Polygon440		864	495
Polygon439		877	495
Polygon438		851	493
Polygon437		862	493
Polygon436		877	493
Polygon435		851	491
Polygon434		860	491
Polygon433		877	491
Polygon432		851	489



<u>Object Name</u>	<u>Grouping</u>	<u>X</u>	<u>Y</u>
Polygon431		858	489
Polygon430		876	489
Polygon429		852	487
Polygon428		856	487
Polygon427		875	487
Polygon426		853	485
Polygon425		873	485
Polygon424		854	484
Polygon423		871	484
Polygon422		856	482
Polygon421		858	480
Group15	+~Group15	851	480
Group2	++Group2	421	480
Group2		421	480
Polyline18		423	487
Polyline17		428	482
Polyline16		421	480
Polygon420		428	507
Polygon419		426	505
Polygon418		424	504
Polygon417		441	504
Polygon416		423	502
Polygon415		441	502
Polygon414		422	500
Polygon413		439	500
Polygon412		445	500
Polygon411		421	498
Polygon410		437	498
Polygon409		446	498
Polygon408		421	496
Polygon407		436	496
Polygon406		447	496
Polygon405		421	495
Polygon404		434	495
Polygon403		447	495
Polygon402		421	493
Polygon401		432	493
Polygon400		447	493
Polygon399		421	491
Polygon398		430	491
Polygon397		447	491
Polygon396		421	489
Polygon395		428	489
Polygon394		446	489
Polygon393		422	487
Polygon392		426	487
Polygon391		445	487
Polygon390		423	485
Polygon389		443	485
Polygon388		424	484
Polygon387		441	484
Polygon386		426	482
Polygon385		428	480
Group2	+~Group2	421	480
Group1	++Group1	336	480
Group1		336	480
Polyline15		338	487
Polyline14		343	482
Polyline13		336	480
Polygon384		343	507
Polygon383		341	505
Polygon382		339	504
Polygon381		356	504
Polygon380		338	502
Polygon379		356	502
Polygon378		337	500
Polygon377		354	500
Polygon376		360	500
Polygon375		336	498
Polygon374		352	498
Polygon373		361	498
Polygon372		336	496
Polygon371		351	496
Polygon370		362	496
Polygon369		336	495
Polygon368		349	495
Polygon367		362	495
Polygon366		336	493
Polygon365		347	493
Polygon364		362	493
Polygon363		336	491
Polygon362		345	491
Polygon361		362	491
Polygon360		336	489
Polygon359		343	489
Polygon358		361	489
Polygon357		337	487
Polygon356		341	487
Polygon355		360	487
Polygon21		338	485
Polygon20		358	485
Polygon19		339	484
Polygon18		356	484
Polygon17		341	482
Polygon16		343	480
Group1	+~Group1	336	480
Group6	++Group6	586	480
Group6		586	480

<u>Object Name</u>	<u>Grouping</u>	<u>X</u>	<u>Y</u>
Polygon347		588	481
Polygon46		586	480
Group6	+ -Group6	586	480
Group3	++Group3	501	480
Group3		501	480
Polygon44		503	481
Polygon22		501	480
Group3	+ -Group3	501	480
Group8	++Group8	760	480
Group8		760	480
Polygon353		762	481
Polygon352		760	480
Group8	+ -Group8	760	480
Group7	++Group7	672	480
Group7		672	480
Polygon350		674	481
Polygon349		672	480
Group7	+ -Group7	672	480
Text65		267	487
Text64		140	485
Text52		55	485
Polygon15		45	475
GotoDisplayButton11		1082	819
LogoutButton3		1177	120
LoginButton2		1082	120
GotoDisplayButton10		1082	768
GotoDisplayButton9		1082	718
Text4		1130	689
GotoDisplayButton8		1082	447
GotoDisplayButton6		1082	396
Text3		1117	367
GotoDisplayButton5		1083	498
GotoDisplayButton4		1082	269
GotoDisplayButton3		1082	219
Text2		1117	190
Polygon2		1060	0
GotoDisplayButton2		1066	5
DisplayPrintButton1		1111	5
GotoDisplayButton1		1236	5
TimeDateDisplay1		1060	989
Polygon1		1060	0
Line23		820	611
Group112	++Group112	875	626
Group112		875	626
Polygon860		878	629
Polygon859		875	626
Group112	+ -Group112	875	626
Text63		850	581
Polygon14		820	566
Text62		730	721
Text61		645	721
Text60		560	731
Text59		475	721
Line27		715	721
Line26		630	721
Line25		630	721
Line24		545	721
Group111	++Group111	740	766
Group111		740	766
Polygon857		742	767
Polygon856		740	766
Group111	+ -Group111	740	766
Group110	++Group110	655	766
Group110		655	766
Polygon854		657	767
Polygon853		655	766
Group110	+ -Group110	655	766
Group109	++Group109	570	766
Group109		570	766
Polygon851		572	767
Polygon850		570	766
Group109	+ -Group109	570	766
Group107	++Group107	485	766
Group107		485	766
Polygon845		487	767
Polygon844		485	766
Group107	+ -Group107	485	766
Line22		460	722
Line21		375	742
Line20		290	742
Line19		205	741
Line18		120	721
Text58		410	741
Text57		325	741
Text56		240	741
Text55		155	741
Text54		270	721
Line16		120	741
Group105	++Group105	400	766
Group105		400	766
Polygon839		402	767
Polygon838		400	766
Group105	+ -Group105	400	766
Group104	++Group104	315	766
Group104		315	766
Polygon836		317	767
Polygon835		315	766
Group104	+ -Group104	315	766

<u>Object Name</u>	<u>Grouping</u>	<u>X</u>	<u>Y</u>
Group103	++Group103	230	766
Group103		230	766
Polygon833		232	767
Polygon832		230	766
Group103	+Group103	230	766
Group102	++Group102	145	766
Group102		145	766
Polygon830		147	767
Polygon829		145	766
Group102	+Group102	145	766
Text53		55	771
Polygon828		45	761
Polygon827		45	721
Text51		595	586
Text50		510	586
Text49		425	586
Text48		340	586
Text47		455	566
Line17		305	586
Group100	++Group100	585	651
Group100		585	651
Polygon822		587	652
Polygon821		585	651
Group100	+Group100	585	651
Group99	++Group99	500	651
Group99		500	651
Polygon819		502	652
Polygon818		500	651
Group99	+Group99	500	651
Group98	++Group98	415	651
Group98		415	651
Polygon816		417	652
Polygon815		415	651
Group98	+Group98	415	651
Group97	++Group97	330	651
Group97		330	651
Polygon813		332	652
Polygon812		330	651
Group97	+Group97	330	651
Line15		560	586
Line14		475	586
Group90	++Group90	585	611
Group90		585	611
Polygon792		587	612
Polygon791		585	611
Group90	+Group90	585	611
Group89	++Group89	500	611
Group89		500	611
Polygon789		502	612
Polygon788		500	611
Group89	+Group89	500	611
Group88	++Group88	415	611
Group88		415	611
Polygon786		417	612
Polygon785		415	611
Group88	+Group88	415	611
Group87	++Group87	330	611
Group87		330	611
Polygon783		332	612
Polygon782		330	611
Group87	+Group87	330	611
Line13		390	586
Line12		305	566
Polygon781		45	646
Text46		55	656
Text45		55	616
Polygon780		45	606
Polygon779		45	566
Group86	++Group86	941	360
Group86		941	360
Polyline48		943	367
Polyline47		948	362
Polyline46		941	360
Polygon778		948	387
Polygon777		946	385
Polygon776		944	384
Polygon775		961	384
Polygon774		943	382
Polygon773		961	382
Polygon772		942	380
Polygon771		959	380
Polygon770		965	380
Polygon769		941	378
Polygon768		957	378
Polygon767		966	378
Polygon766		941	376
Polygon765		956	376
Polygon764		967	376
Polygon763		941	375
Polygon762		954	375
Polygon761		967	375
Polygon760		941	373
Polygon759		952	373
Polygon758		967	373
Polygon757		941	371
Polygon756		950	371
Polygon755		967	371
Polygon754		941	369

Object Name	Grouping	X	Y
Polygon753		948	369
Polygon752		966	369
Polygon751		942	367
Polygon750		946	367
Polygon749		965	367
Polygon748		943	365
Polygon747		963	365
Polygon746		944	364
Polygon745		961	364
Polygon744		946	362
Polygon743		948	360
Group86	+~Group86	941	360
Group85	++Group85	852	360
Group85		852	360
Polyline45		854	367
Polyline44		859	362
Polyline43		852	360
Polygon742		859	387
Polygon741		857	385
Polygon740		855	384
Polygon739		872	384
Polygon738		854	382
Polygon737		872	382
Polygon736		853	380
Polygon735		870	380
Polygon734		876	380
Polygon733		852	378
Polygon732		868	378
Polygon731		877	378
Polygon730		852	376
Polygon729		867	376
Polygon728		878	376
Polygon727		852	375
Polygon726		865	375
Polygon725		878	375
Polygon724		852	373
Polygon723		863	373
Polygon722		878	373
Polygon721		852	371
Polygon720		861	371
Polygon719		878	371
Polygon718		852	369
Polygon717		859	369
Polygon716		877	369
Polygon715		853	367
Polygon714		857	367
Polygon713		876	367
Polygon712		854	365
Polygon711		874	365
Polygon710		855	364
Polygon709		872	364
Polygon708		857	362
Polygon707		859	360
Group85	+~Group85	852	360
Group84	++Group84	761	360
Group84		761	360
Polyline42		763	367
Polyline41		768	362
Polyline40		761	360
Polygon706		768	387
Polygon705		766	385
Polygon704		764	384
Polygon703		781	384
Polygon702		763	382
Polygon701		781	382
Polygon700		762	380
Polygon699		779	380
Polygon698		785	380
Polygon697		761	378
Polygon696		777	378
Polygon695		786	378
Polygon694		761	376
Polygon693		776	376
Polygon692		787	376
Polygon691		761	375
Polygon690		774	375
Polygon689		787	375
Polygon688		761	373
Polygon687		772	373
Polygon686		787	373
Polygon685		761	371
Polygon684		770	371
Polygon683		787	371
Polygon682		761	369
Polygon681		768	369
Polygon680		786	369
Polygon679		762	367
Polygon678		766	367
Polygon677		785	367
Polygon676		763	365
Polygon675		783	365
Polygon674		764	364
Polygon673		781	364
Polygon672		766	362
Polygon671		768	360
Group84	+~Group84	761	360
Group83	++Group83	671	360
Group83		671	360

<u>Object Name</u>	<u>Grouping</u>	<u>X</u>	<u>Y</u>
Polyline39		673	367
Polyline38		678	362
Polyline37		671	360
Polygon670		678	387
Polygon669		676	385
Polygon668		674	384
Polygon667		691	384
Polygon666		673	382
Polygon665		691	382
Polygon664		672	380
Polygon663		689	380
Polygon662		695	380
Polygon661		671	378
Polygon660		687	378
Polygon659		696	378
Polygon658		671	376
Polygon657		686	376
Polygon656		697	376
Polygon655		671	375
Polygon654		684	375
Polygon653		697	375
Polygon652		671	373
Polygon651		682	373
Polygon650		697	373
Polygon649		671	371
Polygon648		680	371
Polygon647		697	371
Polygon646		671	369
Polygon645		678	369
Polygon644		696	369
Polygon643		672	367
Polygon642		676	367
Polygon641		695	367
Polygon640		673	365
Polygon639		693	365
Polygon638		674	364
Polygon637		691	364
Polygon636		676	362
Polygon635		678	360
Group83	+~Group83	671	360
Group82	++Group82	586	360
Group82		586	360
Polyline36		588	367
Polyline35		593	362
Polyline34		586	360
Polygon634		593	387
Polygon633		591	385
Polygon632		589	384
Polygon631		606	384
Polygon630		588	382
Polygon629		606	382
Polygon628		587	380
Polygon627		604	380
Polygon626		610	380
Polygon625		586	378
Polygon624		602	378
Polygon623		611	378
Polygon622		586	376
Polygon621		601	376
Polygon620		612	376
Polygon619		586	375
Polygon618		599	375
Polygon617		612	375
Polygon616		586	373
Polygon615		597	373
Polygon614		612	373
Polygon613		586	371
Polygon612		595	371
Polygon611		612	371
Polygon610		586	369
Polygon609		593	369
Polygon608		611	369
Polygon607		587	367
Polygon606		591	367
Polygon605		610	367
Polygon604		588	365
Polygon603		608	365
Polygon602		589	364
Polygon601		606	364
Polygon600		591	362
Polygon599		593	360
Group82	+~Group82	586	360
Group81	++Group81	940	440
Group81		940	440
Polyline33		942	447
Polyline32		947	442
Polyline31		940	440
Polygon598		947	467
Polygon597		945	465
Polygon596		943	464
Polygon595		960	464
Polygon594		942	462
Polygon593		960	462
Polygon592		941	460
Polygon591		958	460
Polygon590		964	460
Polygon589		940	458
Polygon588		956	458

<u>Object Name</u>	<u>Grouping</u>	<u>X</u>	<u>Y</u>
Polygon587		965	458
Polygon586		940	456
Polygon585		955	456
Polygon584		966	456
Polygon583		940	455
Polygon582		953	455
Polygon581		966	455
Polygon580		940	453
Polygon579		951	453
Polygon578		966	453
Polygon577		940	451
Polygon576		949	451
Polygon575		966	451
Polygon574		940	449
Polygon573		947	449
Polygon572		965	449
Polygon571		941	447
Polygon570		945	447
Polygon569		964	447
Polygon568		942	445
Polygon567		962	445
Polygon566		943	444
Polygon565		960	444
Polygon564		945	442
Polygon563		947	440
Group81	+-Group81	940	440
Group80	++Group80	851	440
Group80		851	440
Polyline30		853	447
Polyline29		858	442
Polyline28		851	440
Polygon562		858	467
Polygon561		856	465
Polygon560		854	464
Polygon559		871	464
Polygon558		853	462
Polygon557		871	462
Polygon556		852	460
Polygon555		869	460
Polygon554		875	460
Polygon553		851	458
Polygon552		867	458
Polygon551		876	458
Polygon550		851	456
Polygon549		866	456
Polygon548		877	456
Polygon547		851	455
Polygon546		864	455
Polygon545		877	455
Polygon544		851	453
Polygon543		862	453
Polygon542		877	453
Polygon541		851	451
Polygon540		860	451
Polygon539		877	451
Polygon538		851	449
Polygon537		858	449
Polygon536		876	449
Polygon535		852	447
Polygon534		856	447
Polygon533		875	447
Polygon532		853	445
Polygon531		873	445
Polygon530		854	444
Polygon529		871	444
Polygon528		856	442
Polygon527		858	440
Group80	+-Group80	851	440
Group74	++Group74	585	440
Group74		585	440
Polyline12		587	447
Polyline11		592	442
Polyline10		585	440
Polygon346		592	467
Polygon345		590	465
Polygon344		588	464
Polygon343		605	464
Polygon342		587	462
Polygon341		605	462
Polygon340		586	460
Polygon339		603	460
Polygon338		609	460
Polygon337		585	458
Polygon336		601	458
Polygon335		610	458
Polygon334		585	456
Polygon333		600	456
Polygon332		611	456
Polygon331		585	455
Polygon330		598	455
Polygon329		611	455
Polygon328		585	453
Polygon327		596	453
Polygon326		611	453
Polygon325		585	451
Polygon324		594	451
Polygon323		611	451
Polygon322		585	449

<u>Object Name</u>	<u>Grouping</u>	<u>X</u>	<u>Y</u>
Polygon321		592	449
Polygon320		610	449
Polygon319		586	447
Polygon318		590	447
Polygon317		609	447
Polygon316		587	445
Polygon315		607	445
Polygon314		588	444
Polygon313		605	444
Polygon312		590	442
Polygon311		592	440
Group74	+~Group74	585	440
Group73	++Group73	500	440
Group73		500	440
Polyline9		502	447
Polyline8		507	442
Polyline7		500	440
Polygon310		507	467
Polygon309		505	465
Polygon308		503	464
Polygon307		520	464
Polygon306		502	462
Polygon305		520	462
Polygon304		501	460
Polygon303		518	460
Polygon302		524	460
Polygon301		500	458
Polygon300		516	458
Polygon299		525	458
Polygon298		500	456
Polygon297		515	456
Polygon296		526	456
Polygon295		500	455
Polygon294		513	455
Polygon293		526	455
Polygon292		500	453
Polygon291		511	453
Polygon290		526	453
Polygon289		500	451
Polygon288		509	451
Polygon287		526	451
Polygon286		500	449
Polygon285		507	449
Polygon284		525	449
Polygon283		501	447
Polygon282		505	447
Polygon281		524	447
Polygon280		502	445
Polygon279		522	445
Polygon278		503	444
Polygon277		520	444
Polygon276		505	442
Polygon275		507	440
Group73	+~Group73	500	440
Group72	++Group72	420	440
Group72		420	440
Polyline6		422	447
Polyline5		427	442
Polyline4		420	440
Polygon274		427	467
Polygon273		425	465
Polygon272		423	464
Polygon271		440	464
Polygon270		422	462
Polygon269		440	462
Polygon268		421	460
Polygon267		438	460
Polygon266		444	460
Polygon265		420	458
Polygon264		436	458
Polygon263		445	458
Polygon262		420	456
Polygon261		435	456
Polygon260		446	456
Polygon259		420	455
Polygon258		433	455
Polygon257		446	455
Polygon256		420	453
Polygon255		431	453
Polygon254		446	453
Polygon253		420	451
Polygon252		429	451
Polygon251		446	451
Polygon250		420	449
Polygon249		427	449
Polygon248		445	449
Polygon247		421	447
Polygon246		425	447
Polygon245		444	447
Polygon244		422	445
Polygon243		442	445
Polygon242		423	444
Polygon241		440	444
Polygon240		425	442
Polygon239		427	440
Group72	+~Group72	420	440
Group5	++Group5	335	440
Group5		335	440

<u>Object Name</u>	<u>Grouping</u>	<u>X</u>	<u>Y</u>
Polyline3		337	447
Polyline2		342	442
Polyline1		335	440
Polygon238		342	467
Polygon237		340	465
Polygon236		338	464
Polygon235		355	464
Polygon234		337	462
Polygon233		355	462
Polygon232		336	460
Polygon231		353	460
Polygon230		359	460
Polygon229		335	458
Polygon228		351	458
Polygon227		360	458
Polygon69		335	456
Polygon68		350	456
Polygon67		361	456
Polygon66		335	455
Polygon65		348	455
Polygon64		361	455
Polygon63		335	453
Polygon62		346	453
Polygon61		361	453
Polygon60		335	451
Polygon59		344	451
Polygon58		361	451
Polygon57		335	449
Polygon56		342	449
Polygon34		360	449
Polygon33		336	447
Polygon32		340	447
Polygon31		359	447
Polygon30		337	445
Polygon29		357	445
Polygon28		338	444
Polygon27		355	444
Polygon26		340	442
Polygon4		342	440
Group5	+--Group5	335	440
Text44		265	445
Text43		140	445
Text42		55	445
Polygon226		45	435
Group71	++Group71	940	400
Group71		940	400
Polygon224		942	401
Polygon223		940	400
Group71	+--Group71	940	400
Group70	++Group70	850	400
Group70		850	400
Polygon221		852	401
Polygon220		850	400
Group70	+--Group70	850	400
Group69	++Group69	760	400
Group69		760	400
Polygon218		762	401
Polygon217		760	400
Group69	+--Group69	760	400
Group68	++Group68	672	400
Group68		672	400
Polygon215		674	401
Polygon214		672	400
Group68	+--Group68	672	400
Group67	++Group67	585	400
Group67		585	400
Polygon212		587	401
Polygon211		585	400
Group67	+--Group67	585	400
Group66	++Group66	500	400
Group66		500	400
Polygon209		502	401
Polygon208		500	400
Group66	+--Group66	500	400
Group65	++Group65	420	400
Group65		420	400
Polygon206		422	401
Polygon205		420	400
Group65	+--Group65	420	400
Group64	++Group64	335	400
Group64		335	400
Polygon203		337	401
Polygon202		335	400
Group64	+--Group64	335	400
Text41		270	405
Text40		140	405
Text39		55	405
Group62	++Group62	420	360
Group62		420	360
Polygon197		422	361
Polygon196		420	360
Group62	+--Group62	420	360
Group61	++Group61	335	360
Group61		335	360
Polygon194		337	361
Polygon193		335	360
Group61	+--Group61	335	360
Text38		270	365



<u>Object Name</u>	<u>Grouping</u>	<u>X</u>	<u>Y</u>
Text37		135	365
Text36		55	365
Text35		950	95
Text34		860	95
Text33		770	95
Text32		680	95
Text31		510	95
Text30		595	95
Text29		430	95
Text28		345	95
Text27		790	75
Text26		450	75
Line5		305	95
Group60	++Group60	940	320
Group60		940	320
Polygon191		942	321
Polygon190		940	320
Group60	+Group60	940	320
Group59	++Group59	850	320
Group59		850	320
Polygon188		852	321
Polygon187		850	320
Group59	+Group59	850	320
Group58	++Group58	760	320
Group58		760	320
Polygon185		762	321
Polygon184		760	320
Group58	+Group58	760	320
Group57	++Group57	672	320
Group57		672	320
Polygon182		674	321
Polygon181		672	320
Group57	+Group57	672	320
Group56	++Group56	587	320
Group56		587	320
Polygon179		589	321
Polygon178		587	320
Group56	+Group56	587	320
Group55	++Group55	500	320
Group55		500	320
Polygon176		502	321
Polygon175		500	320
Group55	+Group55	500	320
Group54	++Group54	420	320
Group54		420	320
Polygon173		422	321
Polygon172		420	320
Group54	+Group54	420	320
Group53	++Group53	335	320
Group53		335	320
Polygon170		337	321
Polygon169		335	320
Group53	+Group53	335	320
Group52	++Group52	940	280
Group52		940	280
Polygon167		942	281
Polygon166		940	280
Group52	+Group52	940	280
Group51	++Group51	850	280
Group51		850	280
Polygon164		852	281
Polygon163		850	280
Group51	+Group51	850	280
Group50	++Group50	760	280
Group50		760	280
Polygon161		762	281
Polygon160		760	280
Group50	+Group50	760	280
Group49	++Group49	672	280
Group49		672	280
Polygon158		674	281
Polygon157		672	280
Group49	+Group49	672	280
Group48	++Group48	587	280
Group48		587	280
Polygon155		589	281
Polygon154		587	280
Group48	+Group48	587	280
Group47	++Group47	500	280
Group47		500	280
Polygon152		502	281
Polygon151		500	280
Group47	+Group47	500	280
Group46	++Group46	420	280
Group46		420	280
Polygon149		422	281
Polygon148		420	280
Group46	+Group46	420	280
Group45	++Group45	335	280
Group45		335	280
Polygon146		337	281
Polygon145		335	280
Group45	+Group45	335	280
Group44	++Group44	940	240
Group44		940	240
Polygon143		942	241
Polygon142		940	240
Group44	+Group44	940	240

<u>Object Name</u>	<u>Grouping</u>	<u>X</u>	<u>Y</u>
Group43	++Group43	850	240
Group43		850	240
Polygon140		852	241
Polygon139		850	240
Group43	+Group43	850	240
Group42	++Group42	760	240
Group42		760	240
Polygon137		762	241
Polygon136		760	240
Group42	+Group42	760	240
Group41	++Group41	672	240
Group41		672	240
Polygon134		674	241
Polygon133		672	240
Group41	+Group41	672	240
Group40	++Group40	587	240
Group40		587	240
Polygon131		589	241
Polygon130		587	240
Group40	+Group40	587	240
Group39	++Group39	500	240
Group39		500	240
Polygon128		502	241
Polygon127		500	240
Group39	+Group39	500	240
Group38	++Group38	420	240
Group38		420	240
Polygon125		422	241
Polygon124		420	240
Group38	+Group38	420	240
Group37	++Group37	335	240
Group37		335	240
Polygon122		337	241
Polygon121		335	240
Group37	+Group37	335	240
Group36	++Group36	940	200
Group36		940	200
Polygon119		942	201
Polygon118		940	200
Group36	+Group36	940	200
Group35	++Group35	850	200
Group35		850	200
Polygon116		852	201
Polygon115		850	200
Group35	+Group35	850	200
Group34	++Group34	760	200
Group34		760	200
Polygon113		762	201
Polygon112		760	200
Group34	+Group34	760	200
Group33	++Group33	672	200
Group33		672	200
Polygon110		674	201
Polygon109		672	200
Group33	+Group33	672	200
Group32	++Group32	587	200
Group32		587	200
Polygon107		589	201
Polygon106		587	200
Group32	+Group32	587	200
Group31	++Group31	500	200
Group31		500	200
Polygon104		502	201
Polygon103		500	200
Group31	+Group31	500	200
Group30	++Group30	420	200
Group30		420	200
Polygon101		422	201
Polygon100		420	200
Group30	+Group30	420	200
Group29	++Group29	335	200
Group29		335	200
Polygon95		337	201
Polygon94		335	200
Group29	+Group29	335	200
Group28	++Group28	940	160
Group28		940	160
Polygon92		942	161
Polygon91		940	160
Group28	+Group28	940	160
Group27	++Group27	850	160
Group27		850	160
Polygon89		852	161
Polygon88		850	160
Group27	+Group27	850	160
Group26	++Group26	760	160
Group26		760	160
Polygon86		762	161
Polygon85		760	160
Group26	+Group26	760	160
Group25	++Group25	672	160
Group25		672	160
Polygon83		674	161
Polygon82		672	160
Group25	+Group25	672	160
Group24	++Group24	587	160
Group24		587	160
Polygon80		589	161

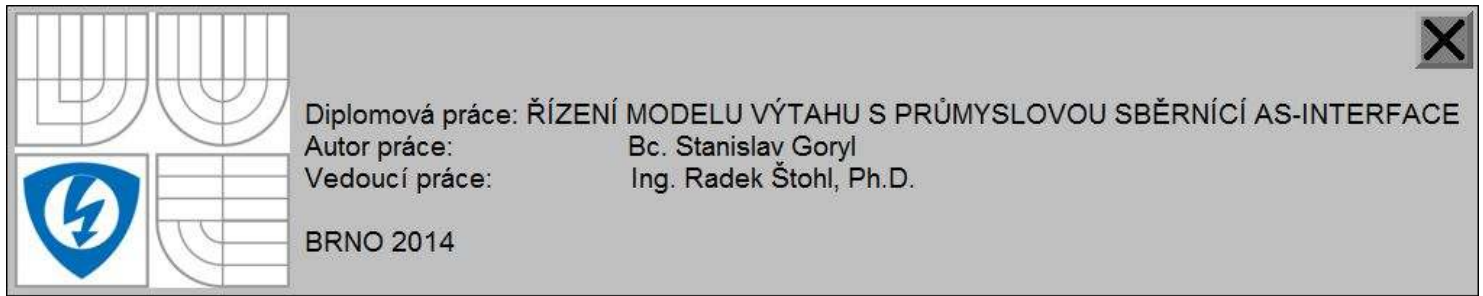
<u>Object Name</u>	<u>Grouping</u>	<u>X</u>	<u>Y</u>
Polygon79		587	160
Group24	+Group24	587	160
Group23	++Group23	500	160
Group23		500	160
Polygon77		502	161
Polygon76		500	160
Group23	+Group23	500	160
Group22	++Group22	420	160
Group22		420	160
Polygon74		422	161
Polygon73		420	160
Group22	+Group22	420	160
Group21	++Group21	335	160
Group21		335	160
Polygon71		337	161
Polygon70		335	160
Group21	+Group21	335	160
Group14	++Group14	587	120
Group14		587	120
Polygon54		589	121
Polygon53		587	120
Group14	+Group14	587	120
Group13	++Group13	500	120
Group13		500	120
Polygon51		502	121
Polygon50		500	120
Group13	+Group13	500	120
Group12	++Group12	420	120
Group12		420	120
Polygon48		422	121
Polygon47		420	120
Group12	+Group12	420	120
Group11	++Group11	940	120
Group11		940	120
Polygon42		942	121
Polygon41		940	120
Group11	+Group11	940	120
Group10	++Group10	850	120
Group10		850	120
Polygon39		852	121
Polygon38		850	120
Group10	+Group10	850	120
Group9	++Group9	760	120
Group9		760	120
Polygon36		762	121
Polygon35		760	120
Group9	+Group9	760	120
Line11		910	95
Line10		820	95
Line9		730	95
Line8		560	95
Line7		390	95
Line6		475	95
Line4		645	75
Group4	++Group4	672	120
Group4		672	120
Polygon24		674	121
Polygon23		672	120
Group4	+Group4	672	120
Text25		270	325
Text24		270	245
Text23		270	285
Text22		270	205
Text21		270	165
Text20		270	125
Line3		305	75
Text19		250	85
Text18		175	85
Text17		55	85
Polygon13		45	76
Text16		140	325
Text15		140	285
Text14		140	245
Text13		140	205
Text12		140	165
Line2		245	75
Text11		140	125
Line1		130	75
Text10		55	325
Text9		55	285
Text8		55	245
Text7		55	205
Group20	++Group20	335	120
Group20		335	120
Polygon98		337	121
Polygon97		335	120
Group20	+Group20	335	120
Text6		55	165
Text5		55	125
Polygon12		45	395
Polygon11		45	355
Polygon10		45	315
Polygon9		45	275
Polygon8		45	235
Polygon7		45	195
Polygon6		45	155
Polygon5		45	115
Text1		393	9

<u>Object Name</u>	<u>Grouping</u>	<u>X</u>	<u>Y</u>
Polygon3		0	0

1.2.3.1.7.5 Tags used by Component

<u>Tag Name</u>	<u>Tag Type</u>	<u>Tag Description</u>
::[PLC1]Program:MainProgram.INC_SNIMAC1		
::[PLC1]Program:MainProgram.INC_SNIMAC2		
::[PLC1]Program:MainProgram.INC_TL_STOP		
::[PLC1]Program:MainProgram.INC_TL_ZVONEK		
::[PLC1]Program:MainProgram.OUT_OSVETLENI		
::[PLC1]Program:MainProgram.OUT_VENTILATO		
R		
::[PLC1]Program:MainProgram.VIZU_ESTOP		
::[PLC1]Program:MainProgram.VIZU_TL_DOL1		
::[PLC1]Program:MainProgram.VIZU_TL_DOL2		
::[PLC1]Program:MainProgram.VIZU_TL_DOL3		
::[PLC1]Program:MainProgram.VIZU_TL_DOL4		
::[PLC1]Program:MainProgram.VIZU_TL_KAB1		
::[PLC1]Program:MainProgram.VIZU_TL_KAB2		
::[PLC1]Program:MainProgram.VIZU_TL_KAB3		
::[PLC1]Program:MainProgram.VIZU_TL_KAB4		
::[PLC1]Program:MainProgram.VIZU_TL_NAH1		
::[PLC1]Program:MainProgram.VIZU_TL_NAH2		
::[PLC1]Program:MainProgram.VIZU_TL_NAH3		
::[PLC1]Program:MainProgram.VIZU_TL_NAH4		
[PLC1]ASi_Input.Data[0].0		
[PLC1]ASi_Input.Data[0].1		
[PLC1]ASi_Input.Data[0].10		
[PLC1]ASi_Input.Data[0].11		
[PLC1]ASi_Input.Data[0].2		
[PLC1]ASi_Input.Data[0].3		
[PLC1]ASi_Input.Data[0].4		
[PLC1]ASi_Input.Data[0].5		
[PLC1]ASi_Input.Data[0].6		
[PLC1]ASi_Input.Data[0].7		
[PLC1]ASi_Input.Data[0].8		
[PLC1]ASi_Input.Data[0].9		
[PLC1]ASi_Input.Data[1].0		
[PLC1]ASi_Input.Data[1].1		
[PLC1]ASi_Input.Data[1].10		
[PLC1]ASi_Input.Data[1].11		
[PLC1]ASi_Input.Data[1].12		
[PLC1]ASi_Input.Data[1].13		
[PLC1]ASi_Input.Data[1].14		
[PLC1]ASi_Input.Data[1].15		
[PLC1]ASi_Input.Data[1].4		
[PLC1]ASi_Input.Data[1].5		
[PLC1]ASi_Input.Data[1].6		
[PLC1]ASi_Input.Data[1].7		
[PLC1]ASi_Input.Data[1].8		
[PLC1]ASi_Input.Data[1].9		
[PLC1]ASi_Input.Data[2].12		
[PLC1]ASi_Input.Data[2].13		
[PLC1]ASi_Input.Data[2].14		
[PLC1]ASi_Input.Data[2].15		
[PLC1]ASi_Input.Data[2].2		
[PLC1]ASi_Input.Data[2].3		
[PLC1]ASi_Output.Data[0].0		
[PLC1]ASi_Output.Data[0].1		
[PLC1]ASi_Output.Data[0].10		
[PLC1]ASi_Output.Data[0].11		
[PLC1]ASi_Output.Data[0].2		
[PLC1]ASi_Output.Data[0].3		
[PLC1]ASi_Output.Data[0].4		
[PLC1]ASi_Output.Data[0].5		
[PLC1]ASi_Output.Data[0].6		
[PLC1]ASi_Output.Data[0].7		
[PLC1]ASi_Output.Data[0].8		
[PLC1]ASi_Output.Data[0].9		
[PLC1]ASi_Output.Data[1].10		
[PLC1]ASi_Output.Data[1].11		
[PLC1]ASi_Output.Data[1].12		
[PLC1]ASi_Output.Data[1].13		
[PLC1]ASi_Output.Data[1].14		
[PLC1]ASi_Output.Data[1].15		
[PLC1]ASi_Output.Data[1].4		
[PLC1]ASi_Output.Data[1].5		
[PLC1]ASi_Output.Data[1].6		
[PLC1]ASi_Output.Data[1].7		
[PLC1]ASi_Output.Data[1].8		
[PLC1]ASi_Output.Data[1].9		
[PLC1]ASi_Output.Data[2].0		
[PLC1]ASi_Output.Data[2].1		
[PLC1]ASi_Output.Data[2].12		
[PLC1]ASi_Output.Data[2].13		
[PLC1]ASi_Output.Data[2].14		
[PLC1]ASi_Output.Data[2].15		
[PLC1]ASi_Output.Data[68]		
[PLC1]ASi_Output.Data[69]		

### 1.2.3.1.8 Graphics\Displays\Z\_KONTAKT



#### 1.2.3.1.8.1 Graphics|Z\_KONTAKT|Display Settings|General

<u>Option</u>	<u>Selection</u>
Display Type	On Top
Security Code	*
Title Bar	NO
Disable Initial Input Focus	NO
Maximum Tag Update Rate	1.00 seconds
Size	Use Current Size
Position X	150
Position Y	446
Background Color	0xC0C0C0

#### 1.2.3.1.8.2 Graphics|Z\_KONTAKT|Display Settings|Behavior

<u>Option</u>	<u>Selection</u>
Startup Command	
Shutdown Command	
Disable Highlight When Object has Focus	NO
Highlight Color of Objects with Input Focus	0x00FF00

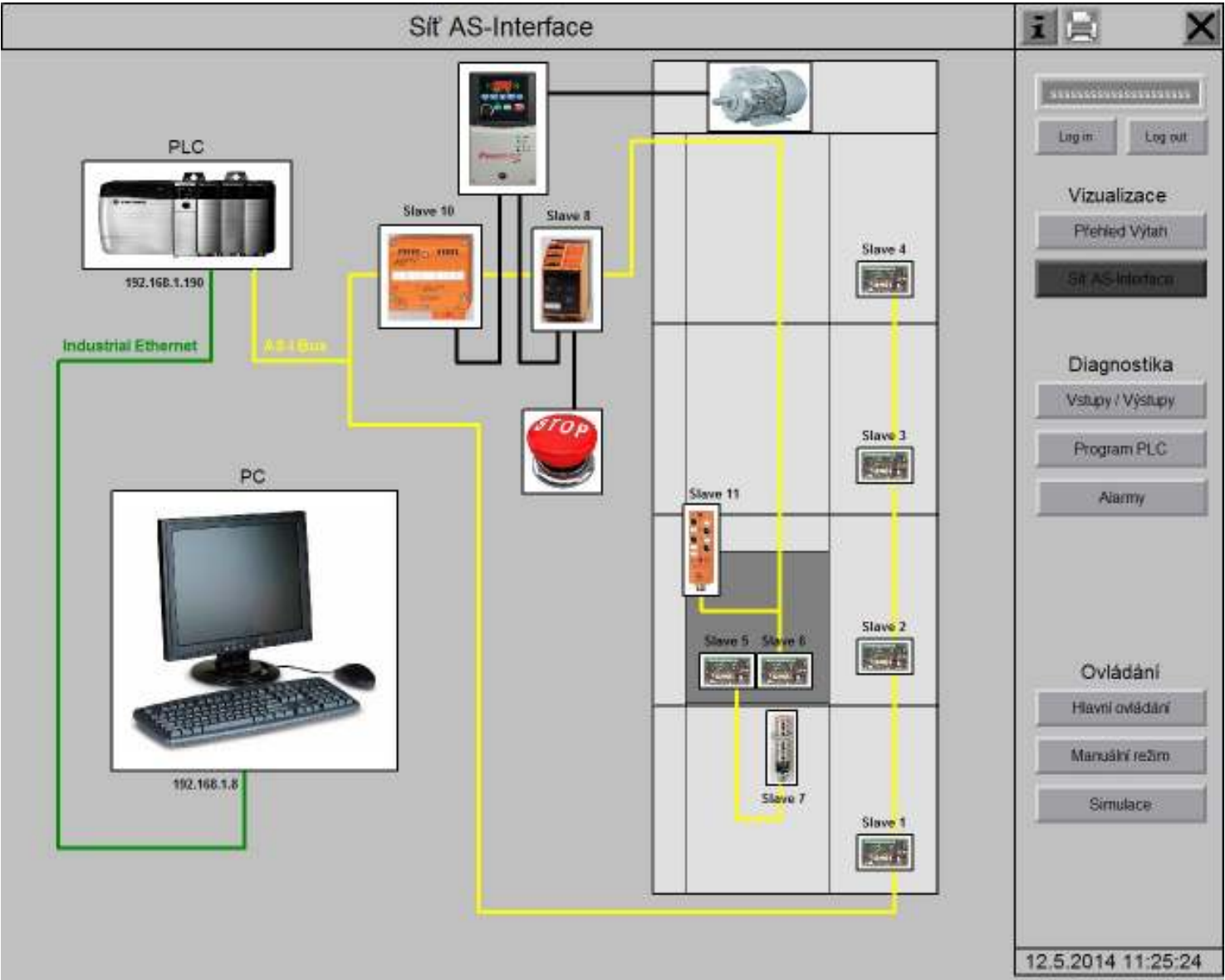
#### 1.2.3.1.8.3 Object Properties

<u>Object Name</u>	<u>Grouping</u>	<u>X</u>	<u>Y</u>
Image1		6	5
CloseDisplayButton1		973	4
Text1		206	64
Polygon1		0	0
Polygon2		0	0

#### 1.2.3.1.8.4 Tags used by Component

<u>Tag Name</u>	<u>Tag Type</u>	<u>Tag Description</u>
-----------------	-----------------	------------------------

1.2.3.1.9 Graphics\Displays\Z\_SIT\_ASI



1.2.3.1.9.1 Graphics\Z\_SIT\_ASI\Display Settings\General

Option	Selection
Display Type	Replace
Display Number	1
Security Code	*
Disable Initial Input Focus	NO
Maximum Tag Update Rate	1.00 seconds
Background Color	0xC0C0C0

1.2.3.1.9.2 Graphics\Z\_SIT\_ASI\Display Settings\Behavior

Option	Selection
Startup Command	
Shutdown Command	
Disable Highlight When Object has Focus	NO
Highlight Color of Objects with Input Focus	0x00FF00

1.2.3.1.9.3 Animated Display Objects

Object Name	Grouping	X	Y	Property	Expression
Group4	++Group4	713	524		
Polygon7		713	524	Polygon: Color Control	{::[PLC1]Program:MainProgram.INC_Ret_LSC_LIST[1].3}
Group4	+~Group4	713	524		
StringDisplay1		1082	75	String Display: Connections: Value	CurrentUserName( )
Group9	++Group9	555	235		
Polygon10		555	235	Polygon: Color Control	{::[PLC1]Program:MainProgram.INC_Ret_LSC_LIST[1].0}
Group9	+~Group9	555	235		

Object Name	Grouping	X	Y	Property	Expression
Group8	++Group8	395	232		
Polygon9		395	232	Polygon: Color Control	{::[PLC1]Program:MainProgram.INC_Ret_LSC_LIST[1].2}
Group8	+Group8	395	232		
Group7	++Group7	478	62		
Polygon11		478	62	Polygon: Color Control	LOG0
Group7	+Group7	478	62		
Group16	++Group16	790	680		
Polygon19		790	680	Polygon: Color Control	{::[PLC1]Program:MainProgram.INC_Ret_LSC_LIST[0].6}
Group16	+Group16	790	680		
Group6	++Group6	730	680		
Polygon13		730	680	Polygon: Color Control	{::[PLC1]Program:MainProgram.INC_Ret_LSC_LIST[0].5}
Group6	+Group6	730	680		
Group15	++Group15	895	870		
Polygon18		895	870	Polygon: Color Control	{::[PLC1]Program:MainProgram.INC_Ret_LSC_LIST[0].1}
Group15	+Group15	895	870		
Group14	++Group14	895	665		
Polygon17		895	665	Polygon: Color Control	{::[PLC1]Program:MainProgram.INC_Ret_LSC_LIST[0].2}
Group14	+Group14	895	665		
Group13	++Group13	895	465		
Polygon16		895	465	Polygon: Color Control	{::[PLC1]Program:MainProgram.INC_Ret_LSC_LIST[0].3}
Group13	+Group13	895	465		
Group12	++Group12	895	270		
Polygon15		895	270	Polygon: Color Control	{::[PLC1]Program:MainProgram.INC_Ret_LSC_LIST[0].4}
Group12	+Group12	895	270		
Polygon20		545	425	Polygon: Color Control	{::[PLC1]Program:MainProgram.VIZU_ESTOP}
Group2	++Group2	115	510		
Polygon4		115	510	Polygon: Color Control	LOG0
Group2	+Group2	115	510		
Group10	++Group10	800	740		
Polygon14		800	740	Polygon: Color Control	{::[PLC1]Program:MainProgram.INC_Ret_LSC_LIST[0].7}
Group10	+Group10	800	740		
Group3	++Group3	85	165		
Polygon8		85	165	Polygon: Color Control	LOG0
Group3	+Group3	85	165		
Group11	++Group11	739	61		
Polygon12		739	61	Polygon: Color Control	LOG0
Group11	+Group11	739	61		

1.2.3.1.9.4 Object Properties

Object Name	Grouping	X	Y
Text20		719	506
Group4	++Group4	713	524
Group4		713	524
Image15		719	531
Group4	+Group4	713	524
Polyline8		731	600
GotoDisplayButton11		1082	819
LogoutButton3		1177	120
LoginButton2		1082	120
GotoDisplayButton10		1082	768
GotoDisplayButton9		1082	718
Text4		1130	689
GotoDisplayButton8		1082	447
GotoDisplayButton6		1082	396
Text3		1117	367
GotoDisplayButton5		1083	498
GotoDisplayButton4		1082	269
GotoDisplayButton3		1082	219
Text2		1117	190
Polygon2		1060	0
GotoDisplayButton2		1066	5
DisplayPrintButton1		1111	5
GotoDisplayButton1		1236	5
TimeDateDisplay1		1060	989
Polygon1		1060	0
Group9	++Group9	555	235
Group9		555	235
Image3		565	245
Group9	+Group9	555	235
Group8	++Group8	395	232
Group8		395	232
Image4		405	242
Group8	+Group8	395	232
Group7	++Group7	478	62
Group7		478	62
Image1		488	72
Group7	+Group7	478	62
Line10		568	93
Polyline6		475	190
Polyline5		541	195
Line9		598	343
Text19		65	350
Text18		275	350
Text14		795	660
Group16	++Group16	790	680
Group16		790	680
Image14		795	685
Group16	+Group16	790	680
Group6	++Group6	730	680
Group6		730	680
Image13		735	685
Group6	+Group6	730	680
Text15		795	825
Text9		900	850

Object Name	Grouping	X	Y
Group15	++Group15	895	870
Group15		895	870
Image12		900	875
Group15	+ -Group15	895	870
Group14	++Group14	895	665
Group14		895	665
Image11		900	670
Group14	+ -Group14	895	665
Text10		900	645
Text11		900	445
Group13	++Group13	895	465
Group13		895	465
Image10		900	470
Group13	+ -Group13	895	465
Group12	++Group12	895	270
Group12		895	270
Image9		900	275
Group12	+ -Group12	895	270
Polyline4		363	295
Polyline3		263	143
Polyline2		658	143
Image5		550	430
Text17		570	215
Text16		420	210
Text13		735	660
Text12		900	250
Text8		175	140
Text7		250	485
Group2	++Group2	115	510
Group2		115	510
Image7		136	530
Group2	+ -Group2	115	510
Text6		180	810
Text5		130	285
Polyline1		58	278
Group10	++Group10	800	740
Group10		800	740
Image2		805	745
Group10	+ -Group10	800	740
Polygon6		716	574
Group5	++Group5	680	60
Group5		680	60
Line8		979	60
Line7		680	60
Line6		681	60
Group1	++Group1	681	136
Group1		681	136
Polygon5		681	136
Line5		866	136
Line4		716	136
Line3		682	735
Line2		682	535
Line1		681	335
Group1	+ -Group1	681	136
Group5	+ -Group5	680	60
Group3	++Group3	85	165
Group3		85	165
Image8		95	175
Group3	+ -Group3	85	165
Group11	++Group11	739	61
Group11		739	61
Image6		744	66
Group11	+ -Group11	739	61
Text1		427	9
Polygon3		0	0
Panel6		680	60

1.2.3.1.9.5 Tags used by Component

Tag Name	Tag Type	Tag Description
::[PLC1]Program:MainProgram.INC_Ret_LSC_LIST[0].1		
::[PLC1]Program:MainProgram.INC_Ret_LSC_LIST[0].2		
::[PLC1]Program:MainProgram.INC_Ret_LSC_LIST[0].3		
::[PLC1]Program:MainProgram.INC_Ret_LSC_LIST[0].4		
::[PLC1]Program:MainProgram.INC_Ret_LSC_LIST[0].5		
::[PLC1]Program:MainProgram.INC_Ret_LSC_LIST[0].6		
::[PLC1]Program:MainProgram.INC_Ret_LSC_LIST[0].7		
::[PLC1]Program:MainProgram.INC_Ret_LSC_LIST[1].0		
::[PLC1]Program:MainProgram.INC_Ret_LSC_LIST[1].2		
::[PLC1]Program:MainProgram.INC_Ret_LSC_LIST[1].3		
::[PLC1]Program:MainProgram.VIZU_ESTOP		
LOG0	Digital Tags	



1.2.3.1.10 Graphics\Displays\A\_MANUAL



1.2.3.1.10.1 Graphics|A\_MANUAL|Display Settings|General

Option	Selection
Display Type	Replace
Display Number	1
Security Code	P
Disable Initial Input Focus	NO
Maximum Tag Update Rate	0.10 seconds
Background Color	0xC0C0C0

1.2.3.1.10.2 Graphics|A\_MANUAL|Display Settings|Behavior

Option	Selection
Startup Command	
Shutdown Command	
Disable Highlight When Object has Focus	NO
Highlight Color of Objects with Input Focus	0x00FF00

1.2.3.1.10.3 Animated Display Objects

Object Name	Grouping	X	Y	Property	Expression
MomentaryPushButton2	.	868	921	Momentary Push Button: Connections: Value	{:[PLC1]Program:MainProgram.VIZU_VYP2} If {:[PLC1]Program:MainProgram.MOD2}=1 Then 0 Else 1
MomentaryPushButton1	.	759	921	Momentary Push Button: Connections: Indicator	
MomentaryPushButton8	.	867	866	Momentary Push Button: Connections: Value	{:[PLC1]Program:MainProgram.VIZU_VYP1} If {:[PLC1]Program:MainProgram.MOD1}=1 Then 0 Else 1
MomentaryPushButton3	.	758	866	Momentary Push Button: Connections: Indicator	

<u>Object Name</u>	<u>Grouping</u>	<u>X</u>	<u>Y</u>	<u>Property</u>	<u>Expression</u>
.	.	.	.	Momentary Push Button: Connections: Indicator	{:[PLC1]Program:MainProgram.MOD1}
MomentaryPushButton28	.	867	810	Momentary Push Button: Connections: Value	{:[PLC1]Program:MainProgram.VIZU_VYP0}
.	.	.	.	Momentary Push Button: Connections: Indicator	If {:[PLC1]Program:MainProgram.MOD0}=1 Then 0 Else 1
MomentaryPushButton27	.	758	810	Momentary Push Button: Connections: Value	{:[PLC1]Program:MainProgram.VIZU_ZAP0}
.	.	.	.	Momentary Push Button: Connections: Indicator	{:[PLC1]Program:MainProgram.MOD0}
Group20	++Group20	735	180		
Polygon99		738	183	Polygon: Color Control	{:[PLC1]Program:MainProgram.MOD2}
Group20	+Group20	735	180		
Group19	++Group19	735	213		
Polygon96		738	216	Polygon: Color Control	{:[PLC1]Program:MainProgram.MOD0}
Group19	+Group19	735	213		
Group17	++Group17	735	145		
Polygon90		738	148	Polygon: Color Control	{:[PLC1]Program:MainProgram.MOD1}
Group17	+Group17	735	145		
StringDisplay1	.	1082	75	String Display: Connections: Value	CurrentUserName( )
Group2	++Group2	427	282		
Polygon9		430	285	Polygon: Color Control	{:[PLC1]Program:MainProgram.OUT_OVL_Mot}
Group2	+Group2	427	282		
NumericDisplay7	.	403	214	Numeric Display: Connections: Value	{:[PLC1]Program:MainProgram.VIZU_MOT_RYCHLOST}
ControlListSelector1	.	108	214	Control List Selector: Connections: Value	{:[PLC1]Program:MainProgram.VIZU_MOD0_RYCHLOST}
MomentaryPushButton6	.	278	366	Momentary Push Button: Connections: Value	{:[PLC1]Program:MainProgram.VIZU_MOD0_MOT_STOP}
MomentaryPushButton5	.	133	366	Momentary Push Button: Connections: Value	{:[PLC1]Program:MainProgram.VIZU_MOD0_MOT_START}
Group22	++Group22	710	289		
Group28	++Group28	735	364		
Polygon214		738	367	Polygon: Color Control	{:[PLC1]Program:MainProgram.INC_SNIMAC2}
Group28	+Group28	735	364		
Group27	++Group27	735	329		
Polygon211		738	332	Polygon: Color Control	{:[PLC1]Program:MainProgram.INC_SNIMAC1}
Group27	+Group27	735	329		
Group22	+Group22	710	289		
MomentaryPushButton9	.	35	214	Momentary Push Button: Connections: Value	{:[PLC1]Program:MainProgram.VIZU_MOD0_UP}
.	.	.	.	Momentary Push Button: Connections: Indicator	{:[PLC1]Program:MainProgram.OUT_MOT_SMER}
MomentaryPushButton7	.	35	278	Momentary Push Button: Connections: Value	{:[PLC1]Program:MainProgram.VIZU_MOD0_DOWN}
.	.	.	.	Momentary Push Button: Connections: Indicator	If {:[PLC1]Program:MainProgram.OUT_MOT_SMER}=0 Then 1 Else 0

### 1.2.3.1.10.4 Object Properties

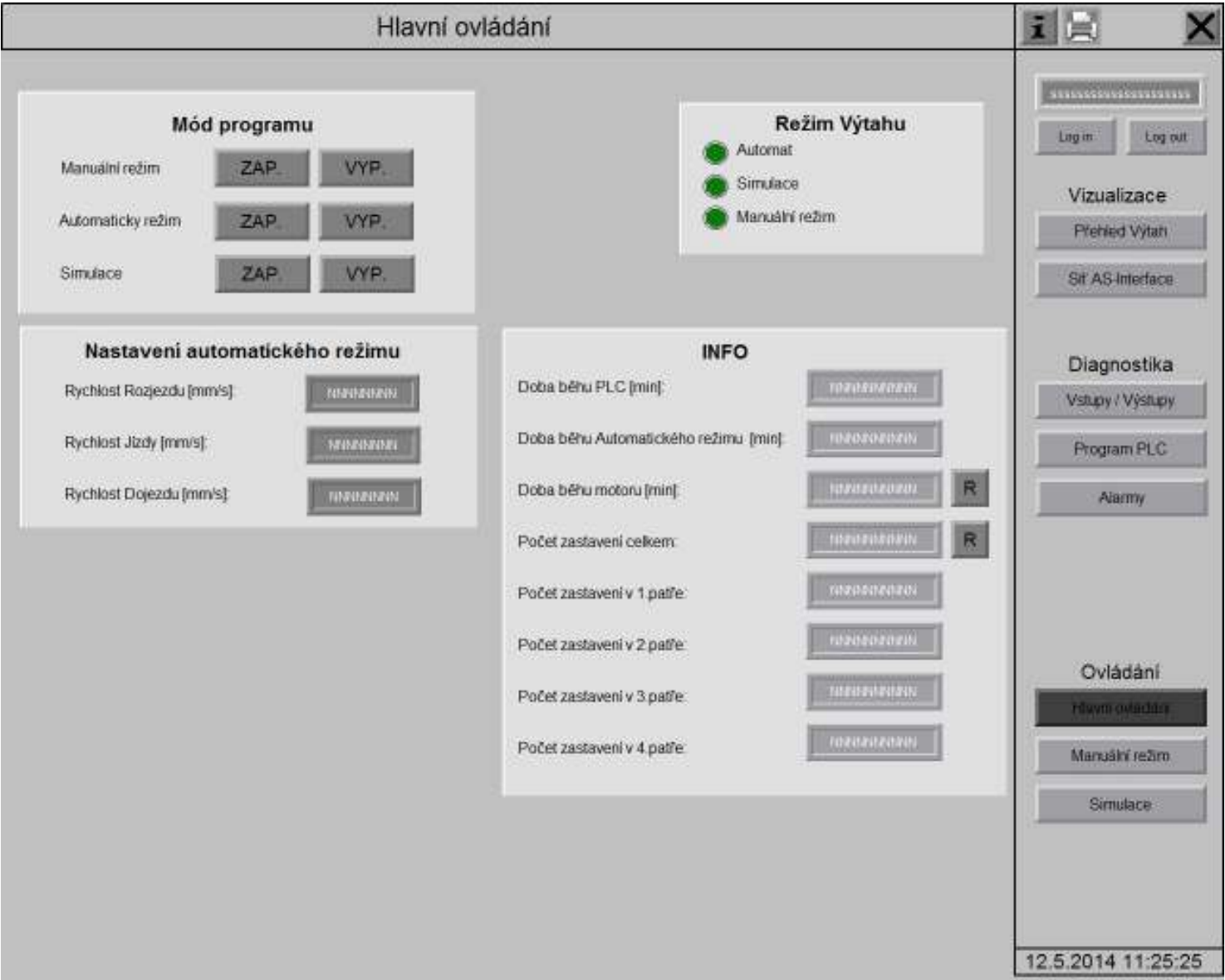
<u>Object Name</u>	<u>Grouping</u>	<u>X</u>	<u>Y</u>
Text9	.	34	180
Text8	.	110	181
Text26	.	597	931
Text23	.	596	876
Text22	.	598	821
Text6	.	714	773
Panel4	.	553	750
Text16	.	770	215
Text15	.	770	180
Text14	.	770	145
Group20	++Group20	735	180
Group20		735	180
Polygon98		736	181
Polygon97		735	180
Group20	+Group20	735	180
Group19	++Group19	735	213
Group19		735	213
Polygon95		736	214
Polygon94		735	213
Group19	+Group19	735	213
Group17	++Group17	735	145
Group17		735	145
Polygon89		736	146
Polygon88		735	145
Group17	+Group17	735	145
Text13	.	810	115
Panel3	.	710	105
GotoDisplayButton11	.	1082	819
LogoutButton3	.	1177	120
LoginButton2	.	1082	120
GotoDisplayButton10	.	1082	768
GotoDisplayButton9	.	1082	718
Text4	.	1130	689
GotoDisplayButton8	.	1082	447
GotoDisplayButton6	.	1082	396
Text3	.	1117	367
GotoDisplayButton5	.	1083	498
GotoDisplayButton4	.	1082	269
GotoDisplayButton3	.	1082	219
Text2	.	1117	190
Polygon2	.	1060	0
GotoDisplayButton2	.	1066	5
DisplayPrintButton1	.	1111	5
GotoDisplayButton1	.	1236	5
TimeDateDisplay1	.	1060	989
Polygon1	.	1060	-4
Group2	++Group2	427	282
Group2		427	282
Polygon8		428	283
Polygon7		427	282
Group2	+Group2	427	282
Text7	.	188	113
Text5	.	373	252
Text12	.	365	181
Text10	.	443	221
Polygon13	.	49	299
Polygon12	.	48	228

<u>Object Name</u>	<u>Grouping</u>	<u>X</u>	<u>Y</u>
Group22	++Group22	710	289
Group22		710	289
Group28	++Group28	735	364
Group28		735	364
Polygon213		736	365
Polygon212		735	364
Group28	+Group28	735	364
Group27	++Group27	735	329
Group27		735	329
Polygon210		736	330
Polygon209		735	329
Group27	+Group27	735	329
Text20		770	364
Text19		770	329
Text18		765	299
Panel5		710	289
Group22	+Group22	710	289
Text1		393	9
Polygon3		0	0
Panel2		356	170
Panel6		25	171
Panel1		18	102

1.2.3.1.10.5 Tags used by Component

<u>Tag Name</u>	<u>Tag Type</u>	<u>Tag Description</u>
:[PLC1]Program:MainProgram.INC_SNIMAC1		
:[PLC1]Program:MainProgram.INC_SNIMAC2		
:[PLC1]Program:MainProgram.MOD0		
:[PLC1]Program:MainProgram.MOD1		
:[PLC1]Program:MainProgram.MOD2		
:[PLC1]Program:MainProgram.OUT_MOT_SMER		
:[PLC1]Program:MainProgram.OUT_OVL_Mot		
:[PLC1]Program:MainProgram.VIZU_MOD0_DOWN		
:[PLC1]Program:MainProgram.VIZU_MOD0_MOT_STAR		
T		
:[PLC1]Program:MainProgram.VIZU_MOD0_MOT_STOP		
:[PLC1]Program:MainProgram.VIZU_MOD0_RYCHLOST		
:[PLC1]Program:MainProgram.VIZU_MOD0_UP		
:[PLC1]Program:MainProgram.VIZU_MOT_RYCHLOST		
:[PLC1]Program:MainProgram.VIZU_VYP0		
:[PLC1]Program:MainProgram.VIZU_VYP1		
:[PLC1]Program:MainProgram.VIZU_VYP2		
:[PLC1]Program:MainProgram.VIZU_ZAP0		
:[PLC1]Program:MainProgram.VIZU_ZAP1		
:[PLC1]Program:MainProgram.VIZU_ZAP2		

1.2.3.1.11 Graphics\Displays\A\_HLAVNI



1.2.3.1.11.1 Graphics|A\_HLAVNI|Display Settings|General

Option	Selection
Display Type	Replace
Display Number	1
Security Code	P
Disable Initial Input Focus	NO
Maximum Tag Update Rate	0.10 seconds
Background Color	0xC0C0C0

1.2.3.1.11.2 Graphics|A\_HLAVNI|Display Settings|Behavior

Option	Selection
Startup Command	
Shutdown Command	
Disable Highlight When Object has Focus	NO
Highlight Color of Objects with Input Focus	0x00FF00

1.2.3.1.11.3 Animated Display Objects

Object Name	Grouping	X	Y	Property	Expression
NumericInputCursorPoint6		320	497	Numeric Input Cursor Point: Connections: Value	(:[PLC1]Program:MainProgram.VIZU_MOD_RYCH_DOJ_mm)
.		.	.	Numeric Input Cursor Point: Connections: Indicator	(:[PLC1]Program:MainProgram.VIZU_MOD_RYCH_DOJ_mm)
NumericInputCursorPoint5		319	443	Numeric Input Cursor Point: Connections: Value	(:[PLC1]Program:MainProgram.VIZU_MOD_RYCH_JIZDA_mm)
.		.	.	Numeric Input Cursor Point: Connections: Indicator	(:[PLC1]Program:MainProgram.VIZU_MOD_RYCH_JIZDA_mm)
NumericInputCursorPoint4		318	389	Numeric Input Cursor Point: Connections: Value	(:[PLC1]Program:MainProgram.VIZU_MOD_RYCH_ROZJ_mm)
.		.	.	Numeric Input Cursor Point: Connections: Indicator	(:[PLC1]Program:MainProgram.VIZU_MOD_RYCH_ROZJ_mm)
Group20	++Group20	735	180		

Object Name	Grouping	X	Y	Property	Expression
Polygon99		738	183	Polygon: Color Control	{:[PLC1]Program:MainProgram.MOD2}
Group20	+~Group20	735	180		
Group19	++Group19	735	213		
Polygon96		738	216	Polygon: Color Control	{:[PLC1]Program:MainProgram.MOD0}
Group19	+~Group19	735	213		
Group17	++Group17	735	145		
Polygon90		738	148	Polygon: Color Control	{:[PLC1]Program:MainProgram.MOD1}
Group17	+~Group17	735	145		
MomentaryPushButton2		333	264	Momentary Push Button: Connections: Value	{:[PLC1]Program:MainProgram.VIZU_VYP2}
.		.	.	Momentary Push Button: Connections: Indicator	If {:[PLC1]Program:MainProgram.MOD2}==1 Then 0 Else 1
MomentaryPushButton1		224	264	Momentary Push Button: Connections: Value	{:[PLC1]Program:MainProgram.VIZU_ZAP2}
.		.	.	Momentary Push Button: Connections: Indicator	{:[PLC1]Program:MainProgram.MOD2}
MomentaryPushButton8		332	209	Momentary Push Button: Connections: Value	{:[PLC1]Program:MainProgram.VIZU_VYP1}
.		.	.	Momentary Push Button: Connections: Indicator	If {:[PLC1]Program:MainProgram.MOD1}==1 Then 0 Else 1
MomentaryPushButton7		223	209	Momentary Push Button: Connections: Value	{:[PLC1]Program:MainProgram.VIZU_ZAP1}
.		.	.	Momentary Push Button: Connections: Indicator	{:[PLC1]Program:MainProgram.MOD1}
MomentaryPushButton28		332	153	Momentary Push Button: Connections: Value	{:[PLC1]Program:MainProgram.VIZU_VYP0}
.		.	.	Momentary Push Button: Connections: Indicator	If {:[PLC1]Program:MainProgram.MOD0}==1 Then 0 Else 1
MomentaryPushButton27		223	153	Momentary Push Button: Connections: Value	{:[PLC1]Program:MainProgram.VIZU_ZAP0}
.		.	.	Momentary Push Button: Connections: Indicator	{:[PLC1]Program:MainProgram.MOD0}
StringDisplay1		1082	75	String Display: Connections: Value	CurrentUserName( )
MomentaryPushButton6		994	488	Momentary Push Button: Connections: Value	{:[PLC1]Program:MainProgram.VIZU_RES_MOTOR}
MomentaryPushButton5		994	542	Momentary Push Button: Connections: Value	{:[PLC1]Program:MainProgram.VIZU_RES_ZASTAVENI}
NumericDisplay8		842	754	Numeric Display: Connections: Value	{:[PLC1]Program:MainProgram.VIZU_MOD1_ZASTAVENI_P4.ACC}
NumericDisplay7		842	701	Numeric Display: Connections: Value	{:[PLC1]Program:MainProgram.VIZU_MOD1_ZASTAVENI_P3.ACC}
NumericDisplay6		842	648	Numeric Display: Connections: Value	{:[PLC1]Program:MainProgram.VIZU_MOD1_ZASTAVENI_P2.ACC}
NumericDisplay5		842	595	Numeric Display: Connections: Value	{:[PLC1]Program:MainProgram.VIZU_MOD1_ZASTAVENI_P1.ACC}
NumericDisplay4		842	542	Numeric Display: Connections: Value	{:[PLC1]Program:MainProgram.VIZU_MOD1_ZASTAVENI_CELKEM}
					}
NumericDisplay3		842	489	Numeric Display: Connections: Value	{:[PLC1]Program:MainProgram.VIZU_MOD1_CHOD_MOT}
NumericDisplay2		842	436	Numeric Display: Connections: Value	{:[PLC1]Program:MainProgram.VIZU_MOD1_CHOD_PRG}
NumericDisplay1		842	383	Numeric Display: Connections: Value	{:[PLC1]Program:MainProgram.VIZU_MOD1_CHOD_PLG}

1.2.3.1.11.4 Object Properties

Object Name	Grouping	X	Y
Text7		67	395
Text16		770	215
Text15		770	180
Text14		770	145
Group20	++Group20	735	180
Group20		735	180
Polygon98		736	181
Polygon97		735	180
Group20	+~Group20	735	180
Group19	++Group19	735	213
Group19		735	213
Polygon95		736	214
Polygon94		735	213
Group19	+~Group19	735	213
Group17	++Group17	735	145
Group17		735	145
Polygon89		736	146
Polygon88		735	145
Group17	+~Group17	735	145
Text13		810	115
Panel3		710	105
Text26		62	274
Text23		61	219
Text22		63	164
GotoDisplayButton11		1082	819
LogoutButton3		1177	120
LoginButton2		1082	120
GotoDisplayButton10		1082	768
GotoDisplayButton9		1082	718
Text4		1130	689
GotoDisplayButton8		1082	447
GotoDisplayButton6		1082	396
Text3		1117	367
GotoDisplayButton5		1083	498
GotoDisplayButton4		1082	269
GotoDisplayButton3		1082	219
Text2		1117	190
Polygon2		1060	0
GotoDisplayButton2		1066	5
DisplayPrintButton1		1111	5
GotoDisplayButton1		1236	5
TimeDateDisplay1		1060	989
Polygon1		1060	0
Text5		88	353
Text10		541	386
Text9		734	354
Text6		179	116
Text1		393	9
Polygon3		0	0
Panel1		18	93
Panel5		20	339
Panel6		525	341

1.2.3.1.11.5 Tags used by Component

Tag Name	Tag Type	Tag Description
{:[PLC1]Program:MainProgram.MOD0}		

<u>Tag Name</u>	<u>Tag Type</u>	<u>Tag Description</u>
::[PLC1]Program:MainProgram.MOD1		
::[PLC1]Program:MainProgram.MOD2		
::[PLC1]Program:MainProgram.VIZU_MOD1_CHOD_MOT		
::[PLC1]Program:MainProgram.VIZU_MOD1_CHOD_PLC		
::[PLC1]Program:MainProgram.VIZU_MOD1_CHOD_PRG		
::[PLC1]Program:MainProgram.VIZU_MOD1_ZASTAVENI_CELKE		
M		
::[PLC1]Program:MainProgram.VIZU_MOD1_ZASTAVENI_P1.ACC		
::[PLC1]Program:MainProgram.VIZU_MOD1_ZASTAVENI_P2.ACC		
::[PLC1]Program:MainProgram.VIZU_MOD1_ZASTAVENI_P3.ACC		
::[PLC1]Program:MainProgram.VIZU_MOD1_ZASTAVENI_P4.ACC		
::[PLC1]Program:MainProgram.VIZU_MOD_RYCH_DOJ_mm		
::[PLC1]Program:MainProgram.VIZU_MOD_RYCH_JIZDA_mm		
::[PLC1]Program:MainProgram.VIZU_MOD_RYCH_ROZJ_mm		
::[PLC1]Program:MainProgram.VIZU_RES_MOTOR		
::[PLC1]Program:MainProgram.VIZU_RES_ZASTAVENI		
::[PLC1]Program:MainProgram.VIZU_VYP0		
::[PLC1]Program:MainProgram.VIZU_VYP1		
::[PLC1]Program:MainProgram.VIZU_VYP2		
::[PLC1]Program:MainProgram.VIZU_ZAP0		
::[PLC1]Program:MainProgram.VIZU_ZAP1		
::[PLC1]Program:MainProgram.VIZU_ZAP2		

1.2.3.1.12 Graphics\Displays\Z\_DIA\_PLC



1.2.3.1.12.1 Graphics|Z\_DIA\_PLC|Display Settings|General

Option	Selection
Display Type	Replace
Display Number	1
Security Code	P
Disable Initial Input Focus	NO
Maximum Tag Update Rate	0.10 seconds
Background Color	0xC0C0C0

1.2.3.1.12.2 Graphics|Z\_DIA\_PLC|Display Settings|Behavior

Option	Selection
Startup Command	
Shutdown Command	
Disable Highlight When Object has Focus	NO
Highlight Color of Objects with Input Focus	0x00FF00

1.2.3.1.12.3 Animated Display Objects

Object Name	Grouping	X	Y	Property	Expression
Group20	++Group20	735	180		
Polygon99		738	183	Polygon: Color Control	{::[PLC1]Program:MainProgram.MOD2}
Group20	+Group20	735	180		
Group19	++Group19	735	213		
Polygon96		738	216	Polygon: Color Control	{::[PLC1]Program:MainProgram.MOD0}
Group19	+Group19	735	213		
Group17	++Group17	735	145		

Object Name	Grouping	X	Y	Property	Expression
Polygon90		738	148	Polygon: Color Control	{::[PLC1]Program:MainProgram.MOD1}
Group17	+~Group17	735	145		
Group7	++Group7	339	200		
Polygon26		342	203	Polygon: Color Control	{::[PLC1]Program:MainProgram.MOD2_BEH}
Group7	+~Group7	339	200		
Group6	++Group6	339	100		
Polygon23		342	103	Polygon: Color Control	{::[PLC1]Program:MainProgram.MOD2_B_INIT_REQ}
Group6	+~Group6	339	100		
Group5	++Group5	339	150		
Polygon20		342	153	Polygon: Color Control	{::[PLC1]Program:MainProgram.MOD2_B_INIT_OK}
Group5	+~Group5	339	150		
StringDisplay1		1082	75	String Display: Connections: Value	CurrentUserName( )
NumericDisplay5		246	442	Numeric Display: Connections: Value	{::[PLC1]Program:MainProgram.VIZU_Pozice_Kabiny_proc}
NumericDisplay4		71	442	Numeric Display: Connections: Value	{::[PLC1]Program:MainProgram.VIZU_Pozice_Kabiny_mm}
NumericDisplay6		442	325	Numeric Display: Connections: Value	{::[PLC1]Program:MainProgram.OUT_OVL_Patro}
Polygon18		230	825	Polygon: Color Control	{::[PLC1]Program:MainProgram.OUT_OVL_SMER_DOLU}
Polygon16		108	825	Polygon: Color Control	{::[PLC1]Program:MainProgram.OUT_OVL_SMER_NAHORU}
Group4	++Group4	160	830		
Polygon15		167	836	Polygon: Color Control	{::[PLC1]Program:MainProgram.OUT_OVL_Mot}
Group4	+~Group4	160	830		
NumericDisplay7		124	938	Numeric Display: Connections: Value	{::[PLC1]Program:MainProgram.VIZU_MOT_RYCHLOST}
Group3	++Group3	78	200		
Polygon12		81	203	Polygon: Color Control	{::[PLC1]Program:MainProgram.MOD1_BEH}
Group3	+~Group3	78	200		
Group2	++Group2	78	100		
Polygon9		81	103	Polygon: Color Control	{::[PLC1]Program:MainProgram.MOD1_B_INIT_REQ}
Group2	+~Group2	78	100		
Group1	++Group1	78	150		
Polygon6		81	153	Polygon: Color Control	{::[PLC1]Program:MainProgram.MOD1_B_INIT_OK}
Group1	+~Group1	78	150		
Group22	++Group22	710	276		
Group28	++Group28	735	351		
Polygon214		738	354	Polygon: Color Control	{::[PLC1]Program:MainProgram.INC_SNIMAC2}
Group28	+~Group28	735	351		
Group27	++Group27	735	316		
Polygon211		738	319	Polygon: Color Control	{::[PLC1]Program:MainProgram.INC_SNIMAC1}
Group27	+~Group27	735	316		
Group22	+~Group22	710	276		
NumericInputCursorPoint3		882	540	Numeric Input Cursor Point: Connections: Value	{::[PLC1]Program:MainProgram.VIZU_MOD_RYCH_DOJ_mm}
				Numeric Input Cursor Point: Connections: Indicator	{::[PLC1]Program:MainProgram.VIZU_MOD_RYCH_DOJ_mm}
NumericInputCursorPoint2		881	486	Numeric Input Cursor Point: Connections: Value	{::[PLC1]Program:MainProgram.VIZU_MOD_RYCH_JIZDA_mm}
				Numeric Input Cursor Point: Connections: Indicator	{::[PLC1]Program:MainProgram.VIZU_MOD_RYCH_JIZDA_mm}
NumericDisplay11		246	325	Numeric Display: Connections: Value	{::[PLC1]Program:MainProgram.MOD_ZASTAV_REQ}
NumericDisplay10		72	325	Numeric Display: Connections: Value	{::[PLC1]Program:MainProgram.MOD_ROZJEZD_REQ}
NumericInputCursorPoint1		880	432	Numeric Input Cursor Point: Connections: Value	{::[PLC1]Program:MainProgram.VIZU_MOD_RYCH_ROZJ_mm}
				Numeric Input Cursor Point: Connections: Indicator	{::[PLC1]Program:MainProgram.VIZU_MOD_RYCH_ROZJ_mm}
NumericDisplay3		876	906	Numeric Display: Connections: Value	{::[PLC1]Program:MainProgram.VIZU_MOD1_CHOD_MOT}
NumericDisplay2		876	853	Numeric Display: Connections: Value	{::[PLC1]Program:MainProgram.VIZU_MOD1_CHOD_PRG}
NumericDisplay1		876	800	Numeric Display: Connections: Value	{::[PLC1]Program:MainProgram.VIZU_MOD1_CHOD_PLC}

### 1.2.3.1.12.4 Object Properties

Object Name	Grouping	X	Y
Text16		770	215
Text15		770	180
Text14		770	145
Group20	++Group20	735	180
Group20		735	180
Polygon98		736	181
Polygon97		735	180
Group20	+~Group20	735	180
Group19	++Group19	735	213
Group19		735	213
Polygon95		736	214
Polygon94		735	213
Group19	+~Group19	735	213
Group17	++Group17	735	145
Group17		735	145
Polygon89		736	146
Polygon88		735	145
Group17	+~Group17	735	145
Text13		810	115
Panel3		710	105
Text30		405	68
Text29		157	63
Text28		375	203
Group7	++Group7	339	200
Group7		339	200
Polygon25		340	201
Polygon24		339	200
Group7	+~Group7	339	200
Text27		374	104
Group6	++Group6	339	100
Group6		339	100
Polygon22		340	101
Polygon21		339	100
Group6	+~Group6	339	100
Text26		374	153
Group5	++Group5	339	150
Group5		339	150
Polygon19		340	151
Polygon17		339	150
Group5	+~Group5	339	150



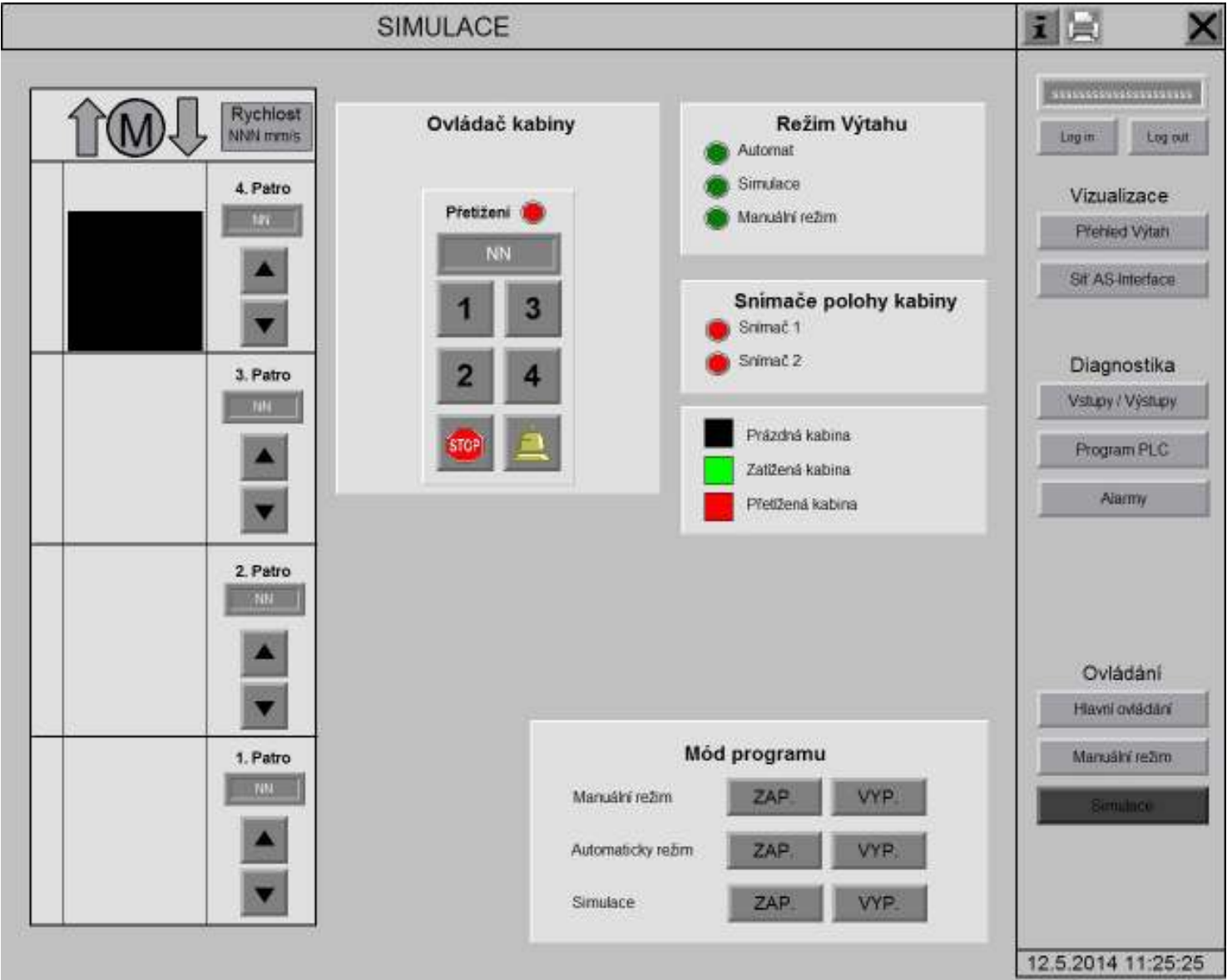
Object Name	Grouping	X	Y
GotoDisplayButton11		1082	819
LogoutButton3		1177	120
LoginButton2		1082	120
GotoDisplayButton10		1082	768
GotoDisplayButton9		1082	718
Text4		1130	689
GotoDisplayButton8		1082	447
GotoDisplayButton6		1082	396
Text3		1117	367
GotoDisplayButton5		1083	498
GotoDisplayButton4		1082	269
GotoDisplayButton3		1082	219
Text2		1117	190
Polygon2		1060	0
GotoDisplayButton2		1066	5
DisplayPrintButton1		1111	5
GotoDisplayButton1		1236	5
TimeDateDisplay1		1060	989
Polygon1		1060	0
Text23		249	410
Text24		66	411
Text25		447	300
Text7		749	610
Text22		168	740
Group4	++Group4	160	830
Group4		160	830
Polygon14		163	832
Polygon13		160	830
Group4	+~Group4	160	830
Text21		97	785
Text17		95	907
Text11		114	203
Group3	++Group3	78	200
Group3		78	200
Polygon11		79	201
Polygon10		78	200
Group3	+~Group3	78	200
Text9		113	103
Group2	++Group2	78	100
Group2		78	100
Polygon8		79	101
Polygon7		78	100
Group2	+~Group2	78	100
Text8		113	153
Group1	++Group1	78	150
Group1		78	150
Polygon5		79	151
Polygon4		78	150
Group1	+~Group1	78	150
Text6		60	300
Text5		629	438
Group22	++Group22	710	276
Group22		710	276
Group28	++Group28	735	351
Group28		735	351
Polygon213		736	352
Polygon212		735	351
Group28	+~Group28	735	351
Group27	++Group27	735	316
Group27		735	316
Polygon210		736	317
Polygon209		735	316
Group27	+~Group27	735	316
Text20		770	351
Text19		770	316
Text18		765	286
Panel5		710	276
Group22	+~Group22	710	276
Text12		233	300
Text10		575	803
Text1		393	9
Polygon3		0	0
Panel1		39	733

1.2.3.1.12.5 Tags used by Component

Tag Name	Tag Type	Tag Description
:[PLC1]Program:MainProgram.INC_SNIMAC1		
:[PLC1]Program:MainProgram.INC_SNIMAC2		
:[PLC1]Program:MainProgram.MOD0		
:[PLC1]Program:MainProgram.MOD1		
:[PLC1]Program:MainProgram.MOD1_B_INIT_OK		
:[PLC1]Program:MainProgram.MOD1_B_INIT_REQ		
:[PLC1]Program:MainProgram.MOD1_BEH		
:[PLC1]Program:MainProgram.MOD2		
:[PLC1]Program:MainProgram.MOD2_B_INIT_OK		
:[PLC1]Program:MainProgram.MOD2_B_INIT_REQ		
:[PLC1]Program:MainProgram.MOD2_BEH		
:[PLC1]Program:MainProgram.MOD_ROZJEZD_REQ		
:[PLC1]Program:MainProgram.MOD_ZASTAV_REQ		
:[PLC1]Program:MainProgram.OUT_OVL_Mot		
:[PLC1]Program:MainProgram.OUT_OVL_Patro		
:[PLC1]Program:MainProgram.OUT_OVL_SMER_DOLU		
:[PLC1]Program:MainProgram.OUT_OVL_SMER_NAHORU		
:[PLC1]Program:MainProgram.VIZU_MOD1_CHOD_MOT		

<u>Tag Name</u>	<u>Tag Type</u>	<u>Tag Description</u>
::[PLC1]Program:MainProgram.VIZU_MOD1_CHOD_PLC		
::[PLC1]Program:MainProgram.VIZU_MOD1_CHOD_PRG		
::[PLC1]Program:MainProgram.VIZU_MOD_RYCH_DOJ_mm		
::[PLC1]Program:MainProgram.VIZU_MOD_RYCH_JIZDA_m		
m		
::[PLC1]Program:MainProgram.VIZU_MOD_RYCH_ROZJ_mm		
::[PLC1]Program:MainProgram.VIZU_MOT_RYCHLOST		
::[PLC1]Program:MainProgram.VIZU_Pozice_Kabiny_mm		
::[PLC1]Program:MainProgram.VIZU_Pozice_Kabiny_proc		

1.2.3.1.13 Graphics\Displays\A\_SIM



1.2.3.1.13.1 Graphics|A\_SIM|Display Settings|General

Option	Selection
Display Type	Replace
Display Number	1
Security Code	P
Disable Initial Input Focus	NO
Maximum Tag Update Rate	0.10 seconds
Background Color	0xC0C0C0

1.2.3.1.13.2 Graphics|A\_SIM|Display Settings|Behavior

Option	Selection
Startup Command	
Shutdown Command	
Disable Highlight When Object has Focus	NO
Highlight Color of Objects with Input Focus	0x00FF00

1.2.3.1.13.3 Animated Display Objects

Object Name	Grouping	X	Y	Property	Expression
Polygon4		70	218	Polygon: Color Control	{:[PLC1]Program:MainProgram.INC_SNIMAC_ZATIZENI}
				Polygon: Vertical Position	
Group20	++Group20	735	180		{:[PLC1]Program:MainProgram.MOD2}
Polygon99		738	183	Polygon: Color Control	
Group20	+Group20	735	180		{:[PLC1]Program:MainProgram.MOD2}
Group19	++Group19	735	213		
Polygon96		738	216	Polygon: Color Control	{:[PLC1]Program:MainProgram.MOD0}

Object Name	Grouping	X	Y	Property	Expression
Group19	+Group19	735	213		
Group17	++Group17	735	145		
Polygon90		738	148	Polygon: Color Control	{:[PLC1]Program:MainProgram.MOD1}
Group17	+Group17	735	145		
Group22	++Group22	711	290		
Group28	++Group28	736	365		
Polygon214		739	368	Polygon: Color Control	{:[PLC1]Program:MainProgram.INC_SNIMAC2}
Group28	+Group28	736	365		
Group27	++Group27	736	330		
Polygon211		739	333	Polygon: Color Control	{:[PLC1]Program:MainProgram.INC_SNIMAC1}
Group27	+Group27	736	330		
Group22	+Group22	711	290		
MomentaryPushButton2		868	921	Momentary Push Button: Connections: Value	{:[PLC1]Program:MainProgram.VIZU_VYP2}
				Momentary Push Button: Connections: Indicator	If {:[PLC1]Program:MainProgram.MOD2}==1 Then 0 Else 1
MomentaryPushButton1		759	921	Momentary Push Button: Connections: Value	{:[PLC1]Program:MainProgram.VIZU_ZAP2}
				Momentary Push Button: Connections: Indicator	{:[PLC1]Program:MainProgram.MOD2}
MomentaryPushButton8		867	866	Momentary Push Button: Connections: Value	{:[PLC1]Program:MainProgram.VIZU_VYP1}
				Momentary Push Button: Connections: Indicator	If {:[PLC1]Program:MainProgram.MOD1}==1 Then 0 Else 1
MomentaryPushButton3		758	866	Momentary Push Button: Connections: Value	{:[PLC1]Program:MainProgram.VIZU_ZAP1}
				Momentary Push Button: Connections: Indicator	{:[PLC1]Program:MainProgram.MOD1}
MomentaryPushButton28		867	810	Momentary Push Button: Connections: Value	{:[PLC1]Program:MainProgram.VIZU_VYP0}
				Momentary Push Button: Connections: Indicator	If {:[PLC1]Program:MainProgram.MOD0}==1 Then 0 Else 1
MomentaryPushButton27		758	810	Momentary Push Button: Connections: Value	{:[PLC1]Program:MainProgram.VIZU_ZAP0}
				Momentary Push Button: Connections: Indicator	{:[PLC1]Program:MainProgram.MOD0}
StringDisplay1		1082	75	String Display: Connections: Value	CurrentUserName( )
NumericDisplay5		233	606	Numeric Display: Connections: Value	{:[PLC1]Program:MainProgram.OUT_OVL_Patro}
NumericDisplay4		233	804	Numeric Display: Connections: Value	{:[PLC1]Program:MainProgram.OUT_OVL_Patro}
NumericDisplay3		231	405	Numeric Display: Connections: Value	{:[PLC1]Program:MainProgram.OUT_OVL_Patro}
Group21	++Group21	440	195		
Group7	++Group7	543	207		
Polygon46		546	210	Polygon: Color Control	{:[PLC1]Program:MainProgram.VIZU_PRETIZENI}
Group7	+Group7	543	207		
Group6	++Group6	440	195		
NumericDisplay8		455	240	Numeric Display: Connections: Value	{:[PLC1]Program:MainProgram.OUT_OVL_Patro}
LatchedPushButton14		525	430	Latched Push Button: Connections: Value	TAG1
				Latched Push Button: Connections: Indicator	{:[PLC1]Program:MainProgram.MOD2_ZVONEK}
				Latched Push Button: Connections: Handshake	LOG0
LatchedPushButton13		455	430	Latched Push Button: Connections: Value	{:[PLC1]Program:MainProgram.MOD2_STOP_KABINA}
				Latched Push Button: Connections: Indicator	{:[PLC1]Program:MainProgram.MOD2_STOP_KABINA}
				Latched Push Button: Connections: Handshake	LOG0
LatchedPushButton12		525	360	Latched Push Button: Connections: Value	{:[PLC1]Program:MainProgram.MOD2_TL_KAB.3}
				Latched Push Button: Connections: Indicator	{:[PLC1]Program:MainProgram.MOD2_TL_KAB.3}
				Latched Push Button: Connections: Handshake	LOG0
LatchedPushButton11		526	290	Latched Push Button: Connections: Value	{:[PLC1]Program:MainProgram.MOD2_TL_KAB.2}
				Latched Push Button: Connections: Indicator	{:[PLC1]Program:MainProgram.MOD2_TL_KAB.2}
				Latched Push Button: Connections: Handshake	LOG0
LatchedPushButton10		455	360	Latched Push Button: Connections: Value	{:[PLC1]Program:MainProgram.MOD2_TL_KAB.1}
				Latched Push Button: Connections: Indicator	{:[PLC1]Program:MainProgram.MOD2_TL_KAB.1}
				Latched Push Button: Connections: Handshake	LOG0
LatchedPushButton1		455	290	Latched Push Button: Connections: Value	{:[PLC1]Program:MainProgram.MOD2_TL_KAB.0}
				Latched Push Button: Connections: Indicator	{:[PLC1]Program:MainProgram.MOD2_TL_KAB.0}
				Latched Push Button: Connections: Handshake	LOG0
Group6	+Group6	440	195		
Group21	+Group21	440	195		
NumericDisplay7		232	124	Numeric Display: Connections: Value	{:[PLC1]Program:MainProgram.VIZU_MOT_RYCHLOST}
Polygon18		174	99	Polygon: Color Control	{:[PLC1]Program:MainProgram.OUT_OVL_SMER_DOLU}
Polygon8		69	99	Polygon: Color Control	{:[PLC1]Program:MainProgram.OUT_OVL_SMER_NAHORU}
Group4	++Group4	110	100		
Ellipse1		110	100	Ellipse: Color Control	{:[PLC1]Program:MainProgram.OUT_OVL_Mot}
Group4	+Group4	110	100		
NumericDisplay6		230	210	Numeric Display: Connections: Value	{:[PLC1]Program:MainProgram.OUT_OVL_Patro}
LatchedPushButton9		250	255	Latched Push Button: Connections: Value	TAG1
				Latched Push Button: Connections: Indicator	{:[PLC1]Program:MainProgram.VIZU_TL_NAH4}
				Latched Push Button: Connections: Handshake	LOG0
LatchedPushButton8		250	310	Latched Push Button: Connections: Value	{:[PLC1]Program:MainProgram.MOD2_TL_DOL.3}
				Latched Push Button: Connections: Indicator	{:[PLC1]Program:MainProgram.MOD2_TL_DOL.3}
				Latched Push Button: Connections: Handshake	LOG0
LatchedPushButton7		250	450	Latched Push Button: Connections: Value	{:[PLC1]Program:MainProgram.MOD2_TL_NAH.2}
				Latched Push Button: Connections: Indicator	{:[PLC1]Program:MainProgram.MOD2_TL_NAH.2}
				Latched Push Button: Connections: Handshake	LOG0
LatchedPushButton6		250	505	Latched Push Button: Connections: Value	{:[PLC1]Program:MainProgram.MOD2_TL_DOL.2}
				Latched Push Button: Connections: Indicator	{:[PLC1]Program:MainProgram.MOD2_TL_DOL.2}
				Latched Push Button: Connections: Handshake	LOG0
LatchedPushButton5		250	655	Latched Push Button: Connections: Value	{:[PLC1]Program:MainProgram.MOD2_TL_NAH.1}
				Latched Push Button: Connections: Indicator	{:[PLC1]Program:MainProgram.MOD2_TL_NAH.1}
				Latched Push Button: Connections: Handshake	LOG0
LatchedPushButton4		250	710	Latched Push Button: Connections: Value	{:[PLC1]Program:MainProgram.MOD2_TL_DOL.1}
				Latched Push Button: Connections: Indicator	{:[PLC1]Program:MainProgram.MOD2_TL_DOL.1}
				Latched Push Button: Connections: Handshake	LOG0
LatchedPushButton2		250	850	Latched Push Button: Connections: Value	{:[PLC1]Program:MainProgram.MOD2_TL_NAH.0}
				Latched Push Button: Connections: Indicator	{:[PLC1]Program:MainProgram.MOD2_TL_NAH.0}
				Latched Push Button: Connections: Handshake	LOG0
LatchedPushButton3		250	905	Latched Push Button: Connections: Value	TAG1
				Latched Push Button: Connections: Indicator	{:[PLC1]Program:MainProgram.VIZU_TL_DOL1}
				Latched Push Button: Connections: Handshake	LOG0

## 1.2.3.1.13.4 Object Properties

Object Name	Grouping	X	Y
Polygon19		735	512
Polygon7		735	474
Text24		779	442
Polygon6		735	435
Panel7		711	422
Text16		770	215

<u>Object Name</u>	<u>Grouping</u>	<u>X</u>	<u>Y</u>
Text15		770	180
Text14		770	145
Group20	++Group20	735	180
Group20		735	180
Polygon98		736	181
Polygon97		735	180
Group20	+Group20	735	180
Group19	++Group19	735	213
Group19		735	213
Polygon95		736	214
Polygon94		735	213
Group19	+Group19	735	213
Group17	++Group17	735	145
Group17		735	145
Polygon89		736	146
Polygon88		735	145
Group17	+Group17	735	145
Text13		810	115
Panel3		710	105
Group22	++Group22	711	290
Group22		711	290
Group28	++Group28	736	365
Group28		736	365
Polygon213		737	366
Polygon212		736	365
Group28	+Group28	736	365
Group27	++Group27	736	330
Group27		736	330
Polygon210		737	331
Polygon209		736	330
Group27	+Group27	736	330
Text20		771	365
Text19		771	330
Text18		766	300
Panel5		711	290
Group22	+Group22	711	290
Text26		597	931
Text23		596	876
Text22		598	821
Text21		714	773
Panel6		553	750
GotoDisplayButton11		1082	819
LogoutButton3		1177	120
LoginButton2		1082	120
GotoDisplayButton10		1082	768
GotoDisplayButton9		1082	718
Text4		1130	689
GotoDisplayButton8		1082	447
GotoDisplayButton6		1082	396
Text3		1117	367
GotoDisplayButton5		1083	498
GotoDisplayButton4		1082	269
GotoDisplayButton3		1082	219
Text2		1117	190
Polygon2		1060	0
GotoDisplayButton2		1066	5
DisplayPrintButton1		1111	5
GotoDisplayButton1		1236	5
TimeDateDisplay1		1060	989
Polygon1		1060	0
Text17		445	115
Group21	++Group21	440	195
Group21		440	195
Group7	++Group7	543	207
Group7		543	207
Polygon45		544	208
Polygon44		543	207
Group7	+Group7	543	207
Group6	++Group6	440	195
Group6		440	195
Group16	++Group16	465	445
Group16		465	445
Polygon87		486	458
Polygon86		495	458
Polygon85		469	456
Polygon84		477	456
Polygon83		484	456
Polygon82		494	456
Polygon81		466	446
Polygon80		465	445
Group16	+Group16	465	445
Group10	++Group10	535	440
Group10		535	440
Polygon79		543	450
Polygon78		540	448
Polygon77		537	471
Polygon76		535	470
Polygon75		554	440
Polygon74		553	440
Group10	+Group10	535	440
Text11		465	210
Panel1		440	195
Group6	+Group6	440	195
Group21	+Group21	440	195
Panel4		350	105
Text12		240	105
Text10		275	130
Group4	++Group4	110	100

Object Name	Grouping	X	Y
Group4		110	100
Text9		122	106
Group4		110	100
Text8	+-Group4	245	185
Polygon17		265	330
Polygon16		265	270
Text7		245	380
Polygon15		265	525
Polygon14		265	465
Text6		245	585
Polygon13		265	730
Polygon12		265	670
Text5		245	780
Polygon11		265	925
Polygon10		265	865
Text1		393	9
Polygon3		0	0
Polygon9		230	105
Group5	++Group5	29	89
Group5		29	89
Line8		328	89
Line7		29	89
Line6		30	89
Group1		30	165
Group1	++Group1	30	165
Polygon5		30	165
Line5		215	165
Line4		65	165
Line3		31	766
Line2		31	565
Line1		30	365
Group1		30	165
Group5		29	89
Panel2	+-Group5	30	90

1.2.3.1.13.5 Tags used by Component

Tag Name	Tag Type	Tag Description
::[PLC1]Program:MainProgram.INC_SNIMAC1	Digital Tags	Jen pro zapis hodnoty, nevyužívá se
::[PLC1]Program:MainProgram.INC_SNIMAC2		
::[PLC1]Program:MainProgram.INC_SNIMAC_ZATIZENI		
::[PLC1]Program:MainProgram.MOD0		
::[PLC1]Program:MainProgram.MOD1		
::[PLC1]Program:MainProgram.MOD2		
::[PLC1]Program:MainProgram.MOD2_STOP_KABINA		
::[PLC1]Program:MainProgram.MOD2_TL_DOL.1		
::[PLC1]Program:MainProgram.MOD2_TL_DOL.2		
::[PLC1]Program:MainProgram.MOD2_TL_DOL.3		
::[PLC1]Program:MainProgram.MOD2_TL_KAB.0		
::[PLC1]Program:MainProgram.MOD2_TL_KAB.1		
::[PLC1]Program:MainProgram.MOD2_TL_KAB.2		
::[PLC1]Program:MainProgram.MOD2_TL_KAB.3		
::[PLC1]Program:MainProgram.MOD2_TL_NAH.0		
::[PLC1]Program:MainProgram.MOD2_TL_NAH.1		
::[PLC1]Program:MainProgram.MOD2_TL_NAH.2		
::[PLC1]Program:MainProgram.MOD2_ZVONEK		
::[PLC1]Program:MainProgram.OUT_OVL_Mot		
::[PLC1]Program:MainProgram.OUT_OVL_Patro		
::[PLC1]Program:MainProgram.OUT_OVL_SMER_DOLU		
::[PLC1]Program:MainProgram.OUT_OVL_SMER_NAHORU		
::[PLC1]Program:MainProgram.VIZU_MOT_RYCHLOST		
::[PLC1]Program:MainProgram.VIZU_Pozice_Kabiny_proc2		
::[PLC1]Program:MainProgram.VIZU_PRETIZENI		
::[PLC1]Program:MainProgram.VIZU_TL_DOL1		
::[PLC1]Program:MainProgram.VIZU_TL_NAH4		
::[PLC1]Program:MainProgram.VIZU_VYP0		
::[PLC1]Program:MainProgram.VIZU_VYP1		
::[PLC1]Program:MainProgram.VIZU_VYP2		
::[PLC1]Program:MainProgram.VIZU_ZAP0		
::[PLC1]Program:MainProgram.VIZU_ZAP1		
::[PLC1]Program:MainProgram.VIZU_ZAP2		
LOG0		
TAG1		

1.2.3.3.14 Graphics\Images\Arrow Down



<u>Option</u>	<u>Selection</u>
Image file name	C:\Users\Public\Documents\RSView Enterprise\ME\HMI Projects\VytahVizu1\Images\Arrow Down.bmp
Pixel dimension	43 x 43
Format	Bitmap
Type	Monochrome

1.2.3.3.15 Graphics\Images\Arrow Left



<u>Option</u>	<u>Selection</u>
Image file name	C:\Users\Public\Documents\RSView Enterprise\ME\HMI Projects\VytahVizu1\Images\Arrow Left.bmp
Pixel dimension	43 x 43
Format	Bitmap
Type	Monochrome



1.2.3.3.16 Graphics\Images\Arrow Right



<u>Option</u>	<u>Selection</u>
Image file name	C:\Users\Public\Documents\RSView Enterprise\ME\HMI Projects\VytahVizu1\Images\Arrow Right.bmp
Pixel dimension	43 x 43
Format	Bitmap
Type	Monochrome

1.2.3.3.17 Graphics\Images\Arrow Up



<u>Option</u>	<u>Selection</u>
Image file name	C:\Users\Public\Documents\RSView Enterprise\ME\HMI Projects\VytahVizu1\Images\Arrow Up.bmp
Pixel dimension	43 x 43
Format	Bitmap
Type	Monochrome

1.2.3.3.18 Graphics\Images\Backspace



<u>Option</u>	<u>Selection</u>
Image file name	C:\Users\Public\Documents\RSView Enterprise\ME\HMI Projects\VytahVizu1\Images\Backspace.bmp
Pixel dimension	43 x 43
Format	Bitmap
Type	Monochrome

1.2.3.3.19 Graphics\Images\End



<u>Option</u>	<u>Selection</u>
Image file name	C:\Users\Public\Documents\RSView Enterprise\ME\HMI Projects\VytahVizu1\Images\End.bmp
Pixel dimension	43 x 43
Format	Bitmap
Type	Monochrome

1.2.3.3.20 Graphics\Images\Enter



<u>Option</u>	<u>Selection</u>
Image file name	C:\Users\Public\Documents\RSView Enterprise\ME\HMI Projects\VytahVizu1\Images\Enter.bmp
Pixel dimension	43 x 43
Format	Bitmap
Type	Monochrome

1.2.3.3.21 Graphics\Images\Home



<u>Option</u>	<u>Selection</u>
Image file name	C:\Users\Public\Documents\RSView Enterprise\ME\HMI Projects\VytahVizu1\Images\Home.bmp
Pixel dimension	43 x 43
Format	Bitmap
Type	Monochrome

1.2.3.3.22 Graphics\Images\Page Down



<u>Option</u>	<u>Selection</u>
Image file name	C:\Users\Public\Documents\RSView Enterprise\ME\HMI Projects\VytahVizu1\Images\Page Down.bmp
Pixel dimension	43 x 43
Format	Bitmap
Type	Monochrome

1.2.3.3.23 Graphics\Images\Page Up



<u>Option</u>	<u>Selection</u>
Image file name	C:\Users\Public\Documents\RSView Enterprise\ME\HMI Projects\VytahVizu1\Images\Page Up.bmp
Pixel dimension	43 x 43
Format	Bitmap
Type	Monochrome



1.2.3.3.24 Graphics\Images\\_AC\_neco



<u>Option</u>	<u>Selection</u>
Image file name	C:\Users\Public\Documents\RSView Enterprise\ME\HMI Projects\VytahVizu1\Images\_AC_neco.bmp
Pixel dimension	273 x 145
Format	Bitmap
Type	16777216 color

1.2.3.3.25 Graphics\Images\\_AC2258



<u>Option</u>	<u>Selection</u>
Image file name	C:\Users\Public\Documents\RSView Enterprise\ME\HMI Projects\VytahVizu1\Images\_AC2258.bmp
Pixel dimension	96 x 165
Format	Bitmap
Type	16777216 color

1.2.3.3.26 Graphics\Images\\_ac2618



<u>Option</u>	<u>Selection</u>
Image file name	C:\Users\Public\Documents\RSView Enterprise\ME\HMI Projects\VytahVizu1\Images\_ac2618.bmp
Pixel dimension	182 x 176
Format	Bitmap
Type	16777216 color

1.2.3.3.27 Graphics\Images\\_ig5886



<u>Option</u>	<u>Selection</u>
Image file name	C:\Users\Public\Documents\RSView Enterprise\ME\HMI Projects\VytahVizu1\Images\_ig5886.bmp
Pixel dimension	72 x 221
Format	Bitmap
Type	16777216 color

1.2.3.3.28 Graphics\Images\\_motor



<u>Option</u>	<u>Selection</u>
Image file name	C:\Users\Public\Documents\RSView Enterprise\ME\HMI Projects\VytahVizu1\Images\_motor.bmp
Pixel dimension	545 x 407
Format	Bitmap
Type	16777216 color

1.2.3.3.29 Graphics\Images\\_PLC



<u>Option</u>	<u>Selection</u>
Image file name	C:\Users\Public\Documents\RSView Enterprise\ME\HMI Projects\VytahVizu1\Images\_PLC.bmp
Pixel dimension	559 x 363
Format	Bitmap
Type	16777216 color

1.2.3.3.30 Graphics\Images\\_powerflex40



Option	Selection
Image file name	C:\Users\Public\Documents\RSView Enterprise\ME\HMI Projects\VytahVizu1\Images\_powerflex40.bmp
Pixel dimension	289 x 506
Format	Bitmap
Type	16777216 color

1.2.3.3.31 Graphics\Images\\_stop\_but



Option	Selection
Image file name	C:\Users\Public\Documents\RSView Enterprise\ME\HMI Projects\VytahVizu1\Images\_stop_but.bmp
Pixel dimension	151 x 169
Format	Bitmap
Type	16777216 color



1.2.3.3.32 Graphics\Images\exit\_X



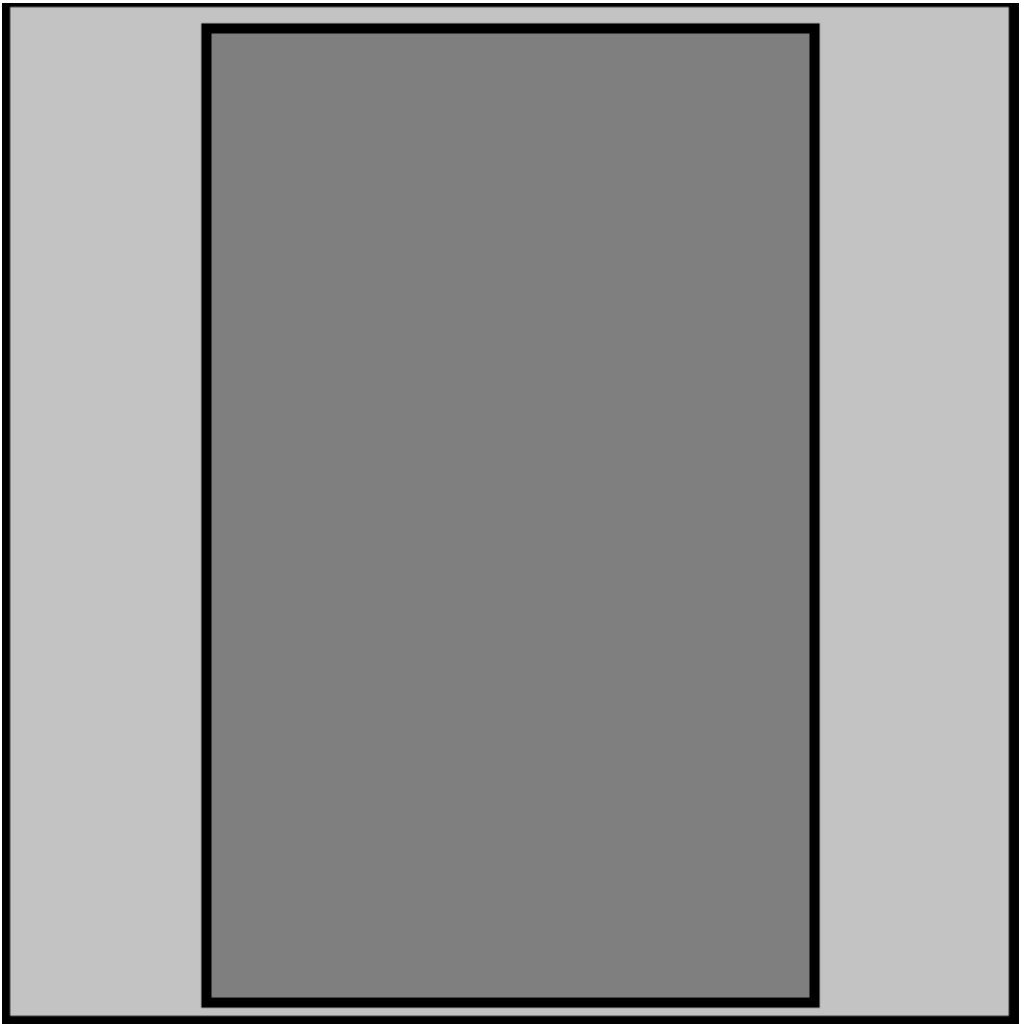
<u>Option</u>	<u>Selection</u>
Image file name	C:\Users\Public\Documents\RSView Enterprise\ME\HMI Projects\VytahVizu1\Images\exit_X.bmp
Pixel dimension	32 x 32
Format	Bitmap
Type	16777216 color

1.2.3.3.33 Graphics\Images\info\_i



<u>Option</u>	<u>Selection</u>
Image file name	C:\Users\Public\Documents\RSView Enterprise\ME\HMI Projects\VytahVizu1\Images\info_i.bmp
Pixel dimension	32 x 32
Format	Bitmap
Type	16777216 color

1.2.3.3.34 Graphics\Images\kabina\_vytah



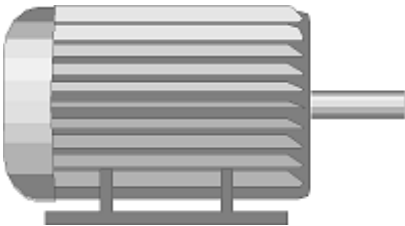
<u>Option</u>	<u>Selection</u>
Image file name	C:\Users\Public\Documents\RSView Enterprise\ME\HMI Projects\VytahVizu1\Images\kabina_vytah.bmp
Pixel dimension	500 x 502
Format	Bitmap
Type	16777216 color

1.2.3.3.35 Graphics\Images\print



<u>Option</u>	<u>Selection</u>
Image file name	C:\Users\Public\Documents\RSView Enterprise\ME\HMI Projects\VytahVizu1\Images\print.bmp
Pixel dimension	32 x 32
Format	Bitmap
Type	16777216 color

1.2.3.3.36 Graphics\Images\motor



<u>Option</u>	<u>Selection</u>
Image file name	C:\Users\Public\Documents\RSView Enterprise\ME\HMI Projects\VytahVizu1\Images\motor.bmp
Pixel dimension	198 x 108
Format	Bitmap
Type	True color

1.2.3.3.37 Graphics\Images\\_pc



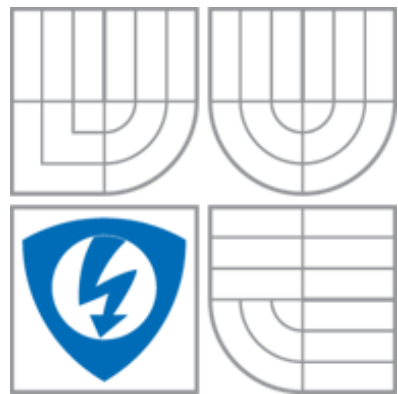
<u>Option</u>	<u>Selection</u>
Image file name	C:\Users\Public\Documents\RSView Enterprise\ME\HMI Projects\VytahVizu1\Images\_pc.bmp
Pixel dimension	604 x 565
Format	Bitmap
Type	16777216 color

1.2.3.3.38 Graphics\Images\AC2482



Option	Selection
Image file name	C:\Users\Public\Documents\RSView Enterprise\ME\HMI Projects\VytahVizu1\Images\AC2482.bmp
Pixel dimension	60 x 184
Format	Bitmap
Type	16777216 color

1.2.3.3.39 Graphics\Images\vut\_logo



Option	Selection
Image file name	C:\Users\Public\Documents\RSView Enterprise\ME\HMI Projects\VytahVizu1\Images\vut_logo.bmp
Pixel dimension	190 x 190
Format	Bitmap
Type	16777216 color

1.2.3.4.39 Graphics\Parameters

1.2.3.5.39 Graphics\Local Messages



1.2.4 ALARMS

1.2.4.1 Alarms\Alarm Setup

1.2.4.1.1 Triggers

Triggers	Trigger Type	Trigger Label	Use Ack All	Ack All Value	Handshake	Ack	Remote Ack	Remote Ack HandShake	Messages	Messages Notification	Messages HandShake
::[PLC1]Program:MainProgram.VIZU_ESTOP}	Value	Alarm1	NO	0							
::[PLC1]Program:MainProgram.INC_TL_STOP}	Value	Alarm2	NO	0							
::[PLC1]Program:MainProgram.VIZU_MOD_SP OJENI}	Value	Alarm3	NO	0							
::[PLC1]Program:MainProgram.INC_Ret_LSC_LIST[0].1}	Value	Slave 1	NO	0							
::[PLC1]Program:MainProgram.INC_Ret_LSC_LIST[0].2}	Value	Slave 2	NO	0							
::[PLC1]Program:MainProgram.INC_Ret_LSC_LIST[0].3}	Value	Slave 3	NO	0							
::[PLC1]Program:MainProgram.INC_Ret_LSC_LIST[0].4}	Value	Slave 4	NO	0							
::[PLC1]Program:MainProgram.INC_Ret_LSC_LIST[0].5}	Value	Slave 5	NO	0							
::[PLC1]Program:MainProgram.INC_Ret_LSC_LIST[0].6}	Value	Slave 6	NO	0							
::[PLC1]Program:MainProgram.INC_Ret_LSC_LIST[0].7}	Value	Slave 7	NO	0							
::[PLC1]Program:MainProgram.INC_Ret_LSC_LIST[1].0}	Value	Slave 8	NO	0							
::[PLC1]Program:MainProgram.INC_Ret_LSC_LIST[1].1}	Value	Slave 9	NO	0							
::[PLC1]Program:MainProgram.INC_Ret_LSC_LIST[1].2}	Value	Slave 10	NO	0							
::[PLC1]Program:MainProgram.INC_Ret_LSC_LIST[1].3}	Value	Slave 11	NO	0							

1.2.4.1.2 Messages

Triggers	Trigger value	Messages	Display	Audio	Print	Message to Tag	Background	Foreground
::[PLC1]Program:MainProgram.VIZU_ESTOP}	1	Aktivování nouzové STOP tlačítko, nebo SAFETY snímač kabiny	YES	NO	NO	NO	#800000	#FFFFFF
::[PLC1]Program:MainProgram.INC_TL_STOP}	1	Zmáčknuo STOP v kabině	YES	NO	NO	NO	#800000	#FFFFFF
::[PLC1]Program:MainProgram.VIZU_MOD_SP POJENI}	1	Žádost o spojení s Operátorem	YES	NO	NO	NO	#800000	#FFFFFF
::[PLC1]Program:MainProgram.INC_Ret_LSC_LIST[0].1}	1	Porucha slavu s adresou 1	YES	NO	NO	NO	#800000	#FFFFFF
::[PLC1]Program:MainProgram.INC_Ret_LSC_LIST[0].2}	1	Porucha slavu s adresou 2	YES	NO	NO	NO	#800000	#FFFFFF
::[PLC1]Program:MainProgram.INC_Ret_LSC_LIST[0].3}	1	Porucha slavu s adresou 3	YES	NO	NO	NO	#800000	#FFFFFF
::[PLC1]Program:MainProgram.INC_Ret_LSC_LIST[0].4}	1	Porucha slavu s adresou 4	YES	NO	NO	NO	#800000	#FFFFFF
::[PLC1]Program:MainProgram.INC_Ret_LSC_LIST[0].5}	1	Porucha slavu s adresou 5	YES	NO	NO	NO	#800000	#FFFFFF
::[PLC1]Program:MainProgram.INC_Ret_LSC_LIST[0].6}	1	Porucha slavu s adresou 6	YES	NO	NO	NO	#800000	#FFFFFF
::[PLC1]Program:MainProgram.INC_Ret_LSC_LIST[0].7}	1	Porucha slavu s adresou 7	YES	NO	NO	NO	#800000	#FFFFFF
::[PLC1]Program:MainProgram.INC_Ret_LSC_LIST[1].0}	1	Porucha slavu s adresou 8	YES	NO	NO	NO	#800000	#FFFFFF
::[PLC1]Program:MainProgram.INC_Ret_LSC_LIST[1].1}	1	Porucha slavu s adresou 9	YES	NO	NO	NO	#800000	#FFFFFF
::[PLC1]Program:MainProgram.INC_Ret_LSC_LIST[1].2}	1	Porucha slavu s adresou 10	YES	NO	NO	NO	#800000	#FFFFFF
::[PLC1]Program:MainProgram.INC_Ret_LSC_LIST[1].3}	1	Porucha slavu s adresou 11	YES	NO	NO	NO	#800000	#FFFFFF

Triggers	Trigger value	Messages	Display	Audio	Print	Message to Tag	Background	Foreground
<Unassigned>			YES	NO	NO	NO	#800000	#FFFFFF

1.2.4.1.3 Advanced

Option	Selection
Current alarms	[ALARM]
History Size	128
Hold time (ms)	250
Maximum update rate (second)	1.00
Silence	
Remote Silence	
Remote Ack All	
Status Reset	
Remote Status Reset	
Close Display	
Remote Close Display	

1.2.4.1.4 Tags used by Component

Tag Name	Tag Type	Tag Description
::[PLC1]Program:MainProgram.INC_Ret_LSC_LIST[0].1		
::[PLC1]Program:MainProgram.INC_Ret_LSC_LIST[0].2		
::[PLC1]Program:MainProgram.INC_Ret_LSC_LIST[0].3		
::[PLC1]Program:MainProgram.INC_Ret_LSC_LIST[0].4		
::[PLC1]Program:MainProgram.INC_Ret_LSC_LIST[0].5		
::[PLC1]Program:MainProgram.INC_Ret_LSC_LIST[0].6		
::[PLC1]Program:MainProgram.INC_Ret_LSC_LIST[0].7		
::[PLC1]Program:MainProgram.INC_Ret_LSC_LIST[1].0		
::[PLC1]Program:MainProgram.INC_Ret_LSC_LIST[1].1		
::[PLC1]Program:MainProgram.INC_Ret_LSC_LIST[1].2		
::[PLC1]Program:MainProgram.INC_Ret_LSC_LIST[1].3		
::[PLC1]Program:MainProgram.INC_TL_STOP		
::[PLC1]Program:MainProgram.VIZU_ESTOP		
::[PLC1]Program:MainProgram.VIZU_MOD_SPOJENI		

1.2.5 INFORMATION

1.2.5.1 Information\Information Setup

1.2.5.1.1 Setup

<u>Option</u>	<u>Selection</u>
Display file name	[INFORMATION ]
Message file name	
Maximum Update Rate	1.00 seconds
Acknowledge hold time	3.00 seconds

1.2.5.1.2 Connection

<u>Name</u>	<u>Tag or expression</u>
Value	
Ack	

1.2.5.1.3 Tags used by Component

<u>Tag Name</u>	<u>Tag Type</u>	<u>Tag Description</u>
-----------------	-----------------	------------------------

1.2.5.2 Information\Information Messages

1.2.6 LOGIC AND CONTROL

1.2.6.1 LogicControl\Macros

1.2.7 DATALOG

1.2.7.1 Datalog\Datalog Models

1.2.8 RECIPEPLUS

1.2.8.1 RecipePlus\RecipePlus Setup

Recipe file location

Recipe Files Stored in: C:\Users\Public\Documents\RSView Enterprise\ME\HMI Projects\VytahVizu1\RecipePlus

1.2.8.2 RecipePlus\RecipePlus Editor

1.2.9 DIRECT TAGS

1.2.9.1 Direct TagsDirect Tags Cross Reference

Shortcut Name	Tag Name	Component Type	Component Name	Object Name
PLC1	ASi_Input.Data[0].0	Displays	Z_DIA_IO	Polygon96
PLC1	ASi_Input.Data[0].1	Displays	Z_DIA_IO	Polygon102
PLC1	ASi_Input.Data[0].10	Displays	Z_DIA_IO	Polygon52
PLC1	ASi_Input.Data[0].11	Displays	Z_DIA_IO	Polygon55
PLC1	ASi_Input.Data[0].2	Displays	Z_DIA_IO	Polygon105
PLC1	ASi_Input.Data[0].3	Displays	Z_DIA_IO	Polygon108
PLC1	ASi_Input.Data[0].4	Displays	Z_DIA_IO	Polygon72
PLC1	ASi_Input.Data[0].5	Displays	Z_DIA_IO	Polygon75
PLC1	ASi_Input.Data[0].6	Displays	Z_DIA_IO	Polygon78
PLC1	ASi_Input.Data[0].7	Displays	Z_DIA_IO	Polygon81
PLC1	ASi_Input.Data[0].8	Displays	Z_DIA_IO	Polygon99
PLC1	ASi_Input.Data[0].9	Displays	Z_DIA_IO	Polygon49
PLC1	ASi_Input.Data[1].0	Displays	Z_DIA_IO	Polygon195
PLC1	ASi_Input.Data[1].1	Displays	Z_DIA_IO	Polygon198
PLC1	ASi_Input.Data[1].10	Displays	Z_DIA_IO	Polygon153
PLC1	ASi_Input.Data[1].11	Displays	Z_DIA_IO	Polygon156
PLC1	ASi_Input.Data[1].12	Displays	Z_DIA_IO	Polygon123
PLC1	ASi_Input.Data[1].13	Displays	Z_DIA_IO	Polygon126
PLC1	ASi_Input.Data[1].14	Displays	Z_DIA_IO	Polygon129
PLC1	ASi_Input.Data[1].15	Displays	Z_DIA_IO	Polygon132
PLC1	ASi_Input.Data[1].4	Displays	Z_DIA_IO	Polygon171
PLC1	ASi_Input.Data[1].5	Displays	Z_DIA_IO	Polygon174
PLC1	ASi_Input.Data[1].6	Displays	Z_DIA_IO	Polygon177
PLC1	ASi_Input.Data[1].7	Displays	Z_DIA_IO	Polygon180
PLC1	ASi_Input.Data[1].8	Displays	Z_DIA_IO	Polygon147
PLC1	ASi_Input.Data[1].9	Displays	Z_DIA_IO	Polygon150
PLC1	ASi_Input.Data[2].12	Displays	Z_DIA_IO	Polygon204
PLC1	ASi_Input.Data[2].13	Displays	Z_DIA_IO	Polygon207
PLC1	ASi_Input.Data[2].14	Displays	Z_DIA_IO	Polygon210
PLC1	ASi_Input.Data[2].15	Displays	Z_DIA_IO	Polygon213
PLC1	ASi_Input.Data[2].2	Displays	Z_DIA_IO	Polygon45
PLC1	ASi_Input.Data[2].3	Displays	Z_DIA_IO	Polygon348
PLC1	ASi_Output.Data[0].0	Displays	Z_DIA_IO	Polygon111
PLC1	ASi_Output.Data[0].1	Displays	Z_DIA_IO	Polygon114
PLC1	ASi_Output.Data[0].10	Displays	Z_DIA_IO	Polygon40
PLC1	ASi_Output.Data[0].11	Displays	Z_DIA_IO	Polygon43
PLC1	ASi_Output.Data[0].2	Displays	Z_DIA_IO	Polygon117
PLC1	ASi_Output.Data[0].3	Displays	Z_DIA_IO	Polygon120
PLC1	ASi_Output.Data[0].4	Displays	Z_DIA_IO	Polygon84
PLC1	ASi_Output.Data[0].5	Displays	Z_DIA_IO	Polygon87
PLC1	ASi_Output.Data[0].6	Displays	Z_DIA_IO	Polygon90
PLC1	ASi_Output.Data[0].7	Displays	Z_DIA_IO	Polygon93
PLC1	ASi_Output.Data[0].8	Displays	Z_DIA_IO	Polygon25
PLC1	ASi_Output.Data[0].9	Displays	Z_DIA_IO	Polygon37
PLC1	ASi_Output.Data[1].10	Displays	Z_DIA_IO	Polygon165
PLC1	ASi_Output.Data[1].11	Displays	Z_DIA_IO	Polygon168
PLC1	ASi_Output.Data[1].12	Displays	Z_DIA_IO	Polygon135
PLC1	ASi_Output.Data[1].13	Displays	Z_DIA_IO	Polygon138
PLC1	ASi_Output.Data[1].14	Displays	Z_DIA_IO	Polygon141
PLC1	ASi_Output.Data[1].15	Displays	Z_DIA_IO	Polygon144
PLC1	ASi_Output.Data[1].4	Displays	Z_DIA_IO	Polygon183
PLC1	ASi_Output.Data[1].5	Displays	Z_DIA_IO	Polygon186
PLC1	ASi_Output.Data[1].6	Displays	Z_DIA_IO	Polygon189
PLC1	ASi_Output.Data[1].7	Displays	Z_DIA_IO	Polygon192
PLC1	ASi_Output.Data[1].8	Displays	Z_DIA_IO	Polygon159
PLC1	ASi_Output.Data[1].9	Displays	Z_DIA_IO	Polygon162
PLC1	ASi_Output.Data[2].0	Displays	Z_DIA_IO	Polygon351
PLC1	ASi_Output.Data[2].1	Displays	Z_DIA_IO	Polygon354
PLC1	ASi_Output.Data[2].12	Displays	Z_DIA_IO	Polygon216
PLC1	ASi_Output.Data[2].13	Displays	Z_DIA_IO	Polygon219
PLC1	ASi_Output.Data[2].14	Displays	Z_DIA_IO	Polygon222
PLC1	ASi_Output.Data[2].15	Displays	Z_DIA_IO	Polygon225
PLC1	ASi_Output.Data[68]	Displays	Z_DIA_IO	NumericDisplay2
PLC1	ASi_Output.Data[69]	Displays	Z_DIA_IO	NumericDisplay3
PLC1	Program:MainProgram.INC_Ret_LSC_LIST[0].1	Displays	Z_SIT_ASI	Polygon18
PLC1	Program:MainProgram.INC_Ret_LSC_LIST[0].1	Alarm Setup	Alarm Setup	
PLC1	Program:MainProgram.INC_Ret_LSC_LIST[0].2	Displays	Z_SIT_ASI	Polygon17
PLC1	Program:MainProgram.INC_Ret_LSC_LIST[0].2	Alarm Setup	Alarm Setup	
PLC1	Program:MainProgram.INC_Ret_LSC_LIST[0].3	Displays	Z_SIT_ASI	Polygon16
PLC1	Program:MainProgram.INC_Ret_LSC_LIST[0].3	Alarm Setup	Alarm Setup	
PLC1	Program:MainProgram.INC_Ret_LSC_LIST[0].4	Displays	Z_SIT_ASI	Polygon15
PLC1	Program:MainProgram.INC_Ret_LSC_LIST[0].4	Alarm Setup	Alarm Setup	
PLC1	Program:MainProgram.INC_Ret_LSC_LIST[0].5	Displays	Z_SIT_ASI	Polygon13
PLC1	Program:MainProgram.INC_Ret_LSC_LIST[0].5	Alarm Setup	Alarm Setup	
PLC1	Program:MainProgram.INC_Ret_LSC_LIST[0].6	Displays	Z_SIT_ASI	Polygon19
PLC1	Program:MainProgram.INC_Ret_LSC_LIST[0].6	Alarm Setup	Alarm Setup	
PLC1	Program:MainProgram.INC_Ret_LSC_LIST[0].7	Displays	Z_SIT_ASI	Polygon14
PLC1	Program:MainProgram.INC_Ret_LSC_LIST[0].7	Alarm Setup	Alarm Setup	
PLC1	Program:MainProgram.INC_Ret_LSC_LIST[1].0	Displays	Z_SIT_ASI	Polygon10
PLC1	Program:MainProgram.INC_Ret_LSC_LIST[1].0	Alarm Setup	Alarm Setup	
PLC1	Program:MainProgram.INC_Ret_LSC_LIST[1].1	Alarm Setup	Alarm Setup	
PLC1	Program:MainProgram.INC_Ret_LSC_LIST[1].1	Displays	Z_SIT_ASI	Polygon9
PLC1	Program:MainProgram.INC_Ret_LSC_LIST[1].2	Alarm Setup	Alarm Setup	
PLC1	Program:MainProgram.INC_Ret_LSC_LIST[1].3	Displays	Z_SIT_ASI	Polygon7
PLC1	Program:MainProgram.INC_Ret_LSC_LIST[1].3	Alarm Setup	Alarm Setup	
PLC1	Program:MainProgram.INC_SNIMAC1	Displays	Z_DIA_IO	Polygon795
PLC1	Program:MainProgram.INC_SNIMAC1	Displays	Z_DIA_IO	Polygon855
PLC1	Program:MainProgram.INC_SNIMAC1	Displays	A_MANUAL	Polygon211
PLC1	Program:MainProgram.INC_SNIMAC1	Displays	Z_DIA_PLC	Polygon211
PLC1	Program:MainProgram.INC_SNIMAC1	Displays	A_SIM	Polygon211
PLC1	Program:MainProgram.INC_SNIMAC2	Displays	Z_DIA_IO	Polygon798
PLC1	Program:MainProgram.INC_SNIMAC2	Displays	Z_DIA_IO	Polygon858

Shortcut Name	Tag Name	Component Type	Component Name	Object Name
PLC1	Program:MainProgram.INC_SNIMAC2	Displays	A_MANUAL	Polygon214
PLC1	Program:MainProgram.INC_SNIMAC2	Displays	Z_DIA_PLC	Polygon214
PLC1	Program:MainProgram.INC_SNIMAC2	Displays	A_SIM	Polygon214
PLC1	Program:MainProgram.INC_SNIMAC_ZATIZENI	Displays	MAIN	Polygon4
PLC1	Program:MainProgram.INC_SNIMAC_ZATIZENI	Displays	A_SIM	Polygon4
PLC1	Program:MainProgram.INC_TL_STOP	Displays	MAIN	LatchedPushButton13
PLC1	Program:MainProgram.INC_TL_STOP	Displays	Z_DIA_IO	Polygon846
PLC1	Program:MainProgram.INC_TL_STOP	Alarm Setup	Alarm Setup	
PLC1	Program:MainProgram.INC_TL_ZVONEK	Displays	MAIN	LatchedPushButton14
PLC1	Program:MainProgram.INC_TL_ZVONEK	Displays	Z_DIA_IO	Polygon852
PLC1	Program:MainProgram.MOD0	Displays	MAIN	Polygon96
PLC1	Program:MainProgram.MOD0	Displays	A_MANUAL	MomentaryPushButton27
PLC1	Program:MainProgram.MOD0	Displays	A_MANUAL	MomentaryPushButton28
PLC1	Program:MainProgram.MOD0	Displays	A_MANUAL	Polygon96
PLC1	Program:MainProgram.MOD0	Displays	A_HLAVNI	MomentaryPushButton27
PLC1	Program:MainProgram.MOD0	Displays	A_HLAVNI	MomentaryPushButton28
PLC1	Program:MainProgram.MOD0	Displays	A_HLAVNI	Polygon96
PLC1	Program:MainProgram.MOD0	Displays	Z_DIA_PLC	Polygon96
PLC1	Program:MainProgram.MOD0	Displays	A_SIM	MomentaryPushButton27
PLC1	Program:MainProgram.MOD0	Displays	A_SIM	MomentaryPushButton28
PLC1	Program:MainProgram.MOD0	Displays	A_SIM	Polygon96
PLC1	Program:MainProgram.MOD1	Displays	MAIN	Polygon90
PLC1	Program:MainProgram.MOD1	Displays	A_MANUAL	MomentaryPushButton3
PLC1	Program:MainProgram.MOD1	Displays	A_MANUAL	MomentaryPushButton8
PLC1	Program:MainProgram.MOD1	Displays	A_MANUAL	Polygon90
PLC1	Program:MainProgram.MOD1	Displays	A_HLAVNI	MomentaryPushButton7
PLC1	Program:MainProgram.MOD1	Displays	A_HLAVNI	MomentaryPushButton8
PLC1	Program:MainProgram.MOD1	Displays	A_HLAVNI	Polygon90
PLC1	Program:MainProgram.MOD1	Displays	Z_DIA_PLC	Polygon90
PLC1	Program:MainProgram.MOD1	Displays	A_SIM	MomentaryPushButton3
PLC1	Program:MainProgram.MOD1	Displays	A_SIM	MomentaryPushButton8
PLC1	Program:MainProgram.MOD1	Displays	A_SIM	Polygon90
PLC1	Program:MainProgram.MOD1_B_INIT_OK	Displays	Z_DIA_PLC	Polygon6
PLC1	Program:MainProgram.MOD1_B_INIT_REQ	Displays	Z_DIA_PLC	Polygon9
PLC1	Program:MainProgram.MOD1_BEH	Displays	Z_DIA_PLC	Polygon12
PLC1	Program:MainProgram.MOD2	Displays	MAIN	Polygon99
PLC1	Program:MainProgram.MOD2	Displays	A_MANUAL	MomentaryPushButton1
PLC1	Program:MainProgram.MOD2	Displays	A_MANUAL	MomentaryPushButton2
PLC1	Program:MainProgram.MOD2	Displays	A_MANUAL	Polygon99
PLC1	Program:MainProgram.MOD2	Displays	A_HLAVNI	MomentaryPushButton1
PLC1	Program:MainProgram.MOD2	Displays	A_HLAVNI	MomentaryPushButton2
PLC1	Program:MainProgram.MOD2	Displays	A_HLAVNI	Polygon99
PLC1	Program:MainProgram.MOD2	Displays	Z_DIA_PLC	Polygon99
PLC1	Program:MainProgram.MOD2	Displays	A_SIM	MomentaryPushButton1
PLC1	Program:MainProgram.MOD2	Displays	A_SIM	MomentaryPushButton2
PLC1	Program:MainProgram.MOD2	Displays	A_SIM	Polygon99
PLC1	Program:MainProgram.MOD2_B_INIT_OK	Displays	Z_DIA_PLC	Polygon20
PLC1	Program:MainProgram.MOD2_B_INIT_REQ	Displays	Z_DIA_PLC	Polygon23
PLC1	Program:MainProgram.MOD2_BEH	Displays	Z_DIA_PLC	Polygon26
PLC1	Program:MainProgram.MOD2_STOP_KABINA	Displays	A_SIM	LatchedPushButton13
PLC1	Program:MainProgram.MOD2_TL_DOL.1	Displays	A_SIM	LatchedPushButton4
PLC1	Program:MainProgram.MOD2_TL_DOL.2	Displays	A_SIM	LatchedPushButton6
PLC1	Program:MainProgram.MOD2_TL_DOL.3	Displays	A_SIM	LatchedPushButton8
PLC1	Program:MainProgram.MOD2_TL_KAB.0	Displays	A_SIM	LatchedPushButton1
PLC1	Program:MainProgram.MOD2_TL_KAB.1	Displays	A_SIM	LatchedPushButton10
PLC1	Program:MainProgram.MOD2_TL_KAB.2	Displays	A_SIM	LatchedPushButton11
PLC1	Program:MainProgram.MOD2_TL_KAB.3	Displays	A_SIM	LatchedPushButton12
PLC1	Program:MainProgram.MOD2_TL_NAH.0	Displays	A_SIM	LatchedPushButton2
PLC1	Program:MainProgram.MOD2_TL_NAH.1	Displays	A_SIM	LatchedPushButton5
PLC1	Program:MainProgram.MOD2_TL_NAH.2	Displays	A_SIM	LatchedPushButton7
PLC1	Program:MainProgram.MOD2_ZVONEK	Displays	A_SIM	LatchedPushButton14
PLC1	Program:MainProgram.MOD_ROZJEZD_REQ	Displays	Z_DIA_PLC	NumericDisplay10
PLC1	Program:MainProgram.MOD_ZASTAV_REQ	Displays	Z_DIA_PLC	NumericDisplay11
PLC1	Program:MainProgram.OUT_MOT_SMER	Displays	A_MANUAL	MomentaryPushButton7
PLC1	Program:MainProgram.OUT_MOT_SMER	Displays	A_MANUAL	MomentaryPushButton9
PLC1	Program:MainProgram.OUT_OSVETLENI	Displays	Z_DIA_IO	Polygon801
PLC1	Program:MainProgram.OUT_OVL_Mot	Displays	MAIN	Ellipse1
PLC1	Program:MainProgram.OUT_OVL_Mot	Displays	A_MANUAL	Polygon9
PLC1	Program:MainProgram.OUT_OVL_Mot	Displays	Z_DIA_PLC	Polygon15
PLC1	Program:MainProgram.OUT_OVL_Mot	Displays	A_SIM	Ellipse1
PLC1	Program:MainProgram.OUT_OVL_Patro	Displays	MAIN	NumericDisplay3
PLC1	Program:MainProgram.OUT_OVL_Patro	Displays	MAIN	NumericDisplay4
PLC1	Program:MainProgram.OUT_OVL_Patro	Displays	MAIN	NumericDisplay5
PLC1	Program:MainProgram.OUT_OVL_Patro	Displays	MAIN	NumericDisplay6
PLC1	Program:MainProgram.OUT_OVL_Patro	Displays	MAIN	NumericDisplay8
PLC1	Program:MainProgram.OUT_OVL_Patro	Displays	Z_DIA_PLC	NumericDisplay6
PLC1	Program:MainProgram.OUT_OVL_Patro	Displays	A_SIM	NumericDisplay3
PLC1	Program:MainProgram.OUT_OVL_Patro	Displays	A_SIM	NumericDisplay4
PLC1	Program:MainProgram.OUT_OVL_Patro	Displays	A_SIM	NumericDisplay5
PLC1	Program:MainProgram.OUT_OVL_Patro	Displays	A_SIM	NumericDisplay6
PLC1	Program:MainProgram.OUT_OVL_Patro	Displays	A_SIM	NumericDisplay8
PLC1	Program:MainProgram.OUT_OVL_SMER_DOLU	Displays	MAIN	Polygon18
PLC1	Program:MainProgram.OUT_OVL_SMER_DOLU	Displays	Z_DIA_PLC	Polygon18
PLC1	Program:MainProgram.OUT_OVL_SMER_DOLU	Displays	A_SIM	Polygon18
PLC1	Program:MainProgram.OUT_OVL_SMER_NAHORU	Displays	MAIN	Polygon8
PLC1	Program:MainProgram.OUT_OVL_SMER_NAHORU	Displays	Z_DIA_PLC	Polygon16
PLC1	Program:MainProgram.OUT_OVL_SMER_NAHORU	Displays	A_SIM	Polygon8
PLC1	Program:MainProgram.OUT_VENTILATOR	Displays	Z_DIA_IO	Polygon804
PLC1	Program:MainProgram.VIZU_ESTOP	Displays	Z_DIA_IO	Polygon861
PLC1	Program:MainProgram.VIZU_ESTOP	Displays	Z_SIT_ASI	Polygon20
PLC1	Program:MainProgram.VIZU_ESTOP	Alarm Setup	Alarm Setup	
PLC1	Program:MainProgram.VIZU_MOD0_DOWN	Displays	A_MANUAL	MomentaryPushButton7
PLC1	Program:MainProgram.VIZU_MOD0_MOT_START	Displays	A_MANUAL	MomentaryPushButton5
PLC1	Program:MainProgram.VIZU_MOD0_MOT_STOP	Displays	A_MANUAL	MomentaryPushButton6
PLC1	Program:MainProgram.VIZU_MOD0_RYCHLOST	Displays	A_MANUAL	ControlListSelector1
PLC1	Program:MainProgram.VIZU_MOD0_UP	Displays	A_MANUAL	MomentaryPushButton9
PLC1	Program:MainProgram.VIZU_MOD1_CHOD_MOT	Displays	A_HLAVNI	NumericDisplay3
PLC1	Program:MainProgram.VIZU_MOD1_CHOD_MOT	Displays	Z_DIA_PLC	NumericDisplay3



Shortcut Name	Tag Name	Component Type	Component Name	Object Name
PLC1	Program:MainProgram.VIZU_MOD1_CHOD_PLCLC1	Displays	A_HLAVNI	NumericDisplay1
PLC1	Program:MainProgram.VIZU_MOD1_CHOD_PLCLC1	Displays	Z_DIA_PLCLC1	NumericDisplay1
PLC1	Program:MainProgram.VIZU_MOD1_CHOD_PRGLC1	Displays	A_HLAVNI	NumericDisplay2
PLC1	Program:MainProgram.VIZU_MOD1_CHOD_PRGLC1	Displays	Z_DIA_PLCLC1	NumericDisplay2
PLC1	Program:MainProgram.VIZU_MOD1_ZASTAVENI_CELKEMLC1	Displays	A_HLAVNI	NumericDisplay4
PLC1	Program:MainProgram.VIZU_MOD1_ZASTAVENI_P1.ACC	Displays	A_HLAVNI	NumericDisplay5
PLC1	Program:MainProgram.VIZU_MOD1_ZASTAVENI_P2.ACC	Displays	A_HLAVNI	NumericDisplay6
PLC1	Program:MainProgram.VIZU_MOD1_ZASTAVENI_P3.ACC	Displays	A_HLAVNI	NumericDisplay7
PLC1	Program:MainProgram.VIZU_MOD1_ZASTAVENI_P4.ACC	Displays	A_HLAVNI	NumericDisplay8
PLC1	Program:MainProgram.VIZU_MOD_RYCH_DOJ_mm	Displays	A_HLAVNI	NumericInputCursorPoint6
PLC1	Program:MainProgram.VIZU_MOD_RYCH_DOJ_mm	Displays	Z_DIA_PLCLC1	NumericInputCursorPoint3
PLC1	Program:MainProgram.VIZU_MOD_RYCH_JIZDA_mm	Displays	A_HLAVNI	NumericInputCursorPoint5
PLC1	Program:MainProgram.VIZU_MOD_RYCH_JIZDA_mm	Displays	Z_DIA_PLCLC1	NumericInputCursorPoint2
PLC1	Program:MainProgram.VIZU_MOD_RYCH_ROZJ_mm	Displays	A_HLAVNI	NumericInputCursorPoint4
PLC1	Program:MainProgram.VIZU_MOD_RYCH_ROZJ_mm	Displays	Z_DIA_PLCLC1	NumericInputCursorPoint1
PLC1	Program:MainProgram.VIZU_MOD_SPOJENI	Alarm Setup	Alarm Setup	
PLC1	Program:MainProgram.VIZU_MOT_RYCHLOST	Displays	MAIN	NumericDisplay7
PLC1	Program:MainProgram.VIZU_MOT_RYCHLOST	Displays	A_MANUAL	NumericDisplay7
PLC1	Program:MainProgram.VIZU_MOT_RYCHLOST	Displays	Z_DIA_PLCLC1	NumericDisplay7
PLC1	Program:MainProgram.VIZU_MOT_RYCHLOST	Displays	A_SIM	NumericDisplay7
PLC1	Program:MainProgram.VIZU_Pozice_Kabiny_mm	Displays	Z_DIA_PLCLC1	NumericDisplay4
PLC1	Program:MainProgram.VIZU_Pozice_Kabiny_proc	Displays	Z_DIA_PLCLC1	NumericDisplay5
PLC1	Program:MainProgram.VIZU_Pozice_Kabiny_proc2	Displays	MAIN	Polygon4
PLC1	Program:MainProgram.VIZU_Pozice_Kabiny_proc2	Displays	A_SIM	Polygon4
PLC1	Program:MainProgram.VIZU_PRETIZENI	Displays	MAIN	Polygon46
PLC1	Program:MainProgram.VIZU_PRETIZENI	Displays	A_SIM	Polygon46
PLC1	Program:MainProgram.VIZU_RES_MOTOR	Displays	A_HLAVNI	MomentaryPushButton6
PLC1	Program:MainProgram.VIZU_RES_ZASTAVENI	Displays	A_HLAVNI	MomentaryPushButton5
PLC1	Program:MainProgram.VIZU_TL_DOL1	Displays	MAIN	LatchedPushButton3
PLC1	Program:MainProgram.VIZU_TL_DOL1	Displays	Z_DIA_IOLC1	Polygon814
PLC1	Program:MainProgram.VIZU_TL_DOL1	Displays	A_SIM	LatchedPushButton3
PLC1	Program:MainProgram.VIZU_TL_DOL2	Displays	MAIN	LatchedPushButton4
PLC1	Program:MainProgram.VIZU_TL_DOL2	Displays	Z_DIA_IOLC1	Polygon817
PLC1	Program:MainProgram.VIZU_TL_DOL3	Displays	MAIN	LatchedPushButton6
PLC1	Program:MainProgram.VIZU_TL_DOL3	Displays	Z_DIA_IOLC1	Polygon820
PLC1	Program:MainProgram.VIZU_TL_DOL4	Displays	MAIN	LatchedPushButton8
PLC1	Program:MainProgram.VIZU_TL_DOL4	Displays	Z_DIA_IOLC1	Polygon823
PLC1	Program:MainProgram.VIZU_TL_KAB1	Displays	MAIN	LatchedPushButton1
PLC1	Program:MainProgram.VIZU_TL_KAB1	Displays	Z_DIA_IOLC1	Polygon831
PLC1	Program:MainProgram.VIZU_TL_KAB2	Displays	MAIN	LatchedPushButton10
PLC1	Program:MainProgram.VIZU_TL_KAB2	Displays	Z_DIA_IOLC1	Polygon834
PLC1	Program:MainProgram.VIZU_TL_KAB3	Displays	MAIN	LatchedPushButton11
PLC1	Program:MainProgram.VIZU_TL_KAB3	Displays	Z_DIA_IOLC1	Polygon837
PLC1	Program:MainProgram.VIZU_TL_KAB4	Displays	MAIN	LatchedPushButton12
PLC1	Program:MainProgram.VIZU_TL_KAB4	Displays	Z_DIA_IOLC1	Polygon840
PLC1	Program:MainProgram.VIZU_TL_NAH1	Displays	MAIN	LatchedPushButton2
PLC1	Program:MainProgram.VIZU_TL_NAH1	Displays	Z_DIA_IOLC1	Polygon784
PLC1	Program:MainProgram.VIZU_TL_NAH2	Displays	MAIN	LatchedPushButton5
PLC1	Program:MainProgram.VIZU_TL_NAH2	Displays	Z_DIA_IOLC1	Polygon787
PLC1	Program:MainProgram.VIZU_TL_NAH3	Displays	MAIN	LatchedPushButton7
PLC1	Program:MainProgram.VIZU_TL_NAH3	Displays	Z_DIA_IOLC1	Polygon790
PLC1	Program:MainProgram.VIZU_TL_NAH4	Displays	MAIN	LatchedPushButton9
PLC1	Program:MainProgram.VIZU_TL_NAH4	Displays	Z_DIA_IOLC1	Polygon793
PLC1	Program:MainProgram.VIZU_TL_NAH4	Displays	A_SIM	LatchedPushButton9
PLC1	Program:MainProgram.VIZU_VYP0	Displays	A_MANUAL	MomentaryPushButton28
PLC1	Program:MainProgram.VIZU_VYP0	Displays	A_HLAVNI	MomentaryPushButton28
PLC1	Program:MainProgram.VIZU_VYP0	Displays	A_SIM	MomentaryPushButton28
PLC1	Program:MainProgram.VIZU_VYP1	Displays	A_MANUAL	MomentaryPushButton8
PLC1	Program:MainProgram.VIZU_VYP1	Displays	A_HLAVNI	MomentaryPushButton8
PLC1	Program:MainProgram.VIZU_VYP1	Displays	A_SIM	MomentaryPushButton8
PLC1	Program:MainProgram.VIZU_VYP2	Displays	A_MANUAL	MomentaryPushButton2
PLC1	Program:MainProgram.VIZU_VYP2	Displays	A_HLAVNI	MomentaryPushButton2
PLC1	Program:MainProgram.VIZU_VYP2	Displays	A_SIM	MomentaryPushButton2
PLC1	Program:MainProgram.VIZU_ZAP0	Displays	A_MANUAL	MomentaryPushButton27
PLC1	Program:MainProgram.VIZU_ZAP0	Displays	A_HLAVNI	MomentaryPushButton27
PLC1	Program:MainProgram.VIZU_ZAP0	Displays	A_SIM	MomentaryPushButton27
PLC1	Program:MainProgram.VIZU_ZAP1	Displays	A_MANUAL	MomentaryPushButton3
PLC1	Program:MainProgram.VIZU_ZAP1	Displays	A_HLAVNI	MomentaryPushButton7
PLC1	Program:MainProgram.VIZU_ZAP1	Displays	A_SIM	MomentaryPushButton3
PLC1	Program:MainProgram.VIZU_ZAP2	Displays	A_MANUAL	MomentaryPushButton1
PLC1	Program:MainProgram.VIZU_ZAP2	Displays	A_HLAVNI	MomentaryPushButton1
PLC1	Program:MainProgram.VIZU_ZAP2	Displays	A_SIM	MomentaryPushButton1