

Appearance & Shape: To be free from any defect such as flow, burrs, unevenness etc, As per IEC standards.

Effective Parameters irrespective of material grade (per set)

Parameter	Value	Unit
Effective Length (L_e):	139.0	mm
Effective Area (A_e):	368.0	mm ²
Effective Area (A_{min}):	368.0	mm ²
Effective Volume (V_e):	51200	mm ³
Approximate weight(m):	262	g/set



ETD5922 Un-gapped (OL)

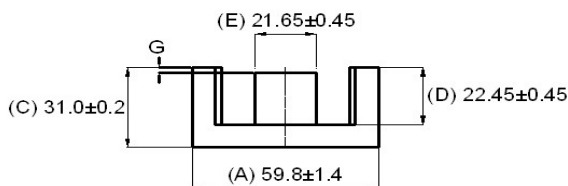
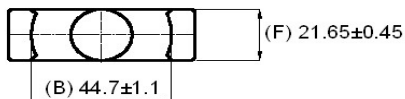
Test Conditions: 1 kHz/1mT/N=100/25°C

Material Grade	Initial Permeability (μ_{iac})	AL Value (nH)/Set	μ_e approx./Set	P_V (W/set) (16kHz, 200mT, 100°C)	P_V (W/set) (25kHz, 200mT, 100°C)	P_V (W/set) (100kHz, 100mT, 100°C)	P_V (W/set) (100kHz, 200mT, 100°C)	Ordering code
CF292	1800 ±20%	4700 +30%/-20%	≈1430	×	≤ 7.68	≤ 6.65	≤ 33.3	CF292ETD5922 OL
CF196	2000 ±20%	5100 +30%/-20%	≈1523	≤7.0	≤ 9.62	×	×	CF196ETD5922 OL
CF139	2100 ±20%	5300 +30%/-20%	≈1618	×	≤ 6.15	≤ 5.1	≤ 31	CF139ETD5922 OL
CF297	2300 ±20%	5500 +30%/-20%	≈1692	×	≤ 5.65	≤ 4.5	≤ 30.72	CF297ETD5922 OL

ETD5922 Gapped

Test Conditions: 1 kHz/300mV/N=100/25°C

Material Grade	Gap- Value (mm)/Pc	S, T		D		Ordering Code
		AL Approx. (nH)/Set	μ_e Approx./Set	AL Approx. (nH)/Set	μ_e Approx. /Set	
CF196	0.20±0.02	≈1580	≈470	≈965	≈290	CF196 ETD5922 G 0.20 S/T/D
CF196	0.50±0.06	≈815	≈245	≈500	≈150	CF196 ETD5922 G 0.50 S/T/D
CF196	1.00±0.06	≈500	≈150	≈310	≈90	CF196 ETD5922 G 1.00 S/T/D
CF196	1.50±0.06	≈375	≈112	≈228	≈67	CF196 ETD5922 G 1.50 S/T/D
CF196	2.00±0.06	≈310	≈90	≈187	≈55	CF196 ETD5922 G 2.00 S/T/D
CF139	0.20±0.02	≈1587	≈477	≈970	≈292	CF139 ETD5922 G 0.20 S/T/D
CF139	0.50±0.06	≈829	≈249	≈508	≈153	CF139 ETD5922 G 0.50 S/T/D
CF139	1.00±0.06	≈508	≈153	≈311	≈93	CF139 ETD5922 G 1.00 S/T/D
CF139	1.50±0.06	≈381	≈115	≈233	≈70	CF139 ETD5922 G 1.50 S/T/D
CF139	2.00±0.06	≈311	≈93	≈190	≈57	CF139 ETD5922 G 2.00 S/T/D
CF297	0.20±0.02	≈1600	≈480	≈980	≈300	CF297 ETD5922 G 0.20 S/T/D
CF297	0.50±0.06	≈830	≈255	≈515	≈158	CF297 ETD5922 G 0.50 S/T/D
CF297	1.00±0.06	≈515	≈158	≈320	≈95	CF297 ETD5922 G 1.00 S/T/D
CF297	1.50±0.06	≈390	≈120	≈240	≈73	CF297 ETD5922 G 1.50 S/T/D
CF297	2.00±0.06	≈320	≈95	≈196	≈60	CF297 ETD5922 G 2.00 S/T/D



General Terms & Conditions



Checked By: A.K.
Approved By: B.S.
Authorized By: KSR
Date: 30-05-2016
Rev. No.: 06

Customer's Approval
Authorized Signatory:
Name:
Date:

General Terms & Conditions

