

FAMILY HOUSE WITH TATTOO STUDIO

COLOUR SCHEME LEGEND

- WALL
- COMMON AREA
- BATHROOM
- COMMUNICATION ZONE
- STORAGE
- WORKING AREA

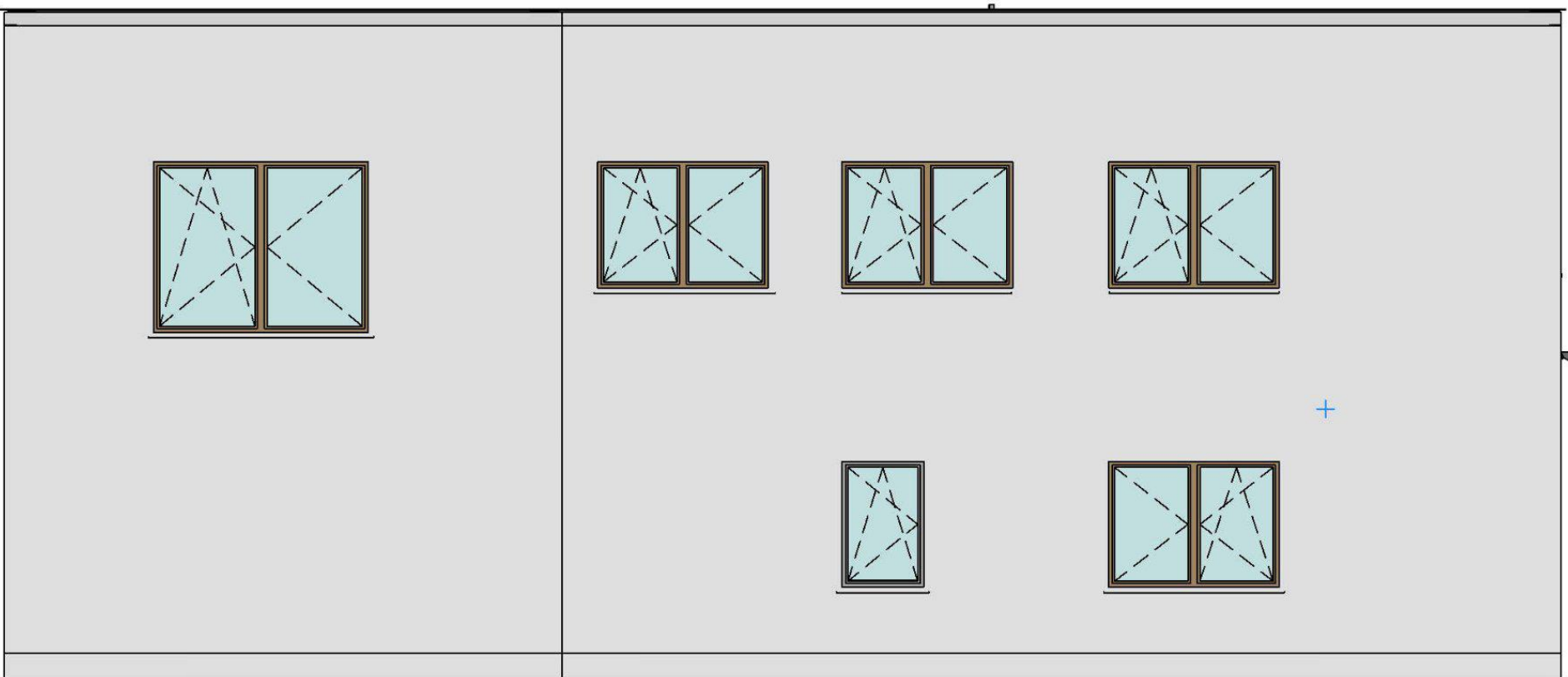


The designed building is a modern, polyfunctional family house with a partially basement and an integrated business zone – a fully equipped tattoo studio. This home reflects the lifestyle of a dynamic, creative family of four, where the business is more than just a workplace – it's a passion integrated into everyday life.

Situated in Krokočín, Czech Republic, the house stands proudly in a newly developed residential area with modern homes. Despite the surrounding development, the generous size of the plot and thoughtful layout ensure both privacy and openness, offering beautiful garden views and space for outdoor living.

The terrain of the plot is flat and spans an impressive 2093 m². The house itself has a total usable floor area of 313.48 m², with 274.4 m² dedicated to residential functions and 30.08 m² allocated to the business zone. The architectural concept is spread across three levels: a basement, a ground floor, and an upper floor.

In the basement, you'll find the technical facilities, spacious storage, and even a private gym with professional equipment – a space for health and well-being, just a staircase away.

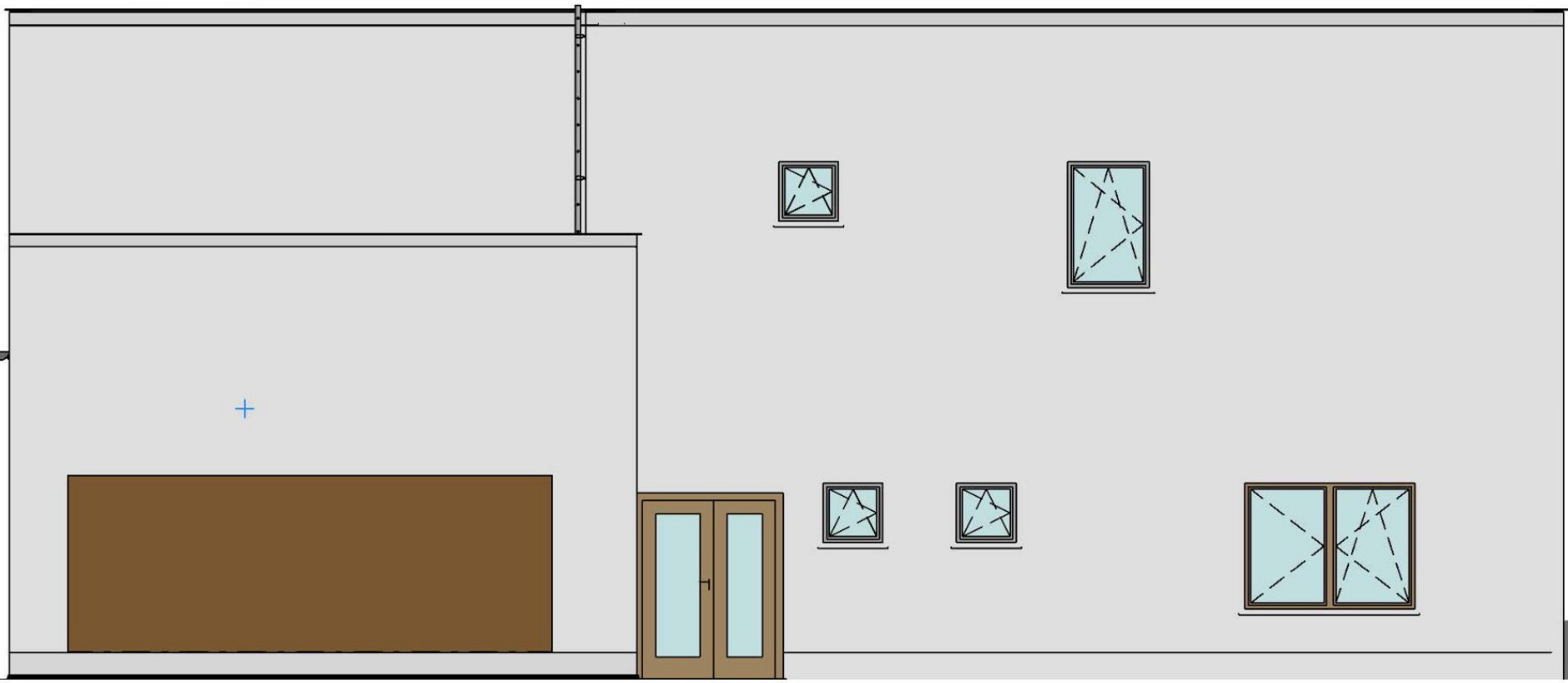


SOUTHEAST VIEW

NORTHEAST VIEW



NORTHWEST VIEW



SOUTHWEST VIEW

